

District I  
PO Box 1940, Hobbs, NM 88241-1940  
District II  
PO Drawer DD, Artesia, NM 88211-0719  
District III  
1000 Rio Brazos Rd., Aztec, NM 87410  
District IV  
PO Box 2088, Santa Fe, NM 87504-2088

State of New Mexico  
Energy, Minerals & Natural Resources Department

Form C-101  
Revised February 10, 1994  
Instructions on back  
Submit to Appropriate District Office  
State Lease - 6 Copies  
Fee Lease - 5 Copies

OIL CONSERVATION DIVISION  
PO Box 2088  
Santa Fe, NM 87504-2088

☒ AMENDED REPORT

APPLICATION FOR PERMIT TO DRILL, RE-ENTER, DEEPEN, PLUGBACK, OR ADD A ZONE

Operator Name and Address: Enron Oil & Gas Company P. O. Box 2267 Midland, TX 79702		OGRID Number 7377
Permit Expires 1 Year From Approval Date Unless Drilling Underway		API Number 30-025-34441
Property Code 23293	Property Name Enron "9" State Com.	Well No. 2

7 Surface Location

UL or lot no.	Section	Township	Range	Lot Idn	Feet from the	North/South line	Feet from the	East/West line	County
A	9	24S	33E		1000	North	1100	East	Lea

8 Proposed Bottom Hole Location If Different from Surface

UL or lot no.	Section	Township	Range	Lot Idn	Feet from the	North/South line	Feet from the	East/West line	County
Proposed Pool 1 Johnson Ranch Wolfcamp					Proposed Pool 2 Pitchfork Ranch				

Work Type Code N	Well Type Code G	Cable/Rotary R	Lease Type Code S	Ground Level Elevation 3580
Multiple N	Proposed Depth 14200	Formation Wolfcamp	Contractor	Spud Date May 18, 1998

21 Proposed Casing and Cement Program

Hole Size	Casing Size	Casing weight/foot	Setting Depth	Sacks of Cement	Estimated TOC
17 1/2	13 3/8	42# H40 A ST&C	650	550 CL C	Surface
12 1/4	9 5/8	40# J55 LT&C	5000	1250 Prem +	Surface
7	8 3/4	26# P110 LT&C	12700	1000 CL H	4500
6 1/8	3 1/2"	9.3#P105 GSHydrill	14,200	500 CL H	12300

Describe the proposed program. If this application is to DEEPEN or PLUG BACK give the data on the present productive zone and proposed new productive zone. Describe the blowout prevention program, if any. Use additional sheets if necessary.

13 3/8 Surface Casing: Cement to surface w/300 sx CL C 50/50 Poz+10% ge; & 8#/sx salt & 1/4# flocele followed by 250 sx CL C+2% CaCl2.

9 5/8" Intermediate: Cement to surface w/1000 sx Prem 50/50 poz+10% gel, +8%/sx salt + 1/4# sx flocele and 250 sx CL C + 2% CaCl2

7" Intermediate: Cement w/800 sx CL H + 3% Econolite + 5#/sx salt + 1/4#/sx flocele followed by 200 sx Prem 50/50 poz + 0.5% Halad-447 + 0.25#/sx D-air-1 + .17% HR-5 +.05#/sx CaCl. This is designed to bring TOC to 4500'±.

3 1/2": Cement w/500 sx 50/50 sx CL H/Poz+2% gel + 0.6% Halad-344 + 0.2% HR-5 +0.3% Super CBL. Cement slurry designed to bring TOC to 12300' BOP Diagrams Attached

I hereby certify that the information given above is true and complete to the best of my knowledge and belief.

Signature:

Printed name:

Linda Johnston

Title:

Agent

Date:

6/25/98

Phone:

(915) 694-8228

OIL CONSERVATION DIVISION

Approved by:

ORIGINAL SIGNED BY CHRIS WILLIAMS  
DISTRICT I SUPERVISOR

Title:

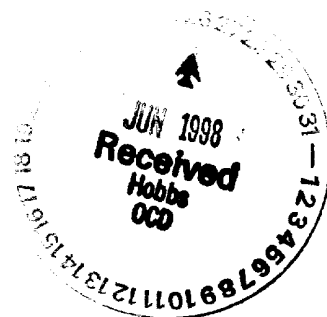
Approved:

JUN 30 1998

Expiration Date:

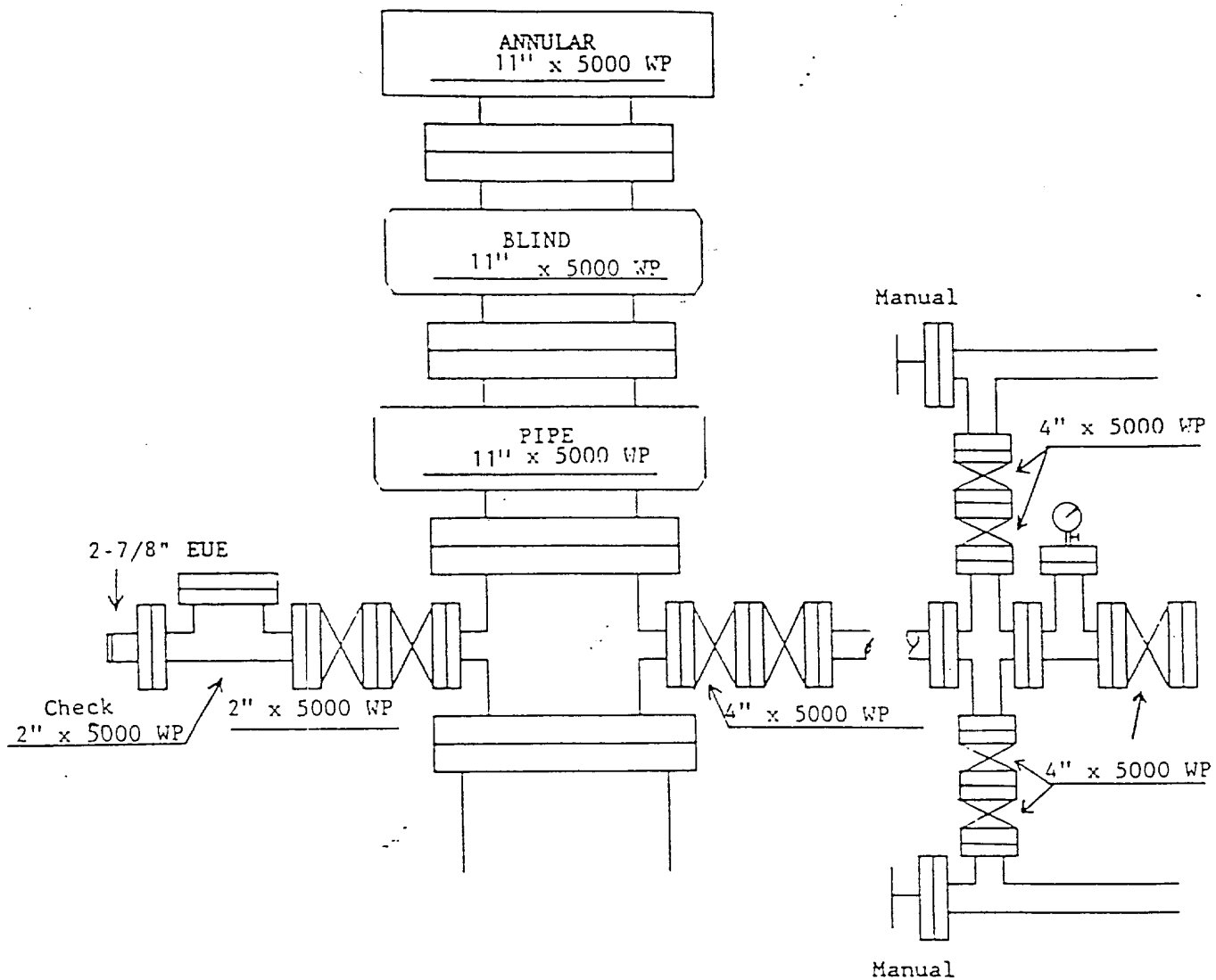
Conditions of Approval:

Attached ☐



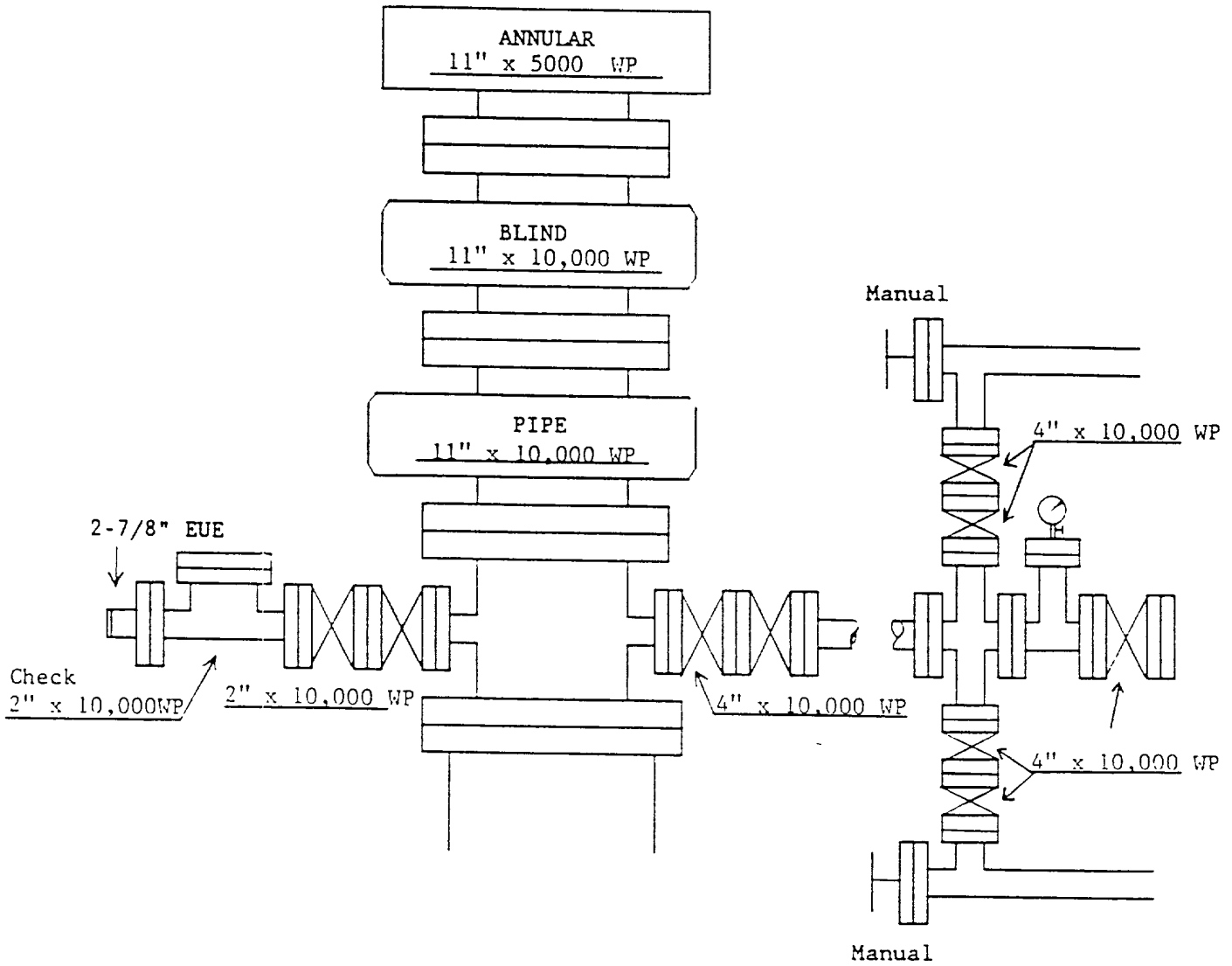
ENRON OIL & GAS COMPANY  
Enron "9" State Com. No. 2

ATTACHMENT I



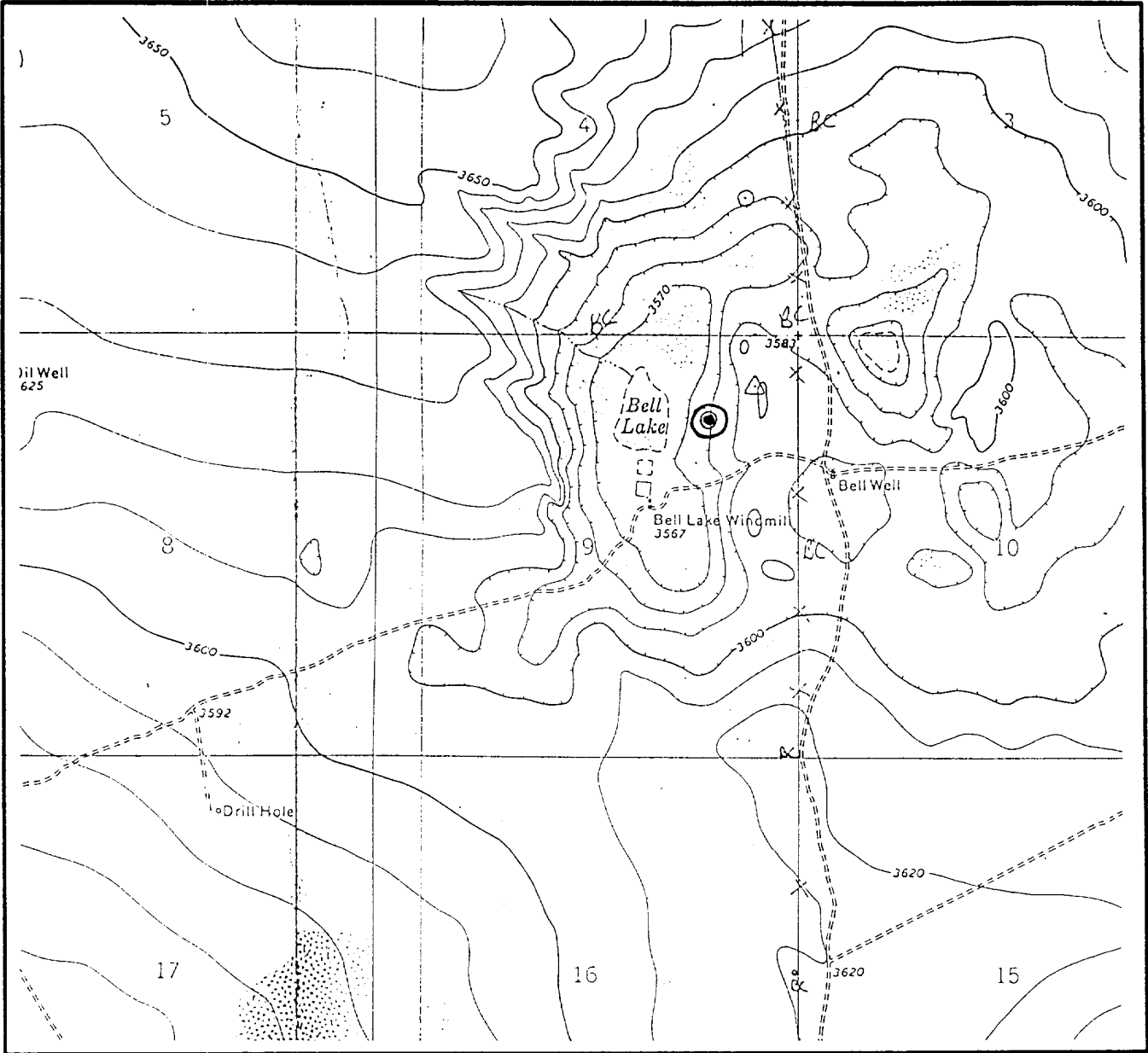
INSTALLED @ ±650' to ±12,700'

ENRON OIL & GAS COMPANY  
Enron "9" State Com No. 2



INSTALLED @ ±12,700 to TD

LOCATION & ELEVATION VERIFICATION MAP



SCALE : 1" = 2000' CONTOUR INTERVAL 10'

SECTION 9 TWP 24-S RGE 33-E  
SURVEY NEW MEXICO PRINCIPAL MERIDIAN  
COUNTY LEA STATE NM  
DESCRIPTION 1000' FNL & 1100' FEL  
ELEVATION 3580'  
  
OPERATOR ENRON OIL & GAS COMPANY  
LEASE ENRON "9" STATE COM #2  
  
U.S.G.S. TOPOGRAPHIC MAP  
BELL LAKE, NEW MEXICO  
  
LAT. N 32°14'11.5"  
LONG. W 103°34'18.3"



This location has been very carefully staked on the ground according to the best official survey records, maps, and other data available to us.  
Review this plot and notify us immediately of any possible discrepancy.

TOPOGRAPHIC LAND SURVEYORS

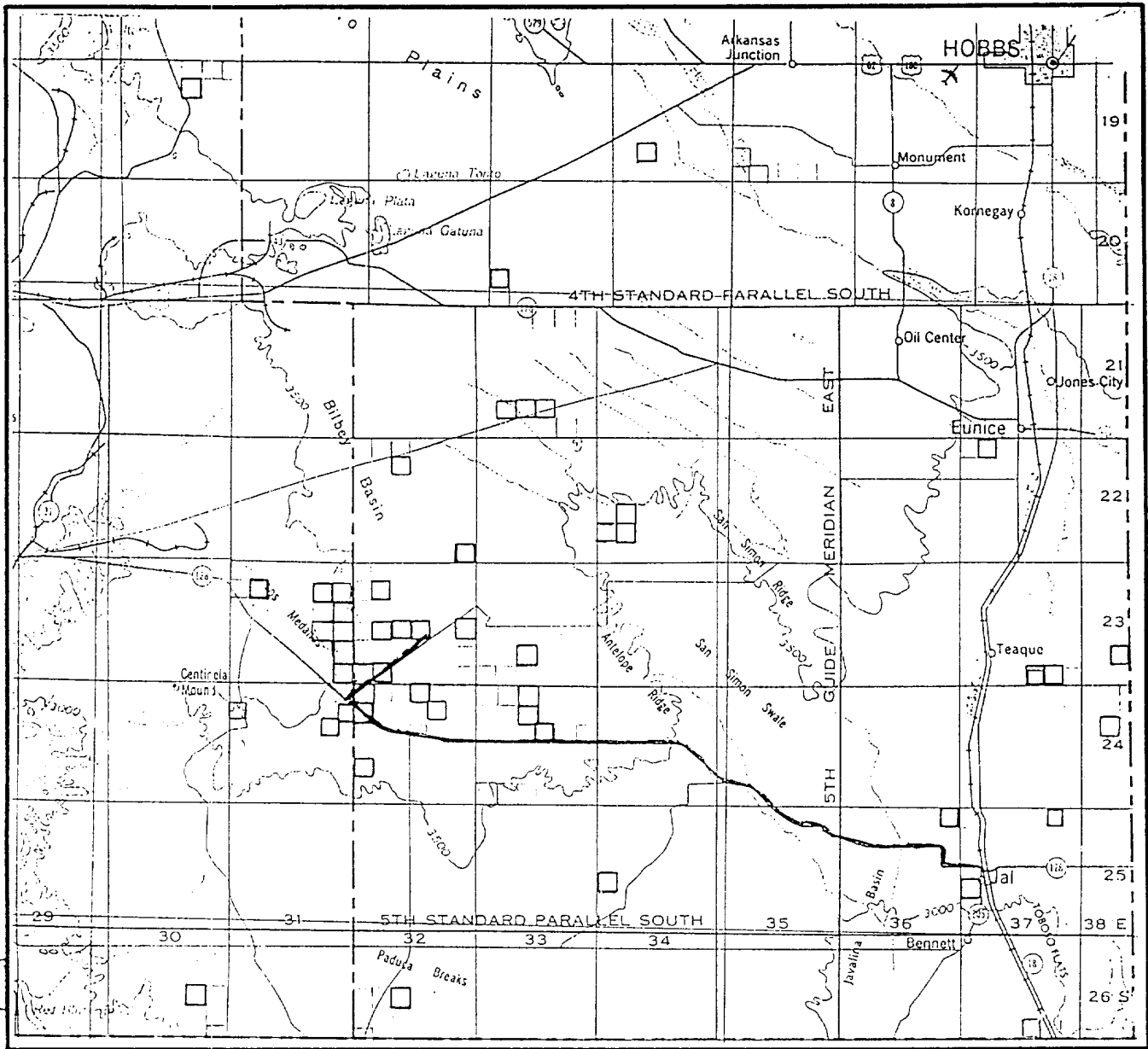
*Surveying & Mapping for the Oil & Gas Industry*

1307 N. HOBART  
PAMPA, TX. 79065  
(800) 658-5382

6709 N. CLASSEN BLVD.  
OKLAHOMA CITY, OK. 73116  
(800) 654-3219

2903 N. BIG SPRING  
MIDLAND, TX. 79705  
(800) 767-1653

# VICINITY MAP



SECTION 9 TWP 24-S RGE 33-E  
 SURVEY NEW MEXICO PRINCIPAL MERIDIAN  
 COUNTY LEA STATE NM  
 DESCRIPTION 1000' FNL & 1100' FEL

OPERATOR ENRON OIL & GAS COMPANY  
 LEASE ENRON "9" STATE COM #2

DISTANCE & DIRECTION FROM THE JCT. OF STATE HWY.  
128 & COUNTY ROAD 21, ±21 MILES WEST OF JAL, GO  
WEST 3.2 MILES ON STATE HWY. 128, THENCE NORTHERLY  
1.8 MILES ON CALICHE ROAD TO A POINT ±1500' EAST  
OF THE LOCATION.

This location has been very carefully staked on the ground according to the best official survey records, maps, and other data available to us.  
 Review this plat and notify us immediately of any possible discrepancy.

## TOPOGRAPHIC LAND SURVEYORS

*Surveying & Mapping for the Oil & Gas Industry*

1307 N. HOBART  
 PAMPA, TX. 79065  
 (800) 658-6382

6709 N. CLASSEN BLVD.  
 OKLAHOMA CITY, OK. 73116  
 (800) 654-3219

2903 N. BIG SPRING  
 MIDLAND, TX. 79705  
 (800) 767-1653

8/5/11  
2.11

RECEIVED  
JUL 1998  
RECEIVED  
JUL 1998