

District I
PO Box 1980, Hobbs, NM 88241-1980
District II
811 S. 1st Street, Artesia, NM 88210-2834
District III
1000 Rio Brazos Rd., Aztec, NM 87410
District IV
2040 South Pacheco, Santa Fe, NM 87505

State of New Mexico
Energy, Minerals & Natural Resources Department

OIL CONSERVATION DIVISION
2040 South Pacheco
Santa Fe, NM 87505

Form C-101
Revised October 18, 1994
Instructions on back
Submit to Appropriate District Office
State Lease - 6 Copies
Fee Lease - 5 Copies

☐ AMENDED REPORT

APPLICATION FOR PERMIT TO DRILL, RE-ENTER, DEEPEN, PLUGBACK, OR ADD A ZONE

¹ Operator name and Address Enron Oil & Gas Company P.O. Box 2267 Midland, TX 79702		² OGRID Number 7377
		³ API Number 30-025-34572
⁴ Property Code 23693	⁵ Property Name Triste Draw "34" State	⁶ Well No. 2

⁷ Surface Location									
UL or lot no.	Section	Township	Range	Lot. Idn	Feet from the	North/South Line	Feet from the	East/West line	County
0	34	24S	33E		660	South	1883	East	Lea

⁸ Proposed Bottom Hole Location If Different From Surface									
UL or lot no.	Section	Township	Range	Lot. Idn	Feet from the	North/South Line	Feet from the	East/West line	County
⁹ Proposed Pool 1 Wildcat Johnson Ranch Wolfcamp					¹⁰ Proposed Pool 2 Pitchfork Ranch				

¹¹ Work Type Code N	¹² Well Type Code G	¹³ Cable/Rotary R	¹⁴ Lease Type Code S	¹⁵ Ground Level Elevation 3481
¹⁶ Multiple N	¹⁷ Proposed Depth 14,200'	¹⁸ Formation Wolfcamp	¹⁹ Contractor	²⁰ Spud Date 3-1-99

²¹ Proposed Casing and Cement Program					
Hole Size	Casing Size	Casing weight/foot	Setting Depth	Sacks of Cement	Estimated TOC
14-3/4"	11-3/4 H40	ST&C 42#	650	350 CL C	Surface
11"	8-5/8 J55	LT&C 32#	4000	1050 C Prem +	Surface
11"	8-5/8 HCK	LT&C 32#	5000	1050 C Prem +	Surface
7-7/8"	5-1/2 S95/P110	LT&C 17#	13000	1180 Prem	4500'
4-3/4"	2-7/8 N-80	6 5#	14200	135 Prem	12300'

²² Describe the proposed program. If this application is to DEEPEN or PLUG BACK give the data on the present productive zone and proposed new productive zone. Describe the blowout prevention program, if any. Use additional sheets if necessary

11-3/4" - 200 sx Prem Plus, 3% Econolite, 2% Calcium Chloride, 0.25#/sx Flocele
150 sx Prem Plus, 2% Calcium Chloride
8-5/8" - 800 sx Interfill C, .25#/sx Flocele
250 sx Premium Plus, 2% Calcium Chloride
5-1/2" - 930 sx Premium, 3% Econolite, 5#/sx Salt (3%), .25#/sx Flocele
250 sx Prem 50/50 Poz mix 'A', 2% Halliburton-Gel First 2%, 0.5% Halad-322, 0.2% HR-5
2-7/8" - 135 sx Premium Cement, 0.3% Halad-344, 0.3% Halad-413, 0.3% Super CBL, 0.3% SCR-100
BOP Diagram Attached.

²³ I hereby certify that the information given above is true and complete to the best of my knowledge and belief. Signature: <i>Mike Francis</i> Printed name: Mike Francis Phone: (915)686-3714 Title: Agent Date: 2-2-99	OIL CONSERVATION DIVISION Approved by: ORIGINAL SIGNED BY CHRIS WILLIAMS DIRECTOR, OCS Title: Approval Date: 2-2-99 Expiration Date:
--	---

Expires 1 Year From Approval
If Drilling Underway

District I
PO Box 1980, Hobbs, NM 88241-1980

District II
PO Drawer DD, Artesia, NM 88211-0719

District III
1000 Rio Brazos Rd., Aztec, NM 87410

District IV
PO Box 2088, Santa Fe, NM 87504-2088

State of New Mexico
Energy, Minerals & Natural Resources Department

OIL CONSERVATION DIVISION
PO Box 2088
Santa Fe, NM 87504-2088

Form C-102
Revised February 21, 1994
Instructions on back
Submit to Appropriate District Office
State Lease - 4 Copies
Fee Lease - 3 Copies

☐ AMENDED REPORT

WELL LOCATION AND ACREAGE DEDICATION PLAT

¹ API Number 30-025-34572	² Pool Code 79335	³ Pool Name W. West Johnson Ranch Wolfcamp
⁴ Property Code 23693	⁵ Property Name TRISTE DRAW "34" STATE No. 2	
⁷ OGRID No. 7377	⁸ Operator Name ENRON OIL & GAS COMPANY	⁶ Well Number 2
		⁹ Elevation 3481'

¹⁰Surface Location

UL or lot no.	Section	Township	Range	Lot Idn	Feet from the	North/South line	Feet from the	East/West line	County
0	34	24-S	33-E		660	SOUTH	1883	EAST	LEA

¹¹Bottom Hole Location If Different From Surface

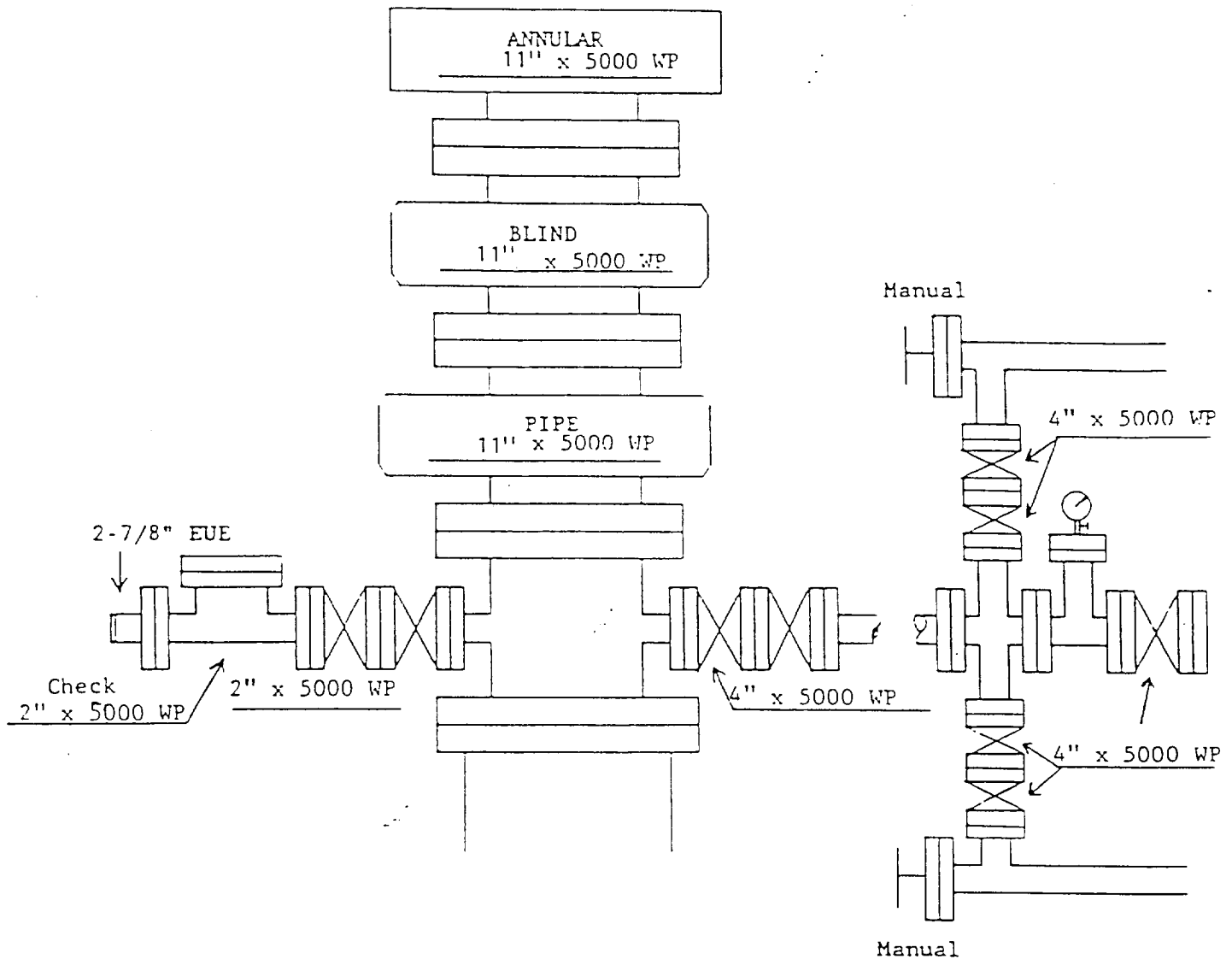
UL or lot no.	Section	Township	Range	Lot Idn	Feet from the	North/South line	Feet from the	East/West line	County
¹² Dedicated Acres 320		¹³ Joint or Infill		¹⁴ Consolidation Code		¹⁵ Order No.			

NO ALLOWABLE WILL BE ASSIGNED TO THIS COMPLETION UNTIL ALL INTERESTS HAVE BEEN CONSOLIDATED
OR A NON-STANDARD UNIT HAS BEEN APPROVED BY THE DIVISION

16				<p>¹⁷ OPERATOR CERTIFICATION</p> <p>I hereby certify that the information contained herein is true and complete to the best of my knowledge and belief.</p> <p><i>Mike Francis</i> Signature Mike Francis Printed Name Agent Title 2-1-99 Date</p>
				<p>¹⁸ SURVEYOR CERTIFICATION</p> <p>I hereby certify that the well location shown on this plat was plotted from field notes of actual surveys made by me or under my supervision, and that the same is true and correct to best of my belief.</p> <p>11-10-98 Date of Survey</p> <p>Signature and Seal of Professional Surveyor: <i>Earl Foote</i> Certificate Number 8228</p>
<p>ENRON OIL & GAS COMPANY TRISTE DRAW "34" STATE NO. 2</p> <p>LAT. = 32° 10' 06.7" LONG. = 103° 33' 26.1" Y = 425898.0 X = 740139.6</p> <p>1883'</p> <p>660'</p>				

ENRON OIL & GAS COMPANY
Tristè Draw "34" State No. 2

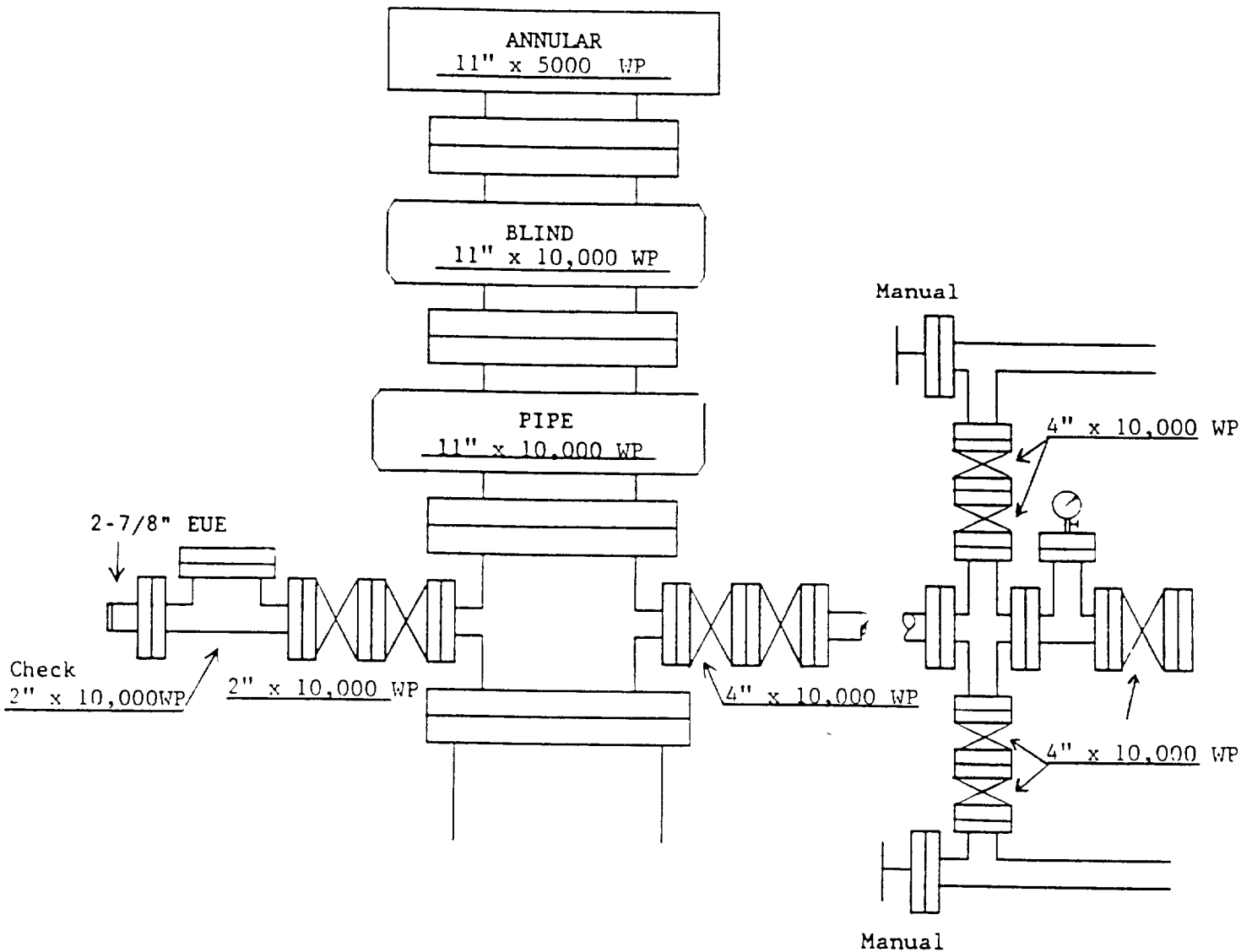
Attachment I



Nipple up this equipment at +/-650' and use until +/-12,800'

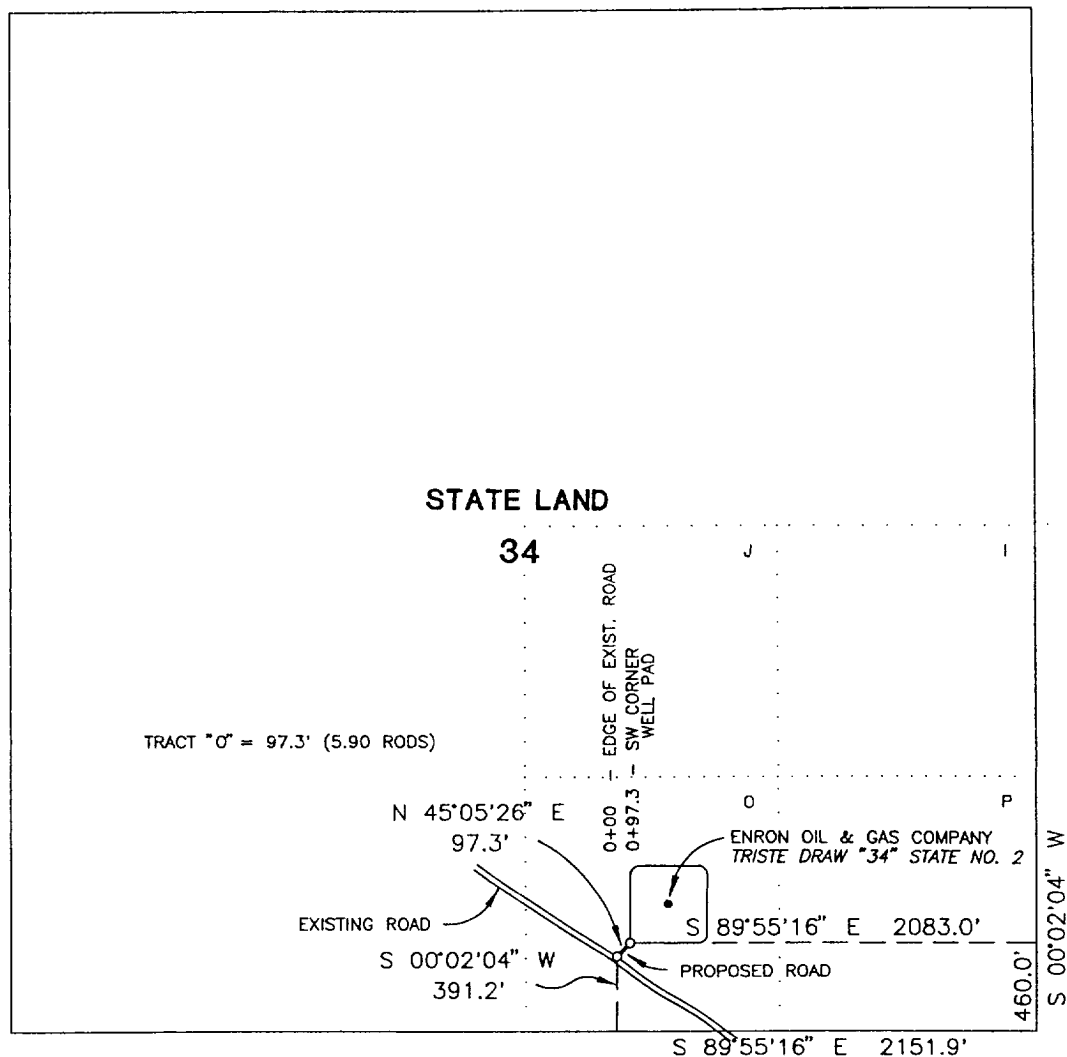
ENRON OIL & GAS COMPANY
Triste Draw "34" State No. 2

Attachment II



Nipple up this equipment at +/-12,800' and use until TD

SECTION 34, TOWNSHIP 24 SOUTH, RANGE 33 EA i, N.M.P.M.
LEA COUNTY, NEW MEXICO



CENTERLINE DESCRIPTION OF A PROPOSED ROAD:

BEGINNING at a point in an existing road, from which point the southeast corner of Section 34, T-24-S, R-33-E, N.M.P.M., Lea County, New Mexico, bears S 00° 02' 04" W, 391.2 feet and S 89° 55' 16" E, 2151.9 feet;

THENCE N 45° 05' 26" E, with the centerline of proposed road, 97.3 feet to a point in the southwest corner of a well pad for Enron Oil & Gas Company TRISTE DRAW "34" STATE No. 2, for the end of this road, from which point the southeast corner of said Section 34 bears S 89° 55' 16" E, 2083.0 feet and S 00° 02' 04" W, 460.0 feet.

I hereby certify that this plat was prepared from an actual survey made on the ground and meets or exceeds all requirements for land surveys as specified by the state of New Mexico.

Earl Foote
Registered Professional Surveyor
New Mexico Certificate No. 8278



PROPOSED ROAD TO SERVE
TRISTE DRAW "34" STATE No. 2

ENRON OIL AND GAS COMPANY

97.3 feet of proposed road in
Section 34, T-24-S, R-33-E, N.M.P.M.,
Lea County, New Mexico

WEST TEXAS CONSULTANTS, INC.

ENGINEERS-PLANNERS-SURVEYORS

MIDLAND, TEXAS

Survey Date: 11-09-98

Date: 11-10-98

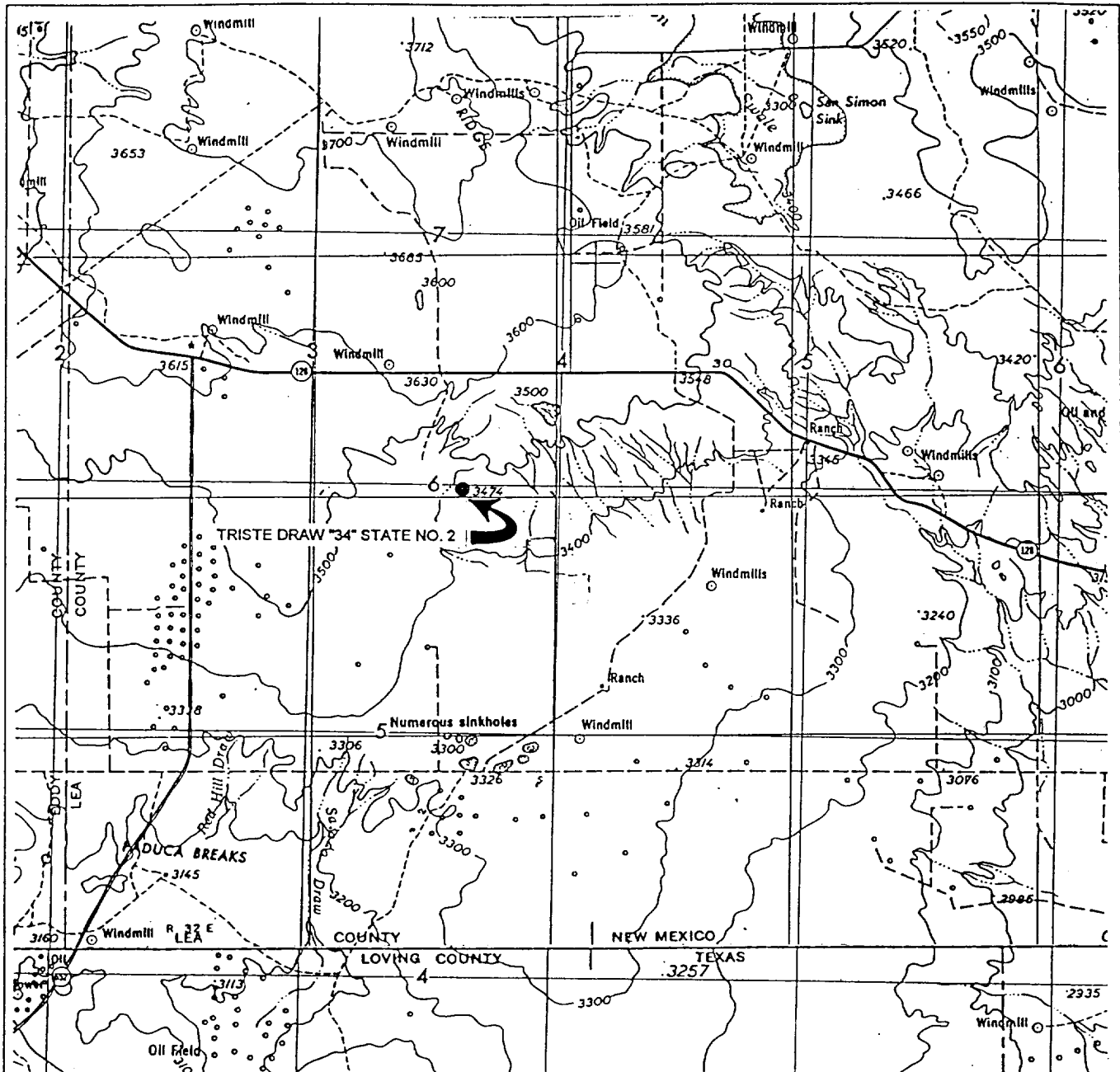
Scale: 1" = 1000'

WTC No. 45449

Drawn By: JJJ

Sheet 1 of 1

VICINITY MAP



WTC 45449

SCALE: 1" = 4 MILES

SEC. 34 TWP. 24-S RGE. 33-E

SURVEY N.M.P.M.

COUNTY LEA STATE NM

DESCRIPTION 660' FSL & 1883' FEL

ELEVATION 3481'

OPERATOR ENRON OIL & GAS COMPANY

LEASE TRISTE DRAW "34" STATE NO. 2

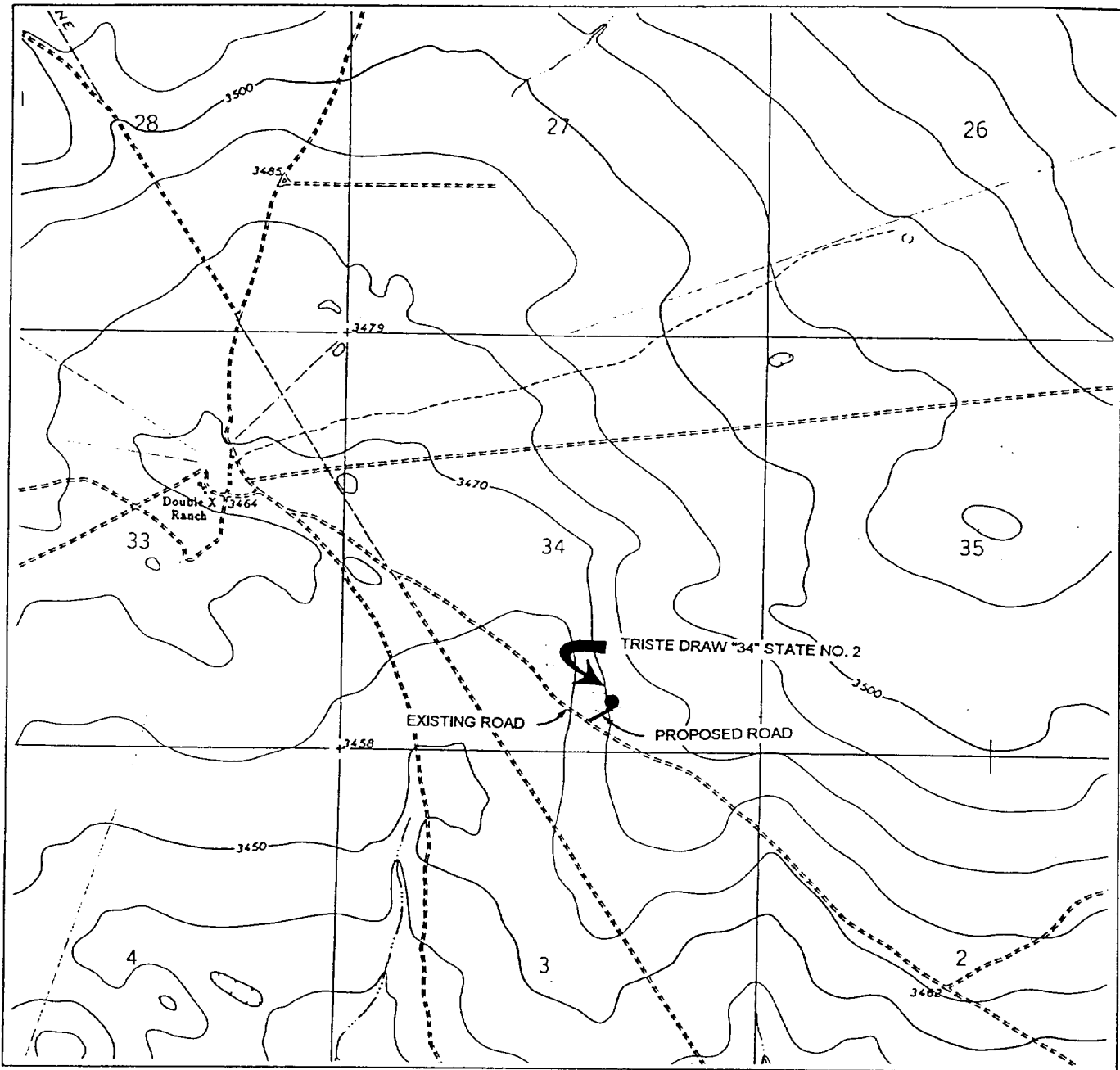
WEST TEXAS CONSULTANTS, INC.

ENGINEERS-PLANNERS-SURVEYORS

MIDLAND, TEXAS

915-685-3800

LOCATION VERIFICATION MA.



WTC 45449

SCALE: 1" = 2,000'
CONTOUR INTERVAL=10'

SEC. 34 TWP. 24-S RGE. 33-E

SURVEY N.M.P.M.

COUNTY LEA STATE NM

DESCRIPTION 660' FSL & 1883' FEL

ELEVATION 3481'

OPERATOR ENRON OIL & GAS COMPANY

LEASE TRISTE DRAW "34" STATE NO. 2

U.S.G.S. TOPO. MAP
BELL LAKE, N. MEX.

WEST TEXAS CONSULTANTS, INC.

ENGINEERS-PLANNERS-SURVEYORS

MIDLAND, TEXAS

915-685-3800

ABOVE DATE DOES NOT
INDICATE WHEN
CONFIDENTIAL LOGS
WILL BE RELEASED

ELF

12/22/97