

DISTRICT I  
P.O. Box 1288, Hobbs, NM 88241-1288

DISTRICT II  
P.O. Drawer 28, Artesia, NM 88211-0719

DISTRICT III  
1000 Rio Branson Rd., Aztec, NM 87410

DISTRICT IV  
P.O. BOX 2088, SANTA FE, N.M. 87504-2088

State of New Mexico  
Energy, Minerals and Natural Resources Department

Form C-102  
Revised February 10, 1994  
Submit to Appropriate District Office  
State Lease - 4 Copies  
Fee Lease - 3 Copies

OIL CONSERVATION DIVISION

P.O. Box 2088  
Santa Fe, New Mexico 87504-2088

☐ AMENDED REPORT

WELL LOCATION AND ACREAGE DEDICATION PLAT

API Number 30-025-34768	Pool Code 79240	Pool Name Jalmat Tan Yates 7 Rvrs., Gas
Property Code 21825	Property Name MYERS B	Well Number 8
OGRID No. 162683	Operator Name GRUY PETROLEUM MANAGEMENT CO.	Elevation 3369

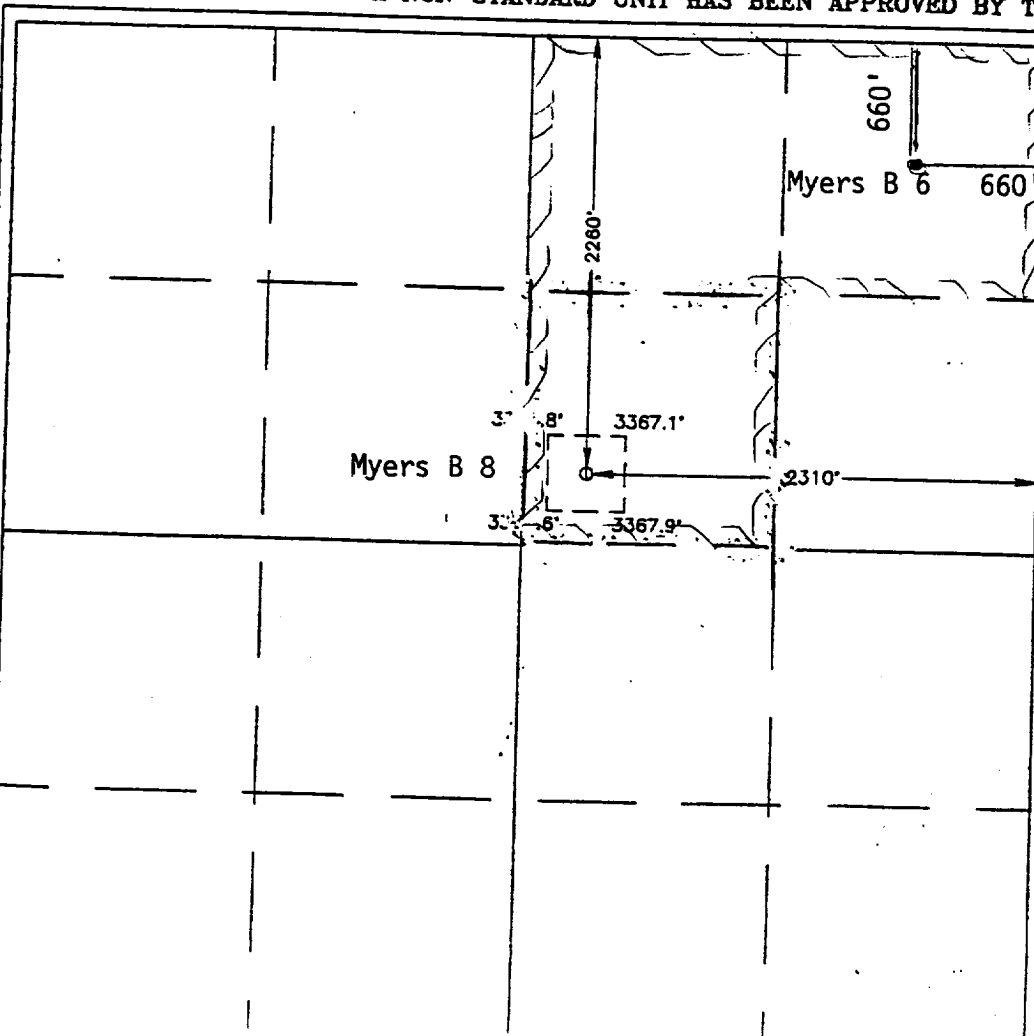
Surface Location

UL or lot No. G	Section 11	Township 24 S	Range 36 E	Lot Idn	Feet from the 2260	North/South line NORTH	Feet from the 2310	East/West line EAST	County LEA
--------------------	---------------	------------------	---------------	---------	-----------------------	---------------------------	-----------------------	------------------------	---------------

Bottom Hole Location If Different From Surface

UL or lot No.	Section	Township	Range	Lot Idn	Feet from the	North/South line	Feet from the	East/West line	County
Dedicated Acres 120	Joint or Infill Y	Consolidation Code	Order No.						

NO ALLOWABLE WILL BE ASSIGNED TO THIS COMPLETION UNTIL ALL INTERESTS HAVE BEEN CONSOLIDATED  
OR A NON-STANDARD UNIT HAS BEEN APPROVED BY THE DIVISION



OPERATOR CERTIFICATION

I hereby certify that the information  
contained herein is true and complete to the  
best of my knowledge and belief.

*Zeno Farris*  
Signature

Zeno Farris  
Printed Name

Mgr., Ops Admin.  
Title

July 17, 2001  
Date

SURVEYOR CERTIFICATION

I hereby certify that the well location shown  
on this plat was plotted from field notes of  
actual surveys made by me or under my  
supervision, and that the same is true and  
correct to the best of my belief.

SEPTEMBER 27, 1999

Date Surveyed

Signature of Surveyor  
Professional Surveyor

NEW MEXICO  
3239  
49-11-0754

Certificate No. RONALD L. EIDSON 3239  
12541

