

DISTRICT I

P.O. Box 1980, Hobbs, NM 88240

DISTRICT II

P.O. Box Drawer DD, Artesia, NM 88210

DISTRICT III

1000 Rio Brazos Rd., Aztec, NM 87410

OIL CONSERVATION DIVISION

P.O. Box 2088

Santa Fe, New Mexico 87504-2088

WELL API NO.

30-025-34974

5. Indicate Type of Lease

STATE

FEE ☒

6. State Oil / Gas Lease No.

SUNDRY NOTICES AND REPORTS ON WELLS
(DO NOT USE THIS FORM FOR PROPOSALS TO DRILL OR TO DEEPEN OR PLUG BACK TO
DIFFERENT RESERVOIR. USE "APPLICATION FOR PERMI
(FORM C-101) FOR SUCH PROPOSALS.

1. Type of Well: OIL WELL ☒ GAS WELL ☐ OTHER ☐

2. Name of Operator
TEXACO EXPLORATION & PRODUCTION INC.

3. Address of Operator
205 E. Bender, HOBBS, NM 88240

4. Well Location

Unit Letter G : 1650 Feet From The NORTH Line and 1650 Feet From The EAST Line

Section 8 Township 23-S Range 37-E NMPM LEA COUNTY

10. Elevation (Show whether DF, RKB, RT, GR, etc.) 3324'

7. Lease Name or Unit Agreement Name

DAVIS F B

8. Well No.

7

9. Pool Name or Wildcat

TEAGUE LOWER PADDOCK BLINEBRY N. ASSOC

11. Check Appropriate Box to Indicate Nature of Notice, Report, or Other Data

NOTICE OF INTENTION TO:

PERFORM REMEDIAL WORK ☐ PLUG AND ABANDON ☐

TEMPORARILY ABANDON ☐ CHANGE PLANS ☐

PULL OR ALTER CASING ☐

OTHER: DHC TUBB & BLINEBRY ☒

SUBSEQUENT REPORT OF:

REMEDIAL WORK ☐ ALTERING CASING ☐

COMMENCE DRILLING OPERATION ☐ PLUG AND ABANDONMENT ☐

CASING TEST AND CEMENT JOB ☐

OTHER: ☐

12. Describe Proposed or Completed Operations (Clearly state all pertinent details, and give pertinent dates, including estimated date of starting any proposed work) SEE RULE 1103.

Notice of intent to downhole commingle the Lower Paddock/Blinebry,N.(assoc.) pool with the Teague Tubb,N.(Assoc) pool in the subject well.

Division Order No. R-11363

This commingling will not reduce the value of the total remaining production and will allow Texaco to recover add'l reserves that would not have been economically viable to capture otherwise.

Teague Lower Paddock/Blinebry, N. (Assoc) - 96314 pool code

Teague Tubb, N. (Assoc) - 96315

Perforated intervals are:

Blinebry: 5588-5876'

Tubb: 6224-6372'

Allocation Method:

Blinebry: 30 oil / 15 mcf Production Splits: 60% of oil / 33% of gas

Tubb: 20 oil / 30 mcf Production Splits: 40% of oil / 67% of gas

Ownership and percentages between the Teague Lower Paddock Blinebry, N.(Assoc.) and the Teague Tubb, N. (Assoc) are identical for the specified well and lease.

DI DHC Order No. 0022

I hereby certify that the information above is true and complete to the best of my knowledge and belief.

SIGNATURE *J. Denise Leake* TITLE Engineering Assistant

DATE 3/20/01

TYPE OR PRINT NAME J. Denise Leake

Telephone No. 397-0405

(This space for State Use)

APPROVED

BY CONDITIONS OF APPROVAL IF ANY: TITLE

DATE

February 6, 2001

NMOCD

Attn: Chris Williams
1625 N French Drive
Hobbs, NM 88240

RE: Notice of Intent to Down-hole Commingle the Lower Paddock/Blinebry, N. (Assoc.) Pool with the Teague Tubb, N. (Assoc.) Pool in the F.B. Davis #7 Well.

Dear Sir:

Texaco Exploration and Production, Inc. respectfully states its intention to down-hole commingle the Teague Lower Paddock/Blinebry, N (Assoc.) and Teague Tubb, N. (Assoc.) pools for the F.B. Davis #7 well, as pre-approved by **Division Order No. R-11363**. We state that this commingling will not reduce the value of the total remaining production. Instead, commingling will allow our company to recover additional reserves that would not have been economically viable to capture otherwise.

The above cited well will be tested in the Teague Lower Paddock/Blinebry, N (Assoc.) (Pool Code 96314) and an established rate and pressure will be documented before DHC with the Teague Tubb, N (Assoc.) pool (Pool Code 96315). Production splits will be determined from this testing based on relative proportions, as indicated in the following example:

Blinebry:	30 oil / 15 mcf	Production Splits:	60% of oil / 33% of gas
Tubb:	20 oil / 30 mcf	Production Splits:	40% of oil / 67% of gas

The perforated intervals for each pool are as follows:

Blinebry:	5588 - 5876'
Tubb:	6224 - 6372'

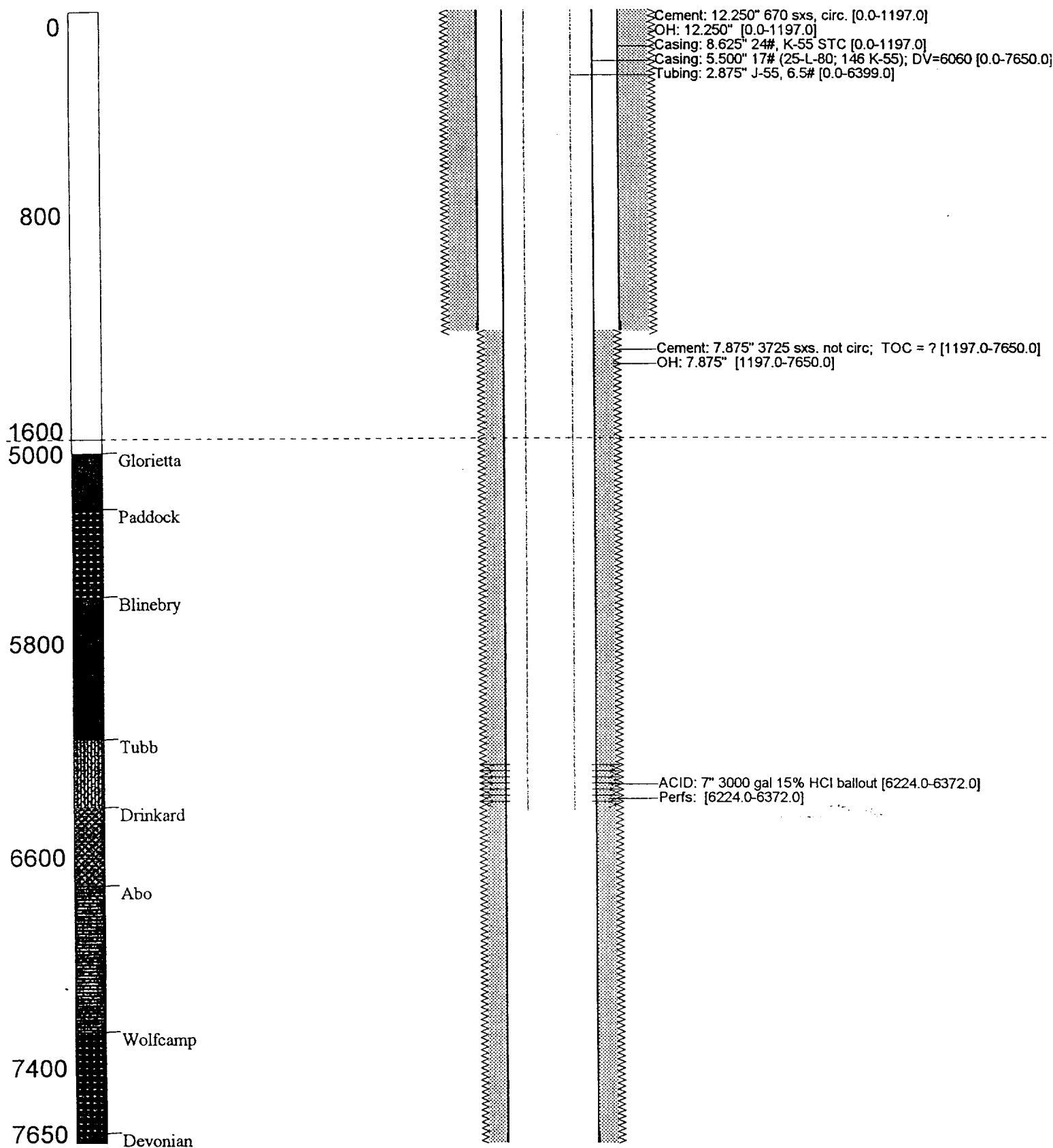
Ownership and percentages between the Teague Lower Paddock/Blinebry, N. (Assoc.) and the Teague Tubb, N. (Assoc.) are identical for the specified well and lease.

If you have any questions concerning this matter, please contact Denise Leake at (915) 688-4752 or myself at (915) 688-4639. Thank you in advance for your attention to this.

Sincerely,

Tim Nein
Production Engineer
Hobbs Operating Unit

cc: File



DISTRICT I

P.O. Box 1980, Hobbs, NM 88241-1980

DISTRICT II

P.O. Box Drawer DD, Artesia, NM 88211-0719

DISTRICT III

1000 Rio Brazos Rd., Aztec, NM 87410

DISTRICT IV

P.O. Box 2088, Santa Fe, NM 87504-2088

State of New Mexico
Energy, Minerals and Natural Resources Department

OIL CONSERVATION DIVISION

P.O. Box 2088
Santa Fe, New Mexico 87504-2088

Form C-10 2

Revised February 10, 1999

Instructions on back

Submit to Appropriate District Office

State Lease - 4 Copie

Fee Lease - 3 Copie

AMENDED REPORT

WELL LOCATION AND ACREAGE DEDICATION PLAT

¹ API Number 30-025-34974	² Pool Code 96314	³ Pool Name TEAGUE LOWER PADDOCK-BLINEBRY, N. ASSOC
⁴ Property Code 13195	⁵ Property Name DAVIS F B	⁶ Well No. 7
⁷ OGRID Number 022351	⁸ Operator Name TEXACO EXPLORATION & PRODUCTION INC.	⁹ Elevation 3324'

¹⁰ Surface Location

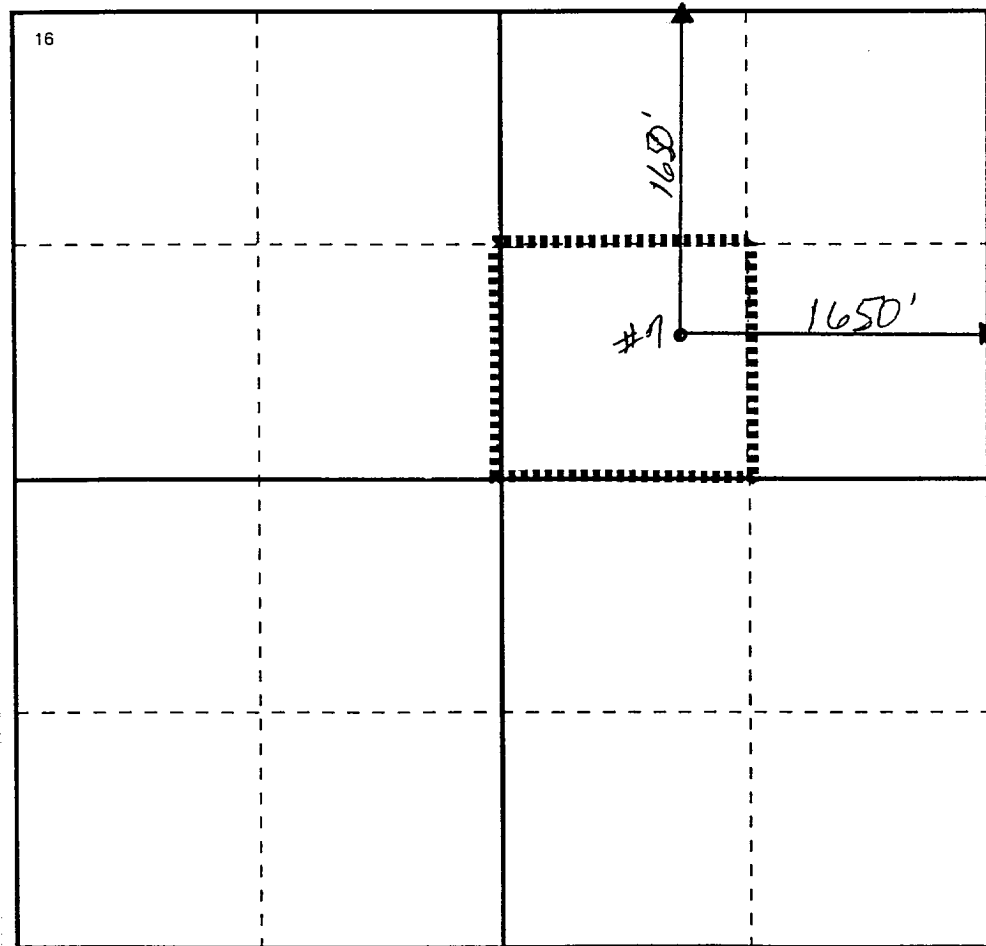
UI or lot no	Section	Township	Range	Lot.Idn	Feet From The	North/South Line	Feet From The	East/West Line	County
G	8	23-S	37-E		1650	NORTH	1650	EAST	LEA

¹¹ Bottom Hole Location If Different From Surface

UI or lot no	Section	Township	Range	Lot.Idn	Feet From The	North/South Line	Feet From The	East/West Line	County

¹² Dedicated Acre 40	¹³ Joint or Infill No	¹⁴ Consolidation Code	¹⁵ Order No.
------------------------------------	-------------------------------------	----------------------------------	-------------------------

NO ALLOWABLE WILL BE ASSIGNED TO THIS COMPLETION UNTIL ALL INTERESTS HAVE BEEN CONSOLIDATED
OR A NON-STANDARD UNIT HAS BEEN APPROVED BY THE DIVISION

¹⁷ OPERATOR CERTIFICATION

I hereby certify that the information
contained herein is true and complete to the
best of my knowledge and belief

Signature

J. Denise Leake

Printed Name

J. Denise Leake

Positio

Engineering Assistant

Date

2/16/01

¹⁸ SURVEYOR CERTIFICATION

I hereby certify that the well location shown
on this plat was plotted from field notes of
actual surveys made by me or under my
supervision, and that the same is true and
correct to the best of my knowledge and
belief.

Date Surveyed

Signature & Seal of

Professional Surveyor

Certificate No.

0 330 660 990 132 165 1980 2310 2640 2000 1500 1000 500 0

DISTRICT II

P.O. Box Drawer DD, Artesia, NM 88211-0719

DISTRICT III

1000 Rio Brazos Rd., Aztec, NM 87410

DISTRICT IV

P.O. Box 2088, Santa Fe, NM 87504-2088

OIL CONSERVATION DIVISION

P.O. Box 2088

Santa Fe, New Mexico 87504-2088

Instructions on back
Submit to Appropriate District Office
State Lease - 4 Copy
Fee Lease - 3 Copy☐ AMENDED REPORT

WELL LOCATION AND ACREAGE DEDICATION PLAT

¹ API Number 30-025-34974	² Pool Code 96315	³ Pool Name TEAGUE TUBB, NORTH ASSOC
⁴ Property Code 13195	⁵ Property Name DAVIS F B	⁶ Well No. 7
⁷ OGRID Number 022351	⁸ Operator Name TEXACO EXPLORATION & PRODUCTION INC.	⁹ Elevation 3324'

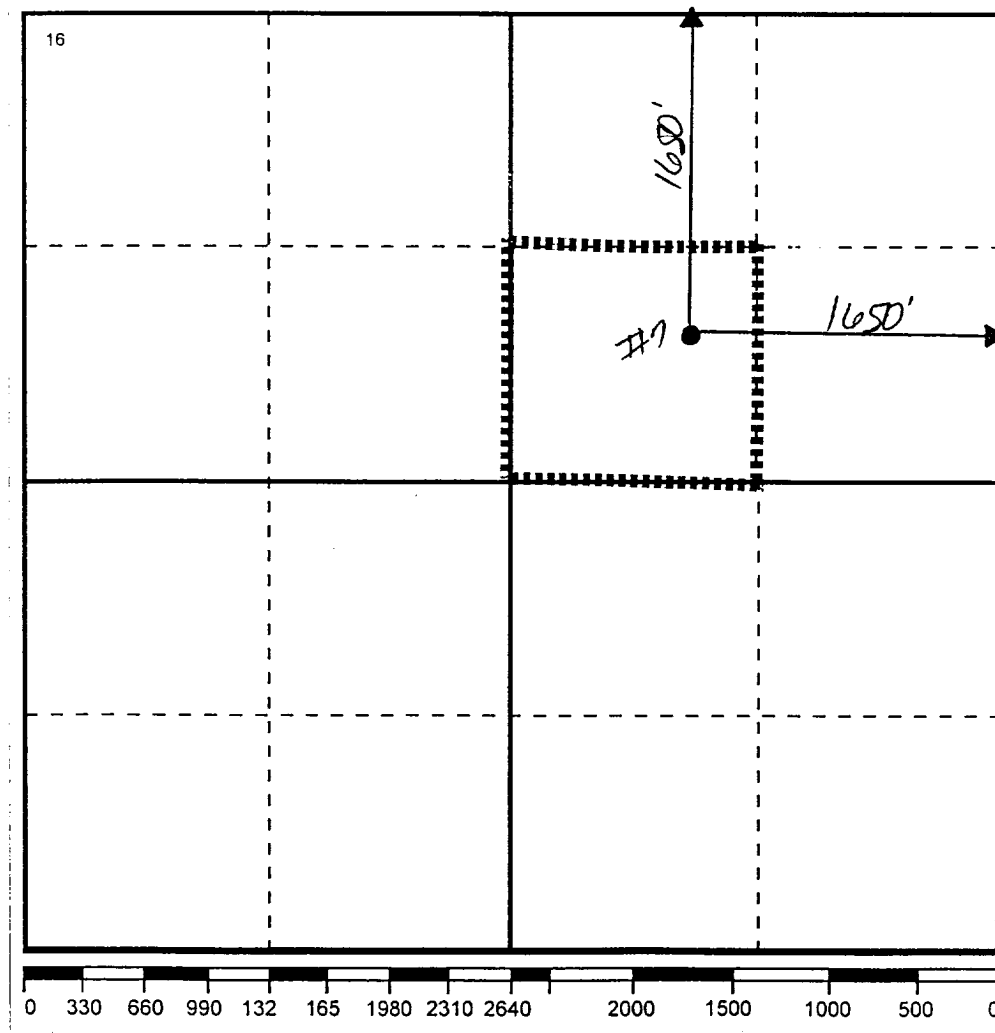
¹⁰ Surface Location

UI or lot no	Section	Township	Range	Lot.Idn	Feet From The	North/South Line	Feet From The	East/West Line	County
G	8	23-S	37-E		1650	NORTH	1650	EAST	LEA

¹¹ Bottom Hole Location If Different From Surface

UI or lot no	Section	Township	Range	Lot.Idn	Feet From The	North/South Line	Feet From The	East/West Line	County
--------------	---------	----------	-------	---------	---------------	------------------	---------------	----------------	--------

¹² Dedicated Acre 40	¹³ Joint or Infill No	¹⁴ Consolidation Code	¹⁵ Order No.
------------------------------------	-------------------------------------	----------------------------------	-------------------------

NO ALLOWABLE WILL BE ASSIGNED TO THIS COMPLETION UNTIL ALL INTERESTS HAVE BEEN CONSOLIDATED
OR A NON-STANDARD UNIT HAS BEEN APPROVED BY THE DIVISION

17 OPERATOR CERTIFICATION

I hereby certify that the information
contained herein is true and complete to the
best of my knowledge and belief

Signature

J. Denise Leake

Printed Name

J. Denise Leake

Positio

Engineering Assistant

Date

2/16/01

18 SURVEYOR CERTIFICATION

I hereby certify that the well location shown
on this plat was plotted from field notes of
actual surveys made by me or under my
supervision, and that the same is true and
correct to the best of my knowledge and
belief.

Date Surveyed

Signature & Seal of

Professional Surveyor

Certificate No.