

DISTRICT I

P.O. Box 1980, Hobbs, NM 88241-1980

DISTRICT II

P.O. Box Drawer DD, Artesia, NM 88211-0719

DISTRICT III

1000 Rio Brazos Rd., Aztec, NM 87410

DISTRICT IV

P.O. Box 2088, Santa Fe, NM 87504-2088

State of New Mexico

Energy, Minerals and Natural Resources Department

Form C-101

Revised February 10, 1994

Instructions on back

Submit to Appropriate District Office

State Lease - 6 Copies

Fee Lease - 5 Copies

OIL CONSERVATION DIVISION

P.O. Box 2088

Santa Fe, New Mexico 87504-2088

☐ AMENDED REPORT

APPLICATION FOR PERMIT TO DRILL, RE-ENTER, DEEPEN, PLUGBACK, OR ADD A ZONE

¹ Operator Name and Address TEXACO EXPLORATION & PRODUCTION INC. P.O. Box 3109, Midland Texas 79702		² OGRID Number 022351
⁴ Property Code 13195	⁵ Property Name F B DAVIS	³ API Number 30-025-34974
		⁶ Well No. 7

⁷ Surface Location

UI or lot no.	Section	Township	Range	Lot.Idn	Feet From The	North/South Line	Feet From The	East/West Line	County
G	8	23-S	37-E		1650	NORTH	1650	EAST	LEA

⁸ Proposed Bottom Hole Location If Different From Surface

UI or lot no.	Section	Township	Range	Lot.Idn	Feet From The	North/South Line	Feet From The	East/West Line	County

⁹ Proposed Pool 1 Teague, L Paddock-Blinbry, No/Teague Tubb, No	¹⁰ Proposed Pool 2 Teague Glorieta-U Paddock, SW/Teague Drinkard-Abo, No
---	--

¹¹ Work Type Code N	¹² Well Type Code O	¹³ Rotary or C.T. ROTARY	¹⁴ Lease Type Code P	¹⁵ Ground Level Elevation 3324'
¹⁸ Multiple No	¹⁷ Proposed Depth 7600'	¹⁶ Formation Abo Paddock-Blinbry	¹⁹ Contractor	²⁰ Spud Date 3/17/2000

²¹ Proposed Casing and Cement Program

SIZE OF HOLE	SIZE OF CASING	WEIGHT PER FOOT	SETTING DEPTH	SACKS OF CEMENT	EST. TOP
12 1/4"	8 5/8"	24#	1200'	670	SURFACE
7 7/8"	5 1/2"	17#	7600'	1560	SURFACE

²² Describe the proposed program. If this application is to DEEPEN or PLUG BACK give the data on the present productive zone and proposed new productive zone.
Describe the blowout prevention program, if any. Use additional sheets if necessary.

CEMENTING PROGRAM:

SURFACE CASING: 530 SACKS CLASS C w/4% GEL, 2% CC (13.5 PPG, 1.74 CF/S, 9.11 GW/S). F/B 140 SACKS CLASS C w/2% CC (14.8 PPG, 1.34 CF/S, 6.40 GW/S).

PRODUCTION CASING: 460 SACKS 50/50 POZ CLASS H w/2% GEL, 5% SALT, 1/4# FC (14.2 PPG, 1.35 CF/S, 6.3 GW/S). F/B 830 SACKS 35/65 POZ CLASS H w/6% GEL, 5% SALT, 1/4# FC (12.4 PPG, 2.14 CF/S, 11.9 GW/S). F/B 270 SACKS 50/50 POZ CLASS H w/2% GEL, 5% SALT 1/4# FC (14.2 PPG, 1.35 CF/S, 6.3 GW/S).

Permit Expires 1 Year From Approval
Date of Last Drilling: 11/19/94

²³ I hereby certify that the rules and regulations of the Oil Conservation Division have been complied with and that the information given above is true and complete to the best of my knowledge and belief.		OIL CONSERVATION DIVISION	
Signature <i>A. Phil Ryan</i>			
Printed Name <i>A. Phil Ryan</i>		Approved By: <i>GARY V...</i>	
Title <i>Commission Coordinator</i>		Title:	
Date 3/7/2000	Telephone 688-4606	Approval Date: <i>MAR 17 2000</i>	Expiration Date:
		Conditions of Approval: Attached <input type="checkbox"/>	

24
1944
Received
Horns
11/11

DISTRICT 1
P. O. Box 1980, Hobbs, NM 88240

DISTRICT II
P. O. Drawer DD, Artesia, NM 88210

DISTRICT III
1000 Rio Brazos Rd., Aztec, NM 87410

DISTRICT IV
P. O. Box 2088, Santa Fe, NM 87504-2088

State of New Mexico
Energy, Minerals and Natural Resources Department

Energy, Minerals and Natural Resources Department

OIL CONSERVATION DIVISION

P.O. Box 2088
Santa Fe, NM 87504-2088

Form C-102
Revised February 10, 1994

instructions on back

Submit to Appropriate District Office

State Lease-4 copies
Fed Lease-3 copies

☐ AMENDED REPORT

WELL LOCATION AND ACREAGE DEDICATION PLAT

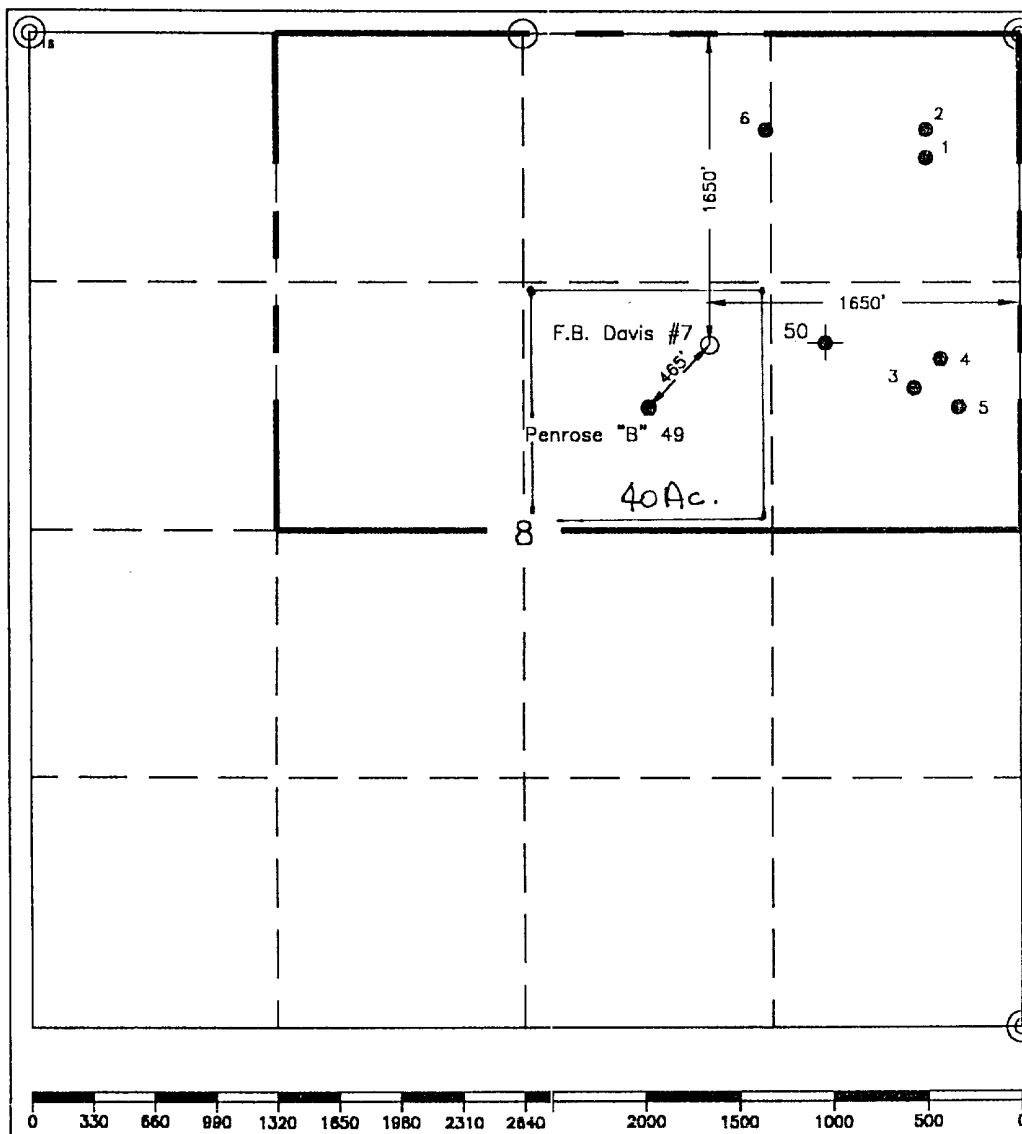
¹ API Number 30-025-34974	² Pool Code 96313	³ Pool Name Teague, L. Paddock-Blinebry, No.; Teague, Tubb, No.; Teague, Glorieta-Upper Paddock, SW	
⁴ Property Code 13195	⁵ Property Name F. B. Davis	⁶ Well Number 7	
⁷ GRID No. 22351	⁸ Operator Name TEXACO EXPLORATION & PRODUCTION, INC.	⁹ Elevation 3324'	

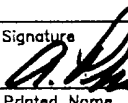

10 Surface Location									
UL or lot no.	Section	Township	Range	Lot Idn	Feet from the	North/South line	Feet from the	East/West line	County
G	8	23-S	37-E		1650'	North	1650'	East	Lea

11 Bottom Hole Location If Different From Surface									
UL or lot no.	Section	Township	Range	Lot ldn	Feet from the	North/South line	Feet from the	East/West line	2County

12Dedicated Acres 40	13Joint or Infill	14Consolidation Code	15Order No.
-------------------------	-------------------	----------------------	-------------

NO ALLOWABLE WILL BE ASSIGNED TO THIS COMPLETION UNTIL ALL INTERESTS HAVE BEEN CONSOLIDATED
OR A NON-STANDARD UNIT HAS BEEN APPROVED BY THE DIVISION.



OPERATOR CERTIFICATION	
I hereby certify that the information contained herein is true and complete to the best of my knowledge and belief.	
Signature	
Printed Name	A. Phil Ryan
Position	Coordinator Commissioner
Company	Texaco Expl. & Prod. Inc.
Date	February 28, 2000
SURVEYOR CERTIFICATION	
I hereby certify that the well location shown on this plat was plotted from field notes of actual surveys made by me or under my supervision, and that the same is true and correct to the best of my knowledge and belief.	
Date Surveyed	February 24, 2000
Signature & Seal of Professional Surveyor	
Certificate No.	7254 John S. Piper
Sheet	

○ = Staked Location ● = Producing Well = Injection Well ⦿ = Water Supply Well ⊕ = Plugged & Abandon Well
 ⊙ = Found Section Corner, 2 or 3" Iron Pipe & GLO B.C. ○ = Found 1/4 Section Corner, 1" Iron Pipe & GLO B.C.

ADDITIONAL INFORMATION ON THE LOCATION

State Plane Coordinates			
Northing	482613.92	Easting	855864.74
Latitude 32°19'17.627"		Longitude 103°10'52.888"	
Zone	North American Datum	Combined Grid Factor	Coordinate File
East	1927	0.9999012	Penrose.cr5
Drawing File		Field Book	
FDD 1-7-1		1-12-80	

DISTRICT I
P. O. Box 1880, Hobbs, NM 88240

DISTRICT II
P. O. Drawer DD, Artesia, NM 88210

DISTRICT III
1000 Rio Brazos Rd., Aztec, NM 87410

DISTRICT IV
P. O. Box 2088, Santa Fe, NM 87504-2088

State of New Mexico
Energy, Minerals and Natural Resources Department

Form C-102
Revised February 10, 1994

Instructions on back

OIL CONSERVATION DIVISION

PO Box 2088
Santa Fe, NM 87504-2088

Submit to Appropriate District Office

State Lease-4 copies
Fee Lease-3 copies

☐ AMENDED REPORT

WELL LOCATION AND ACREAGE DEDICATION PLAT

¹ API Number		² Pool Code		³ Pool Name Teague; Drinkard-Abo, No.					
⁴ Property Code		⁵ Property Name F. B. Davis						⁶ Well Number 7	
⁷ DGRID No. 22351		⁸ Operator Name TEXACO EXPLORATION & PRODUCTION, INC.						⁹ Elevation 3324'	
¹⁰ Surface Location									
UL or lot no. G	Section 8	Township 23-S	Range 37-E	Lot Idn	Feet from the 1650'	North/South line North	Feet from the 1650'	East/West line East	⁷ County Lea
¹¹ Bottom Hole Location If Different From Surface									
UL or lot no.	Section	Township	Range	Lot Idn	Feet from the	North/South line	Feet from the	East/West line	⁷ County
¹² Dedicated Acres 160		¹³ Joint or Infill		¹⁴ Consolidation Code		¹⁵ Order No.			

NO ALLOWABLE WILL BE ASSIGNED TO THIS COMPLETION UNTIL ALL INTERESTS HAVE BEEN CONSOLIDATED
OR A NON-STANDARD UNIT HAS BEEN APPROVED BY THE DIVISION.

	¹⁶ OPERATOR CERTIFICATION I hereby certify that the information contained herein is true and complete to the best of my knowledge and belief.
	Signature
	Printed Name A. Phil Ryan
	Position Coordinator Commissioner
	Company Texaco Expl. & Prod. Inc.
	Date February 28, 2000
	¹⁷ SURVEYOR CERTIFICATION I hereby certify that the well location shown on this plat was plotted from field notes of actual surveys made by me or under my supervision, and that the same is true and correct to the best of my knowledge and belief.
	Date Surveyed February 24, 2000
	Signature & Seal of Professional Surveyor
	Certificate No. 725# John S. Piper

0 330 660 990 1320 1650 1980 2310 2640 2000 1500 1000 500 0

○ = Staked Location ● = Producing Well = Injection Well ∞ = Water Supply Well ⊕ = Plugged & Abandon Well
⊙ = Found Section Corner, 2 or 3" Iron Pipe & GLO B.C. ○ = Found 1/4 Section Corner, 1" Iron Pipe & GLO B.C.

ADDITIONAL INFORMATION ON THE LOCATION

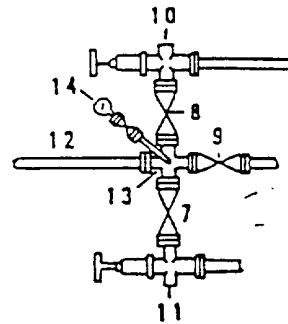
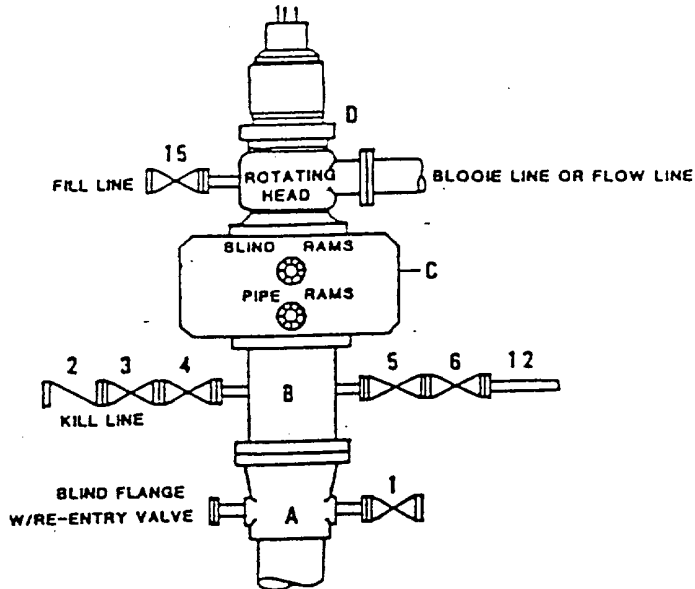
State Plane Coordinates			
Northing 482613.92		Easting 855864.74	
Latitude 32°19'17.627"		Longitude 103°10'52.888"	
Zone	North American Datum	Combined Grid Factor	Coordinate File
East	1927	0.9999012	Penrose.cr5
Drawing File		Field Book	
FRDavis7.dwn		Lea 18. Pa. 60	

✓

to
Received
Harris
12/11/2008

**DRILLING CONTROL
CONDITION II-B 3000 WP
FOR AIR DRILLING OR
WHERE NITROGEN OR AIR BLOWS ARE EXPECTED**

H₂S TRIM REQUIRED
YES _____ NO X



**DRILLING CONTROL
MATERIAL LIST - CONDITION II - B**

- | | |
|------------|---|
| A | Texaco Wellhead |
| B | 3000# W.P. drilling spool with a 2" minimum flanged outlet for kill line and 3" minimum flanged outlet for choke line. |
| C | 3000# W.P. Dual ram type preventer, hydraulic operated with 1" steel, 3000# W.P. control lines (where sub-structure height is adequate, 2 - 3000# W.P. single ram type preventers may be utilized). |
| D | Rotating Head with fill up outlet and extended Bloode Line. |
| 1,3,4,7,8, | 2" minimum 3000# W.P. flanged full opening steel gate valve, or Halliburton Lo Torc Plug valve. |
| 2 | 2" minimum 3000# W.P. back pressure valve. |
| 5,6,9 | 3" minimum 3000# W.P. flanged full opening steel gate valve, or Halliburton Lo Torc Plug valve. |
| 12 | 3" minimum schedule 80, Grade "B", seamless line pipe. |
| 13 | 2" minimum x 3" minimum 3000# W.P. flanged cross. |
| 10,11 | 2" minimum 3000# W.P. adjustable choke bodies. |
| 14 | Cameron Mud Gauge or equivalent (location optional in choke line). |
| 15 | 2" minimum 3000# W.P. flanged or threaded full opening steel gate valve, or Halliburton Lo Torc Plug valve. |



TEXACO, INC.
MIDLAND DIVISION
MIDLAND, TEXAS



SCALE	DATE	EST. NO.	DRG. NO.
DRAWN BY			
CHECKED BY			
APPROVED BY			

EXHIBIT C

ABOVE DATE DOES NOT
INDICATE WHEN
CONFIDENTIAL LOGS
WILL BE RELEASED

ELF

5/16/00
5/3/00

Received
Hobbs
000

1122232425262728