

UNITED
DEPARTMENT OF
BUREAU OF LAND MANAGEMENT

SUNDRY NOTICES AND

Do not use this form for proposals to drill or
Use "APPLICATION FOR F

SUBMIT IN TRIPLICATE

1. Type of Well

☒ Oil Well ☐ Gas Well ☐ Other

2. Name of Operator

Arch Petroleum Inc.

3. Address and Telephone No.

P. O. Box 10340, Midland, TX 79702-7340 (915)685-8100

4. Location of Well (Footage, Sec., T., R., M., or Survey Description)

2305' FNL & 1280' FWL, SEction 27, T23S, R37E

FORM APPROVED
Budget Bureau No. 1004-0135
Expires: March 31, 1993

5. Lease Designation and Serial No.
LC-030187

6. If Indian, Allottee or Tribe Name

7. If Unit or CA, Agreement Designation

8. Well Name and No.

C. E. Lamunyon #71Y

9. API Well No.

10. Field and Pool, or Exploratory Area
Teague Simpson

11. County or Parish, State

Lea County

12. CHECK APPROPRIATE BOX(s) TO INDICATE NATURE OF NOTICE, REPORT, OR OTHER DATA

TYPE OF SUBMISSION

- ☒ Notice of Intent
☐ Subsequent Report
☐ Final Abandonment Notice

TYPE OF ACTION

- ☐ Abandonment
☐ Recompletion
☐ Plugging Back
☐ Casing Repair
☐ Altering Casing
☒ Other Drill replacement well
☐ Change of Plans
☐ New Construction
☐ Non-Routine Fracturing
☐ Water Shut-Off
☐ Conversion to Injection
☐ Dispose Water

(Note: Report results of multiple completion on Well Completion or Recompletion Report and Log form.)

13. Describe Proposed or Completed Operations (Clearly state all pertinent details, and give pertinent dates, including estimated date of starting any proposed work. If well is directionally drilled, give subsurface locations and measured and true vertical depths for all markers and zones pertinent to this work.)

The above captioned well is to be drilled as a replacement well for the C. E. Lamunyon #71 which was lost due to mechanical failure. We will not incorporate any more surface location than what has been previously ARCH cleared. In order to prevent the mechanical problems from reoccurring in the replacement well, the tubular/hole sizes have been adjusted as follows:

1. Surface casing will be 13-3/8" 48# H-40 ST&C set in 17-1/2" hole drilled to 1050'. Casing is to be cemented to surface.
2. Intermediate casing will be changed to 9-5/8" 43.5# J-55 LT&C set in 12-1/4" hole drilled to 3000'. Casing is to be cemented to surface.
3. Production casing will be 5-1/2" 17# J-55 & N-80 LT&C set in 8-1/2" hole drilled to 9800'. Casing will be cemented to $\pm 2000'$ using 2 stage tools @ $\pm 7000'$ & $\pm 4000'$.

NOTE: If chronic lost returns occur in the Devonian formation, a 7" contingency string will be set and cement $\pm 7500'$. We will then drill a 6-1/8" hole to total depth of $\pm 9800'$ where we will set & cement a 5" 18# J-55 FL4S liner.

14. I hereby certify that the foregoing is true and correct

Signed Cathy Lombard

Title Operation Tech

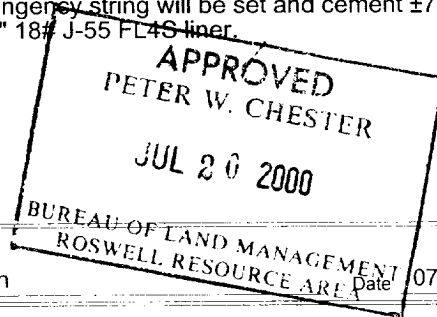
(This space for Federal or State office use)

Approved by

Conditions of approval, if any:

Title

Date



Date 07/18/00

II GWW

N

RECEIVED
JUL 20 2000
PLM
COMM

2000 JUL 20
PLM
COMM

DISTRICT I
P.O. Box 1980, Hobbs, NM 88241-1980

State of New Mexico
Energy, Minerals and Natural Resources Department

Revised February 10, 1994
Submit to Appropriate District Office
State Lease - 4 Copies
Fee Lease - 3 Copies

DISTRICT II
P.O. Drawer DD, Artesia, NM 88211-0719

DISTRICT III
1000 Rio Brazos Rd., Artec, NM 87410

DISTRICT IV
P.O. BOX 2088, SANTA FE, N.M. 87504-2088

OIL CONSERVATION DIVISION
P.O. Box 2088
Santa Fe, New Mexico 87504-2088

☐ AMENDED REPORT

WELL LOCATION AND ACREAGE DEDICATION PLAT

API Number 30-025-35106	Pool Code 58900	Pool Name Teague Simpson
Property Code 14908 14998	Property Name C.E. LaMUNYON	Well Number 71Y
OGRID No. 000962	Operator Name ARCH PETROLEUM, INC.	Elevation 3288

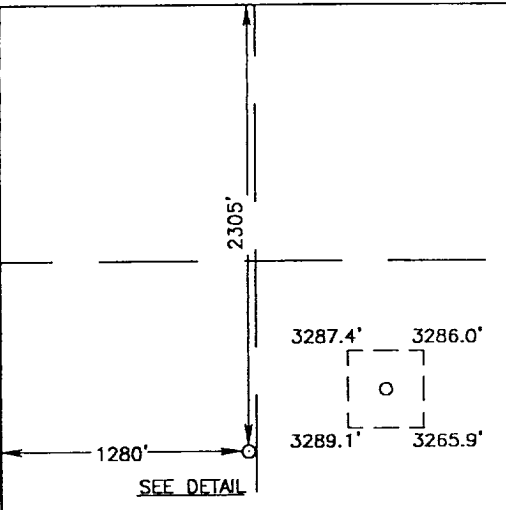
Surface Location

UL or lot No. E	Section 27	Township 23 S	Range 37E	Lot Idn	Feet from the 2305	North/South line NORTH	Feet from the 1280	East/West line WEST	County LEA
--------------------	---------------	------------------	--------------	---------	-----------------------	---------------------------	-----------------------	------------------------	---------------

Bottom Hole Location If Different From Surface

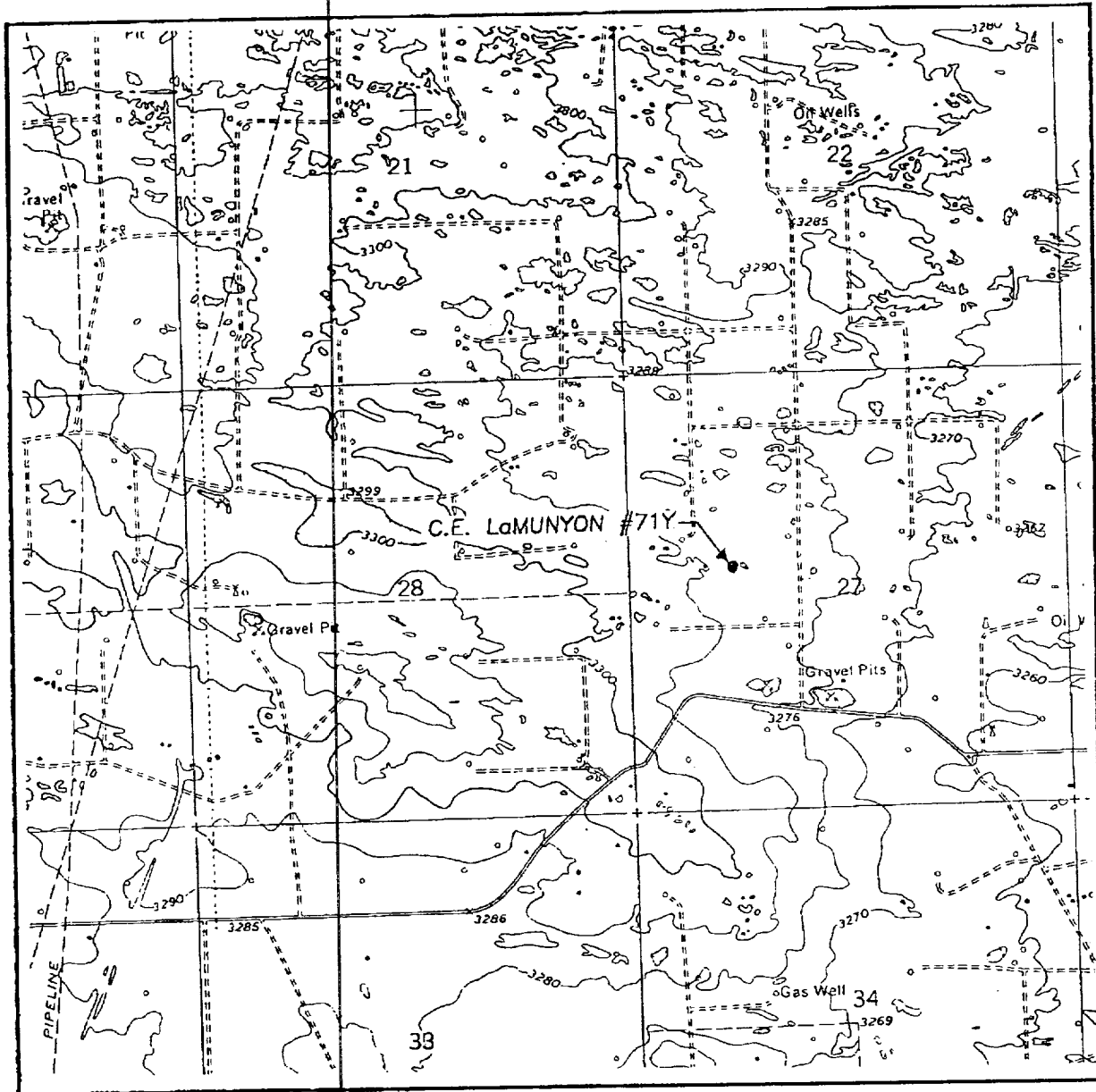
UL or lot No.	Section	Township	Range	Lot Idn	Feet from the	North/South line	Feet from the	East/West line	County
Dedicated Acres 40	Joint or Infill	Consolidation Code	Order No.						

NO ALLOWABLE WILL BE ASSIGNED TO THIS COMPLETION UNTIL ALL INTERESTS HAVE BEEN CONSOLIDATED
OR A NON-STANDARD UNIT HAS BEEN APPROVED BY THE DIVISION

	<p>OPERATOR CERTIFICATION</p> <p>I hereby certify that the information contained herein is true and complete to the best of my knowledge and belief.</p> <p><i>Cathy Tomberlin</i> Signature Cathy Tomberlin Printed Name Operation Tech Title 07/18/00 Date</p> <p>SURVEYOR CERTIFICATION</p> <p>I hereby certify that the well location shown on this plat was plotted from field notes of actual surveys made by me or under my supervision and that the same is true and correct to the best of my belief.</p> <p>JULY 17, 2000 Date Surveyed LMP Signature & Seal of Professional Surveyor <i>Ronald J. Eidson</i> 7/18/00 60-11-0496</p> <p>Certificate No. RONALD J. EIDSON 3239 GARY EIDSON 12641 MACON McDONALD 12185</p>
---	--

RECEIVED
JUL 20 2000
DLN
POSTAL PL

LOCATION VERIFICATION MAP



SCALE: 1" = 2000'

CONTOUR INTERVAL:
RATTLESNAKE CANYON, N.M. - 10'

SEC. 27 TWP. 23-S RGE. 37-E

SURVEY N.M.P.M.

COUNTY LEA

DESCRIPTION 2305' FNL & 280' FWL

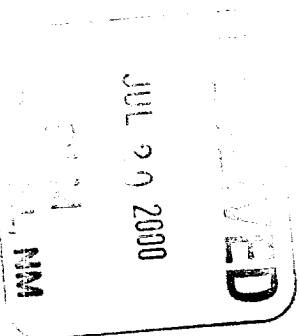
ELEVATION 3288

OPERATOR ARCH PETROLEUM, INC.

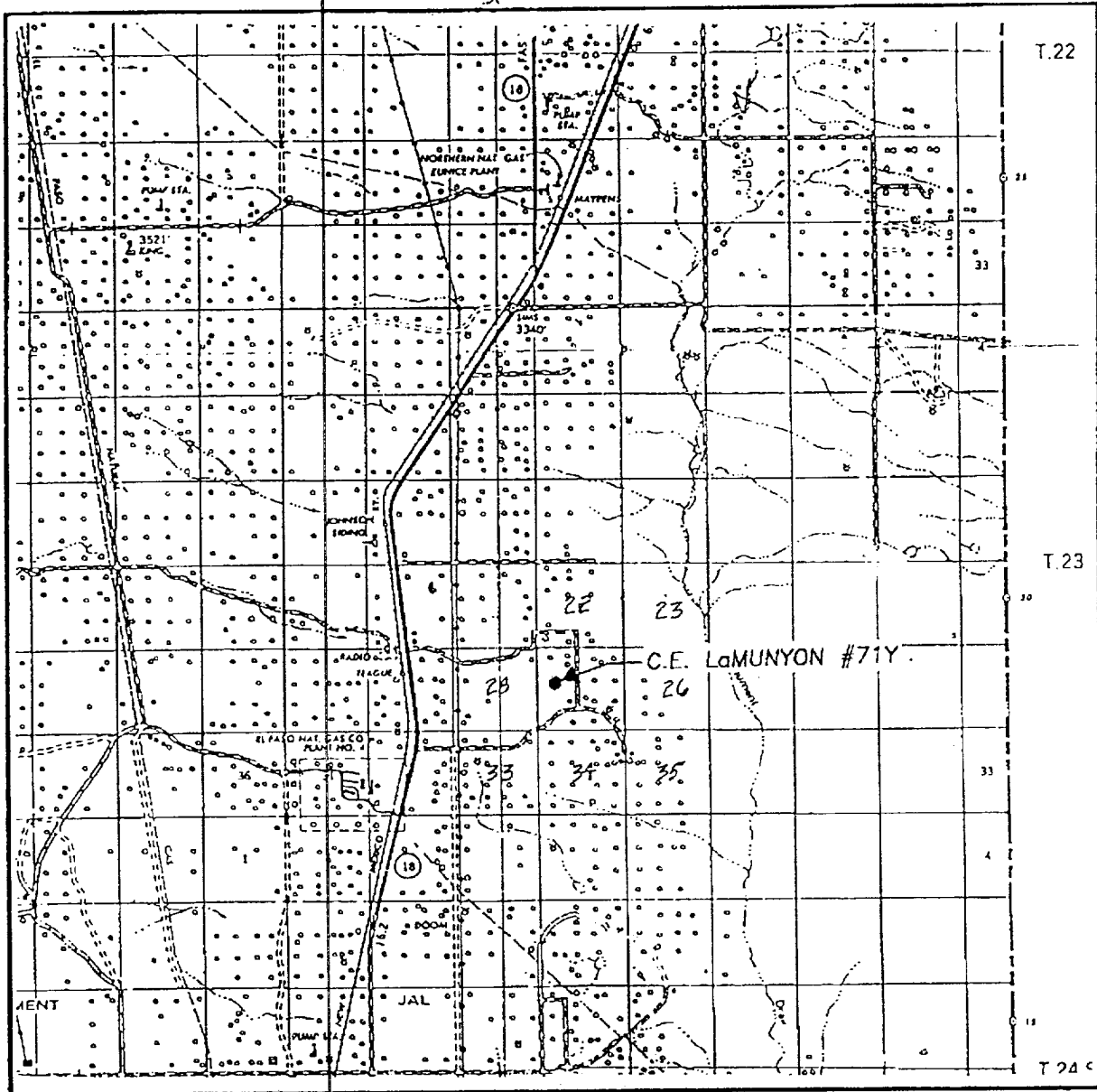
LEASE C.E. LaMUNYON

U.S.G.S. TOPOGRAPHIC MAP
RATTLESNAKE CANYON, N.M.

JOHN WEST SURVEYING
HOBBS, NEW MEXICO
(505) 393-3117



VICINITY MAP



SEC. 27 TWP. 23-S RGE. 37-E
 SURVEY N.M.P.M.
 COUNTY LEA
 DESCRIPTION 2305' FNL & 1280' FWL
 ELEVATION 3288
 OPERATOR ARCH PETROLEUM, INC.
 LEASE C.E. LaMUNYON

JOHN WEST SURVEYING
 HOBBS, NEW MEXICO
 (505) 393-3117

RECEIVED

JUL 20 2000

RLM
OWELL, NM

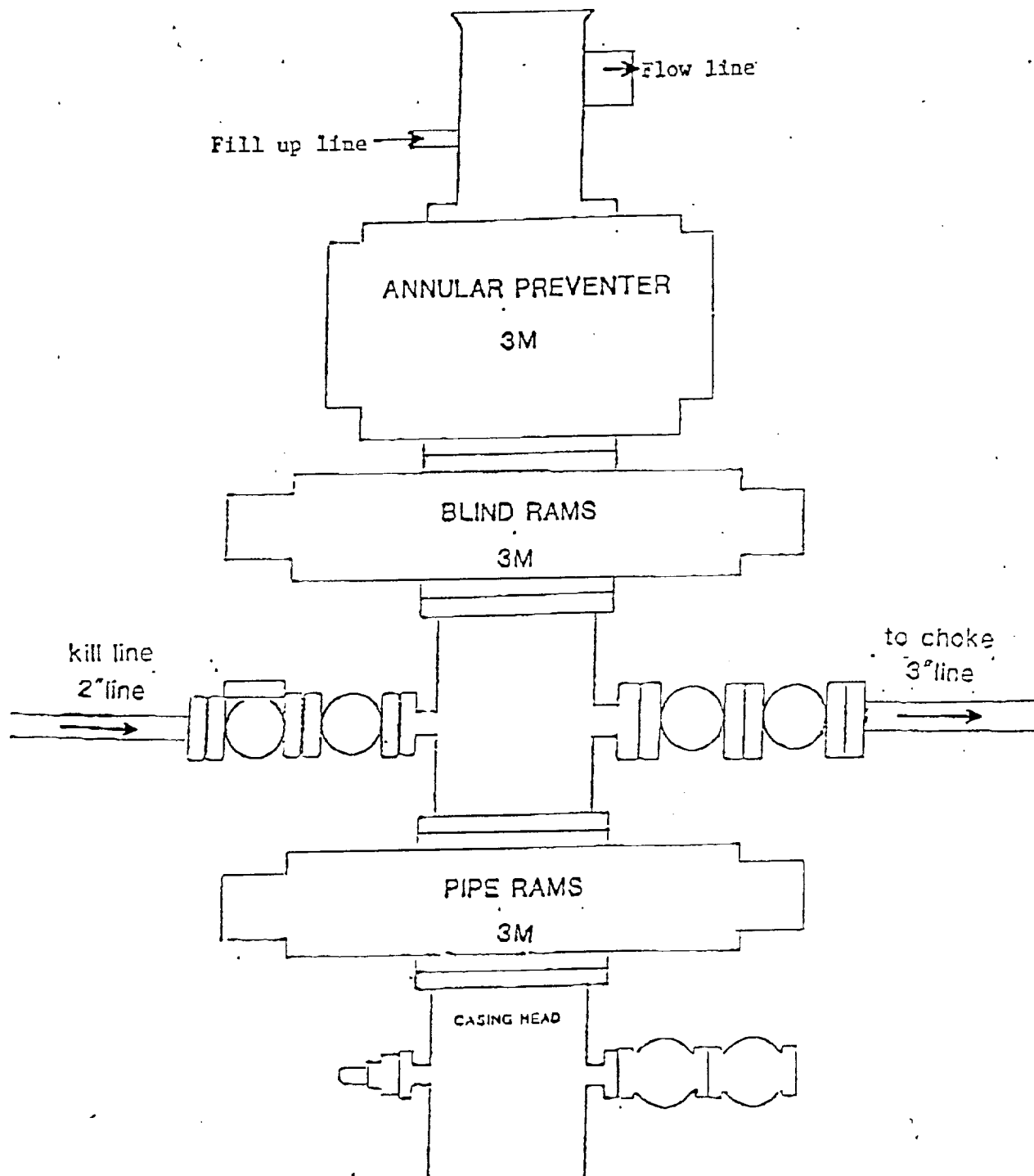


EXHIBIT "E"
SKETCH OF B.O.P. TO BE USED ON

ARCH PETROLEUM, INC.
C.E. LamUNYON # 71Y
UNIT "E" SECTION 27
T23S-R37E LEA CO. NM

RECEIVED
JUL 20 2000
BLM
WELLINGTON

Bureau of Land Management
Received

BUREAU OF LAND MANAGEMENT

641

APPLICATION FOR PERMIT TO DRILL OR DEEPEN

1. TYPE OF WORK

DRILL ☒DEEPEN ☐OIL ☒GAS ☐OTHER ☐SINGLE ☒MULTIPLE ☐

2. NAME OF OPERATOR

ARCH PETROLEUM, INC. (RICHARD WRIGHT 915-685-8140)

3. ADDRESS AND TELEPHONE NO.

P.O. BOX 10340 MIDLAND, TEXAS 79702-7340 (915-685-8100)

4. LOCATION OF WELL (Report location clearly and in accordance with any State requirements.)

2310' FNL & 1310' FWL SEC. 27 T23S-R37E LEA CO. NM.

At proposed prod. zone SAME

14. DISTANCE IN MILES AND DIRECTION FROM NEAREST TOWN OR POST OFFICE*

Approximately 10 miles Southeast of Eunice New Mexico

15. DISTANCE FROM PROPOSED*

LOCATION TO NEAREST
PROPERTY OR LEASE LINE, FT.
(Also to nearest drig. unit line, if any) 1310'

18. DISTANCE FROM PROPOSED LOCATION*

TO NEAREST WELL, DRILLING, COMPLETED,
OR APPLIED FOR, ON THIS LEASE, FT. 200'

16. NO. OF ACRES IN LEASE

1520

19. PROPOSED DEPTH

9800'

17. NO. OF ACRES ASSIGNED
TO THIS WELL

40

20. ROTARY OR CABLE TOOLS

ROTARY

21. ELEVATIONS (Show whether DF, RT, GR, etc.)

3288' GR.

22. APPROX. DATE WORK WILL START*

WHEN APPROVED

PROPOSED CASING AND CEMENTING PROGRAM

SIZE OF HOLE	GRADE SIZE OF CASING	WEIGHT PER FOOT	SETTING DEPTH	QUANTITY OF CEMENT
25"	Conductor	NA	40'	Cement to surface with Redi-mix.
17 1/2"	H-40 13 3/8"	48	500'	600 Sx. Circulate to surface.
11"	J-55 8 5/8"	32 & 24	3000'	1200 Sx. Circulate to surface.
7 7/8"	N-80 5 1/2"	17	9800'	1150 Sx. Top cement 2500'±

1. Drill 25" hole to 40'. Set 40' of 20" conductor pipe and cement to surface with Redi-mix.
2. Drill 17 1/2" hole to 500'. Run and set 500' of 13 3/8" H-40 48# ST&C casing. Cement with 600 Sx of Class "C" cement + additives, circulate cement to surface.
3. Drill 11" hole to 3000'. Run and set 3000' of 8 5/8" J-55 32 & 24 # ST&C casing. Cement with 1200 Sx. of Class "C" cement + additives, circulate cement to surface. 800' of 32# 2200' of 24#.
4. Drill 7 7/8" hole to 9800'. Run and set 9800' of 5 1/2" casing as follows: 2800' of 17# N-80 LT&C, 6000' of 17# J-55 LT&C, 1000' of 17# N-80 LT&C casing. Cement in two stages with DV tool at 5200'±. Cement with 1150 Sx. of Class "H" cement + additives, estimate top of cement 2500' from surface.

OPER. OGRID NO. 962

PROPERTY NO. 14908

POOL CODE 58900

EFF. DATE 6-19-00

API NO. 30-025-35058

IN ABOVE SPACE DESCRIBE PROPOSED PROGRAM: If proposal is to deepen, give da
deepen directionally, give pertinent data on subsurface locations and measured and true verti

24.

SIGNED

TITLE Agent

DATE 05/04/00

(This space for Federal or State office use)

PERMIT NO.

APPROVAL DATE

Application approval does not warrant or certify that the applicant holds legal or equitable title to those rights in the subject lease which would entitle the applicant to conduct operations thereon.
CONDITIONS OF APPROVAL, IF ANY:

APPROVED BY

/S/LARRY D. BRAY

TITLE

Assistant Field Manager,
Lands And Minerals

DATE

JUN 09 2000

APPROVED FOR 1 YEAR

*See Instructions On Reverse Side