

DISTRICT I
P.O. Box 1980, Hobbs, NM 88241-1980
DISTRICT II
P.O. Box Drawer DD, Artesia, NM 88211-0719
DISTRICT III
1000 Rio Brazos Rd., Aztec, NM 87410
DISTRICT IV
P.O. Box 2088, Santa Fe, NM 87504-2088

State of New Mexico
Energy, Minerals and Natural Resources Department

OIL CONSERVATION DIVISION

P.O. Box 2088
Santa Fe, New Mexico 87504-2088

Form C-101
Revised February 10, 1994
Instructions on back
Submit to Appropriate District Office
State Lease - 6 Copies
Fee Lease - 5 Copies

☐ AMENDED REPORT

APPLICATION FOR PERMIT TO DRILL, RE-ENTER, DEEPEN, PLUGBACK, OR ADD A ZONE

¹ Operator Name and Address TEXACO EXPLORATION & PRODUCTION INC. P.O. Box 3109, Midland Texas 79702		² OGRID Number 022351
		³ API Number 30-025-35126
⁴ Property Code 13195	⁵ Property Name F B DAVIS	⁶ Well No. X9

⁷ Surface Location

UI or lot no.	Section	Township	Range	Lot.Idn	Feet From The	North/South Line	Feet From The	East/West Line	County
F	8	23-S	37-E		1650	NORTH	2310	WEST	LEA

⁸ Proposed Bottom Hole Location If Different From Surface

UI or lot no.	Section	Township	Range	Lot.Idn	Feet From The	North/South Line	Feet From The	East/West Line	County
⁹ Proposed Pool 1 Teague, L Paddock-Blinebry, No (ASSOC)					¹⁰ Proposed Pool 2 Teague, Tubb/Drinkard-Abo				

¹¹ Work Type Code N	¹² Well Type Code O	¹³ Rotary or C.T. ROTARY	¹⁴ Lease Type Code P	¹⁵ Ground Level Elevation 3329'
¹⁶ Multiple No	¹⁷ Proposed Depth 8000'	¹⁸ Formation L Paddock-Blinebry, No	¹⁹ Contractor	²⁰ Spud Date 8/30/00

²¹ Proposed Casing and Cement Program

SIZE OF HOLE	SIZE OF CASING	WEIGHT PER FOOT	SETTING DEPTH	SACKS OF CEMENT	EST. TOP
12 1/4"	8 5/8"	24#	1150'	800	CIRCULATE
7 7/8"	5 1/2"	17#	8000'	1580	CIRCULATE

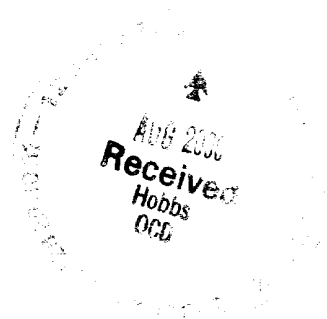
²² Describe the proposed program. If this application is to DEEPEN or PLUG BACK give the data on the present productive zone and proposed new productive zone.
Describe the blowout prevention program, if any. Use additional sheets if necessary.

CEMENTING PROGRAM:

SURFACE CASING: 100 SACKS CLASS C w/2% GEL, 2% CaCl₂ (14.2 PPG, 1.50 CF/S, 7.45 GW/S). F/B 700 SACKS CLASS C w/2% GEL (14.8 PPG, 1.34 CF/S, 6.31 GW/S).
PRODUCTION CASING: 460 SACKS 50/50 POZ CLASS H w/2% GEL, 5% SALT, 1/4# FC (14.2 PPG, 1.35 CF/S, 6.30 GW/S). 860 SACKS 35/65 POZ CLASS H w/6% GEL, 5% SALT, 1/4# FC (12.8 PPG, 1.94 CF/S, 10.46 GW/S). F/B 260 SACKS 50/50 POZ CLASS H w/2% GEL, 5% SALT, 1/4# FC (14.2 PPG, 1.35 CF/S, 6.30 GW/S).

Permit Expires 1 Year From Approval
Date Unless Drilling Underway

²³ I hereby certify that the rules and regulations of the Oil Conservation Division have been complied with and that the information given above is true and complete to the best of my knowledge and belief.		OIL CONSERVATION DIVISION	
Signature <i>A. Phil Ryan</i>			
Printed Name <i>A. Phil Ryan</i>		Approved By:	
Title <i>Commission Coordinator</i>		Title:	
Date 8/9/00	Telephone 688-4606	Approval Date: <i>14 2000</i>	Expiration Date:
		Conditions of Approval: <i>14 2000</i> Attached <input type="checkbox"/>	



DISTRICT I
P. O. Box 1980, Hobbs, NM 88240

DISTRICT II
P. O. Drawer DD, Artesia, NM 88210

DISTRICT III
1000 Rio Brazos Rd., Aztec, NM 87410

DISTRICT IV
P. O. Box 2088, Santa Fe, NM 87504-2088

State of New Mexico
Energy, Minerals and Natural Resources Department

Form C-102
Revised February 10, 1994

Instructions on back

OIL CONSERVATION DIVISION

PO Box 2088
Santa Fe, NM 87504-2088

Submit to Appropriate District Office

State Lease-4 copies
Fee Lease-3 copies

WELL LOCATION AND ACREAGE DEDICATION PLAT

☐ AMENDED REPORT

¹ API Number 30-025-35126		² Pool Code 96314		³ Pool Name Teague, L. Paddock-Blinebry, No. Teague, Glorieta-Upper Paddock, SW; Teague, Drinkard-Abo, No.; Teague, Devonian, NW	
⁴ Property Code 13195		⁵ Property Name F. B. Davis		⁶ Well Number 189	
⁷ GRID No. 22351		⁸ Operator Name TEXACO EXPLORATION & PRODUCTION, INC.		⁹ Elevation 3329'	

¹⁰ Surface Location									
UL or lot no. F	Section 8	Township 23-S	Range 37-E	Lot Idn	Feet from the 1650'	North/South line North	Feet from the 2310'	East/West line West	⁷ County Lea

¹¹ Bottom Hole Location If Different From Surface									
UL or lot no.	Section	Township	Range	Lot Idn	Feet from the	North/South line	Feet from the	East/West line	⁷ County
¹² Dedicated Acres 40		¹³ Joint or Infill		¹⁴ Consolidation Code		¹⁵ Order No.			

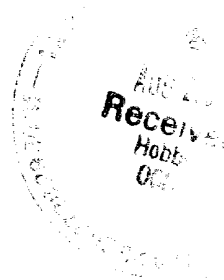
NO ALLOWABLE WILL BE ASSIGNED TO THIS COMPLETION UNTIL ALL INTERESTS HAVE BEEN CONSOLIDATED
OR A NON-STANDARD UNIT HAS BEEN APPROVED BY THE DIVISION.

	<p>¹⁶OPERATOR CERTIFICATION</p> <p>I hereby certify that the information contained herein is true and complete to the best of my knowledge and belief.</p> <p>Signature <i>A. Phil Ryan</i></p> <p>Printed Name A. Phil Ryan</p> <p>Position Coordinator Commissioner</p> <p>Company Texaco Expl. & Prod. Inc.</p> <p>Date August 1, 2000</p> <p>¹⁷SURVEYOR CERTIFICATION</p> <p>I hereby certify that the well location shown on this plat was plotted from field notes of actual surveys made by me or under my supervision, and that the same is true and correct to the best of my knowledge and belief.</p> <p>Date Surveyed July 31, 2000</p> <p>Signature & Seal of Professional Surveyor <i>John S. Piper</i></p> <p>Certificate No. 7254 John S. Piper</p> <p>Sheet</p>
--	--

○ = Staked Location ● = Producing Well ↗ = Injection Well ◇ = Water Supply Well ◆ = Plugged & Abandon Well
⊙ = Found Section Corner, 2 or 3" Iron Pipe & GLO B.C. ○ = Found 1/4 Section Corner, 1" Iron Pipe & GLO B.C.

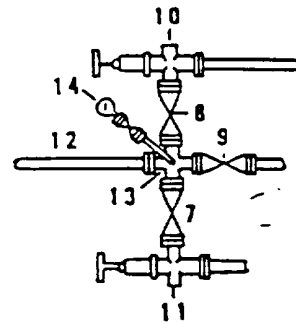
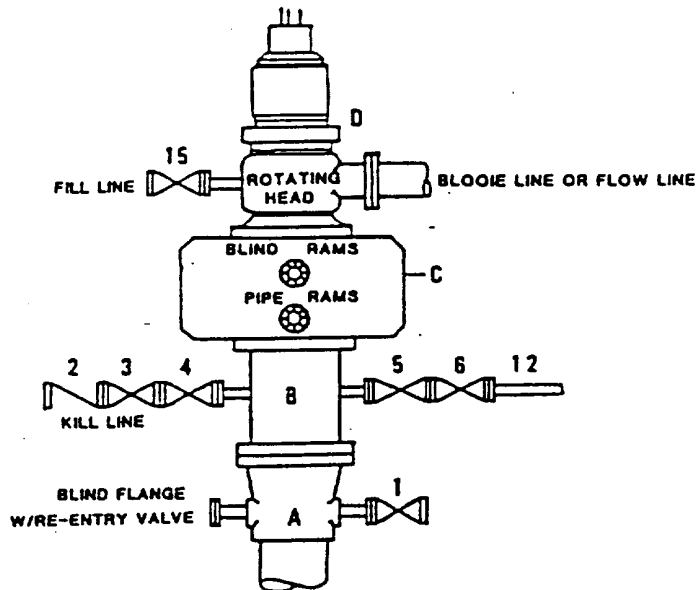
ADDITIONAL INFORMATION ON THE LOCATION

State Plane Coordinates			
Northing 482596.86 (1983=482656.11)		Easting 854567.59 (1983=895753.24)	
Latitude 32°19'17.596" (1983=32°19'18.041")		Longitude 103°11'08.004" (1983=103°11'09.680")	
Zone North American Datum	Combined Grid Factor	Coordinate File	
East 1927	0.9999012	Penrose.cr5	
Drawing File		Field Book	
FBDavis9.dwg		Lea 18, Pg. 74	



**DRILLING CONTROL
CONDITION II-B 3000 WP
FOR AIR DRILLING OR
WHERE NITROGEN OR AIR BLOWS ARE EXPECTED**

H₂S TRIM REQUIRED
YES _____ NO X



DRILLING CONTROL

MATERIAL LIST - CONDITION II - B

- | | |
|----------------|--|
| A | Texaco Wellhead |
| B | 3000# W.P. drilling spool with a 2" minimum flanged outlet for kill line and 3" minimum flanged outlet for choke line. |
| C | 3000# W.P. Dual ram type preventer, hydraulic operated with 1" steel, 3000# W.P. control lines (where substructure height is adequate, 2 - 3000# W.P. single ram type preventers may be utilized). |
| D | Rotating Head with fill up outlet and extended Bloodie Line. |
| 1,3,4,
7,8, | 2" minimum 3000# W.P. flanged full opening steel gate valve, or Halliburton Lo Torc Plug valve. |
| 2 | 2" minimum 3000# W.P. back pressure valve. |
| 5,6,9 | 3" minimum 3000# W.P. flanged full opening steel gate valve, or Halliburton Lo Torc Plug valve. |
| 12 | 3" minimum schedule 80, Grade "B", seamless line pipe. |
| 13 | 2" minimum x 3" minimum 3000# W.P. flanged cross. |
| 10,11 | 2" minimum 3000# W.P. adjustable choke bodies. |
| 14 | Cameron Mud Gauge or equivalent (location optional in choke line). |
| 15 | 2" minimum 3000# W.P. flanged or threaded full opening steel gate valve, or Halliburton Lo Torc Plug valve. |



TEXACO, INC.
MIDLAND DIVISION
MIDLAND, TEXAS



SCALE	DATE	EST. NO.	DRG. NO.
DRAWN BY			
CHECKED BY			
APPROVED BY			

EXHIBIT C

ELF
5/10/01
ABOVE DATE DOES NOT
INDICATE WHEN
CONFIDENTIAL LOGS
WILL BE RELEASED

