

District I
P.O. Box 1980, Hobbs, NM 88241-1980
District II
811 South First, Artesia, NM 88210
District III
1000 Rio Brazos Rd., Aztec, NM 87410
District IV
2040 South Pacheco, Santa Fe, NM 87505

State of New Mexico
Energy, Minerals & Natural Resources Department

OIL CONSERVATION DIVISION
2040 South Pacheco
Santa Fe, NM 87505

Form C-101
Revised October 18, 1994
Instructions on back
Submit to Appropriate District Office
State Lease - 6 Copies
Fee Lease - 5 Copies

☐ AMENDED REPORT

APPLICATION FOR PERMIT TO DRILL, RE-ENTER, DEEPEN, PLUGBACK, OR ADD A ZONE

1 Operator Name and Address Apache Corporation attn: Dennis Bickford; 3rd floor 2000 Post Oak Blvd. Ste. 100 Houston, Texas 77056-4400		2 OGRID Number 873
4 Property Code 26484		3 API Number 30-025-35366
5 Property Name State LMT		6 Well No. 11

7 Surface Location

UL or lot no.	Section	Township	Range	Lot Idn	Feet from the	North/South Line	Feet from the	East/West Line	County
B	36	23-S	36-E		1150	North	1750	East	Lea

8 Proposed Bottom Hole Location If Different From Surface

UL or lot no.	Section	Township	Range	Lot Idn	Feet from the	North/South Line	Feet from the	East/West Line	County
9 Proposed Pool 1 JALMAT;TAN-YATES-7 RVRS (PRO GAS) (79240)									
10 Proposed Pool 2									

11 Work Type Code N	12 Well Type Code G	13 Cable/Rotary R	14 Lease Type Code S	15 Ground Level Elevation 3321' KB
16 Multiple	17 Proposed Depth 3500	18 formation Jalmat (Yates/7 Rivers)	19 Contractor ASAP	20 Spud Date

21 Proposed Casing and Cement Program

Hole Size	Casing Size	Casing weight/foot	Setting Depth	Sacks of Cement	Estimated TOC
12 1/4"	8 5/8"	24#	1100'	450 sxs	Circulate to Surf
7 7/8"	5 1/2"	17#	3500'	500 sxs	Circulate to Surf

22 Describe the proposed program. If this application is to DEEPEN or PLUG BACK give the data on the present productive zone and proposed new productive zone. Describe the blowout prevention program, if any. Use additional sheets if necessary.

Propose to drill 12 1/4" hole to 1100' or 50' into Anhydrite Formation, run & set 1100' of 8 5/8" and cement,
Lead: Class "C" + 2% calcium chloride + 0.25 lb/sx cello flake + 0.005% gps FP-6L + 6% bentonite.
Tail: Class "C" + 2% calcium chloride + 0.005 gps FP-6L.
Drill 7 7/8" hole to 3500', run & set 3500' of 5 1/2" casing and cement.
Lead: 35:65 POZ: Class "C" + 5% sodium chloride + 0.25 lb/sx cello flake + 0.005 gps FP-6L + 8% bentonite.
Tail: 50:50 POZ: Class "H" + 5% sodium + .25 lb/sx cello flake + 1% FL-25 + 0.005 gps FP-6L + bentonite.

Blow Out Prevention: See attached copy

23 I hereby certify that the information given above is true and complete to the best of my knowledge and belief.

Signature: <i>Everett Ouzts</i>		OIL CONSERVATION DIVISION	
Printed Name: Everett Ouzts		Approved by: <i>[Signature]</i>	
Title: Engineering Technician		Title: <i>[Signature]</i>	
Date: 01/15/2001		Approval Date: <i>[Signature]</i> Expiration Date: <i>[Signature]</i>	
Phone: 915-631-3733		Conditions on Approval:	

Permit Expires 1 Year From Approval
Date Unless Drilling Underway

[Signature]

DISTRICT I
P.O. Box 1980, Hobbs, NM 88241-1980

DISTRICT II
P.O. Drawer DD, Artesia, NM 88211-0719

DISTRICT III
1000 Rio Brazos Rd., Artesia, NM 87410

DISTRICT IV
P.O. BOX 2088, SANTA FE, N.M. 87504-2088

State of New Mexico
Energy, Minerals and Natural Resources Department

Form C-102
Revised February 10, 1994
Submit to Appropriate District Office
State Lease - 4 Copies
Fee Lease - 3 Copies

OIL CONSERVATION DIVISION

P.O. Box 2088
Santa Fe, New Mexico 87504-2088

☐ AMENDED REPORT

WELL LOCATION AND ACREAGE DEDICATION PLAT

API Number 30-025-35366	Pool Code 79240	Pool Name Jalmat;Tan-Yates-7 Rvrs (Pro Gas)
Property Code 26484	Property Name STATE LMT	Well Number 11
OGRID No. 873	Operator Name APACHE CORPORATION	Elevation 3321

Surface Location

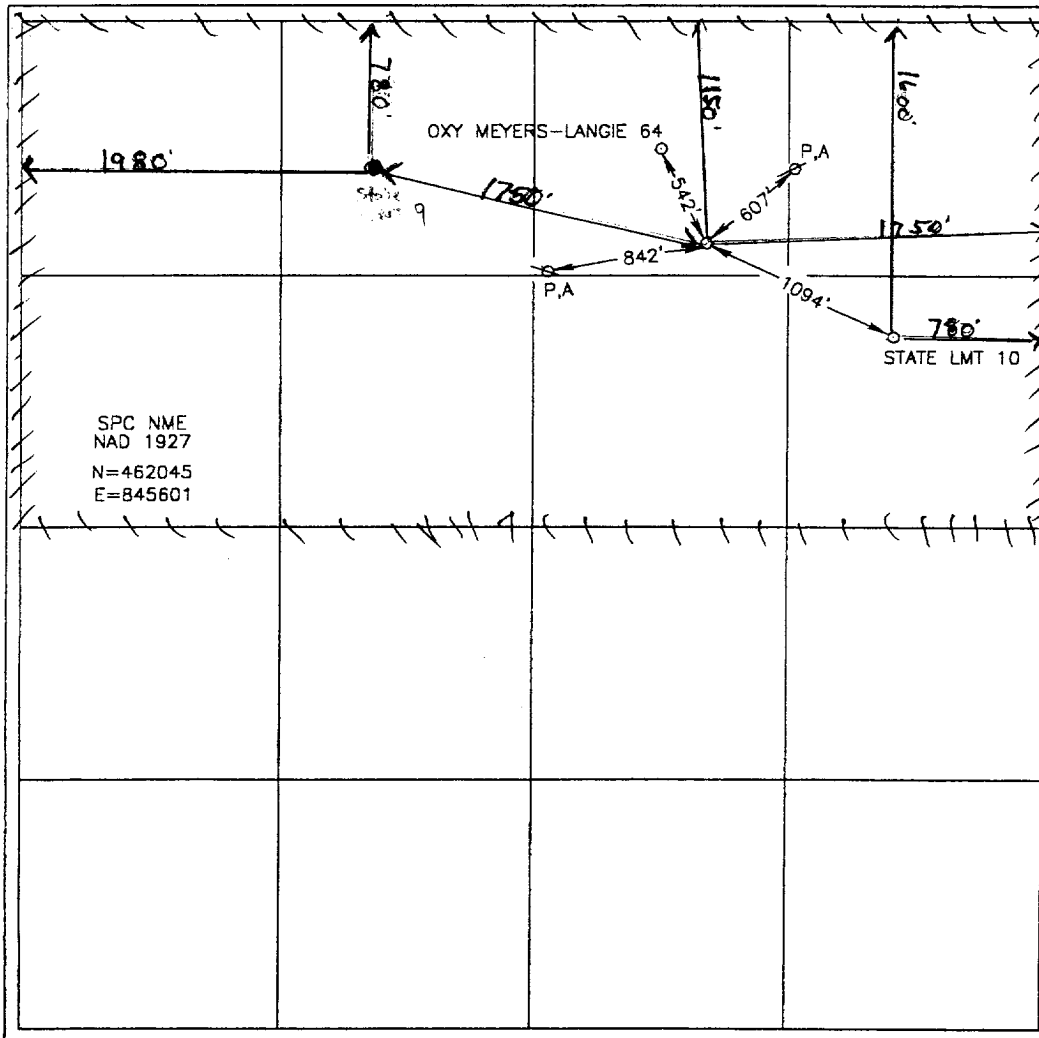
UL or lot No.	Section	Township	Range	Lot Idn	Feet from the	North/South line	Feet from the	East/West line	County
B	36	23-S	36-E		1150	NORTH	1750	EAST	LEA

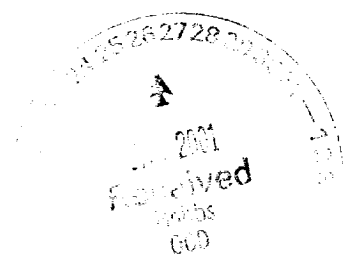
Bottom Hole Location If Different From Surface

UL or lot No.	Section	Township	Range	Lot Idn	Feet from the	North/South line	Feet from the	East/West line	County

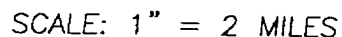
Dedicated Acres 320	Joint or Infill	Consolidation Code	Order No.
------------------------	-----------------	--------------------	-----------

NO ALLOWABLE WILL BE ASSIGNED TO THIS COMPLETION UNTIL ALL INTERESTS HAVE BEEN CONSOLIDATED
OR A NON-STANDARD UNIT HAS BEEN APPROVED BY THE DIVISION

	<p>OPERATOR CERTIFICATION</p> <p>I hereby certify the the information contained herein is true and complete to the best of my knowledge and belief.</p> <p><i>Everett Ouzts</i> Signature Everett Ouzts Printed Name Eng. Tech Title 01/15/01 Date</p> <p>SURVEYOR CERTIFICATION</p> <p>I hereby certify that the well location shown on this plat was plotted from field notes of actual surveys made by me or under my supervision and that the same is true and correct to the best of my belief.</p> <p>DECEMBER 29, 2000 Date Surveyed AWB Signature & Seal of Professional Surveyor</p> <p>00-11-1631</p> <p>Certificate No. RONALD J. EIDSON 3239 GARY EIDSON 12641</p>
---	--



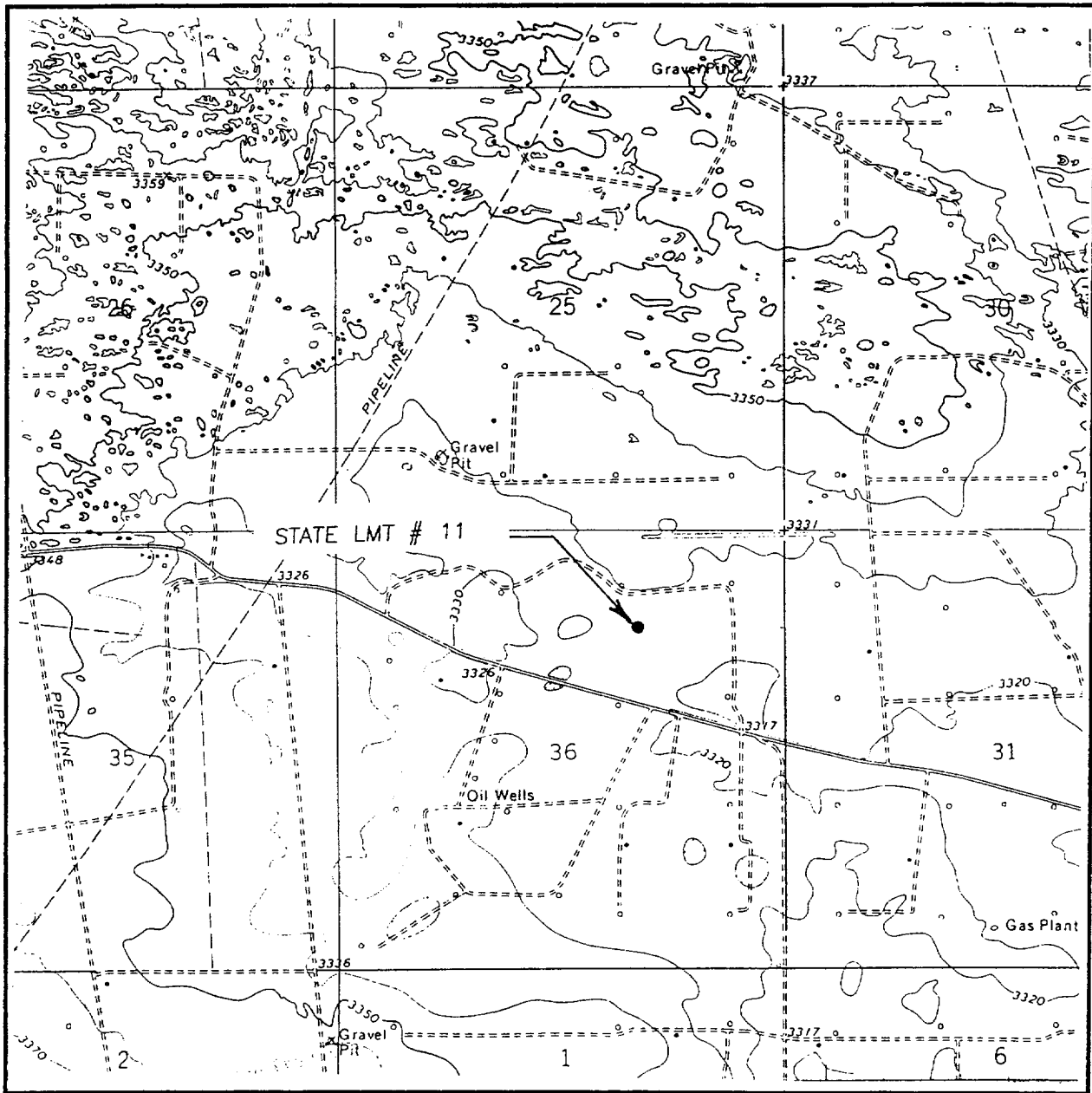
NORTH



LEASE STATE LMT

JOHN WEST SURVEYING
HOBBS, NEW MEXICO
(505) 393-3117

LOCATION VERFICATION MAP



SCALE: 1" = 2000'

CONTOUR INTERVAL: 10'

RATTLESNAKE CANYON

SEC. 36 TWP. 23-S RGE. 36-E

SURVEY N.M.P.M.

COUNTY LEA

DESCRIPTION 1150'FNL & 1750'FEL

ELEVATION 3321

OPERATOR APACHE CORPORATION

LEASE STATE LMT

U.S.G.S. TOPOGRAPHIC MAP

RATTLESNAKE CANYON

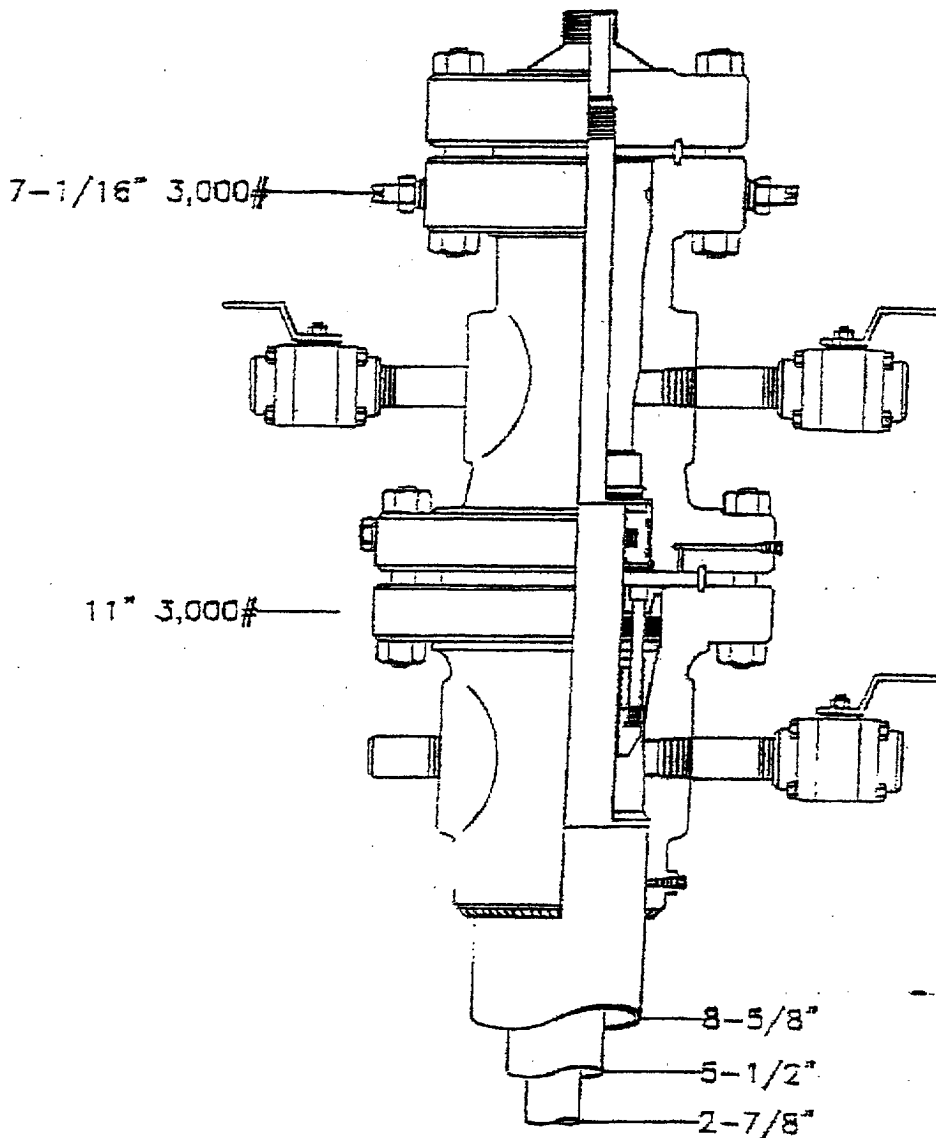
JOHN WEST SURVEYING
HOBBS, NEW MEXICO
(505) 393-3117

Alachne Corporation

State LMT #11

LEA COUNTY, NEW MEXICO

DATE	APPROVED BY	DATE
10/22/2010	10/22/2010	10/22/2010



ELF 7/5/01
ABOVE DATE DOES NOT
INDICATE WHEN
CONFIDENTIAL LOGS
WILL BE RELEASED