

DISTRICT I

P.O. Box 1980, Hobbs, NM 88240

DISTRICT II

P.O. Box Drawer DD, Artesia, NM 88210

DISTRICT III

1000 Rio Brazos Rd., Aztec, NM 87410

CONSERVATION DIVISION

P.O. Box 2088

Santa Fe, New Mexico 87504-2088

WELL API NO.

30-025-35502

5. Indicate Type of Lease

STATE ☐

FEE ☒

6. State Oil / Gas Lease No.

7. Lease Name or Unit Agreement Name

SIMS G. W.

8. Well No.

5

9. Pool Name or Wildcat

TGE TUBB/TGE DRINKARD ABO N.

SUNDY NOTICES AND REPORTS ON WELLS
(DO NOT USE THIS FORM FOR PROPOSALS TO DRILL OR TO DEEPEN OR PLUG BACK TO
DIFFERENT RESERVOIR. USE "APPLICATION FOR PERMI
(FORM C-101) FOR SUCH PROPOSALS.

1. Type of Well: OIL WELL ☒ GAS WELL ☐ OTHER

2. Name of Operator
TEXACO EXPLORATION & PRODUCTION INC.

3. Address of Operator
15 SMITH ROAD, MIDLAND, TX 79705

4. Well Location
Unit Letter B : 990' Feet From The NORTH Line and 2310' Feet From The EAST Line
Section 9 Township 23-S Range 37-E NMPM LEA COUNTY

10. Elevation (Show whether DF, RKB, RT, GR, etc.) 3310'

11. Check Appropriate Box to Indicate Nature of Notice, Report, or Other Data

NOTICE OF INTENTION TO:

PERFORM REMEDIAL WORK ☐ PLUG AND ABANDON ☐

TEMPORARILY ABANDON ☐ CHANGE PLANS ☐

PULL OR ALTER CASING ☐

OTHER: COMPLETION PROCEDURE ☒

SUBSEQUENT REPORT OF:

REMEDIAL WORK ☐

ALTERING CASING ☐

COMMENCE DRILLING OPERATION ☐

PLUG AND ABANDONMENT ☐

CASING TEST AND CEMENT JOB ☐

OTHER: ☐

12. Describe Proposed or Completed Operations (Clearly state all pertinent details, and give pertinent dates, including estimated date of starting any proposed work) SEE RULE 1103.

THE COMPLETION PROCEDURE FOR THE SUBJECT WELL IS ATTACHED FOR APPROVAL. (ATTACHMENT)
TEXACO INTENDS TO DOWNHOLE COMMINGLE THE TUBB AND THE DRINKARD ABO POOLS FOR THE SUBJECT WELL AS PRE-APPROVED
BY DIVISION ORDER NO. R-11363. THIS COMMINGLING WILL NOT REDUCE THE VALUE OF THE TOTAL REMAINING PRODUCTION AND
WILL ALLOW TEXACO TO RECOVER ADDITIONAL RESERVES THAT WOULD NOT HAVE BEEN ECONOMICALLY VIABLE TO CAPTURE
OTHERWISE.

THE ALLOCATION METHOD FOR THE DOWNHOLE COMMINGLE IS AS FOLLOWS AND IS BASED ON PRODUCTION FROM G.W. SIMS #1

WELL					
Teague				54	46
TUBB N. Assoc	OIL - 1,582	GAS - 25,872	WTR - 1,182	53.6% OIL,	46.2% GAS, 54.5% WATER
Teague				46	54
DRINKARD/ABO N	OIL - 1,369	GAS - 30,140	WTR - 986	46.4% OIL,	53.8% GAS, 45.5% WATER
TOTAL	- 2,951	TOTAL - 56,012	TOTAL - 2,168		

THE PERFORATED INTERVALS FOR EACH POOL WILL BE AS FOLLOWS:

TEAGUE TUBB N. ASSOC (POOL CODE - 96315) 6105-6255

TEAGUE DRINKARD ABO N. (POOL CODE - 96313) 6304-7038

OWNERSHIP AND PERCENTAGES BETWEEN THE TUBB AND THE DRINKARD/ABO ARE IDENTICAL FOR THE SPECIFIED WELL AND LEASE.

COPY HAS BEEN SENT TO THE COMMISSIONER OF PUBLIC LANDS FOR THE STATE OF NEW MEXICO

I hereby certify that the information above is true and complete to the best of my knowledge and belief.

SIGNATURE J. Denise Leake TITLE Regulatory Specialist

DATE 2/20/02

Telephone No. 915-687-7375

TYPE OR PRINT NAME J. Denise Leake

(This space for State Use)

APPROVED

CONDITIONS OF APPROVAL, IF ANY:

TITLE

ORIGINAL SIGNED BY
PAUL F. KAUTZ
PETROLEUM ENGINEER

DATE

DeSoto/Nichols 12-93 ver 1.0

MAR 20 2002

G. W. Sims No. 5
Lea County, New Mexico
Tubb / Drinkard / Abo Completion Procedure
February 15, 2002

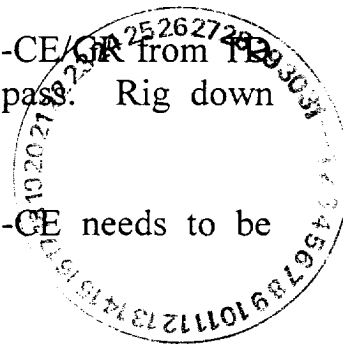
Current Wellbore Configuration:

8 5/8", 24#, K-55 casing, cemented @ 1,205', cement circulated
5 1/2", 17#, K-55 & J-55 casing, cemented @ 7,250'
DV @ 5,000', no returns on the first stage cement job, pumped
400 sacks and did not bump the plug
Second stage pumped 1,500 sacks and circulated 58 sacks to pit
Float Collar @ 7,208'

Drilling Problems:

Water flow of 15 BPH encountered at 1,400', increased to 30 BPH by 1,600'. Increased to 40 BPH by 2,065'. H₂S gas detected at 2,900'. Water flow decreasing to 18 BPH by 5,790'. Unable to obtain open hole logs below 7,160', due to bridge. Did not bump the plug during first stage cement job. While setting the 5-1/2" slips, well started to flow.

1. MIRUSU. Install 3000 psi manual BOP.
2. PU 2-7/8" tubing (work string) and drill out DV, and cement to a depth of 7,200'.
3. Pressure test to 2,500 psi.
4. Circulate hole clean with 2% KCl water. TOOH.
5. Rig up Schlumberger, logging packoff and run USI-CE/GR from 112 to surface'. Maintain 1,000 psi during logging pass. Rig down Schlumberger.
6. Shut down operations and wait on orders. (USI-CE needs to be evaluated prior to proceeding).



G. W. Sims No. 5
Lea County, New Mexico
Tubb / Drinkard / Abo Completion Procedure
February 15, 2002

7. If a cement squeeze is not needed on the 5-1/2" casing, lay down tubing and RDMOSU.
8. Obtain verbal approval from NMOCD for bradenhead squeeze.
9. MIRU DS. Establish pump in rate on the 5-1/2" – 8-5/8" annulus. Pump 200 sx Class C cmt w/ (2% S1 + 0.5% D167 + 0.2% D65). Density: 14.8 ppg, Yield: 1.32 cu ft/sx, Water: 6.32gps, Thickening time: 2 hr: 40 min. Shut down, close the annulus valve. Flush lines to the pit. Close the bleed off, open the annulus valve and pump ½ bbl of water. Shut down. Hold 1,000 psi on the 5-1/2" production casing during the job. Max allowable surface squeeze pressure is to be 2,000 psi. RDMO DS.
10. WOC for 24 hours. Check for flow.
11. Rig up Schlumberger lubricator and pressure test to 2000 psi. TIH w/ CCL and 4" guns and perforate the Abo intervals listed below, using a combination of 4" HEGS and 4" HYPER II guns. Perforate at 2 SPF 90 degree phasing. Intervals shown below are correlated to the Schlumberger: Compensated Neutron / Three Detector – Litho-Density log dated January 25, 2002.

<u>Interval</u>	<u>Feet</u>	<u>Shots</u>
6708-6711'	3'	7
6723-6731'	8'	17
6740-6749'	9'	19
6804-6813'	9'	19
6816-6822'	6'	13
6830-6839'	9'	19
6850-6854'	4'	9
6876-6881'	5'	11
6886-6897'	11'	23
6900-6904'	4'	9
6912-6932'	20'	41
6934-6940'	6'	13



G. W. Sims No. 5
Lea County, New Mexico
Tubb / Drinkard / Abo Completion Procedure
February 15, 2002

6946-6957'	11'	23
6960-6968'	8'	17
6972-6988'	16'	33
6994-7002'	8'	17
7006-7012'	6'	13
7022-7029'	7'	15
7032-7038'	6'	13

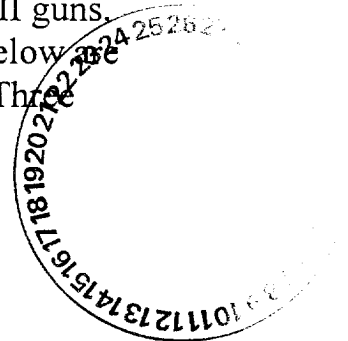
Gross Interval: 330'

Net Interval: 156'

Holes: 331

12. NU 5,000 psi casing saver to isolate well head. RU DS. Test lines to 5000 psi. Establish injection into formation with 2% KCl. Acid frac with 15,000 gallons 20% HCl, 12,000 gallons WF125 and 940,000 SCF N2. Drop 165 ball sealers throughout acid job. Pump job at 30 BPM with a maximum surface treating pressure of 4200 psi. Pumping schedule attached. Shut in for 1 hour. RD casing saver and DS. Surge balls off.
13. Flow back. Continue flowing well to clean up acid job.
14. Rig up Schlumberger lubricator and pressure test to 2,000 psi. RIH and set a wireline set, tubing retrievable RBP with a ball catcher at +/- 6670'.
15. RIH w/CCL and 4" guns and perforate the Drinkard intervals listed below, using a combination of 4" HEGS and 4" HYPER II guns. Perforate at 2 SPF 90 degree phasing. Intervals shown below are correlated to the Schlumberger: Compensated Neutron / Three Detector - Litho-Density log dated January 25, 2002.

<u>Interval</u>	<u>Feet</u>	<u>Shots</u>
6304-6334'	30'	61
6352-6356'	4'	9
6378-6384'	6'	13
6387-6392'	5'	11
6394-6397'	3'	7



G. W. Sims No. 5
Lea County, New Mexico
Tubb / Drinkard / Abo Completion Procedure
February 15, 2002

6448-6452'	4'	9
6462-6474'	12'	25
6488-6494'	6'	13
6506-6509'	3'	7
6514-6536'	22'	45
6542-6550'	8'	17
6552-6557'	5'	11
6567-6577'	10'	21
6580-6587'	7'	15
6603-6616'	13'	27

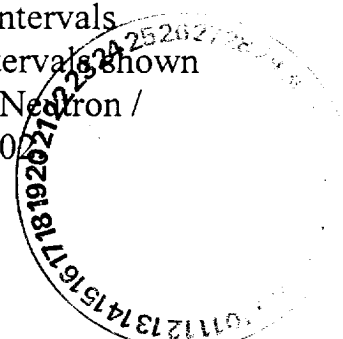
Gross Interval: 312'

Net Interval: 138'

Holes: 291

16. NU 5,000 psi casing saver to isolate well head. RU DS. Test lines to 5000 psi. Establish injection into formation with 2% KCl. Acid frac with 13,800 gallons 20% HCl, 9,240 gallons WF125, and 770,000 SCF of N2. Drop 145 bio ball sealers throughout acid job. Pump job at 30 BPM with a maximum pressure of 4200 psi. Pumping schedule attached. Shut in for 1 hour. RD casing saver and DS. Surge balls off.
17. Flow back. Continue flowing well to clean up acid job.
18. Rig up Schlumberger lubricator and pressure test to 2000 psi. RIH and set a wireline set, tubing retrievable RBP with a ball catcher at +/- 6280'.
19. RIH w/CCL and 4" HEGS guns and perforate the Tubb intervals listed below. Perforate at 2 SPF 120 degree phasing. Intervals shown below are correlated to the Schlumberger: Compensated Neutron / Three Detector - Litho-Density log dated January 25, 2002.

<u>Interval</u>	<u>Feet</u>	<u>Shots</u>
6105-6110'	5'	11
6112-6121'	9'	19

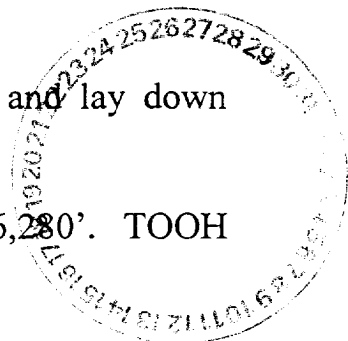


G. W. Sims No. 5
Lea County, New Mexico
Tubb / Drinkard / Abo Completion Procedure
February 15, 2002

6130-6134'	4'	9
6145-6156'	11'	23
6217-6235'	18'	37
6240-6246'	6'	13
6248-6255'	7'	15

Gross Interval: 150'
Net Interval: 60'
Holes: 127

20. NU 5,000 psi casing saver to isolate well head. RU DS. Test lines to 5000 psi. Acidize perforations with 4,000 gallons of 15% HCl at 4 to 6 BPM. Drop 240 ball sealers during treatment. Flush acid to perforations. Maximum treating pressure of 4200 psi. Pumping schedule attached. Shut in for 1 hour. Surge balls off and flow back.
21. Fracture stimulate the Tubb perforations with 30,000 gallons YF140 pad, 38,000 gallons YF135 carrying 168,000 lbs. 20/40 Jordan sand and flush (2 bbl underflush to top shot) with 5,916 gallons WF120 down 5-1/2" casing as per the attached schedule.
22. Shut in well for 1min. , collect pressure data, flow well back until closure is observed (closure can be seen by slope change in Pressure vs. $(t)^{-1/2}$ plot. Take 5, 10 and 15-minute shut-in pressure readings. Rig down casing saver and DS.
23. Flow back. Continue flowing well to clean up frac job.
24. MIRU pulling unit. Pickup 2-7/8" production tubing and TIH with notched collar on 2-7/8" tubing and clean out sand and ball sealers to the RBP set at +/- 6,670'. TOOH.
25. TIH with retrieving head and release RBP. TOOH and lay down RBP.
26. TIH with retrieving head and release RBP set at +/- 6,280'. TOOH and lay down RBP.



G. W. Sims No. 5
Lea County, New Mexico
Tubb / Drinkard / Abo Completion Procedure
February 15, 2002

27. TIH with tubing and clean out to PBTD of 7,200'.
28. Run production equipment as per ALS recommendation.
29. RDMOSU. Place well on production.



DISTRICT I
P.O. Box 1980, Hobbs, NM 88241-1980

DISTRICT II

P.O. Box Drawer DD, Artesia, NM 88211-0719

DISTRICT III

1000 Rio Brazos Rd., Aztec, NM 87410

DISTRICT IV

P.O. Box 2088, Santa Fe, NM 87504-2088

State of New Mexico
Energy, Minerals and Natural Resources Department

OIL CONSERVATION DIVISION

P.O. Box 2088
Santa Fe, New Mexico 87504-2088

Form C-102

Revised February 10, 1999

Instructions on back

Submit to Appropriate District Office

State Lease - 4 Copies

Fee Lease - 3 Copies

☐ AMENDED REPORT

WELL LOCATION AND ACREAGE DEDICATION PLAT

¹ API Number 30-025-35502	² Pool Code 96315	³ Pool Name TEAGUE TUBB N. ASSOC
⁴ Property Code 13194	⁵ Property Name SIMS G. W.	⁶ Well No. 5
⁷ OGRID Number 022351	⁸ Operator Name TEXACO EXPLORATION & PRODUCTION INC.	⁹ Elevation 3310'

¹⁰ Surface Location

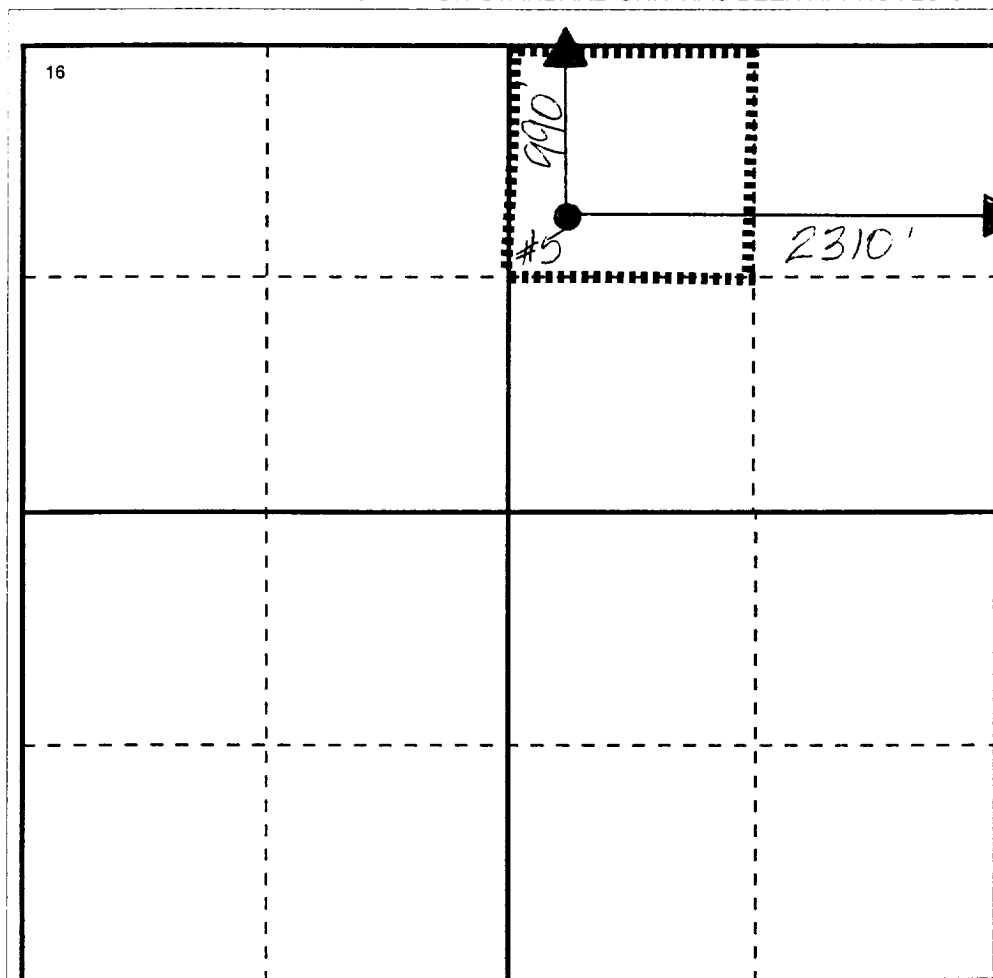
UI or lot no	Section	Township	Range	Lot.Idn	Feet From The	North/South Line	Feet From The	East/West Line	County
B	9	23-S	37-E		990'	NORTH	2310'	EAST	LEA

¹¹ Bottom Hole Location If Different From Surface

UI or lot no	Section	Township	Range	Lot.Idn	Feet From The	North/South Line	Feet From The	East/West Line	County

¹² Dedicated Acre 40	¹³ Joint or Infill No	¹⁴ Consolidation Code	¹⁵ Order No.
------------------------------------	-------------------------------------	----------------------------------	-------------------------

NO ALLOWABLE WILL BE ASSIGNED TO THIS COMPLETION UNTIL ALL INTERESTS HAVE BEEN CONSOLIDATED
OR A NON-STANDARD UNIT HAS BEEN APPROVED BY THE DIVISION



¹⁷ OPERATOR CERTIFICATION

I hereby certify that the information
contained herein is true and complete to the
best of my knowledge and belief

Signature

Printed Name

J. Denise Leake

Position

Regulatory Specialist

Date

2/20/02

¹⁸ SURVEYOR CERTIFICATION

I hereby certify that the well location shown
on this plat was plotted from field notes of
actual surveys made by me or under my
supervision, and that the same is true and
correct to the best of my knowledge and
belief.

Date Surveyed

Signature & Seal of

Professional Surveyor

Certificate No.

DISTRICT I
P.O. Box 1980, Hobbs, NM 88241-1980

DISTRICT II

P.O. Box Drawer DD, Artesia, NM 88211-0719

DISTRICT III

1000 Rio Brazos Rd., Aztec, NM 87410

DISTRICT IV

P.O. Box 2088, Santa Fe, NM 87504-2088

State of New Mexico
Energy, Minerals and Natural Resources Department

OIL CONSERVATION DIVISION

P.O. Box 2088
Santa Fe, New Mexico 87504-2088

Form C-10 2

Revised February 10, 1999

Instructions on back

Submit to Appropriate District Office

State Lease - 4 Copie

Fee Lease - 3 Copie

☐ AMENDED REPORT

WELL LOCATION AND ACREAGE DEDICATION PLAT

¹ API Number 30-025-35502	² Pool Code 96313	³ Pool Name TEAGUE DRINKARD ABO N.
⁴ Property Code 13194	⁵ Property Name SIMS G. W.	⁶ Well No. 5
⁷ OGRID Number 022351	⁸ Operator Name TEXACO EXPLORATION & PRODUCTION INC.	⁹ Elevation 3310'

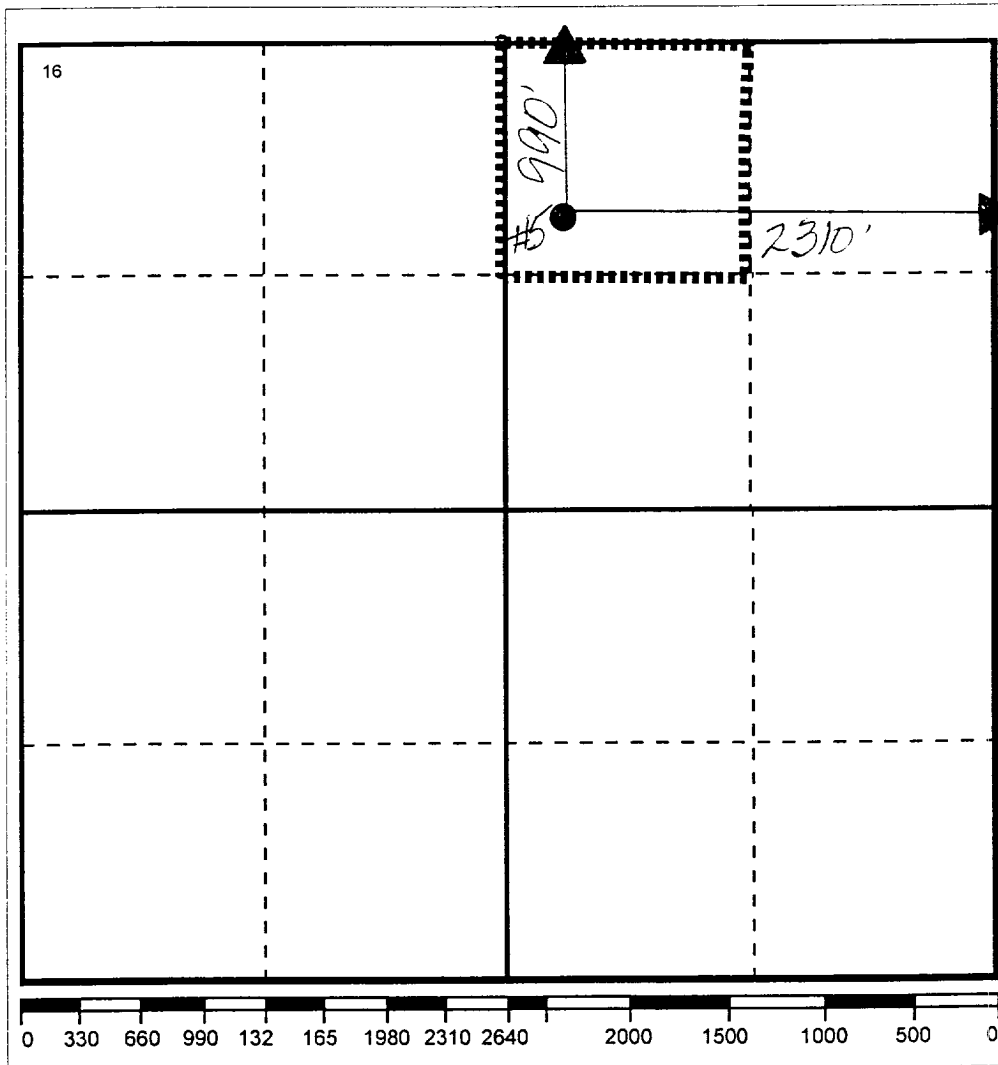
¹⁰ Surface Location

UI or lot no B	Section 9	Township 23-S	Range 37-E	Lot.Idn	Feet From The 990'	North/South Line NORTH	Feet From The 2310'	East/West Line EAST	County LEA
-------------------	--------------	------------------	---------------	---------	-----------------------	---------------------------	------------------------	------------------------	---------------

¹¹ Bottom Hole Location If Different From Surface

UI or lot no	Section	Township	Range	Lot.Idn	Feet From The	North/South Line	Feet From The	East/West Line	County
¹² Dedicated Acre 40	¹³ Joint or Infill No	¹⁴ Consolidation Code	¹⁵ Order No.						

NO ALLOWABLE WILL BE ASSIGNED TO THIS COMPLETION UNTIL ALL INTERESTS HAVE BEEN CONSOLIDATED
OR A NON-STANDARD UNIT HAS BEEN APPROVED BY THE DIVISION



17 OPERATOR CERTIFICATION

I hereby certify that the information
contained herein is true and complete to the
best of my knowledge and belief

Signature

Printed Name

J. Denise Leake

Positio

Regulatory Specialist

Date

2/20/02

18 SURVEYOR CERTIFICATION

I hereby certify that the well location shown
on this plat was plotted from field notes of
actual surveys made by me or under my
supervision, and that the same is true and
correct to the best of my knowledge and
belief.

Date Surveyed

Signature & Seal of

Professional Surveyor

Certificate No.