

District I  
1623 N. French Dr., Hobbs, NM 88240  
District II  
811 S. 1st Street, Artesia, NM 88210  
District III  
1000 Rio Brazos Rd., Aztec, NM 87410  
District IV  
2040 South Pacheco, Santa Fe, NM 87505

State of New Mexico  
Energy, Minerals & Natural Resources

Oil Conservation Division  
2040 South Pacheco  
Santa Fe, NM 87505

Form C-101  
Revised March 17, 1999

Submit to appropriate District Office  
State Lease - 6 Copies  
Fee Lease - 5 Copies

☒ AMENDED REPORT

APPLICATION FOR PERMIT TO DRILL, RE-ENTER, DEEPEN, PLUGBACK, OR ADD A ZONE

<sup>1</sup> Operator Name and Address CHEVRON U.S.A. 15 SMITH ROAD, MIDLAND, TX 79705		<sup>2</sup> OGRID Number 4323
		<sup>3</sup> API Number 30- 30-025-35643
<sup>4</sup> Property Code 29908	<sup>5</sup> Property Name B F HARRISON 'B'	<sup>6</sup> Well No. 28

<sup>7</sup> Surface Location

UL or lot no.	Section	Township	Range	Lot. Idn	Feet from the	North/South Line	Feet from the	East/West line	County
I	5	23-S	37-E		1650'	SOUTH	840'	EAST	LEA

<sup>8</sup> Proposed Bottom Hole Location If Different From Surface

UL or lot no.	Section	Township	Range	Lot. Idn	Feet from the	North/South Line	Feet from the	East/West line	County

<sup>9</sup> Proposed Pool 1 Teague; L. Paddock-Blincy, No./Drinkard-Abo, No.	<sup>10</sup> Proposed Pool 2 Teague; Devonian Northwest, SW Tubb. No.
----------------------------------------------------------------------------------	---------------------------------------------------------------------------

<sup>11</sup> Work Type Code N	<sup>12</sup> Well Type Code O	<sup>13</sup> Cable/Rotary ROTARY	<sup>14</sup> Lease Type Code P	<sup>15</sup> Ground Level Elevation 3334'
<sup>16</sup> Multiple NO	<sup>17</sup> Proposed Depth 7600'	<sup>18</sup> Formation Devonian	<sup>19</sup> Contractor	<sup>20</sup> Spud Date 9-07-02

<sup>21</sup> Proposed Casing and Cement Program

Hole Size	Casing Size	Casing weight/foot	Setting Depth	Sacks of Cement	Estimated TOC
12 1/4"	8 5/8"	24#	1200'	670	CIRCULATED
7 7/8"	5 1/2"	17#	7600'	1980	CIRCULATE

<sup>22</sup> Describe the proposed program. If this application is to DEEPEN or PLUG BACK, give the data on the present productive zone and proposed new productive zone. Describe the blowout prevention program, if any. Use additional sheets if necessary.

CEMENTING PROGRAM:

SURFACE CASING: 530 sacks Class C w/2% Gel, 2% CaCl<sub>2</sub> (13.5 PPG, 1.74 CF/S, 9.11 GW/S). F/B 140 sacks Class C w/2% Gel (14.8 PPG, 1.34 CF/S, 6.30 GW/S).

PRODUCTION CASING: 400 sacks 50/50 Poz Class H w/2% Gel, 5% Salt, 1/4# FC (14.2 PPG, 1.35 CF/S, 6.30 GW/S). F/B 1280 sacks 35/65 Poz Class H w/6% Gel, 5% Salt, 1/4# FC (12.4 PPG, 2.17 CF/S, 10.46 GW/S).

F/B 300 sacks 50/50 Poz Class H w/2% Gel, 5% Salt, 1/4# FC (14.2 PPG, 1.35 CF/S, 6.30 GW/S).

THIS IS AN AMENDED REPORT - CURRENT PERMIT HAS EXPIRED & WE ARE REQUESTING AN EXTENSION

<sup>23</sup> I hereby certify that the information given above is true and complete to the best of my knowledge and belief.

Signature:

*J. Denise Leake*

Printed name: J. Denise Leake

Title: Regulatory & Permit Specialist

Date:

8-23-02

Phone:

(915) 687-7375

OIL CONSERVATION DIVISION

Approved by:

ORIGINAL SIGNED BY

PAUL F. KAUTZ

Title:

PETROLEUM ENGINEER

Approval Date:

Expiration Date:

Conditions of Approval:

Attached **AUG 28 2002**

JCA

DISTRICT I  
P. O. Box 1980, Hobbs, NM 88240  
DISTRICT II  
P. O. Drawer DD, Artesia, NM 88210  
DISTRICT III  
1000 Rio Brazos Rd., Aztec, NM 87410  
DISTRICT IV  
P. O. Box 2088, Santa Fe, NM 87504-2088

State of New Mexico  
Energy, Minerals and Natural Resources Department

Form C-102  
Revised February 10, 1994

Instructions on back

OIL CONSERVATION DIVISION

PO Box 2088  
Santa Fe, NM 87504-2088

Submit to Appropriate District Office

State Lease-4 copies  
Fee Lease-3 copies

☒ AMENDED REPORT

WELL LOCATION AND ACREAGE DEDICATION PLAT

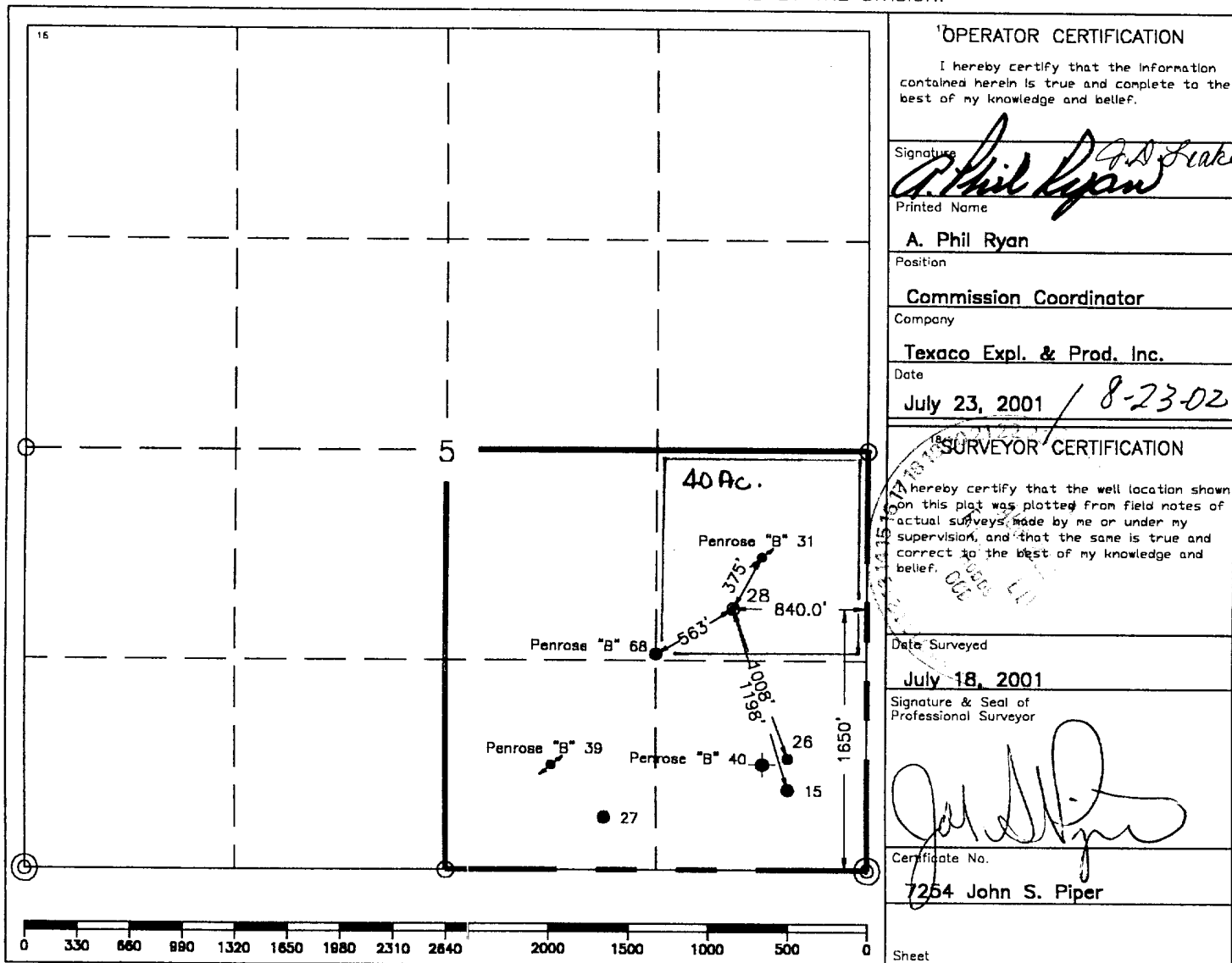
<sup>1</sup> API Number 30-025-35643		<sup>2</sup> Pool Code 58365		<sup>3</sup> Pool Name Teague, Drinkard-Abo, No.; Teague, Tubb, No.; Teague, Devonian, NW; Teague, Glorieta-Upper Paddock, SW; Teague, L. Paddock-Blinebry, No.	
<sup>4</sup> Property Code 29908		<sup>5</sup> Property Name B. F. Harrison "B"			
<sup>6</sup> GRID No. 4323		<sup>7</sup> Operator Name TEXACO EXPLORATION & PRODUCTION, INC.			
				<sup>8</sup> Well Number 28	
				<sup>9</sup> Elevation 3334'	

<sup>10</sup> Surface Location									
UL or lot no. 1	Section 5	Township 23-S	Range 37-E	Lot Idn	Feet from the 1650'	North/South line South	Feet from the 840'	East/West line East	County Lea

<sup>11</sup> Bottom Hole Location If Different From Surface									
UL or lot no.	Section	Township	Range	Lot Idn	Feet from the	North/South line	Feet from the	East/West line	County

<sup>12</sup> Dedicated Acres 40	<sup>13</sup> Joint or Infill	<sup>14</sup> Consolidation Code	<sup>15</sup> Order No.
-------------------------------------	-------------------------------	----------------------------------	-------------------------

NO ALLOWABLE WILL BE ASSIGNED TO THIS COMPLETION UNTIL ALL INTERESTS HAVE BEEN CONSOLIDATED  
OR A NON-STANDARD UNIT HAS BEEN APPROVED BY THE DIVISION.



○ = Staked Location ● = Producing Well = Injection Well = Water Supply Well = Plugged & Abandon Well  
⊙ = Found Section Corner, 2 or 3" Iron Pipe & GLO B.C. ○ = Found 1/4 Section Corner, 1" Iron Pipe & GLO B.C.

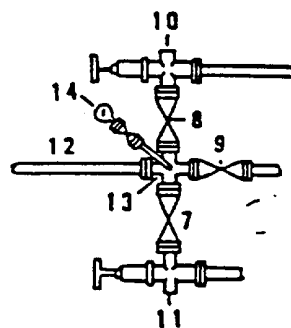
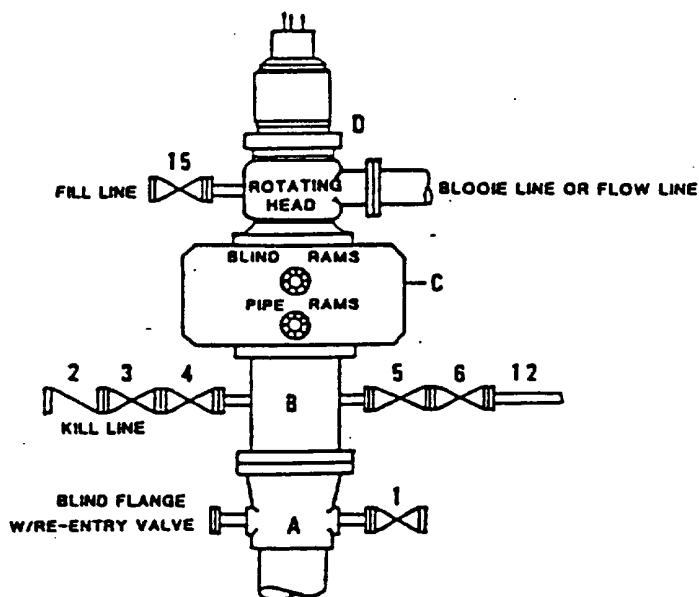
ADDITIONAL INFORMATION ON THE LOCATION

State Plane Coordinates			
Northing 485924.31		Easting 856639.52	
Latitude 32°19'50.298."		Longitude 103°10'43.445"	
Zone	North American Datum	Combined Grid Factor	Coordinate File
East	1927	0.9999012	Penrose.cr5
Drawing File	Field Book		
BFHarB28.dwa	Lea Co. 20 Pg. 55		

# DRILLING CONTROL CONDITION II-B 3000 WP

FOR AIR DRILLING OR  
WHERE NITROGEN OR AIR BLOWS ARE EXPECTED

H<sub>2</sub>S TRIM REQUIRED  
YES \_\_\_\_\_ NO X



## DRILLING CONTROL

### MATERIAL LIST - CONDITION II - B

- A Texaco Wellhead
- B 3000# W.P. drilling spool with a 2" minimum flanged outlet for kill line and 3" minimum flanged outlet for choke line.
- C 3000# W.P. Dual ram type preventer, hydraulic operated with 1" steel, 3000# W.P. control lines (where sub-structure height is adequate, 2 - 3000# W.P. single ram type preventers may be utilized).
- D Rotating Head with fill up outlet and extended Bleed Line.
- 1,3,4, 7,8, 2" minimum 3000# W.P. flanged full opening steel gate valve, or Halliburton Lo Torc Plug valve.
- 2 2" minimum 3000# W.P. back pressure valve.
- 5,6,9 3" minimum 3000# W.P. flanged full opening steel gate valve, or Halliburton Lo Torc Plug valve.
- 12 3" minimum schedule 80, Grade "B", seamless line pipe.
- 13 2" minimum x 3" minimum 3000# W.P. flanged cross.
- 10,11 2" minimum 3000# W.P. adjustable choke bodies.
- 14 Cameron Mud Gauge or equivalent ( location optional in choke line).
- 15 2" minimum 3000# W.P. flanged or threaded full opening steel gate valve, or Halliburton Lo Torc Plug valve.



TEXACO, INC.  
MIDLAND DIVISION  
MIDLAND, TEXAS



SCALE	DATE	EST. NO.	DRG. NO.
DRAWN BY			
CHECKED BY			
APPROVED BY			

EXHIBIT C

