

District I
PO Box 1988, Hobbs, NM 88241-1988
District II
PO Drawer DD, Artesia, NM 88211-0719
District III
1000 Rio Brazos Rd., Aztec, NM 87410
District IV
PO Box 2088, Santa Fe, NM 87504-2088

State of New Mexico
Energy, Minerals & Natural Resources Department

OIL CONSERVATION DIVISION
PO Box 2088
Santa Fe, NM 87504-2088

Form C-102
Revised February 10, 1994
Instructions on back
Submit to Appropriate District Office
State Lease - 4 Copies
Fee Lease - 3 Copies

☐ AMENDED REPORT

WELL LOCATION AND ACREAGE DEDICATION PLAT

| | | | | |
|----------------------------|--|---------------------------|---|-----------------------|
| API Number 30-025-09793 | | Pool Code 033820-79240 | Pool Name JALMAT (TNSL-YTS-7 RVRS) (OIL) Gas | |
| Property Code 020777 | Property Name ASCARTE C-24 | | | Well Number 1 |
| OGRID No. 148981 | Operator Name MIDLAND OPERATING, INC. | | | Elevation 3109' GL |

¹⁰ Surface Location

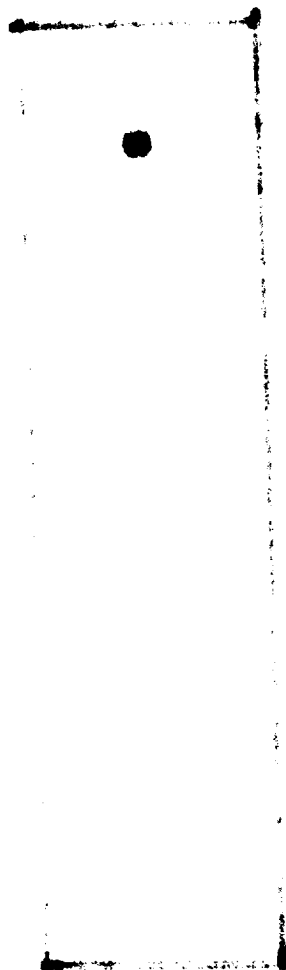
| UL or lot no. | Section | Township | Range | Lot Ida | Feet from the | North/South line | Feet from the | East/West line | County |
|---------------|---------|----------|-------|---------|---------------|------------------|---------------|----------------|--------|
| B | 24 | 25S | 36E | | 660 | NORTH | 1980 | EAST | LEA |

¹¹ Bottom Hole Location If Different From Surface

| UL or lot no. | Section | Township | Range | Lot Ida | Feet from the | North/South line | Feet from the | East/West line | County |
|---------------------------------------|---------|-------------------------------|-------|----------------------------------|---------------|-------------------------|---------------|----------------|--------|
| | | | | | | | | | |
| ¹² Dedication Acres 160 | | ¹³ Joint or Infill | | ¹⁴ Consolidation Code | | ¹⁵ Order No. | | | |

NO ALLOWABLE WILL BE ASSIGNED TO THIS COMPLETION UNTIL ALL INTERESTS HAVE BEEN CONSOLIDATED
OR A NON-STANDARD UNIT HAS BEEN APPROVED BY THE DIVISION

| | | | | | |
|----|--|--|--|--|---|
| 16 | | | | | ¹⁷ OPERATOR CERTIFICATION I hereby certify that the information contained herein is true and complete to the best of my knowledge and belief. Michael D. Prichard Signature Michael D. Prichard Printed Name Operations Engineer Title 9/29/99 Date |
| | | | | | |
| | | | | | |
| | | | | | |
| | | | | | ¹⁸ SURVEYOR CERTIFICATION I hereby certify that the well location shown on this plat was plotted from field notes of actual surveys made by me or under my supervision, and that the same is true and correct to the best of my belief. Date of Survey Signature and Seal of Professional Surveyor: Certificate Number |
| | | | | | |
| | | | | | |
| | | | | | |



All distances must be from the outer boundaries of the Section:

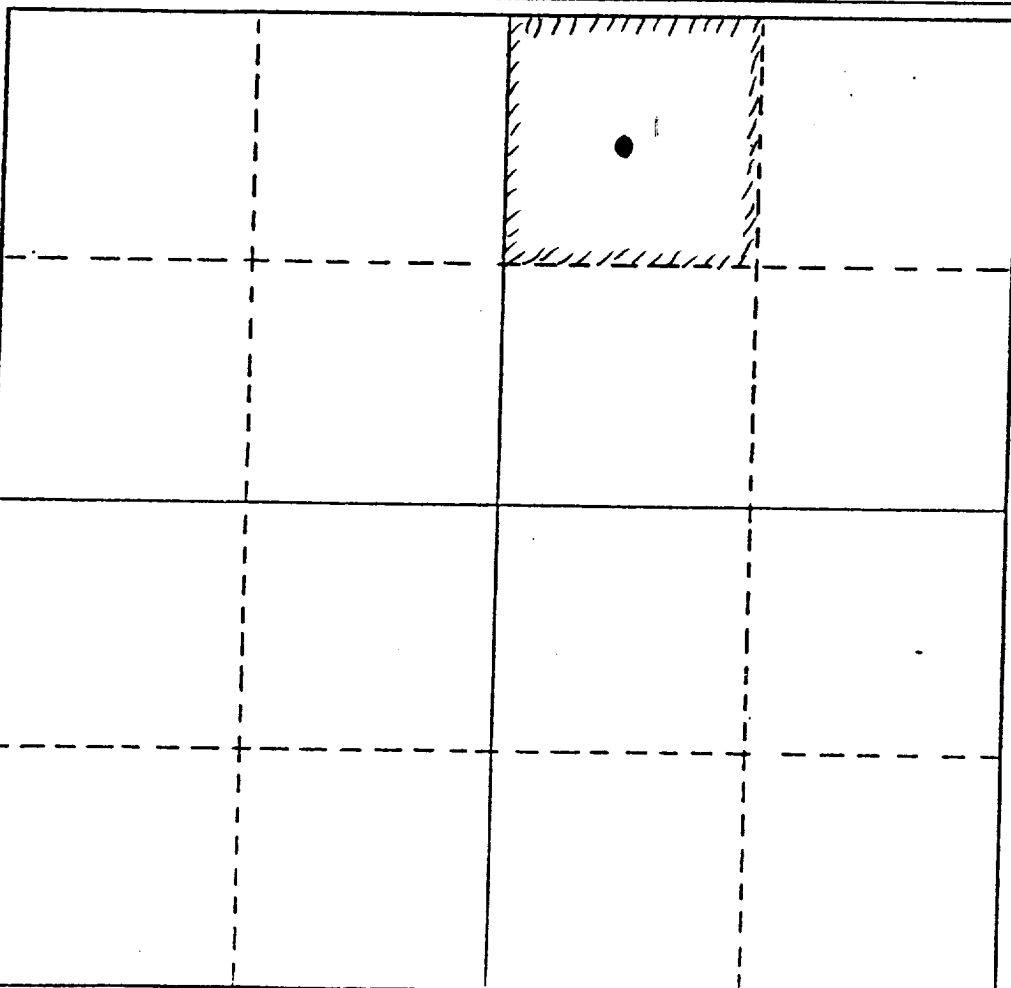
| | | | | | | | | |
|---|----------------------|-------------------------------------|------------------------------|----------------------|----------------------------------|----------------------|---------------------------------------|--|
| Operator Lewis B. Burleson, Inc. | | | Lease Ascarte C-24 | | | Well No. 1 | | |
| Unit Letter B | Section 24 | Township 25-S | | Range 36-E | County Lea | | | |
| Actual Footage Location of Well: 660 feet from the North line and 1980 feet from the East line | | | | | | | | |
| Ground Level Elev. 660 | | Producing Formation Yates | | | Pool Jalmat (T-Yts-7R) | | Dedicated Acreage: 40 Acres | |

1. Outline the acreage dedicated to the subject well by colored pencil or hatchure marks on the plat below.
2. If more than one lease is dedicated to the well, outline each and identify the ownership thereof (both as to working interest and royalty).
3. If more than one lease of different ownership is dedicated to the well, have the interests of all owners been consolidated by communitization, unitization, force-pooling, etc?

☐ Yes ☐ No If answer is "yes," type of consolidation *(Reclassify to oil 6-1-88)*

If answer is "no," list the owners and tract descriptions which have actually been consolidated. (Use reverse side of this form if necessary.) _____

No allowable will be assigned to the well until all interests have been consolidated (by communitization, unitization, forced-pooling, or otherwise) or until a non-standard unit, eliminating such interests, has been approved by the Division.



CERTIFICATION

I hereby certify that the information contained herein is true and complete to the best of my knowledge and belief.

Steve Burleson

Name

Steve Burleson

Position

Vice-President

Company

Lewis B. Burleson, Inc.

Date

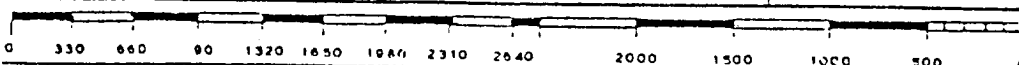
4/26/88

I hereby certify that the well location shown on this plat was plotted from field notes of actual surveys made by me or under my supervision, and that the same is true and correct to the best of my knowledge and belief.

Date Surveyed

Registered Land Surveyor

Certificate No.



All distances must be from the outer boundary of the Section.

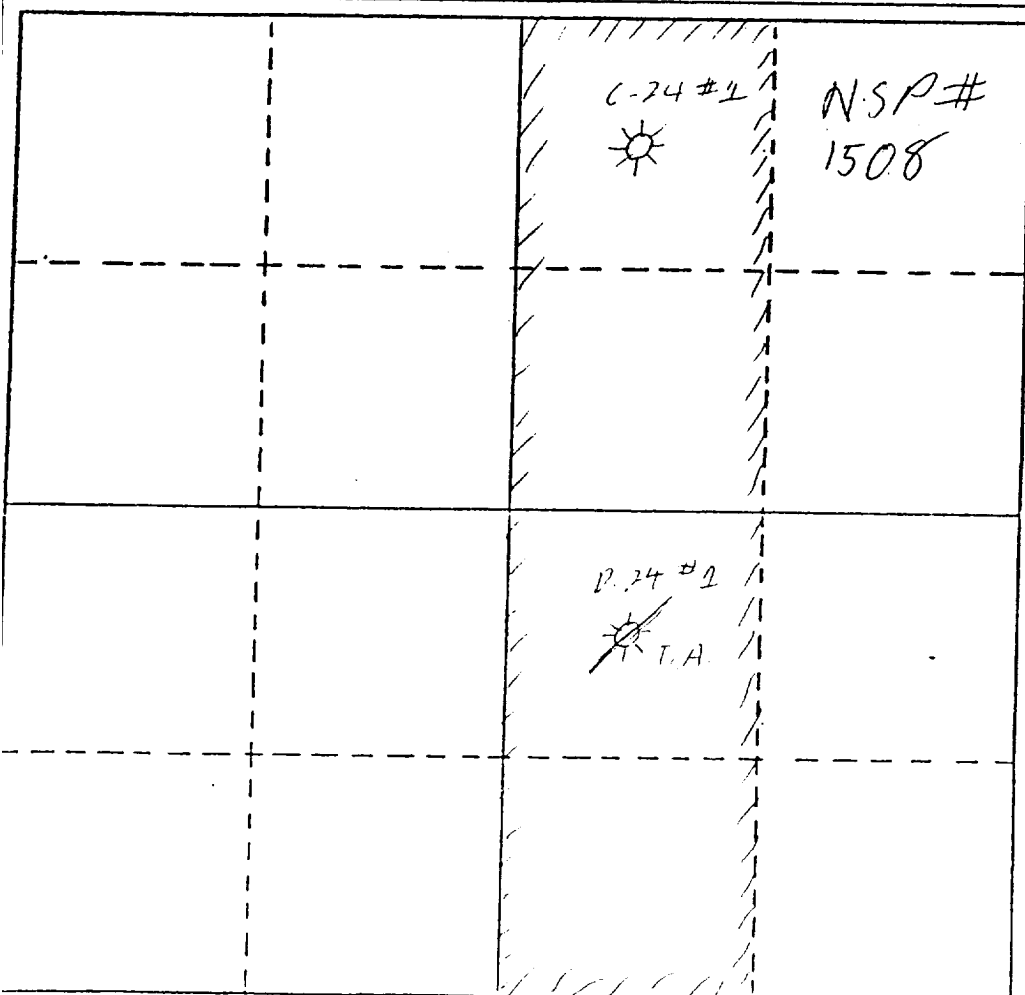
| | | | | | |
|-------------------------------------|------------------------------|---------------------------------------|---------------------------------|---------------|---------------|
| Operator Lewis B. Burleson, Inc. | | | Lease Ascarte C-24 | | Well No. 1 |
| Unit Letter B | Section 24 | Township 25-S | Range 36-E | County Lea | |
| Actual Footage Location of Well: | | | | | |
| 660 feet from the North line and | | 1980 feet from the East line | | | |
| Ground Level Elev. 3109 | Producing Formation Yates | Pool Palmat T-Y-SK Palmat (Gas) | Dedicated Acreage: 160 Acres | | |

1. Outline the acreage dedicated to the subject well by colored pencil or hatchure marks on the plat below.
2. If more than one lease is dedicated to the well, outline each and identify the ownership thereof (both as to working interest and royalty).
3. If more than one lease of different ownership is dedicated to the well, have the interests of all owners been consolidated by communitization, unitization, force-pooling, etc?

☒ Yes ☐ No If answer is "yes," type of consolidation Communitization

If answer is "no," list the owners and tract descriptions which have actually been consolidated. (Use reverse side of this form if necessary.)

No allowable will be assigned to the well until all interests have been consolidated (by communitization, unitization, forced-pooling, or otherwise) or until a non-standard unit, eliminating such interests, has been approved by the Division.



CERTIFICATION

I hereby certify that the information contained herein is true and complete to the best of my knowledge and belief.

Name
Steven Burleson
Position
Vice-President
Company
Lewis B. Burleson, Inc.
Date
Feb. 12, 1988

I hereby certify that the well location shown on this plat was plotted from field notes of actual surveys made by me or under my supervision, and that the same is true and correct to the best of my knowledge and belief.

Date Surveyed

Registered Land Surveyor

Certificate No.

330 660 990 1320 1650 1980 2310 2640 2970 3300 3630 3960 4290 4620 4950 5280 5610 5940 6270 6600

NEW MEXICO
OIL CONSERVATION COMMISSION

Gas Well Drilling

DEC 14 1953

RECEIVED

Date 11/5/53

Continental Oil Co.

Ascarate C-24

1

Operator

Lease

Well No.

Name of Producing Formation Yates

Pool Jalco

No. Acres Dedicated to the Well 80

SECTION 24

TOWNSHIP 25

RANGE 36

| | | | |
|--|--|--------|--|
| | | 1 ☼ | |
| | | | |
| | | | |
| | | | |

I hereby certify that the information given above is true and complete to the best of my knowledge.

Name W. H. Hobbs

Position Dist. Supt.

Representing Continental Oil Co.

Address Box 427 Hobbs, N. M.

(over)

INSTRUCTIONS

1. Is this gas well a dual completion? Yes No ✓
2. If the answer to Question 1 is Yes, are there any
other dually completed wells within the dedicated
acreage? Yes No

A separate plat must be filed for each gas well, outlining the area dedicated to such well and showing the location of all other wells (oil and gas) within the outlined area.

Mail in duplicate to the district office for the district in which the well is located.