

DISTRICT I  
P.O. Box 1980, Hobbs, NM 88241-1980

State of New Mexico  
Energy, Minerals and Natural Resources Department

Form C-102  
Revised February 10, 1994

DISTRICT II  
P.O. Box Drawer DD, Artesia, NM 88211-0719

# OIL CONSERVATION DIVISION

Instructions on back  
Submit to Appropriate District Office

DISTRICT III  
1000 Rio Brazos Rd., Aztec, NM 87410

P.O. Box 2088

Santa Fe, New Mexico 87504-2088

State Lease - 4 Copies

DISTRICT IV  
P.O. Box 2088, Santa Fe, NM 87504-2088

Fee Lease - 3 Copies

☐ AMENDED REPORT

## WELL LOCATION AND ACREAGE DEDICATION PLAT

<sup>1</sup> API Number 30 025 11145	<sup>2</sup> Pool Code 79240	<sup>3</sup> Pool Name JALMAT; TAN-YATES-7 RVRS (PRO GAS)
<sup>4</sup> Property Code 010917	<sup>5</sup> Property Name COOPER JAL UNIT	<sup>6</sup> Well No. 101
<sup>7</sup> OGRID Number 022351	<sup>8</sup> Operator Name TEXACO EXPLORATION & PRODUCTION INC.	<sup>9</sup> Elevation 3306'GL

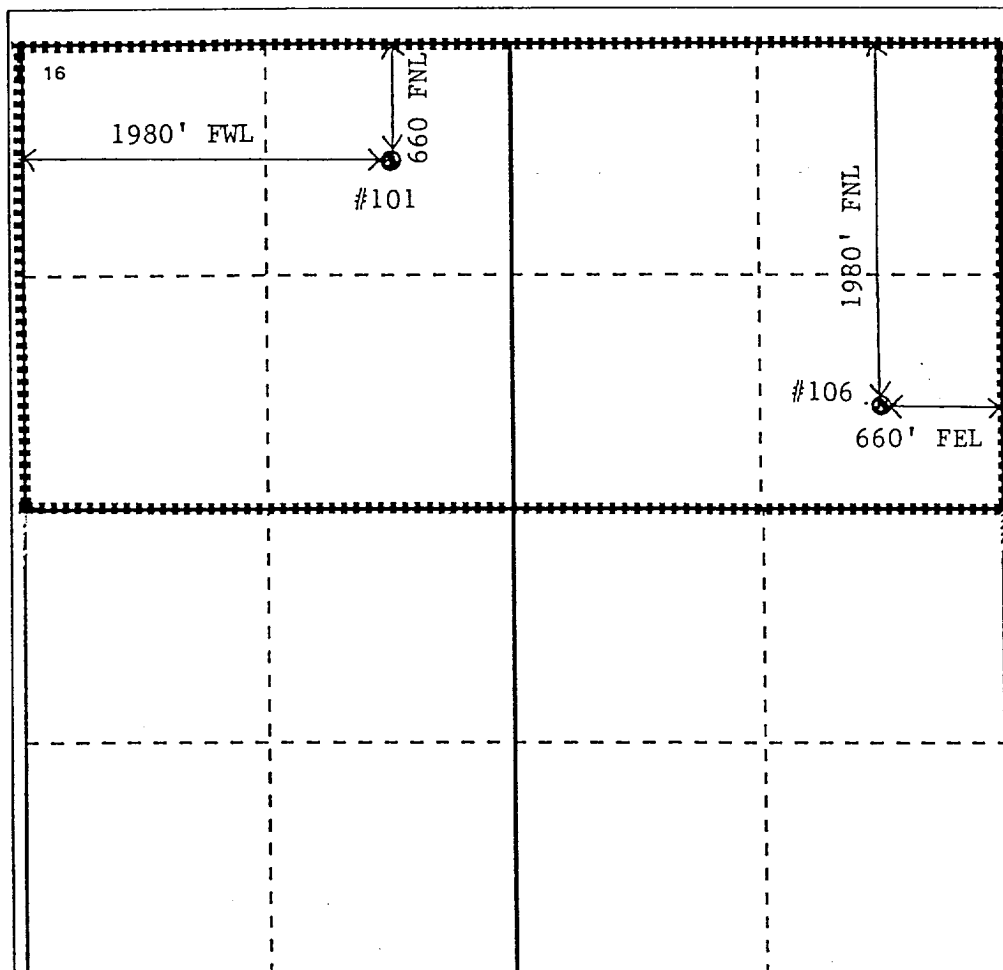
### <sup>10</sup> Surface Location

Ul or lot no.	Section	Township	Range	Lot.Idn	Feet From The	North/South Line	Feet From The	East/West Line	County
C	18	24S	37E		660	NORTH	1980	WEST	LEA

### <sup>11</sup> Bottom Hole Location If Different From Surface

Ul or lot no.	Section	Township	Range	Lot.Idn	Feet From The	North/South Line	Feet From The	East/West Line	County
<sup>12</sup> Dedicated Acres 320	<sup>13</sup> Joint or Infill No	<sup>14</sup> Consolidation Code	<sup>15</sup> Order No.						

NO ALLOWABLE WILL BE ASSIGNED TO THIS COMPLETION UNTIL ALL INTERESTS HAVE BEEN CONSOLIDATED  
OR A NON-STANDARD UNIT HAS BEEN APPROVED BY THE DIVISION



### 17 OPERATOR CERTIFICATION

I hereby certify that the information  
contained herein is true and complete to the  
best of my knowledge and belief

Signature

Printed Name

Paula S. Ives

Position

Engineering Assistant

Date

9/23/96

### 18 SURVEYOR CERTIFICATION

I hereby certify that the well location shown  
on this plat was plotted from field notes of  
actual surveys made by me or under my  
supervision, and that the same is true and  
correct to the best of my knowledge and  
belief.

Date Surveyed

Signature & Seal of  
Professional Surveyor

Certificate No.