

COUNTY LEA FIELD Fowler STATE NM MN 11204
 OPR AMOCO PRODUCTION CO. MAP
 13 South Mattix Unit - Federal
 Sec 22, T-24-S, R-37-E
 2310' FSL, 330' FEL of Sec CO-ORD

Re-Cmp 3-31-71		CLASS OWOF EL 32548	
CSG & SX - TUBING	FORMATION	DATUM	FORMATION
13 3/8" at 310' w/380 SX			
9 5/8" at 4374' w/625 SX			
5 1/2" at 7856' w/200 SX.			
LOGS EL GR RA IND HC A			

TD 7856'; PBD 5720'
 (Upper Yeso) Perfs 5154-5695' NO NEW POTENTIAL.

Distribution limited and publication prohibited by subscribers' agreement.
 Reproduction rights reserved by Williams & Lee Sealing Service, Inc.

CONT. DATE PROP DEPTH 5695' TYPE WO

F.R.C. 4-22-71
 PD 5695' WO (Upper Yeso)
 (Orig. Stanolind Oil & Gas Co. #13 South Mattix
 Unit, comp 1-28-55 thru (Fusselman) Perfs 7575-7640',
 OTD 7856', OPB 7646'; OWWO by Pan American Pet.
 Corp. & Re-Cmp 8-5-59 thru (Silurian) Perfs
 7296-7310', OPB 7500'; OWWO & Re-Cmp 1-28-65
 thru (Blinebry) Perfs 5448-5695', OPB 5720')
 4-19-71 TD 7856'; PBD 5720'; COMPLETE
 Perf 5154-5398' (overall)
 Acid (5154-5695') 5000 gals
 4-22-71 Ppd 36 BO + 4 BW in 24 hrs (5154-5695')
 COMPLETION REPORTED

COUNTY LEA Ref. 2. 1/2 Sec. Blinberry STATE NM OWWO
 OPR PAN AMERICAN PETROLEUM CORPORATION MAP
 13 South Main, Edinburg, Texas
 Sec. 22 T-24-S 1-R-2-E CO-ORD
 2310' fr S line to 330' fr N line of Sec.

Re-Comp 1-28-65	CLASS		EL	
	FORMATION	DATUM	FORMATION	DATUM
CSG & SX - TUBING				
13 3/8" 310'				
9 5/8" 4370'				
5 1/2" 7850'				
LOGS EL GR RA IND NO				
	7296'	240 5720'		

IP Blinberry Perfs 5448-5695' Two 1/2" 3000' Pot. Based on 24 hr test thru 12/64" chkr., TP 15504, gravity 30.5, GOR 6750.

Distribution limited and publication prohibited by subscribers' agreement.
 Reproduction rights reserved by Williams & Lee Scouting Service, Inc.

CONT. PROP. DEPTH TYPE
 DATE

3-1-65 F.R.L. 3-1-65: OWWO, OPR 7855'
 Orig. comp from Blinberry 7296-7310'
 TP 7850' 240 5720', 15000' EL.
 Set 100P @ 7120' re chkr. 1/2" perfs 7296-7310'
 Perfs @ 5' 5"
 Squeezed perf @ 5725' W/400 sx.
 PR 5720'
 Perfs Blinberry 5448-52' 5466-30', 5480-90',
 5504-20', 5566-11', 5578-8', 5600-03', 5614-
 18', 5651-55', 5663-67', 5688-95' W/2 82P
 Ac. 2000 gals.
 Frac 30 000 gals oil + 10 000# sd. 5448-5695'.

2A Fowler Upper Yeso

Inside Fowler
Drinkard

Need Plat

NEW MEXICO OIL CONSERVATION COMMISSION
WELL LOCATION AND ACREAGE DEDICATION PLAT

Form C-102
Supersedes C-128
Effective 1-4-65

All distances must be from the outer boundaries of the Section.

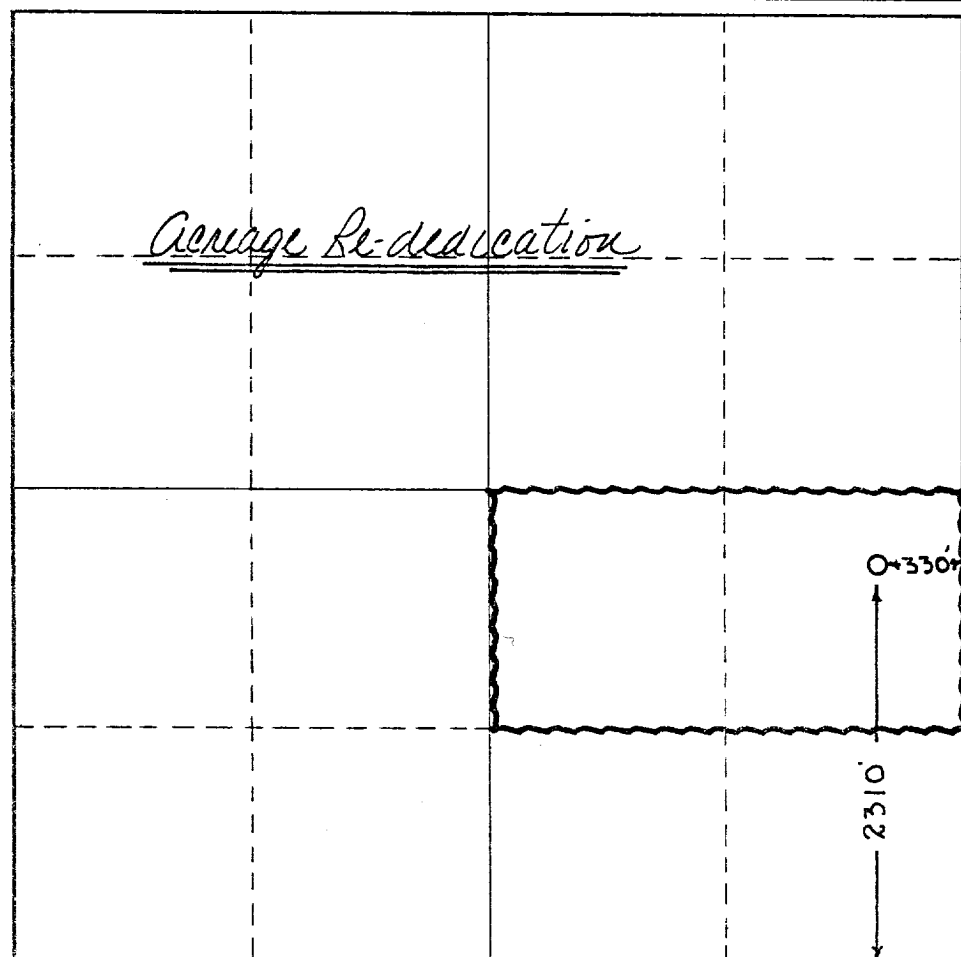
Operator <i>Pan American Petroleum</i>		Lease <i>South Mattie Unit</i>		Well No. <i>13</i>
Unit Letter <i>I</i>	Section <i>22</i>	Township <i>24-S</i>	Range <i>37-E</i>	County <i>Lea</i>
Actual Footage Location of Well: <i>2310</i> feet from the <i>South</i> line and <i>330</i> feet from the <i>East</i> line				
Ground Level Elev. <i>3248' RDB</i>	Producing Formation <i>Blindery</i>	Pool <i>Lower Blindery</i>	Dedicated Acreage: <i>80</i> Acres	

1. Outline the acreage dedicated to the subject well by colored pencil or hachure marks on the plat below.
2. If more than one lease is dedicated to the well, outline each and identify the ownership thereof (both as to working interest and royalty).
3. If more than one lease of different ownership is dedicated to the well, have the interests of all owners been consolidated by communitization, unitization, force-pooling, etc?

☒ Yes ☐ No If answer is "yes," type of consolidation _____

If answer is "no," list the owners and tract descriptions which have actually been consolidated. (Use reverse side of this form if necessary.) _____

No allowable will be assigned to the well until all interests have been consolidated (by communitization, unitization, forced-pooling, or otherwise) or until a non-standard unit, eliminating such interests, has been approved by the Commission.



CERTIFICATION

I hereby certify that the information contained herein is true and complete to the best of my knowledge and belief.

Name Original Signed By:
V. E. STALEY

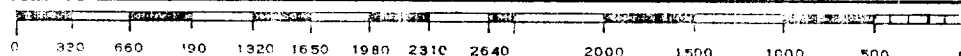
Position
Circ. Supt
Company
Pan American Petros. Corp.
Date
March 25, 1965

I hereby certify that the well location shown on this plat was plotted from field notes of actual surveys made by me or under my supervision, and that the same is true and correct to the best of my knowledge and belief.

Date Surveyed

Registered Professional Engineer and/or Land Surveyor

Certificate No.



NEW MEXICO OIL CONSERVATION COMMISSION
WELL LOCATION AND ACREAGE DEDICATION PLAT

Form C-102
Supersedes C-128
Effective 1-1-65

All distances must be from the outer boundaries of the Section.

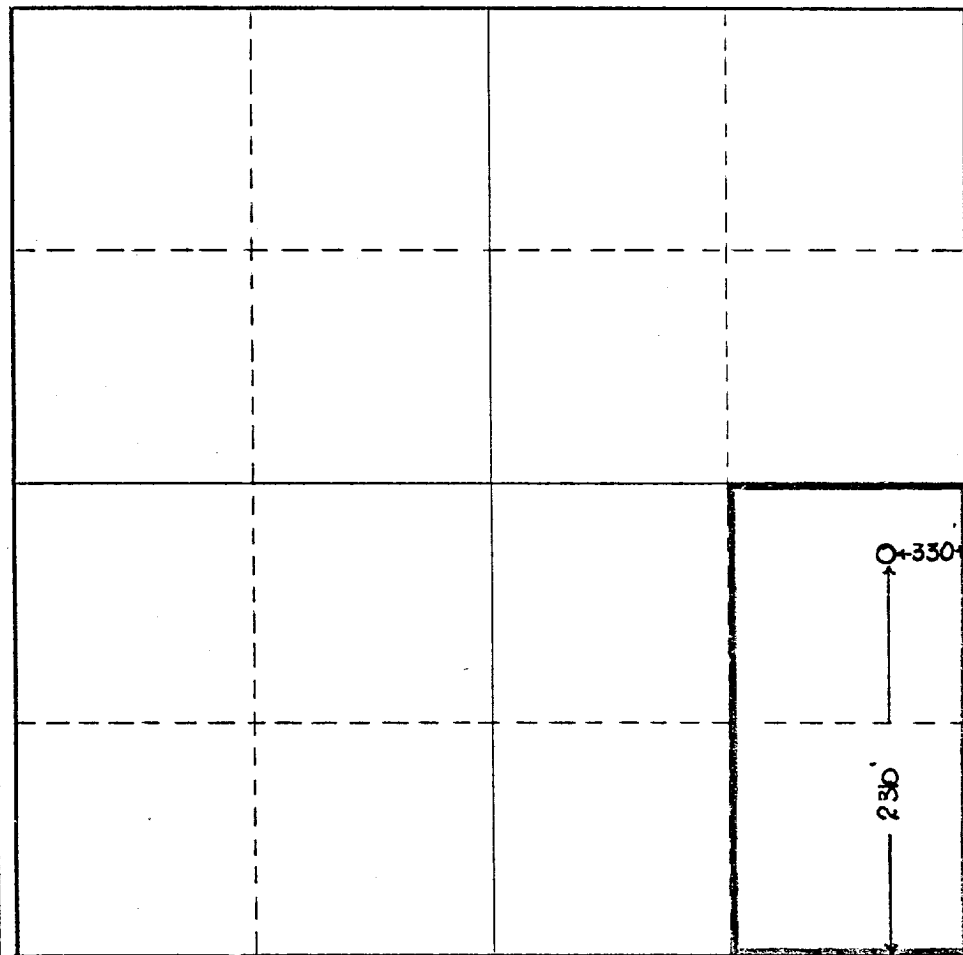
Operator <i>Am. American Petro. Corp.</i>		Lease <i>South Matney Unit</i>		Well No. <i>13</i>	
Unit Letter <i>I</i>	Section <i>22</i>	Township <i>24-S</i>	Range <i>37-E</i>	County <i>Lea</i>	
Actual Footage Location of Well: <i>2310</i> feet from the <i>South</i> line and <i>330</i> feet from the <i>East</i> line					
Ground Level Elev. <i>3248' RDB</i>	Producing Formation <i>Blinney</i>	Pool <i>Fowler Blinney</i>	Dedicated Acreage: <i>80</i> Acres		

- Outline the acreage dedicated to the subject well by colored pencil or hachure marks on the plat below.
- If more than one lease is dedicated to the well, outline each and identify the ownership thereof (both as to working interest and royalty).
- If more than one lease of different ownership is dedicated to the well, have the interests of all owners been consolidated by communitization, unitization, force-pooling, etc?

☒ Yes ☐ No If answer is "yes," type of consolidation _____

If answer is "no," list the owners and tract descriptions which have actually been consolidated. (Use reverse side of this form if necessary.) _____

No allowable will be assigned to the well until all interests have been consolidated (by communitization, unitization, forced-pooling, or otherwise) or until a non-standard unit, eliminating such interests, has been approved by the Commission.



CERTIFICATION

I hereby certify that the information contained herein is true and complete to the best of my knowledge and belief.

Name Original Signed By:
V. E. STALEY

Position
Area Supt

Company
Am. American Petro. Corp.

Date
2-1-65

I hereby certify that the well location shown on this plat was plotted from field notes of actual surveys made by me or under my supervision, and that the same is true and correct to the best of my knowledge and belief.

Date Surveyed

Registered Professional Engineer and/or Land Surveyor

Certificate No.

0 330 660 990 1320 1650 1980 2310 2640 2000 1500 1000 500 0