

UNITED STATES  
DEPARTMENT OF THE INTERIOR  
BUREAU OF LAND MANAGEMENT

N.M. Oil Cons. Division  
1625 N. French Dr.  
Hobbs, NM 88240

FORM APPROVED  
Budget Bureau No. 1004-0135  
Expires: March 31, 1993

**SUNDRY NOTICES AND REPORTS ON WELLS**

Do not use this form for proposals to drill or to deepen or reentry to a different reservoir.  
Use "APPLICATION FOR PERMIT—" for such proposals

**SUBMIT IN TRIPLICATE**

1. Type of Well

☒ Oil Well ☐ Gas Well ☐ Other

2. Name of Operator

Chevron USA, Inc.

3. Address and Telephone No.

15 Smith Rd., Midland, TX 79705 (915) 687-7100

4. Location of Well (Footage, Sec., T., R., M., or Survey Description)

Unit Letter G, 1980 FNL, 1980 FEL  
Sec. 26, Township 24-S, Range 37E

7. If Unit or CA, Agreement Designation  
G.L. Erwin "B" FED (NCT-1

8. Well Name and No.

2

9. API Well No.  
30-025-11234

10. Field and Pool, or Exploratory Area

11. County or Parish, State

Lea, New Mexico

12. CHECK APPROPRIATE BOX(s) TO INDICATE NATURE OF NOTICE, REPORT, OR OTHER DATA

TYPE OF SUBMISSION

- ☒ Notice of Intent  
☐ Subsequent Report  
☐ Final Abandonment Notice

TYPE OF ACTION

- ☒ Abandonment  
☐ Recompletion  
☐ Plugging Back  
☐ Casing Repair  
☐ Altering Casing  
☐ Other
- ☐ Change of Plans  
☐ New Construction  
☐ Non-Routine Fracturing  
☐ Water Shut-Off  
☐ Conversion to Injection  
☐ Dispose Water

(Note: Report results of multiple completion on Well Completion or Recompletion Report and Log form.)

13. Describe Proposed or Completed Operations (Clearly state all pertinent details, and give pertinent dates, including estimated date of starting any proposed work. If well is directionally drilled, give subsurface locations and measured and true vertical depths for all markers and zones pertinent to this work.)

1. Notify BLM 24 hrs prior to MI & RU.
2. Set 7" CIBP @ 3200, Spot 25 Sx plug 3200-3100 (Queen, Grayburg) WOC Tag.
3. Displace hole w/MLF, 9.5# Brine w/25# Gel P/BBL.
4. Spot 40 Sx plug 2600-2400 (B-Salt, Yates) WOC Tag.
5. Spot 40 Sx plug 1100-900 (9 5/8" shoe, T-Salt) WOC Tag.
6. Perf 4 holes @ 250', Sqz 150 Sx plug 250-Surf 7" X 9 5/8" X 13 3/8" Csgs (13 3/8" shoe) WOC Tag.
7. Install Dry Hole Marker.

APPROVED FOR 3 MONTH PERIOD

ENDING 3/023/03

APPROVED

DEC 20 2002

GARY GOURLEY  
PETROLEUM ENGINEER

14. I hereby certify that the foregoing is true and correct

Signed

*D. B. [Signature]*

Title

HES Specialist

Date

12/13/2002

(This space for Federal or State office use)

Approved by

Conditions of approval, if any:

Title

Date

Title 18 U.S.C. Section 1001, makes it a crime for any person knowingly and willfully to make to any department or agency of the United States any false, fictitious or fraudulent statements or representations as to any matter within its jurisdiction.

GWW

\*See Instruction on Reverse Side

# PLUGGING & ABANDONMENT WORKSHEET

(3 STRING CSNG)

OPERATOR CHEVRON USA INC  
LEASE NAME G.L. EERWIN "B" FGD (NCT-1)  
WELL # 2

SECT 26 TWN 24-S RNG 37-E  
FROM 1980 NSL 1980 EWL         
TD        FORMATION @ TD QUEEN  
PBDT        FORMATION @ PBDT GRAYBURG

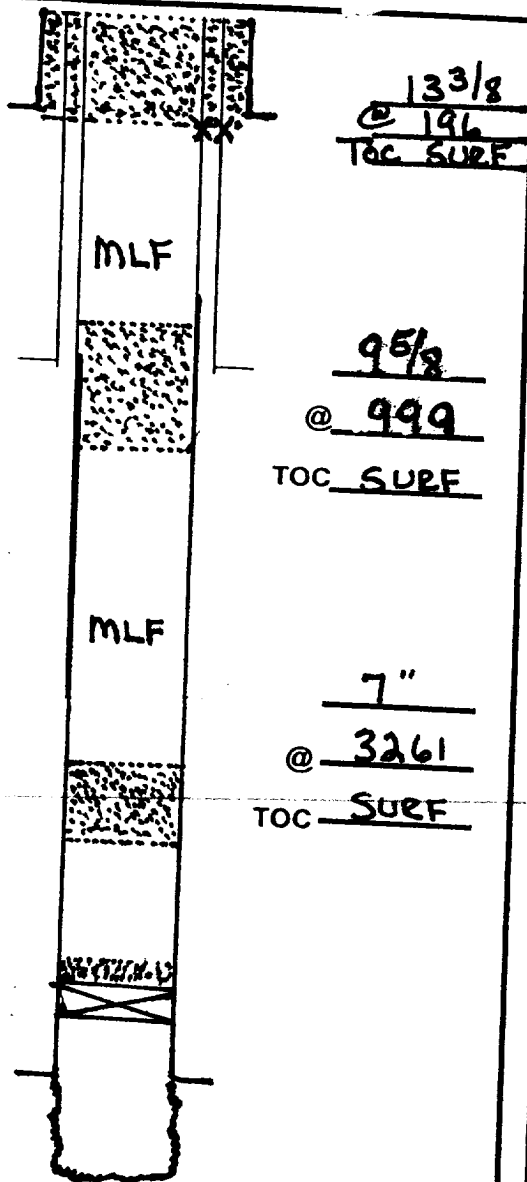
	SIZE	SET @	TOC	TOC DETERMINED BY
SURFACE	13 3/8	196	SURF	CIRC
INTMED 1	9 5/8	999	SURF	CIRC
INTMED 2				
PROD	7"	3261	SURF	CIRC.

	SIZE	TOP	BOT	TOC	DETERMINED BY
LINER 1					
LINER 2					

	CUT & PULL	TOP - BOTTOM
INTMED 1		PERFS
INTMED 2		
PROD		OPENHOLE 3261- 3475

\*REQUIRED PLUGS DISTRICT

	PLUG	TYPE PLUG	SACKS CEMENT	DEPTH
RUSTLER (ANHYD)	*			
YATES	1	CIBP	25	3200
QUEEN	2	B-SALT	40	2600
GRAYBURG	3	9 5/8 S	40	1100
SAN ANDRES	4	13 3/8 S	150	250
CAPTAN REEF	*			
DELAWARE				
BELL CANYON				
CHERRY CANYON				
BRUSHY CANYON				
BONE SPRING				
GLORIETA	*			
BLINBRY				
TUBB				
DRINKARD				
ABO				
WC				
PENN				
STRAWN				
ATOKA				
MORROW				
MISS				
DEVONIAN				



TD 3475