

UNITED STATES
DEPARTMENT OF THE INTERIOR
BUREAU OF LAND MANAGEMENT

FORM APPROVED
Budget Bureau No. 1004-0135
Expires: September 30, 1990

SUNDRY NOTICES AND REPORTS ON WELLS

Do not use this form for proposals to drill or to deepen or reentry to a different reservoir.
Use "APPLICATION FOR PERMIT—" for such proposals

SUBMIT IN TRIPLICATE

1. Type of Well

☐ Oil Well ☒ Gas Well ☐ Other

2. Name of Operator

Texaco Exploration & Production Inc.

3. Address and Telephone No.

P.O. Box 730, Hobbs, NM 88241-0730 (505) 393-7191

4. Location of Well (Footage, Sec., T., R., M., or Survey Description)

Unit Letter J, 1980 FSL, 1980 FEL,
Section 26, T-24-S, R-37-E

5. Lease Designation and Serial No.

#NM-14218

6. If Indian, Allottee or Tribe Name

7. If Unit or CA, Agreement Designation

8. Well Name and No.

C.C. Fristoe B Fed NCT-2

9. API Well No.

30-025-11237

10. Field and Pool, or Exploratory Area

Jalmat Yates

11. County or Parish, State

Lea County, NM

12. CHECK APPROPRIATE BOX(s) TO INDICATE NATURE OF NOTICE, REPORT, OR OTHER DATA

TYPE OF SUBMISSION

- ☒ Notice of Intent
☐ Subsequent Report
☐ Final Abandonment Notice

TYPE OF ACTION

- ☒ Abandonment
☐ Recompletion
☐ Plugging Back
☐ Casing Repair
☐ Altering Casing
☐ Other

- ☐ Change of Plans
☐ New Construction
☐ Non-Routine Fracturing
☐ Water Shut-Off
☐ Conversion to Injection

(Note: Report results of multiple completion on Well Completion or
Recompletion Report and Log form.)

13. Describe Proposed or Completed Operations (Clearly state all pertinent details, and give pertinent dates, including estimated date of starting any proposed work. If well is directionally drilled, give sub-surface locations and measured and true vertical depths for all markers and zones pertinent to this work.)*

PROPOSED PROCEDURE

- 1) Inform BLM and OCD 24 hours prior to commencement of plugging.
- 2) MIRU, Install BOP. Rig up wireline.
- 3) Perf 2 squeeze holes at 1100'. TIH w/ work string and tag CIBP at 2500'
- 4) Load hole with salt gel mud; 10# brine and 25# gel/ Bbl. Pump 50', 10 s class H cement on top of CIBP at 2500'.
- 5) Establish circulation through squeeze perfs and fill casing and annulus with 405 sx. This includes 10% extra cement. Adjust volumes if needed.
- 6) POH. Fill casing and annulus from surface with 1" tubing if necessary.
- 7) Cut off wellhead and install dry hole marker. Clean location.
- 8) Restore surface as per federal regulations.

(see reverse)

14. I hereby certify that the foregoing is true and correct

Signed St Johnson

Title Engr. Asst.

Date 7/24/91

(This space for Federal or State official use)

Approved by David A. Glass
Conditions of approval, if any:

Title

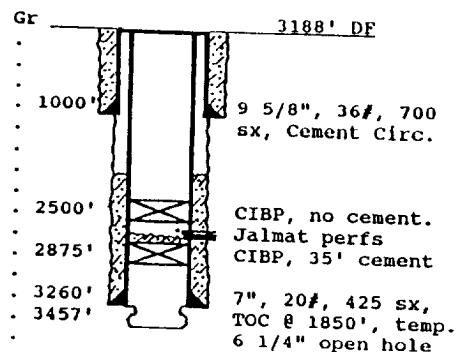
Date 8-5-91

WELL DATA SHEET

PO-113
(5/91)

OPERATOR: Texaco E&P Inc. Lease: C.C. Fristoe B Fed NCT-2 #1
 FOOTAGE LOCATION: 1980 FSLx1980 FEL Sec./Twn/Rng: Unit J, Sec 26, T-24-S, R-37-E
Lea County, New Mexico

SCHEMATIC



Tops:
 Salt 1045'-2302'
 Yates 2553'
 Queen 3260'

TABULAR DATA

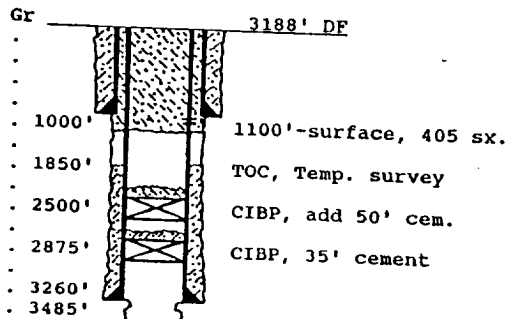
Surface Casing: Set at 1000'
 Size 9 5/8, 36# Cemented with 700 sx.
 TOC surface ' determined by circulation
 Hole Size 12 1/4" Comp. Date 8-14-49
 Intermediate casing: Set at _____
 Size NONE Cemented with _____ sx.
 TOC _____ ' determined by _____
 Hole Size *** Jalmat perfs: 2565' - 2785'***
 Production Casing: Set at 3260'
 Size 7", 20# Cemented with 425 sx.
 TOC 1850 ' determined by Temp log
 Hole Size 8 3/4"
 Open Hole Interval:
3260' to 3457' Size 6 1/4"
 Nitro Shot 140 Qts LNG, 3359' - 3429'

PLUG AND ABANDON DATA

PO-113
(5/91)

OPERATOR: Texaco E&P Inc. LEASE: C.C. Fristoe B Federal NCT-2 #1
 FOOTAGE LOCATION: 1980 FSLx1980 FEL Sec./Twn/Rng: Unit J, Sec 26, T-24-S, R-37-E
Casing integrity tested 5-25-83, 600 psi/15 minutes - OK Lea County, New Mexico

SCHEMATIC



PLUGGING DATA

Surface Plug:
 Size 1100'-Surf. Cemented with 405 sx.
 Includes 10% extra cement volume.
 Class 'H' Cement, 1.18 cu ft/ sx
 Intermediate Plug(s):
 Size None Cemented with _____ sx.
 Class 'H' cement, 1.18 cu ft/ sx
 Surface plug covers top of salt section.
 CIBPs cover base of salt section.
 Producing Zone Plugs:
 Size CIBP, 35' Cemented with 7 sx.

AUG 1