

UNITED STATES
DEPARTMENT OF THE INTERIOR
BUREAU OF LAND MANAGEMENT

SUNDRY NOTICES AND REPORTS ON WELLS

Do not use this form for proposals to drill or to deepen or reentry to a different reservoir.
Use "APPLICATION FOR PERMIT—" for such proposals

SUBMIT IN TRIPLICATE

Type of Well
☒ Oil Well ☐ Gas Well ☐ Other

Name of Operator
Texaco Exploration & Production Inc.

Address and Telephone No.
P.O. Box 730, Hobbs, NM 88241-0730 (505) 393-7191

Location of Well (Footage, Sec., T., R., M., or Survey Description)
Unit Letter I, 1980 FSL, 660 FEL

Section 6, T-24-S, R-37-E

FORM APPROVED
Budget Bureau No. 1004-0135
Expires: September 30, 1990

5. Lease Designation and Serial No.

Fed #NM-14218

6. If Indian, Allottee or Tribe Name

7. If Unit or CA, Agreement Designation

8. Well Name and No.

O.C. Fristoe B Fed NCT-2 #2

9. API Well No.

30-025-11239

10. Field and Pool, or Exploratory Area

Langlie Mattix

11. County or Parish, State

Lea County, NM

CHECK APPROPRIATE BOX(S) TO INDICATE NATURE OF NOTICE, REPORT, OR OTHER DATA

TYPE OF SUBMISSION

- ☒ Notice of Intent
☐ Subsequent Report
☐ Final Abandonment Notice

TYPE OF ACTION

- ☒ Abandonment
☐ Recompletion
☐ Plugging Back
☐ Casing Repair
☐ Altering Casing
☐ Other
☐ Change of Plans
☐ New Construction
☐ Non-Routine Fracturing
☐ Water Shut-Off
☐ Conversion to Injection

(Note: Report results of multiple completion on Well Completion or
Recompletion Report and Log form.)

12. Describe Proposed or Completed Operations (Clearly state all pertinent details, and give pertinent dates, including estimated date of starting any proposed work. If well is directionally drilled,
give subsurface locations and measured and true vertical depths for all markers and zones pertinent to this work.)*

PROPOSED PROCEDURE

- 1) Inform BLM and OCD 24 hours prior to commencement of plugging.
- 2) MIRR. NU BOP. Remove rods and pump. Install BOP and pull tubing.
- 3) TTH with work string, bit and 7" casing scraper. Clean hole to TD.
- 4) By wireline, set CIBP at 3225'.
- 5) Load hole with salt gel mud; 10# brine and 25# gel/ Bbl. POH.
- 6) GIH with work string. Pump 50', 10 sx, cement on top of CIBP. Move up hole and pump 100' plug, 20 sx, from 2300'-2400'.
- 7) Move up hole. Pump 300' plug, 60 sx, from 1004'-1304' and 20 sx from 100' to the surface. Lay down work string and ND BOP.
- 8) Cut off wellhead and install dry hole marker. Clean location.
- 9) Restore surface as per Federal regulations.

(see reverse)

14. I hereby certify that the foregoing is true and correct

Signed W. Johnson Title Engr. Asst.

Date 7/24/91

(This space for Federal or State office use)

Approved by David R. Glass Title Supervisor
Conditions of Approval, if any:

Date 8.5.91

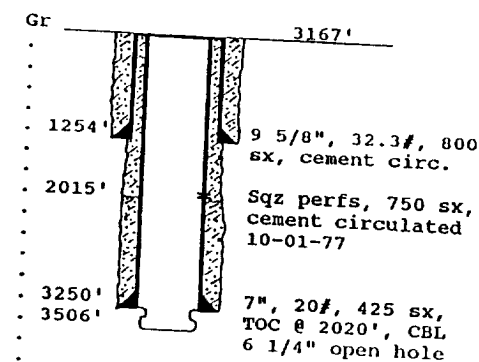
Title 18 U.S.C. Section 1001, makes it a crime for any person knowingly and willfully to make to any department or agency of the United States any false, fictitious or fraudulent statements or representations as to any matter within its jurisdiction.

*See Instruction on Reverse Side

WELL DATA SHEET

PO-113
(5/91)OPERATOR: Texaco Inc.Lease: C.C. Fristoe B Fed NCT-2 #2FOOTAGE LOCATION: 1980 FSLx 660 FELSec./Twn/Rng: Unit I, Sec 26, T-24-S, R-37-ELea County, New Mexico

SCHEMATIC



Tops:
Salt 1237'-2344'
Yates 2489'
Queen 3250'

TABULAR DATA

Surface Casing: Set at 1250'

Size 9 5/8", 32.3# Cemented with 800 sx.

TOC surface ' determined by circulation

Hole Size 12 1/4" Comp. Date 11-13-49

Intermediate casing: Set at

Size NONE Cemented with sx.

TOC ' determined by

Hole Size Annulus squeezed, 750 sx, 10-01-77

Production Casing: Set at 3250'

Size 7", 20# Cemented with 425 sx.

TOC 2020 ' determined by Bond log

Hole Size 8 3/4"

Open Hole Interval:

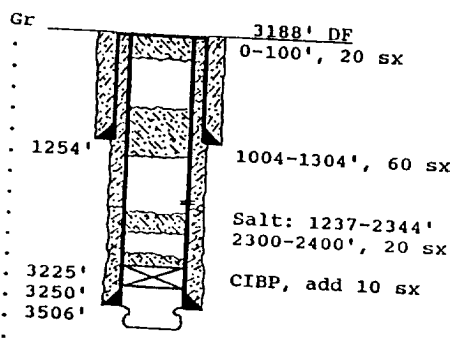
3250' to 3506' Size 6 1/4"

Nitro Shot 200 Qts SOWE #1, 3359' - 3429'

PLUG AND ABANDON DATA

PO-113
(5/91)OPERATOR: Texaco Inc.LEASE: C.C. Fristoe B Federal NCT-2 #2FOOTAGE LOCATION: 1980 FSLx 660 FELSec./Twn/Rng: Unit I, Sec 26, T-24-S, R-37-EAnnulus squeezed w/ 750 sx on 10-1-77, tested 1000#, 1 hrLea County, New Mexico

SCHEMATIC



PLUGGING DATA

Surface Plug:

Size 100'-Surf. Cemented with 20 sx.

Class 'H' Cement, 1.18 cu ft/ sx

Intermediate Plug(s):

Size 1004'-1304' Cemented with 60 sx.

Class 'H' cement, 1.18 cu ft/ sx
(Also covers top of salt section)

Producing Zone Plugs:

Size CIBP, 50' Cemented with 10 sx.

2300'-2400' Cemented with 20 sx.

(Covers base of salt section.)