

PLUGGING PROCEDURE
WESTATES FEDERAL NO. 6

LOCATION: 330' FNL & 330' FWL
Section 1, Township 25 South, Range 37 East
Lea County, New Mexico

FIELD: North Justice

ELEVATIONS: 3135' GL, 3146' KB, TD = 8466'; PBD = 7835'

SPUD DATE: August 12, 1961

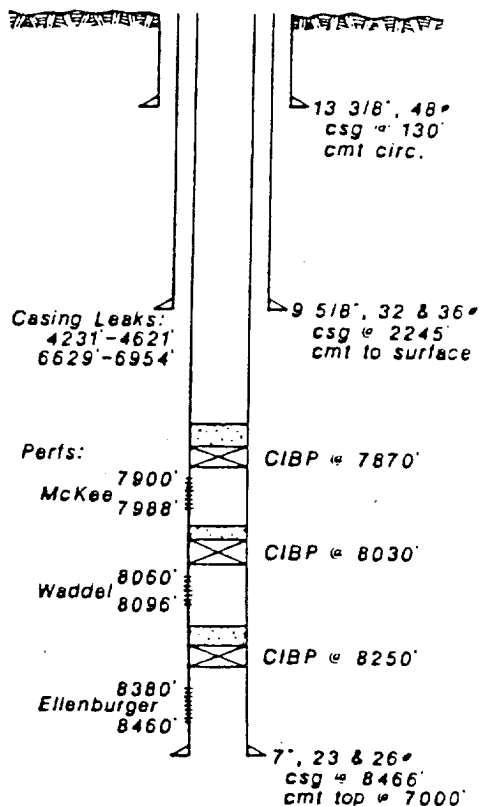
COMPLETION DATE: September 26, 1961

INITIAL COMPLETION: Perforated Ellenberger from 8380-8460' and McKee from 7900-7910', 7934-7938' and 7958-7988' w/2 SPF.

WORKOVERS: 7/06/63 - Perforate Waddel intervals 8060-8065', 8070-8074', and 8089-8096' w/2 SPF. Acidize w/500 gallons mud acid, reran dual tubing strings. Put Ellenberger zone on pump.

2/05/68 - Shut-in (T&A).

2/17/74 - Set CIBP above Ellenberger at 8250' with 35' cement on top of plug. Set CIBP @ 8030' with 20' cement on top of plug. Set CIBP at 7870' with 35' cement on top of plug.



1. Move in, rig up service unit.
2. Nipple down wellhead, nipple up BOP.
3. Pick up 2-3/8" work string and trip in hole to 7000'. Displace hole with 9.0 ppg brine.
4. Pump 125 sacks of Class H Neat cement and displace cement with 25 barrels of 9.0 ppg brine.
5. Pull tubing up to 6200'.
6. Close backside and squeeze 8 barrels of cement into casing leak by pumping down tubing.
7. Pull tubing up to 4700'. SJS
8. Pump 150 sacks of Class H Neat cement down tubing and displace with 16.6 barrels of 9.0 ppg brine.