

SOUTH EAST NEW MEXICO OIL FIELD LEAKAGE TL

Operator National Cooperative Refinery Assoc.			Lease Westates Federal			Well No. 8	
Location of Well	Unit E	Sec I	Twp 25S	Rge 37E	County Lea		
Name of Reservoir or Pool			Type of Prod (Oil or Gas)	Method of Prod Flow, Art Lift	Prod. Medium (Tbg or Csg)	Choke Size	
Upper Compl	North Justis (Montoya)		Oil	Pump	Tbg.	-	
Lower Compl	North Justis (McKee)		Oil	Shut-in	Tbg.	-	

FLOW TEST NO. 1

Both zones shut-in at (hour, date): 2:00 PM May 11, 1970

	Upper Completion	Lower Completion
Well opened at (hour, date): 8:00 AM May 12, 1970		
Indicate by (X) the zone producing.....	X	-
Pressure at beginning of test.....	75	0
Stabilized? (Yes or No).....	Yes	Yes
Maximum pressure during test.....	75	0
Minimum pressure during test.....	35	0
Pressure at conclusion of test.....	35	0
Pressure change during test (Maximum minus Minimum).....	40	0
Was pressure change an increase or a decrease?.....	decrease	-
Well closed at (hour, date): 8:00 AM May 13, 1970	Total Time On Production 24 hrs.	
Oil Production During Test: 8 bbls; Grav. 38°	Gas Production 6 MCF; GOR 750	
Remarks Lower completion (McKee) dead and off proration schedule.		

FLOW TEST NO. 2

	Upper Completion	Lower Completion
Well opened at (hour, date): 7:00 AM May 14, 1970		
Indicate by (X) the zone producing.....	-	X
Pressure at beginning of test.....	70	0
Stabilized? (Yes or No).....	Yes	Yes
Maximum pressure during test.....	75	0
Minimum pressure during test.....	70	0
Pressure at conclusion of test.....	75	0
Pressure change during test (Maximum minus Minimum).....	5	0
Was pressure change an increase or a decrease?.....	Increase	-
Well closed at (hour, date): 5:00 PM May 14, 1970	Total time on Production 10 hrs.	
Oil Production During Test: 0 bbls; Grav. -	Gas Production 0 MCF; GOR -	
Remarks Lower Completion (McKee) dead and off proration schedule.		

I hereby certify that the information herein contained is true and complete to the best of my knowledge.

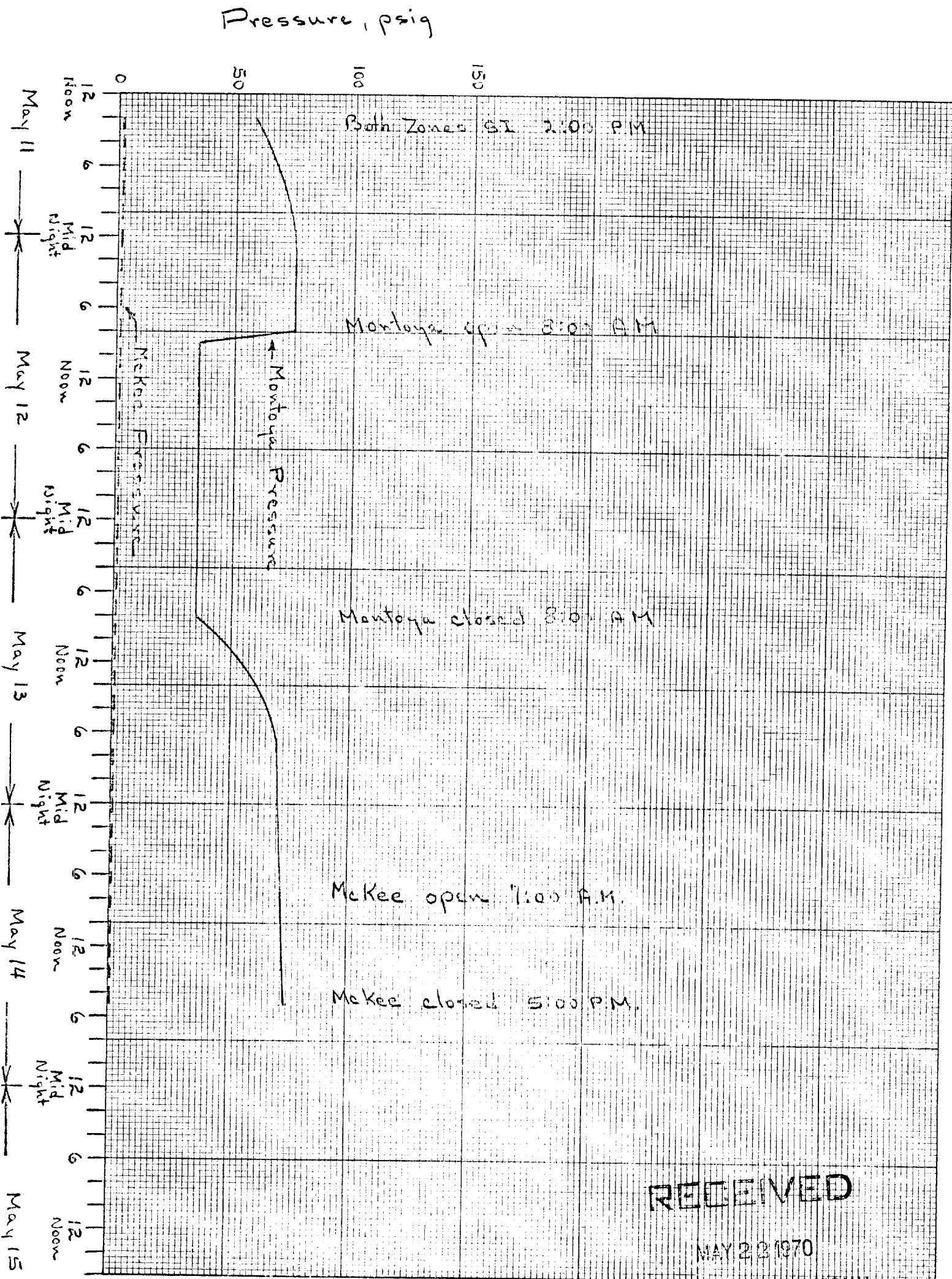
Approved MAY 28 1970 19
New Mexico Oil Conservation Commission

Operator National Cooperative Refinery Assoc.
By B. J. Hinson
Title Dist. Prod. Supt.
Date 5-18-70

By [Signature]
Title SUPERVISOR DISTRICT

4. For Flow Test No. 1, one zone of the dual completion shall be produced at the normal rate of production while the other zone remains shut-in. Such test shall be continued until the flowing wellhead pressure has become stabilized and for a minimum of two hours thereafter, provided however, that the flow test need not continue for more than 24 hours.

8. The results of the above-described tests shall be filed in triplicate within 15 days after completion of the test. Tests shall be filed with the appropriate District Office of the New Mexico Oil Conservation Commission on Southeast New Mexico Packer Leakage Test Form Revised 11-1-58, together with the original pressure recording gauge charts with all the deadweight pressures which were taken indicated thereon. In lieu of filing the aforesaid charts, the operator may construct a pressure versus time curve for each zone of each test, indicating thereon all pressure changes which may be reflected by the gauge charts as well as all deadweight pressure readings which were taken. If the pressure curve is submitted, the original chart must be permanently filed in the operator's office. Form C-116 shall also accompany the Packer Leakage Test Form when the test period coincides with a gas-oil ratio test period.



MAY 22 1970

OIL CONSERVATION COM.
 HOBBS, N. M.