

NEW MEXICO OIL CONSERVATION COMMISSION
SOUTHEAST NEW MEXICO PACKER LEAKAGE TEST

Operator		Continental Oil Co. Conoco Inc			Lease		State A-2		Well No.		2	
Location of Well		Unit	Sec	Twp	Rge	County		Lea				
			2	25S	37E							
		Name of Reservoir or Pool		Type of Prod (Oil or Gas)	Method of Prod Flow, Art Lift		Prod. Medium (Tbg or Csg)		Choke Size			
Upper Compl		Justis Blinbury		Oil	Flow		Csg.		OPEN			
Lower Compl		Justis Drinkard		SI	—		—		—			

FLOW TEST NO. 1

Both zones shut-in at (hour, date): 9:00 A.M. 7/23/79

Well opened at (hour, date):	9:00 A.M. 7/24/79	Upper Completion	Lower Completion
Indicate by (X) the zone producing.....		X	
Pressure at beginning of test.....		300	350
Stabilized? (Yes or No).....		No	No
Maximum pressure during test.....		150	350
Minimum pressure during test.....		50	160
Pressure at conclusion of test.....		300	200
Pressure change during test (Maximum minus Minimum).....		100	190
Was pressure change an increase or a decrease?.....		DECREASE	DECREASE
Well closed at (hour, date):	9:00 A.M. 7/25/79	Total Time On Production	24 HRS.
Oil Production During Test:	9 bbls; Grav. _____	Gas Production During Test	MCF; GOR _____
Remarks Justis Blinbury produced 9 BO in 5 hrs. the intermitter valve on the flowline malfunction. Normal Production is 27 BO in 24 hrs. OBVIOUS LEAK ON THE JUSTIS DRINKARD.			

FLOW TEST NO. 2

Well opened at (hour, date):	3:30 A.M. 7/26/79	Upper Completion	Lower Completion
Indicate by (X) the zone producing.....			X
Pressure at beginning of test.....		340	250
Stabilized? (Yes or No).....		YES	No
Maximum pressure during test.....		340	250
Minimum pressure during test.....		340	0
Pressure at conclusion of test.....		340	0
Pressure change during test (Maximum minus Minimum).....		NONE	250
Was pressure change an increase or a decrease?.....		NONE	DECREASE
Well closed at (hour, date)	12:00 NOON 7/27/79	Total time on Production	24 Hrs.
Oil Production During Test:	0 bbls; Grav. _____	Gas Production During Test	0 MCF; GOR _____
Remarks Justis Drinkard - SI - WELL WOULD NOT FLOW.			

I hereby certify that the information herein contained is true and complete to the best of my knowledge.

AUG 2 1979

Approved _____ 19
New Mexico Oil Conservation Commission

Operator Continental Oil Co Conoco Inc
By Charlie O. Fransto

Original Signed by
Jerry Sexton
Title Dist 1, Supv.

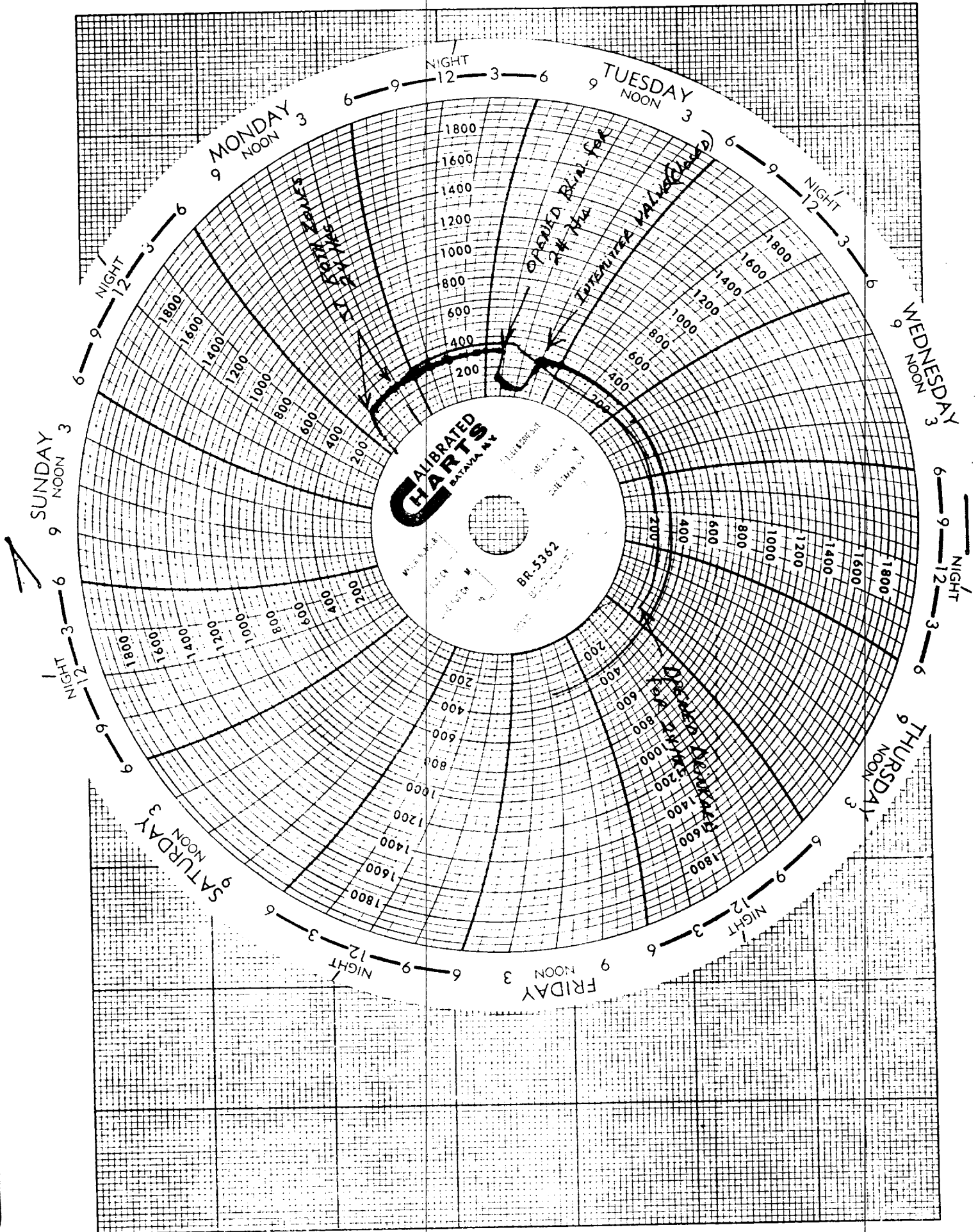
Title Production Technician
Date 7/27/79

RECEIVED
JUL 30 1973
O.C.D. HOBBS, OFFICE

SOUTHEAST NEW MEXICO PACKER LEAKAGE TEST INSTRUCTIONS

1. A packer leakage test shall be commenced on each multiple completed well within seven days after actual completion of the well, and annually thereafter as prescribed by the order authorizing the multiple completion. Such tests shall also be commenced on all multiple completions within seven days following recompletion and/or chemical or fracture treatment, and whenever remedial work has been done on a well during which the packer or the tubing have been disturbed. Tests shall also be taken at any time that communication is suspected or when requested by the Commission.
2. At least 72 hours prior to the commencement of any packer leakage test, the operator shall notify the Commission in writing of the exact time the test is to be commenced. Offset operators shall also be so notified.
3. The packer leakage test shall commence when both zones of the dual completion are shut-in for pressure stabilization. Both zones shall remain shut-in until the well-head pressure in each has stabilized and for a minimum of two hours thereafter, provided however, that they need not remain shut-in more than 24 hours.
4. For Flow Test No. 1, one zone of the dual completion shall be produced at the normal rate of production while the other zone remains shut-in. Such test shall be continued until the flowing wellhead pressure has become stabilized and for a minimum of two hours thereafter, provided however, that the flow test need not continue for more than 24 hours.

5. Following completion of Flow Test No. 1, the well shall again be shut-in, in accordance with Paragraph 3 above.
6. Flow Test No. 2 shall be conducted even though no leak was indicated during Flow Test No. 1. Procedure for Flow Test No. 2 is to be the same as for Flow Test No. 1 except that the previously produced zone shall remain shut-in while the previously shut-in zone is produced.
7. All pressures, throughout the entire test, shall be continuously measured and recorded with recording pressure gauges, the accuracy of which must be checked with a deadweight tester at least twice, once at the beginning and once at the end, of each flow test.
8. The results of the above-described tests shall be filed in triplicate within 15 days after completion of the test. Tests shall be filed with the appropriate District Office of the New Mexico Oil Conservation Commission on Southeast New Mexico Packer Leakage Test Form Revised 11-1-58, together with the original pressure recording gauge charts with all the deadweight pressures which were taken indicated thereon. In lieu of filing the aforesaid charts, the operator may construct a pressure versus time curve for each zone of each test, indicating thereon all pressure changes which may be reflected by the gauge charts as well as all deadweight pressure readings which were taken. If the pressure curve is submitted, the original chart must be permanently filed in the operator's office. Form C-116 shall also accompany the Packer Leakage Test Form when the test period coincides with a gas-oil ratio test period.



RECEIVED
JUL 30 1970
O.C.D. HOBBS, OFFICE