

Operator The Atlantic Refining Company			Lease Langlie Federal			Well No. 1	
Location of Well	Unit I	Sec 14	Twp 25-S	Rge 37-E	County Lee		
	Name of Reservoir or Pool		Type of Prod (Oil or Gas)	Method of Prod Flow, Art Lift	Prod. Medium (Tbg or Csg)	Choke Size	
Upper Compl	Klinchey		Oil	Art. Lift	Tbg.	- -	
Lower Compl	Tabb-Driskard		Shut-in Funding Temporarily Abandoned				

FLOW TEST NO. 1 ^{Effective May 3, 1966, The Atlantic Refining Company changed its name to Atlantic Richfield Company}

Both zones shut-in at (hour, date): 9:00 a.m., 2-1-65

Well opened at (hour, date): 9:00 a.m., 2-2-65

	Upper Completion	Lower Completion
Indicate by (X) the zone producing.....	<u>X</u>	
Pressure at beginning of test.....	<u>542</u>	<u>894</u>
Stabilized? (Yes or No).....	<u>No</u>	<u>Yes</u>
Maximum pressure during test.....	<u>542</u>	<u>897</u>
Minimum pressure during test.....	<u>60</u>	<u>896</u>
Pressure at conclusion of test.....	<u>65</u>	<u>897</u>
Pressure change during test (Maximum minus Minimum).....	<u>-482</u>	<u>-1</u>
Was pressure change an increase or a decrease?.....	<u>decrease</u>	<u>increase</u>
Well closed at (hour, date): <u>9:00 a.m., 2-3-65</u>	Total Time On Production <u>24 hours</u>	
Oil Production During Test: <u>34</u> bbls; Grav. <u>38.5</u> ;	Gas Production During Test <u>51</u>	MCF; GOR <u>1900</u>
Remarks <u>Tabb-Driskard side temporarily abandoned</u>		

FLOW TEST NO. 2

	Upper Completion	Lower Completion
Well opened at (hour, date):		
Indicate by (X) the zone producing.....		
Pressure at beginning of test.....		
Stabilized? (Yes or No).....		
Maximum pressure during test.....		
Minimum pressure during test.....		
Pressure at conclusion of test.....		
Pressure change during test (Maximum minus Minimum).....		
Was pressure change an increase or a decrease?.....		
Well closed at (hour, date)	Total time on Production	
Oil Production During Test: bbls; Grav. ;	Gas Production During Test	MCF; GOR
Remarks		

I hereby certify that the information herein contained is true and complete to the best of my knowledge.

Approved _____ 19 _____
New Mexico Oil Conservation Commission

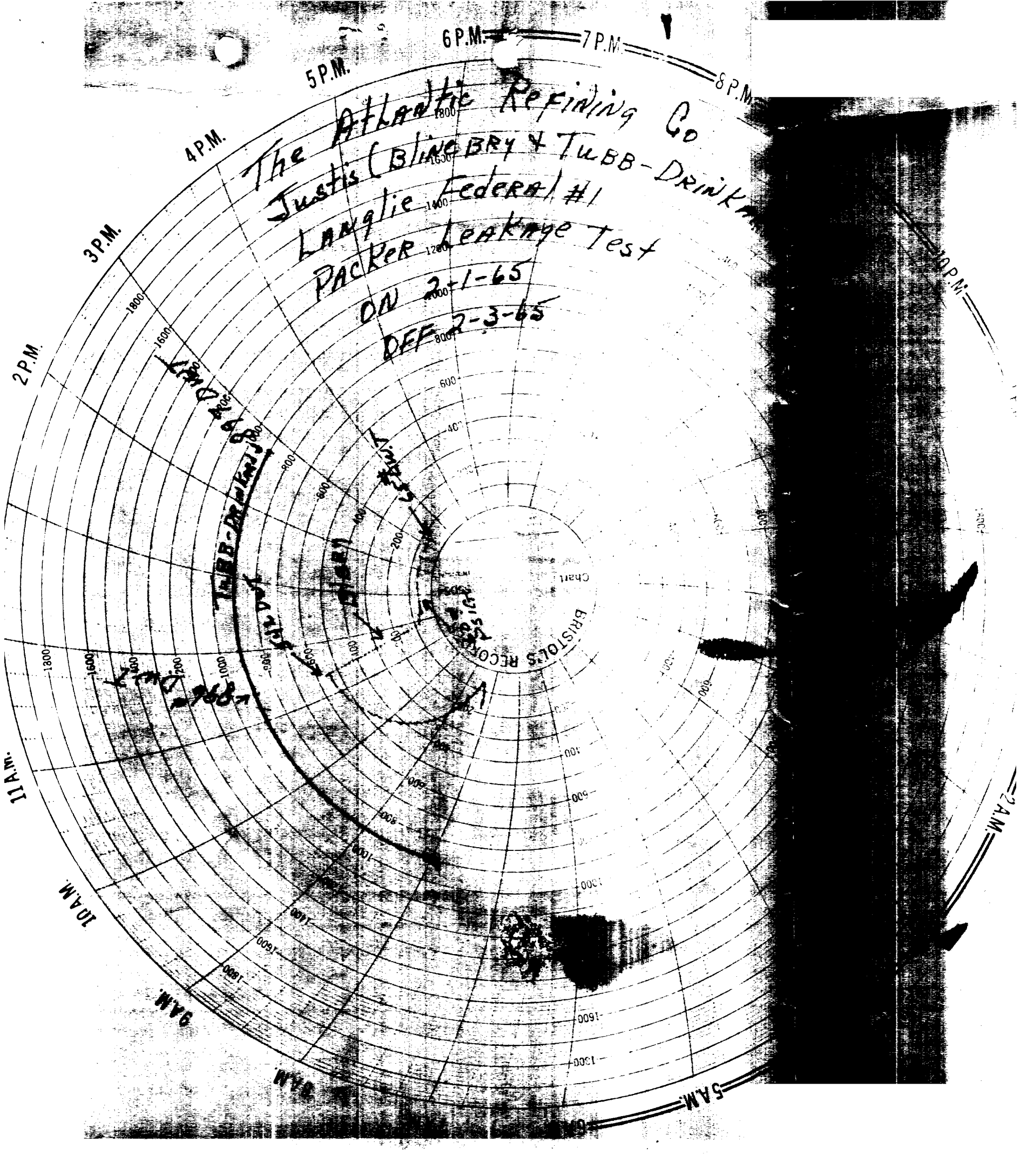
Operator The Atlantic Refining Company
By A. D. Klein
A. D. Klein
Title District Drilling & Production Supt.
Date 2-8-65

By _____
Title _____

SOUTHEAST NEW MEXICO PACKER LEAKS. TEST INSTRUCTIONS

1. A packer leakage test shall be commenced on each multiply completed well within seven days after actual completion of the well, and annually thereafter as prescribed by the order authorizing the multiple completion. Such tests shall also be commenced on all multiple completions within seven days following recompletion and/or chemical or fracture treatment, and whenever remedial work has been done on a well during which the packer or the tubing have been disturbed. Tests shall also be taken at any time that communication is suspected or when requested by the Commission.
2. At least 72 hours prior to the commencement of any packer leakage test, the operator shall notify the Commission in writing of the exact time the test is to be commenced. Offset operators shall also be so notified.
3. The packer leakage test shall commence when both zones of the dual completion are shut-in for pressure stabilization. Both zones shall remain shut-in until the well-head pressure in each has stabilized and for a minimum of two hours thereafter, provided however, that they need not remain shut-in more than 24 hours.
4. For Flow Test No. 1, one zone of the dual completion shall be produced at the normal rate of production while the other zone remains shut-in. Such test shall be continued until the flowing wellhead pressure has become stabilized and for a minimum of two hours thereafter, provided however, that the flow test need not continue for more than 24 hours.
5. Flow Test No. 1 shall be conducted on a well which has been shut-in in accordance with Paragraph 3 above.
6. Flow Test No. 2 shall be conducted even though no leak was indicated during Flow Test No. 1. Procedure for Flow Test No. 2 is to be the same as for Flow Test No. 1 except that the previously produced zone shall remain shut-in while the previously shut-in zone is produced.
7. All pressures, throughout the entire test, shall be continuously measured and recorded with recording pressure gauges, the accuracy of which must be checked with a deadweight tester at least twice, once at the beginning and once at the end of each flow test.
8. The results of the above-described tests shall be filed in triplicate within 15 days after completion of the test. Tests shall be filed with the appropriate District Office of the New Mexico Oil Conservation Commission or the nearest New Mexico Packer Leakage Test Form Revised 11-1-58, together with the original pressure recording gauge charts with all the deadweight pressures which were taken indicated thereon. In lieu of filing the original charts, the operator may construct a pressure versus time curve for each flow test, indicating thereon all pressure changes which may be reflected in the gauge charts as well as all deadweight pressure readings which are taken. If the pressure curve is submitted, the original gauge test of permanently filed in the operator's office. For each test, also complete the Packer Leakage Test Form when the test period coincides with a gas-oil ratio test period.

[illegible]



The Atlantic Refining Co
Justis (Bling Bry & Tubb-Drink)
Langlie Federal #1
Packer Leakage Test

ON 2-1-65
DEF 2-3-65

TUBB-DRINK
Langlie

BRISTOL'S RECORDERS