

NEW MEXICO OIL CONSERVATION COMMISSION
SOUTHEAST NEW MEXICO PACKER LEAKAGE TEST

Operator Producing Properties, Inc.			Lease Veeburg			Well No. 1	
Location of Well	Unit I	Sec 18	Twp 25S	Rge 37E	County Lea		
	Name of Reservoir or Pool		Type of Prod (Oil or Gas)	Method of Prod Flow, Art Lift	Prod. Medium (Tbg or Csg)	Choke Size	
Upper Compl	Yates - Jalnat		Gas	Flow	Csg.	3/4"	
Lower Compl	Seven Rivers - Jalnat		Oil	Art Lift	Tbg.	1"	

FLOW TEST NO. 1

Both zones shut-in at (hour, date): **8:00 A. M. (3/18/62)**

Well opened at (hour, date): **7:45 A. M. (3/20/62)** Upper Completion Lower Completion

Indicate by (X) the zone producing..... **I**

Pressure at beginning of test..... **200 chart** **20 chart**

Stabilized? (Yes or No)..... **Yes** **Yes**

Maximum pressure during test..... **200** **20**

Minimum pressure during test..... **190** **20**

Pressure at conclusion of test..... **200** **20**

Pressure change during test (Maximum minus Minimum)..... **10** **0**

Was pressure change an increase or a decrease?..... **Decrease** **-**

Well closed at (hour, date): **7:45 A. M. (3/21/62)** Total Time On Production **24 hours**

Oil Production Gas Production

During Test: **2.85** bbls; Grav. **32** ; During Test **187M** MCF; GOR **-**

Remarks **Results indicate that packer is separating two zones properly.**

FLOW TEST NO. 2

Well opened at (hour, date): **10:00 A. M. (3/21/62)** Upper Completion Lower Completion

Indicate by (X) the zone producing..... **I**

Pressure at beginning of test..... **200 chart** **40 chart**

Stabilized? (Yes or No)..... **Yes** **No**

Maximum pressure during test..... **200** **85**

Minimum pressure during test..... **180** **40**

Pressure at conclusion of test..... **195** **80**

Pressure change during test (Maximum minus Minimum)..... **20** **45**

Was pressure change an increase or a decrease?..... **Decrease** **Increase**

Well closed at (hour, date): **9:15 A. M. (3/22/62)** Total time on Production **23 hours 45 minutes.**

Oil Production Gas Production

During Test: **-** bbls; Grav. **-** ; During Test **47.021** MCF; GOR **-**

Remarks **Results indicate that packer is separating two zones properly.**

I hereby certify that the information herein contained is true and complete to the best of my knowledge.

Approved _____ 19
New Mexico Oil Conservation Commission

By _____
Title _____

Operator **Producing Properties, Inc.**
By **Paul Gregory**
Title **District Supt.**
Date **March 26, 1962**

1. The first step in the process is to identify the problem. This involves gathering information about the situation and determining what needs to be solved. Once the problem is identified, the next step is to develop a plan. This involves deciding on the best way to solve the problem and setting goals for the solution. Once a plan is developed, the next step is to implement the plan. This involves putting the plan into action and monitoring progress. Finally, the last step is to evaluate the results. This involves assessing the effectiveness of the solution and making adjustments as needed.

[illegible]

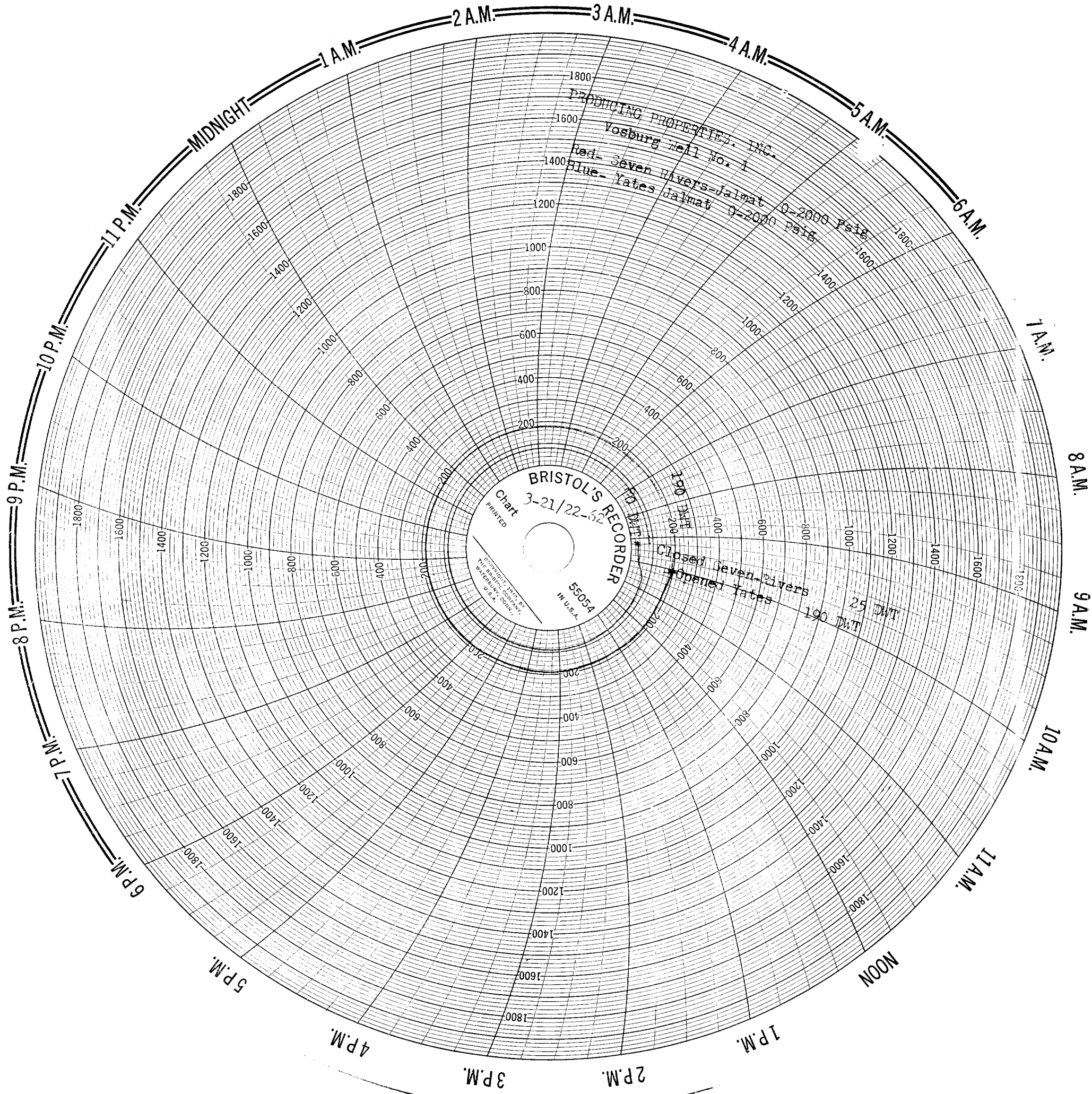
* Refer to the above referenced pages with the following information:

1. The original pressure recording, as shown in the
2. The original pressure recording, as shown in the

1. The first step in the process is to identify the problem or issue that needs to be addressed. This involves gathering information and understanding the context of the problem.

1. The first group of people who are not in the labor force are those who are not in the labor force because they are not in the labor force. This group is the largest group of people who are not in the labor force.

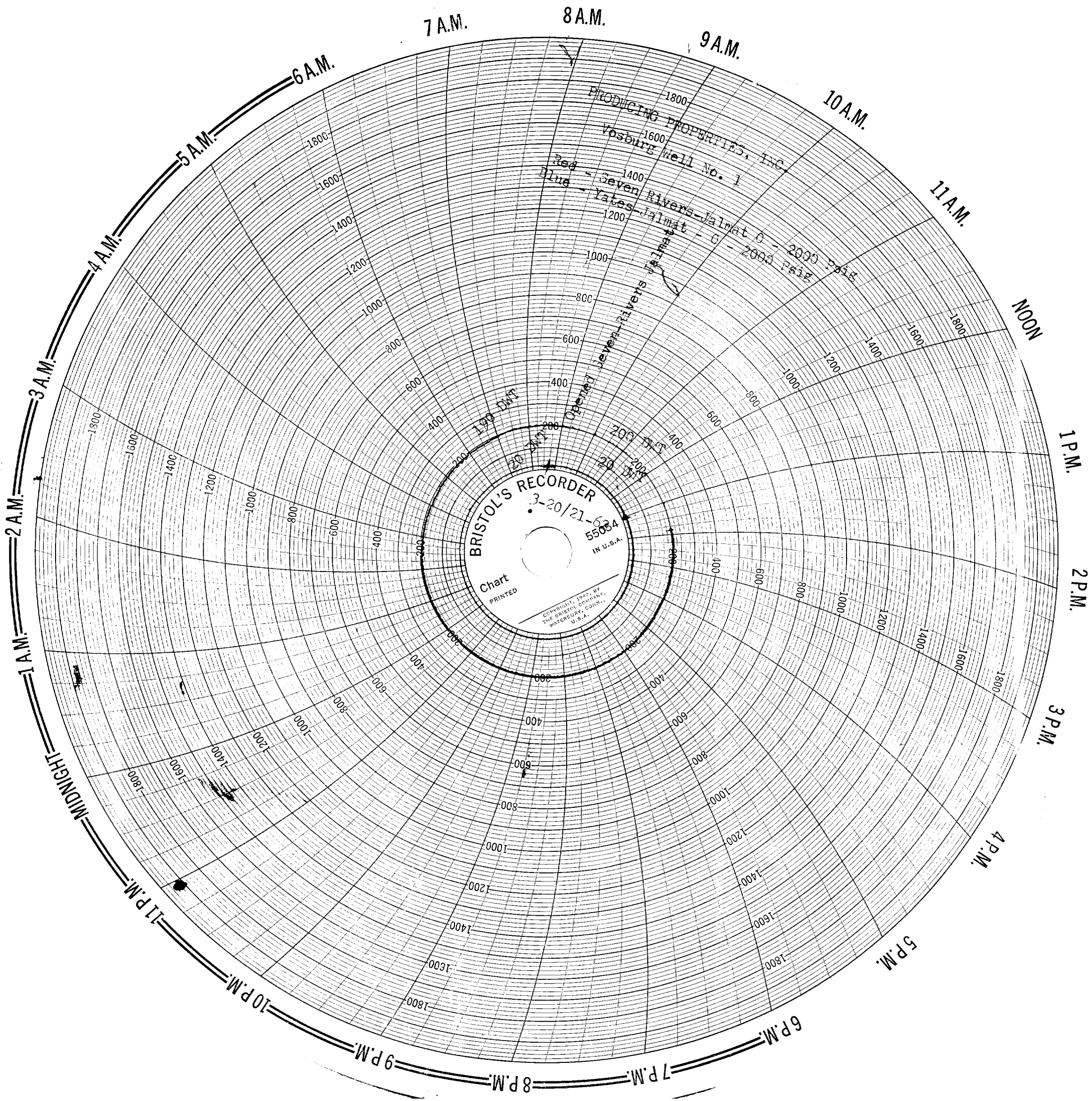
1. $\frac{1}{2} \times \frac{1}{2} = \frac{1}{4}$ (probability of getting two heads)



Handwritten notes at the top of the page, possibly a title or header, including the word "SPECIAL".

Handwritten notes in the middle of the page, including the word "SPECIAL" and other illegible text.

A small handwritten mark or signature.





1 #