

Submit 3 Copies
to Appropriate
District Office

State of New Mexico
Energy, Minerals and Natural Resources Department

Form C-103
Revised 1-1-89

OIL CONSERVATION DIVISION

DISTRICT I
P.O. Box 1980, Hobbs, NM 88240

DISTRICT II
P.O. Drawer DD, Artesia, NM 88210

DISTRICT III
1000 Rio Brazos Rd., Aztec, NM 87410

P.O. Box 2088
Santa Fe, New Mexico 87504-2088

WELL API NO. 30 - 025 - 11639
5. Indicate Type of Lease STATE <input type="checkbox"/> FEE <input checked="" type="checkbox"/>
6. State Oil & Gas Lease No.

SUNDRY NOTICES AND REPORTS ON WELLS (DO NOT USE THIS FORM FOR PROPOSALS TO DRILL OR TO DEEPEN OR PLUG BACK TO A DIFFERENT RESERVOIR. USE "APPLICATION FOR PERMIT" (FORM C-101) FOR SUCH PROPOSALS.)	
1. Type of Well: OIL WELL <input type="checkbox"/> GAS WELL <input checked="" type="checkbox"/> OTHER	7. Lease Name or Unit Agreement Name WOOLWORTH B
2. Name of Operator Texaco Exploration and Production Inc.	8. Well No. 1
3. Address of Operator P. O. Box 730 Hobbs, NM 88240	9. Pool name or Wildcat JALMAT YATES 7R (GAS)
4. Well Location Unit Letter D : 330 Feet From The NORTH Line and 990 Feet From The WEST Line Section 17 Township 25-S Range 37-E NMPM LEA County	
10. Elevation (Show whether DF, RKB, RT, GR, etc.) 3114' GL	

11. Check Appropriate Box to Indicate Nature of Notice, Report, or Other Data	
NOTICE OF INTENTION TO:	SUBSEQUENT REPORT OF:
PERFORM REMEDIAL WORK <input type="checkbox"/>	REMEDIAL WORK <input type="checkbox"/>
TEMPORARILY ABANDON <input type="checkbox"/>	ALTERING CASING <input type="checkbox"/>
PULL OR ALTER CASING <input type="checkbox"/>	COMMENCE DRILLING OPNS. <input type="checkbox"/>
OTHER: <input type="checkbox"/>	PLUG AND ABANDONMENT <input type="checkbox"/>
	CASING TEST AND CEMENT JOB <input type="checkbox"/>
	OTHER: <input type="checkbox"/>

12. Describe Proposed or Completed Operations (Clearly state all pertinent details, and give pertinent dates, including estimated date of starting any proposed work) SEE RULE 1103.

- 1) Inform the NMOCD 24 hours prior to commencement of plugging.
- 2) MIRU, Install BOP. TOH with tubing and lay down. Run bit and casing scraper and clean hole to TD.
- 3) By wireline, set CIBP above casing shoe. Find TOC with bond log. Perforate squeeze hole above TOC if necessary.
- 4) TIH w/ work string and tag CIBP. Load hole with salt gel mud; 10# brine and 25# gel/ Bbl. Pump 150', 30 sx class 'C' cement on top of CIBP.
- 5) Pump 100' plug across T/ salt with 20 sx. WOC. Tag cement. Fill casing from 500'-surface with 90 sx. If TOC is below surface shoe, circulate cement to surface and squeeze formation with 50 sx cement.
- 6) Cut off wellhead and install marker. Clean location.

I hereby certify that the information above is true and complete to the best of my knowledge and belief.

SIGNATURE Robert McNaughton TITLE Production Engineer DATE 8-18-92

TYPE OR PRINT NAME Robert McNaughton TELEPHONE NO. 397 - 0428

(This space for State Use)

ORIGINAL SIGNED BY JERRY SEXTON
DISTRICT I SUPERVISOR

APPROVED BY _____ TITLE _____ DATE _____

CONDITIONS OF APPROVAL, IF ANY:

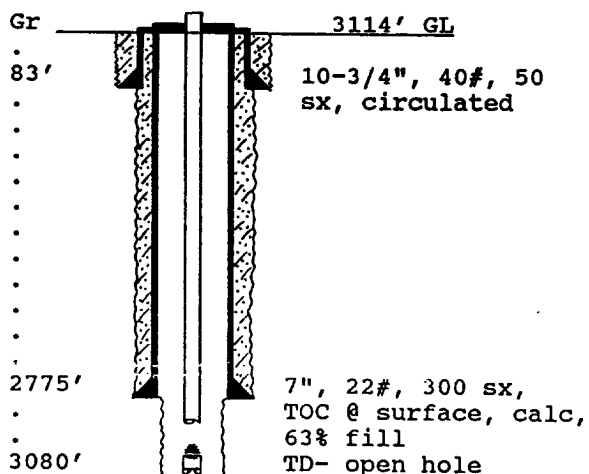
AUG 26 '92

WELL DATA SHEET

PO-113
(5/91)

OPERATOR: Texaco E&P Inc. Lease: Woolworth "B" #1
 FOOTAGE LOCATION: 990 FWLx 330 FNL Sec./Twn/Rng: Unit D, Sec 17, T-25-S, R-37-E
 Former Operator: Culbertson & Irwin Inc., Reserve Oil & Gas Lea County, New Mexico

SCHEMATIC



Tops:

Anhydrite 1075'
 Salt 1185'-2660'
 Yates 2805'
 Seven Rivers 3090' (estimated)

TABULAR DATA

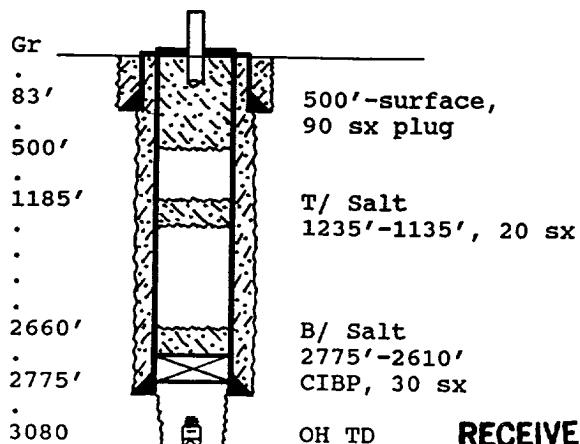
Surface Casing: Set at 83'
 Size 10-3/4", 40# Cemented with 50 sx.
 TOC surface ' determined by circulated
 Hole Size 12-1/2" Comp. Date 3-25-49
 Intermediate casing: Set at _____
 Size none Cemented with _____ sx.
 TOC _____ ' determined by _____
 Hole Size _____
 Production Casing: Set at 2775'
 Size 7", 22# Cemented with 300 sx.
 TOC surface determined by calc., 63% fill
 Hole Size 8", drilled by cable tool
 Open Hole Interval:
2775' to 3080' Size 6"
 Nitro Shot none, 6"x 6' drill bit on bottom

PLUG AND ABANDON DATA

PO-113
(5/91)

OPERATOR: Texaco Exploration & Production Inc. Lease: Woolworth B #1
 FOOTAGE LOCATION: 330 FNL X 990 FWL Sec./Twn/Rng: Unit D, Sec 17, T-25-S, R-37-E
 Well TA in September, 1969. Lea County, New Mexico

SCHEMATIC



PLUGGING DATA

Surface Plug:
 Size 500'-surf. Cemented with 90 sx.
 ** If TOC is below surface shoe, set retainer, circ. cement through annulus and squeeze 50 sx into formation.**
 Intermediate Plug(s):
 Size 1235'-1135' Cemented with 20 sx.
2760'-2610'
 Class 'C' cement, 1.32 cu ft/ sx
 Producing Zone Plugs:
 Size CIBP Cemented with 30 sx.

RECEIVED
 AUG 25 1992
 OCD HOBBS OFFICE