

Use for reporting  
packer leakage tests  
in Northwest New Mexico

NEW MEXICO OIL CONSERVATION COMMISSION  
SOUTHEAST NEW MEXICO PACKER LEAKAGE TEST

Operator <u>American Hess Corporation</u>				Lease <u>Ed. Winterley</u>			Well No. <u>3</u>
Location of Well	Unit <u>L</u>	Sec <u>24</u>	Twp <u>25</u>	Rge <u>37</u>		County <u>Lea</u>	
Name of Reservoir or Pool		Type of Prod (Oil or Gas)	Method of Prod Flow, Art Lift	Prod. Medium (Tbg or Csg)	Choke Size		
Upper Compl	<u>DRINKARD</u>	<u>OIL</u>	<u>T.A.</u>	<u>C59</u>	<u>-</u>		
Lower Compl	<u>Fusselman</u>	<u>OIL</u>	<u>T.A.</u>	<u>Tbg</u>	<u>-</u>		

FLOW TEST NO. 1

Both zones shut-in at (hour, date): 9:00 AM January 31, 1972

Well opened at (hour, date): \_\_\_\_\_

Indicate by ( X ) the zone producing.....

Pressure at beginning of test..... 180 770

Stabilized? (Yes or No)..... yes yes

Maximum pressure during test..... 180 770

Minimum pressure during test..... 180 770

Pressure at conclusion of test..... 180 770

Pressure change during test (Maximum minus Minimum)..... - -

Was pressure change an increase or a decrease?..... - -

Well closed at (hour, date): 9:00 AM February 4, 1972 Total Time On Production 96 hours

Oil Production \_\_\_\_\_ Gas Production \_\_\_\_\_

During Test: \_\_\_\_\_ bbls; Grav. \_\_\_\_\_; During Test \_\_\_\_\_ MCF; GOR \_\_\_\_\_

Remarks Both zones are temporarily abandoned.

FLOW TEST NO. 2

Well opened at (hour, date): \_\_\_\_\_

Indicate by ( X ) the zone producing.....

Pressure at beginning of test.....

Stabilized? (Yes or No).....

Maximum pressure during test.....

Minimum pressure during test.....

Pressure at conclusion of test.....

Pressure change during test (Maximum minus Minimum).....

Was pressure change an increase or a decrease?.....

Well closed at (hour, date) \_\_\_\_\_ Total time on Production \_\_\_\_\_

Oil Production \_\_\_\_\_ Gas Production \_\_\_\_\_

During Test: \_\_\_\_\_ bbls; Grav. \_\_\_\_\_; During Test \_\_\_\_\_ MCF; GOR \_\_\_\_\_

Remarks \_\_\_\_\_

I hereby certify that the information herein contained is true and complete to the best of my knowledge.

Approved Feb 10 1972 19 \_\_\_\_\_  
New Mexico Oil Conservation Commission

Operator American Hess Corporation  
By [Signature]

By \_\_\_\_\_  
Title \_\_\_\_\_

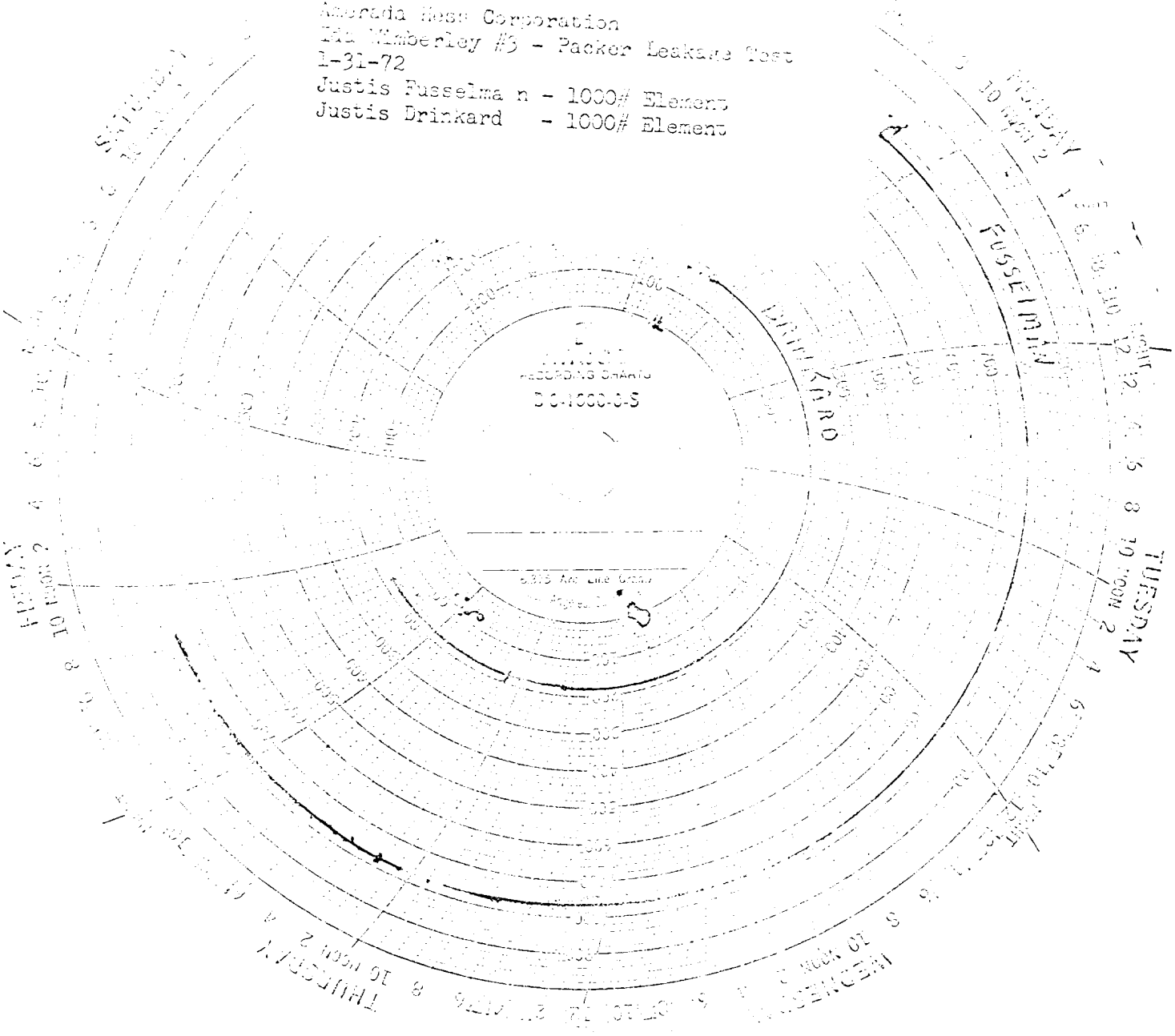
Title ASFA Superintendent

**RECEIVED**

FEB 6 1972

OIL CONSERVATION COMM.  
HOBBES B. H.

Amerada Hess Corporation  
140 Kimberley #3 - Packer Leakage Test  
1-31-72  
Justis Fusselman - 1000# Element  
Justis Drinkard - 1000# Element



RECORDING CHART  
30-1000-3-5

3015 Air Line Group  
April 1972

DRINK YARD

FUSSELMAN

TUESDAY

THURSDAY

WEDNESDAY

FRIDAY

1

2

3

4

5

6

7

8

9

10

11

12