

EF

NOV 21 1957
DEC 21 PM 2 45

Box 547
Hobbs, New Mexico
December 24, 1957

New Mexico Oil Conservation Commission
P. O. Box 2045
Hobbs, New Mexico

Please find attached a Diagrammatical
Sketch, Packer Leakage Test, Bottom Hole Pressures,
Packer Setting Affidavit and Gas Oil Ratios conducted
on our A. B. Coates "C" Well #8, oil/oil dual completion,
in conformance with Order R-1041.

E. W. Hogue
E. W. Hogue

MM:bbh

Attachments

cc: L. C. C. S.
Tulsa
Midland
File

EF

RECORDS OFFICE CCC

NEW MEXICO OIL CONSERVATION COMMISSION 2:42 PM 2:42-56
SANTA FE, NEW MEXICO

PACKER-SETTING AFFIDAVIT
(Dual Completions)

STATE OF New Mexico)
County of Lea) ss

W. W. Scott, being first duly sworn according to law, upon his oath deposes and says:

That he is of lawful age and has full knowledge of the facts herein below set out.

That he is employed by Tidewater Oil Company in the capacity of Field Foreman and as such is its authorized agent.

That on October 6, 1957, he personally supervised the setting of a Baker Model "B" Production Packer in Tidewater Oil Company's (Operator)

A. B. Coates NCE Well No. 8, located in Unit (Lease) Letter B, Section 24, Township 25S, Range 37E, NMPM, Lea County, New Mexico.

That said packer was set at a subsurface depth of 7250 feet, said depth measurement having been furnished by Welox, Inc.

That the purpose of setting this packer was to effect a seal in the annular space between the two strings of pipe where the packer was set so as to prevent the commingling, within the well-bore, of fluids produced from a stratum below the packer with fluids produced from a stratum above the packer. That this packer was properly set and that it did, when set, effectively and absolutely seal off the annular space between the two strings of pipe where it was set in such manner as that it prevented any movement of fluids across the packer.

Tidewater Oil Company
(Company)

W. W. Scott
(its Agent) W. W. Scott

Subscribed and sworn to before me this the 24th day of December, AD, 1957.

Harold E. Wilson Jr.
Notary Public in and for the County of Lea

My Commission Expires Dec. 2, 1959

87

NEW MEXICO
OIL CONSERVATION COMMISSION

PACKER LEAKAGE TEST

OPERATOR Tidewater Oil Company
LEASE NAME A. B. Coates "C" WELL NO. 8
LOCATION 660' F&L & 1880' F&L of Sec. 24-25S-37E Unit B COUNTY Lea

TEST DATA SHEET

Oil-Oil Dual w/ 2 strings of tubing.
McKee (Lower zone) Flowing
Drinkard (Upper zone) Pumping

Time	Casing Pressure	Tubing Pressure	Remarks
Dec. 12-1957 7:30 A.M.	60 psig	720 psig	Shut in both McKee & Drinkard zones to begin test. Hooked up Dual pin pressure recorder w/ red ink pin indicating pressure on McKee (Lower) zone & blue pin indicating pressure on Drinkard (Upper) zone.
2:00 P.M.	190 psig	1000 psig	Dead weight tester readings, Csg. 194 psig, tbg. 995 psig
Dec. 13-1957 6:00 A.M.	330 psig	1010 psig	Dead weight tester readings, Csg. 335 psig, tbg. 1007 psig.
7:30 A.M.	345 psig	1045 psig	After 24 hrs. of shut in time, the McKee zone, which is the lower section & all pressures pertaining to this zone will be listed under tubing pressure, had stabilized at 1045 psig. The Drinkard zone, which is the upper zone & all pressures are listed under casing pressure, was still building up.
10:30 A.M.	360 psig	1045 psig	Drinkard zone did not stabilize after 27 hrs. of shut in time, so continued test by opening up McKee and flowing same on 10/64" choke.
3:30 P.M.	400 psig	505 psig	McKee zone flowing pressure stabilized at 505 psig on 10/64" choke at the rate of 4.13 bbls/hr. & with a gas-oil ratio of 801 to 1.
6:00 P.M.	410 psig	500 psig	Deadweight tester readings, Csg. 414 psig, Tbg. 504 psig
6:30 P.M.	410 psig	505 psig	Shut in McKee zone after recording 3 hrs. of stabilized flowing pressure.
Dec. 14-1957 10:00 A.M.	500 psig	1125 psig	Deadweight tester recording, Csg. 506 psig, Tbg. 1120 psig
12 Noon	500 psig	1125 psig	McKee zone stabilized @ 1125#, Drinkard zone had stabilized @ 500#. Continued test by opening up casing and started pumping Drinkard.
12:20 P.M.	30 psig	1125 psig	Casing pressure immediately stabilized while pumping at the rate of 33.1 BO and 61 BWPD with GOR of 755:1. No change in McKee pressure.
3:30 P.M.	30 psig	1125 psig	After 3 hrs. stabilized production from the Drinkard and no change in McKee pressures, test was completed.

NEW MEXICO
OIL CONSERVATION COMMISSION

4-1-56

PACKER LEAKAGE TEST

NO. 88 OFFICE COO

Operator Tidewater Oil Company Pool (Upper Completion) Undesignated Drinkard
Lease A. B. Coates "C" Well 8 Pool (Lower Completion) Undesignated McKee
Location: Unit 2B, S. 24, T. 25S, R. 37E, Lea County, N. M.

Pre-Test Shut-In

	Upper Completion	Lower Completion
Shut-in at (hour, date).....	<u>7:30 A.M. 12-12-57</u>	<u>7:30 A.M. 12-12-57</u>
Pressure stabilized at (hour, date).....		<u>11:00 P.M. 12-12-57</u>
Length of time required to stabilize (hours).....		<u>15.5</u>

Flow Test No. 1

Test commenced at (hour, date) 10:30 A.M. 12-13-57 Choke size 10/64"
Completion producing McKee Completion shut-in Drinkard

	Upper Completion	Lower Completion
Stabilized pressure at beginning of test.....	<u>Not stabilized</u> psi	<u>1045</u> psi
Maximum pressure during test.....	<u>410</u> psi	<u>515</u> psi
Minimum pressure during test.....	<u>360</u> psi	<u>395</u> psi
Pressure at end of test.....	<u>410</u> psi	<u>505</u> psi
Maximum pressure change during test.....	<u>50</u> psi	<u>120</u> psi
Oil flow rate during test: <u>99</u> BOPD based on <u>33</u> BO in		<u>8</u> hours.
Gas flow rate during test: <u>80</u> MCFPD based on <u>26.7</u> MCF in		<u>8</u> hours.

Mid-Test Shut-In

	Upper Completion	Lower Completion
Shut-in at (hour, date).....	<u>7:30 A.M. 12-12-57</u>	<u>6:30 P.M. 12-13-57</u>
Pressure stabilized at (hour, date).....	<u>Not stabilized</u>	<u>8:15 A.M. 12-14-57</u>
Length of time required to stabilize (hours).....		<u>13.75</u>

Flow Test No. 2

Test commenced at (hour, date) 12:00 Noon 12-14-57 Choke size 2" tubing
Completion producing Drinkard Completion shut-in McKee

	Upper Completion	Lower Completion
Stabilized pressure at beginning of test.....	<u>Not stabilized</u> <u>500</u> psi	<u>1125</u> psi
Maximum pressure during test.....	<u>30</u> psi	<u>1125</u> psi
Minimum pressure during test.....	<u>30</u> psi	<u>1125</u> psi
Pressure at end of test.....	<u>40</u> psi	<u>1125</u> psi
Maximum pressure change during test.....	<u>10</u> psi	<u>0</u> psi
Oil flow rate during test: <u>33.1</u> BOPD based on <u>4.83</u> BO in		<u>3.5</u> hours.
Gas flow rate during test: <u>25</u> MCFPD based on <u>3.6</u> MCF in		<u>3.5</u> hours.

Test performed by T.C. Gibson Title Senior Field Engineer

Witnessed by _____ Title _____

REMARKS: Offset operators and New Mexico Oil Conservation Commission were notified,
but none desired to witness tests.

NOTE: Recording gauge pressure charts, test data sheet, and a graphic depiction of all phases of the test shall be submitted with this report.

AFFIDAVIT:

I HEREBY CERTIFY that all conditions prescribed by Oil Conservation Commission of the State of New Mexico for this packer leakage test were complied with and carried out in full, and that all dates and facts set forth in this form and all attached material are true and correct.

E. W. Hogue For Tidewater Oil Company
(Representative of Company Making Test) (Company Making Test)

SWORN TO AND SUBSCRIBED before me this 24th day of December, 1957

Harold E. Wilson Jr.
Notary Public in and for the County of Lea
State of New Mexico

(OVER)

MY COMMISSION EXPIRES DECEMBER 2, 1959

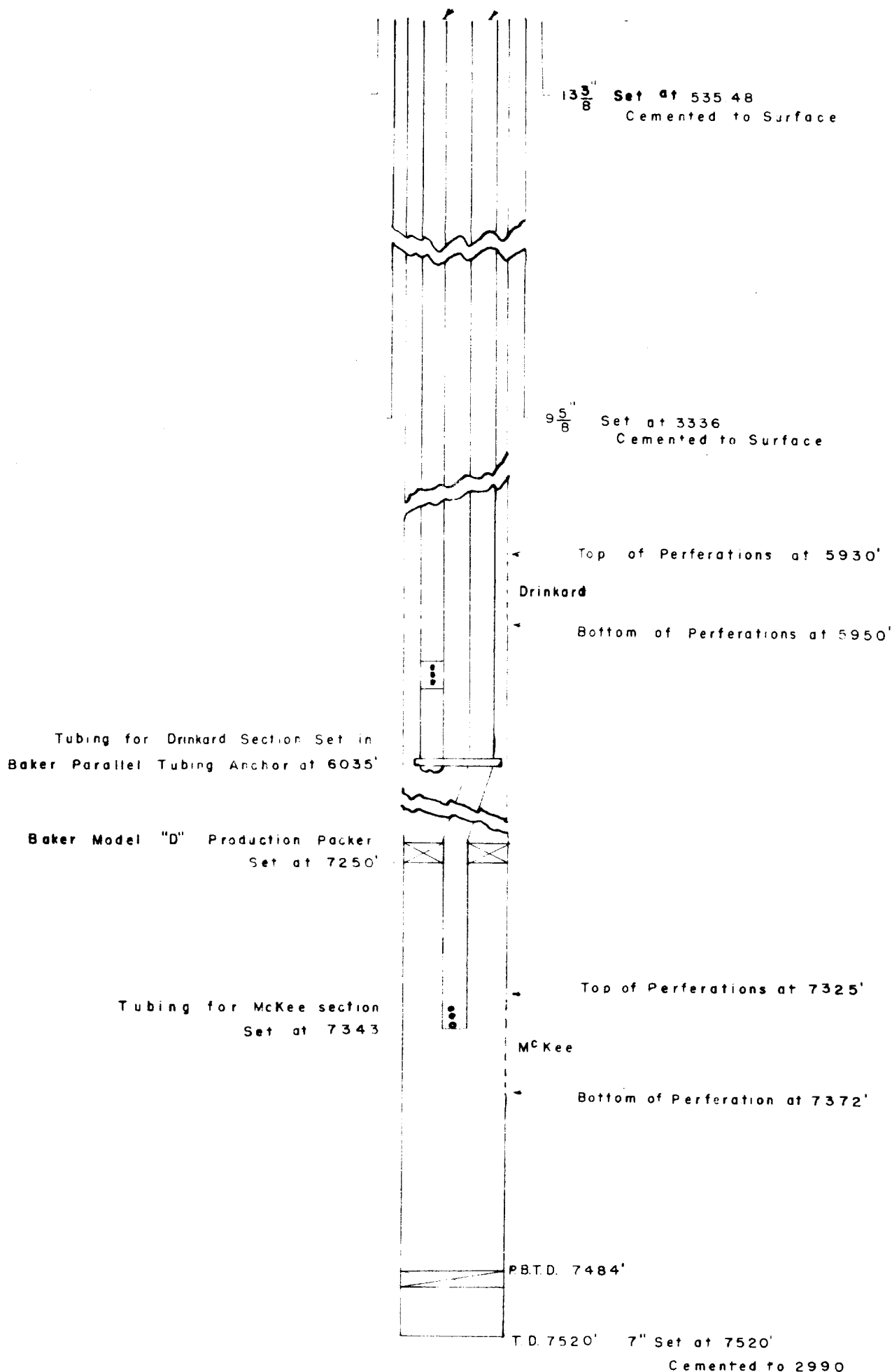
E7

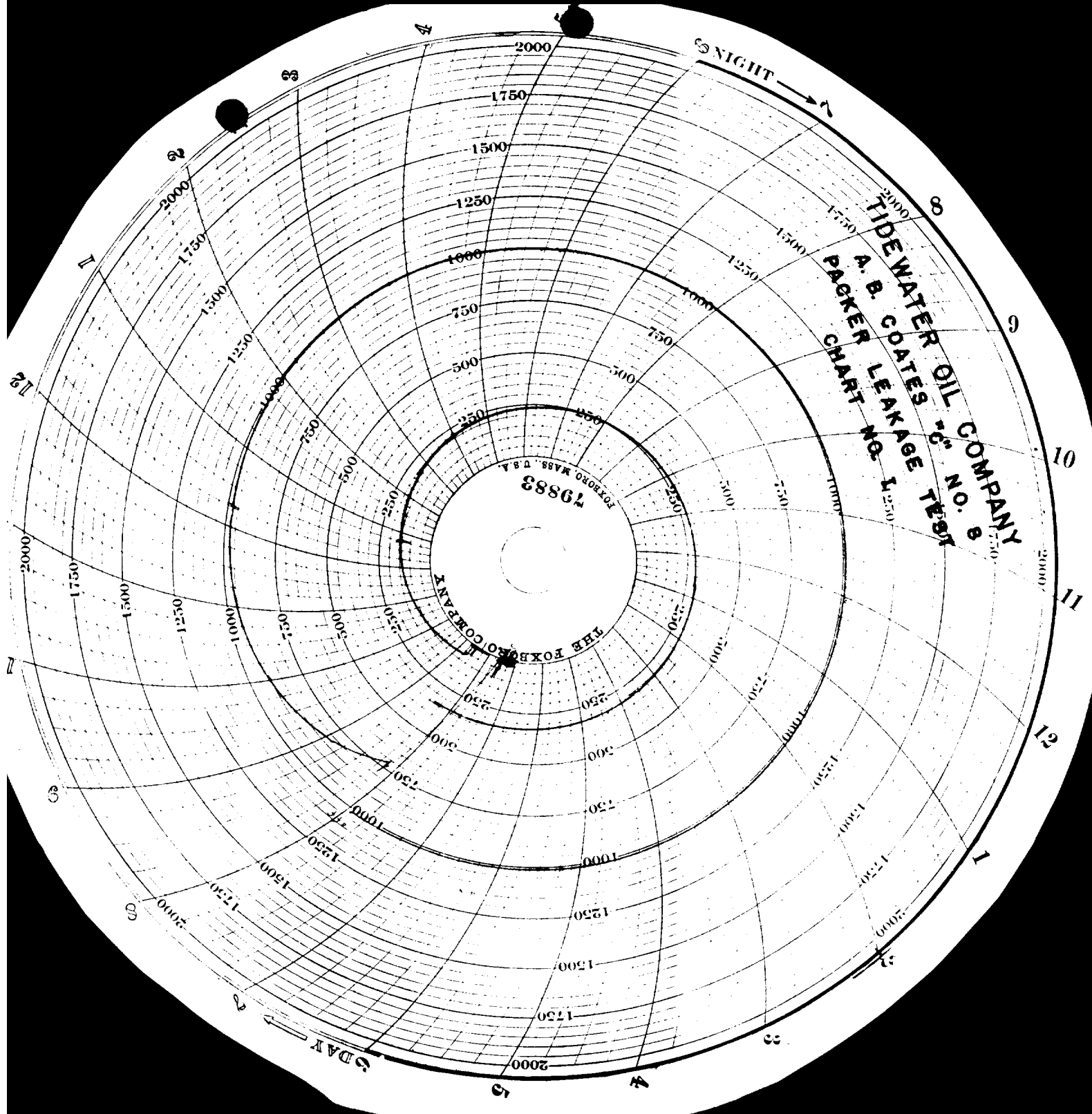
TIDEWATER OIL COMPANY

A B. COATES "C" NO. 8
 PARALLEL STRING, OIL/OILFIELD 000
 DUAL, PRESENTED IN COMPLIANCE
 TO NMOCC ORDER NO. 1041 PH 2 45

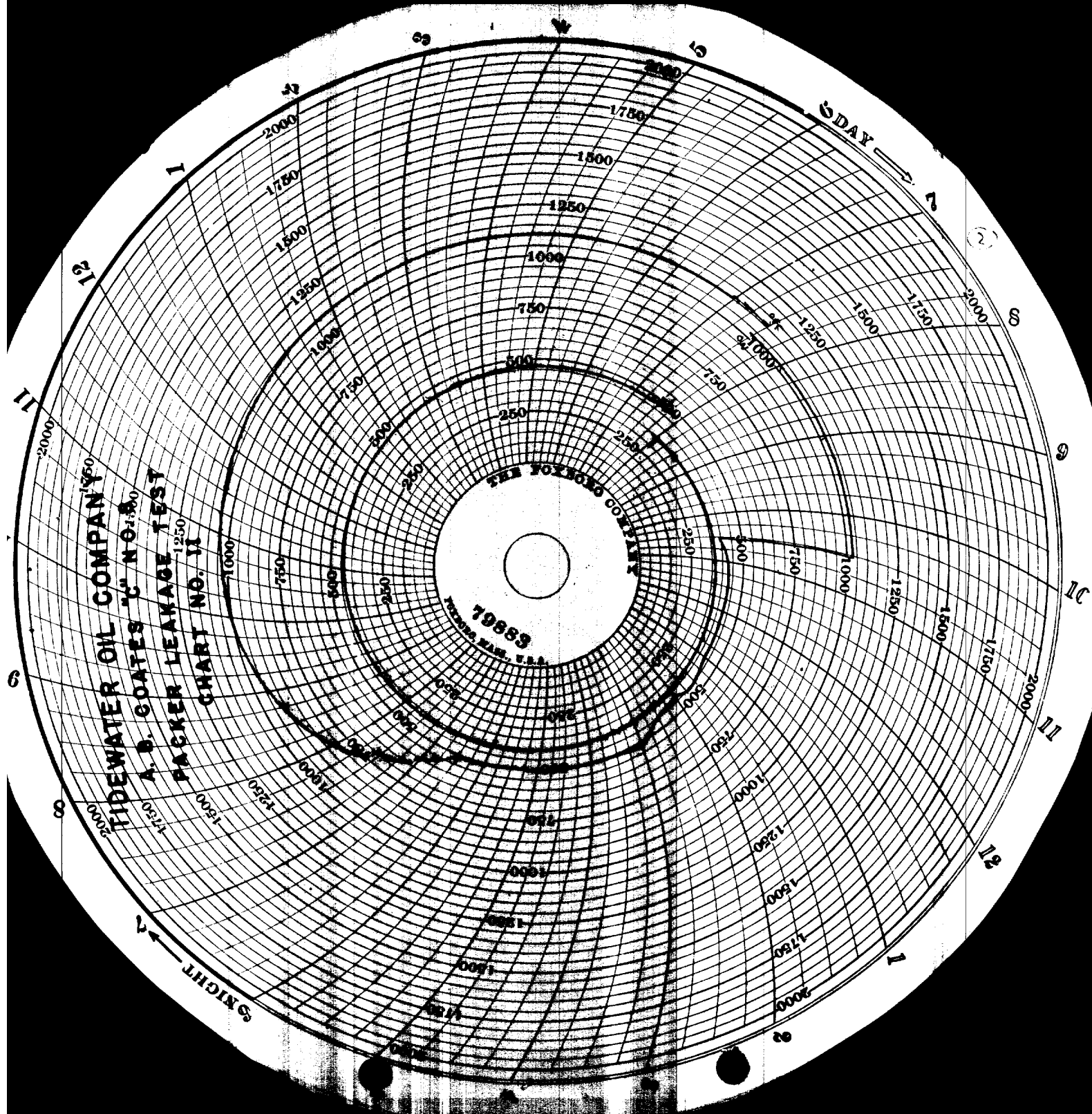
— 2 3/8" Tubing to Drinkard Section

— 2 3/8" Tubing to McKee Section





TIDEWATER OIL COMPANY
A. B. COATES
PACKER LEAKAGE
CHART NO. 1
3" TEST
No. 8

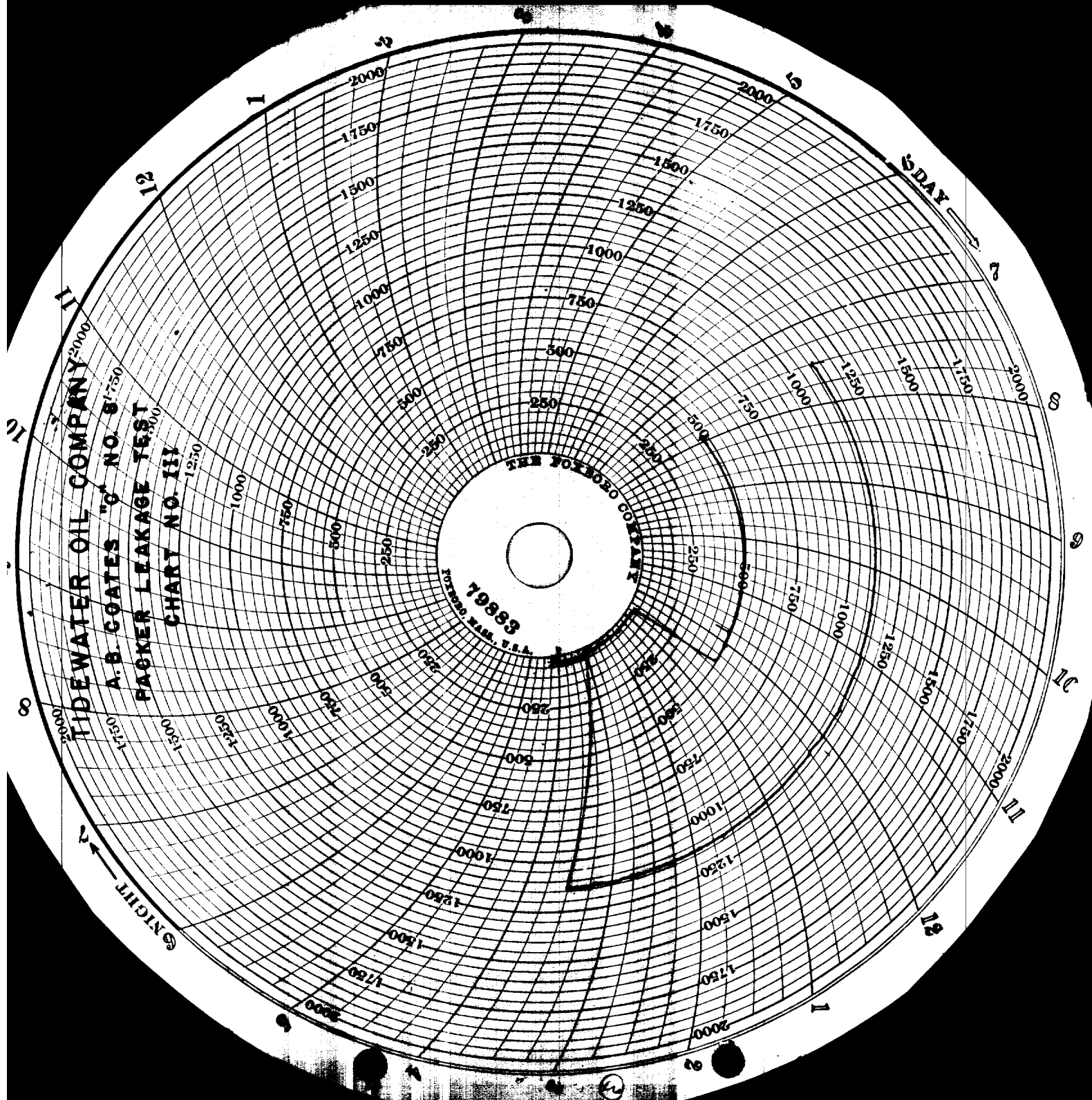


TIDEWATER OIL COMPANY
A. B. GOATES "C" NO. 150
PACKER LEAKAGE TEST
CHART NO. 11

THE FOXBORO COMPANY
19653
FOXBORO, MASS., U.S.A.

DAY

NIGHT



TIDEWATER OIL COMPANY
A.B. COATES "C" NO. 8 1750
PACKER LEAKAGE TEST
CHART NO. III

19883
THE FORD COMPANY
FORD MOTOR CO. DETROIT, MICH. U.S.A.