

UNITED STATES
DEPARTMENT OF THE INTERIOR
BUREAU OF LAND MANAGEMENTFORM APPROVED
Budget Bureau No. 1004-0135
Expires March 31, 1993

SUNDRY NOTICES AND REPORTS ON WELLS

Do not use this form for proposals to drill or to deepen or reentry to a different reservoir.

Use "APPLICATION FOR PERMIT --" for such proposals

SUBMIT IN TRIPLICATE

1. Type of Well: OIL WELL ☒ GAS WELL ☒ OTHER ☐

2. Name of Operator: TEXACO EXPLORATION & PRODUCTION INC.

3. Address and Telephone No.: PO BOX 3109, MIDLAND, TX 79702 915-688-458

4. Location of Well (Footage, Sec., T., R., M., or Survey Description):
Unit Letter J : 1980 Feet From The SOUTH Line and 1980 Feet From The
EAST Line Section 24 Township 25S Range 37E

5. Lease Designation and Serial No.: LC 032650B

6. If Indian, Alottee or Tribe Name:

7. If Unit or CA, Agreement Designation:

8. Well Name and Number: COATES, A. B. -C- 9

9. API Well No.: 30 025 11731

10. Field and Pool, Exploratory Area: MID-JUSTIS ABO

11. County or Parish, State: LEA, NEW MEXICO

12. Check Appropriate Box(s) To Indicate Nature of Notice, Report, or Other Data

TYPE OF SUBMISSION

☒ Notice of Intent

Subsequent Report

Final Abandonment Notice

Abandonment

Recompletion

Plugging Back

Casing Repair

Altering Casing

☒ OTHER: DRILL SIDETRACK-amended

TYPE OF ACTION

Change of Plans

New Construction

Non-Routine Fracturing

Water Shut-Off

Conversion to Injection

Dispose Water

(Note: Report results of multiple completion on Well Completion or Recompletion Report and Log Form.)

13. Describe Proposed or Completed Operations (Clearly state all pertinent details, and give pertinent dates, including estimated date of starting any proposed work. If well is directionally drilled, give subsurface locations and measured and true vertical depths for all markers and zones pertinent to this work.)

TEXACO INTENDS TO DIRECTIONALLY DRILL A SIDETRACK IN THE SUBJECT WELL.

TOP OF WINDOW: 6186'

BOTTOM OF WINDOW: 6196'

KICK OFF POINT: 6190'

THIS WILL BE A NONSTANDARD LOCATION DUE TO THE LOCATION BEING LESS THAN 860' FROM THE 1/4-1/4 SECTION LINES. SIMULTANEOUS DEDICATION IS ALSO BEING APPLIED FOR ALONG WITH NONSTANDARD APPROVAL.

PROPOSED BHL: J, 24, 25S, 37E, 1675' FSL, 1970' FEL.

SUBJECT TO
LIKE APPROVAL
BY STATE

14. I hereby certify that the foregoing is true and correct.

SIGNATURE

TITLE Administrative Supvr

DATE

7/25/01

TYPE OR PRINT NAME: John Ayers

APPROVED (This space for Federal or State office use)

APPROVED (ORIG. SGD.) DAVID R. GLASS

CONDITIONS OF APPROVAL IF ANY

Title 18 U.S.C. Section 1001, makes it a crime for any person knowingly and willfully to make to any department or agency of the United States any false, fictitious or fraudulent statements or representations as to any matter within its jurisdiction.

DAVID R. GLASS
PETROLEUM ENGINEER

DISTRICT I

P.O. Box 1980, Hobbs, NM 88241-1980

DISTRICT II

P.O. Box Drawer DD, Artesia, NM 88211-0719

DISTRICT III

1000 Rio Brazos Rd., Aztec, NM 87410

DISTRICT IV

P.O. Box 2088, Santa Fe, NM 87504-2088

State of New Mexico

Energy, Minerals and Natural Resources Department

Form C-102

Revised February 10, 1999

Instructions on back

Submit to Appropriate District Office

State Lease - 4 Copies

Fee Lease - 3 Copies

✓ AMENDED REPORT

OIL CONSERVATION DIVISION

P.O. Box 2088

Santa Fe, New Mexico 87504-2088

WELL LOCATION AND ACREAGE DEDICATION PLAT

1 APT Number 30 025 11728	2 Pool Code 96543	3 Pool Name <i>Mid</i> JUSTIS ABO	5 Well No. 15
4 Property Code 10913	5 Property Name COATES, A. B. -C-	8 Operator Name TEXACO EXPLORATION & PRODUCTION INC.	9 Elevation 3084' KB
7 OGRID Number 022351			

10 Surface Location

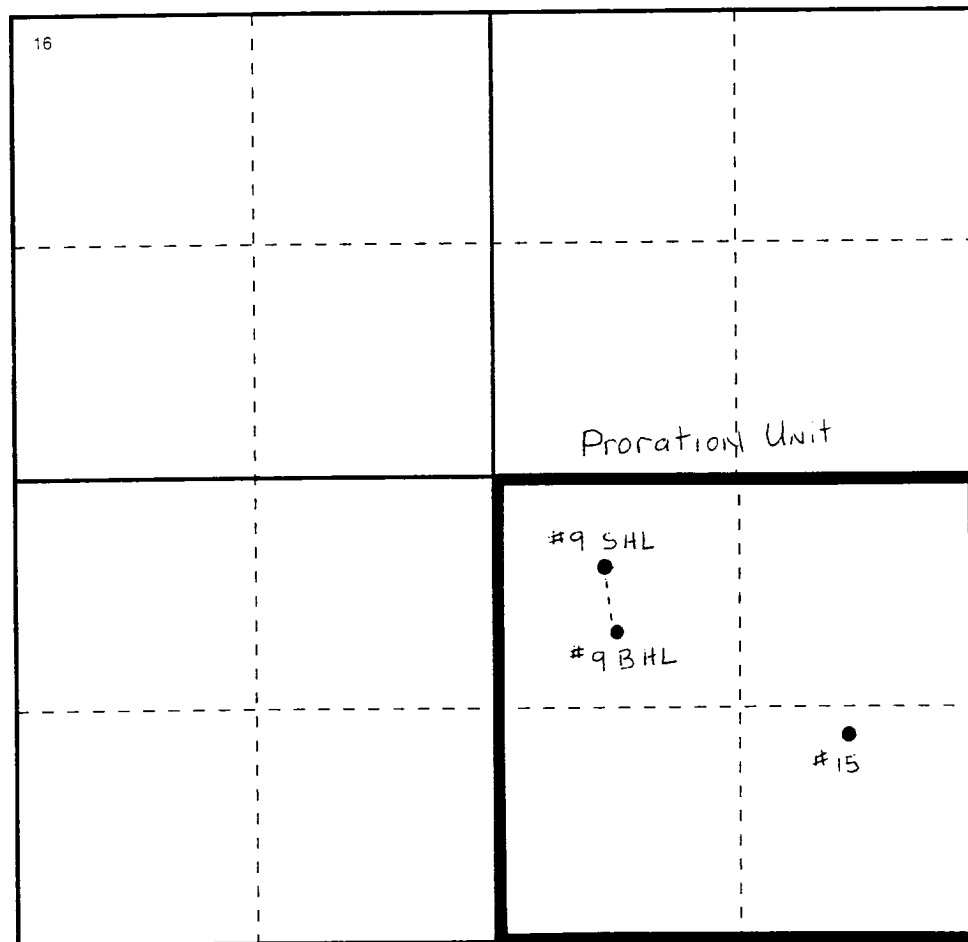
UI or lot no	Section	Township	Range	Lot.Idn	Feet From The	North/South Line	Feet From The	East/West Line	County
O	24	25S	37E		660	SOUTH	1980	EAST	LEA

11 Bottom Hole Location If Different From Surface

UI or lot no.	Section	Township	Range	Lot.Idn	Feet From The	North/South Line	Feet From The	East/West Line	County
P	24	25S	37E		1260	SOUTH	735	EAST	LEA

12 Dedicated Acre 160	13 Joint or Infill No	14 Consolidation Code	15 Order No.
--------------------------	--------------------------	-----------------------	--------------

NO ALLOWABLE WILL BE ASSIGNED TO THIS COMPLETION UNTIL ALL INTERESTS HAVE BEEN CONSOLIDATED
OR A NON-STANDARD UNIT HAS BEEN APPROVED BY THE DIVISION



17 OPERATOR CERTIFICATION

I hereby certify that the information contained herein is true and complete to the best of my knowledge and belief

Signature

John Ayers

Printed Name

John Ayers

Position

Administrative Supvr

Date

7/25/01

18 SURVEYOR CERTIFICATION

I hereby certify that the well location shown on this plat was plotted from field notes of actual surveys made by me or under my supervision, and that the same is true and correct to the best of my knowledge and belief

Date Surveyed

Signature & Seal of
Professional Surveyor

Certificate No.

DISTRICT I
P O Box 1980, Hobbs, NM 88241-1980
DISTRICT II
P O Box Drawer DD, Artesia, NM 88211-0719
DISTRICT III
1003 Rio Brazos Rd., Aztec, NM 87410
DISTRICT IV
P O Box 2088, Santa Fe, NM 87504-2088

State of New Mexico
Energy, Minerals and Natural Resources Department

Form C-102
Revised February 10, 1999
Instructions on back
Submit to Appropriate District Office
State Lease - 4 Copies
Fee Lease - 3 Copies
✓ AMENDED REPORT

OIL CONSERVATION DIVISION

P.O. Box 2088
Santa Fe, New Mexico 87504-2088

WELL LOCATION AND ACREAGE DEDICATION PLAT

1 API Number 30 025 11731	2 Pool Code 96543	3 Pool Name MID-JUST'S ABO
4 Property Code 010913	5 Property Name COATES, A. B. -C-	6 Well No 9
7 OGRID Number 022351	8 Operator Name TEXACO EXPLORATION & PRODUCTION INC.	9 Elevation 3086

10 Surface Location

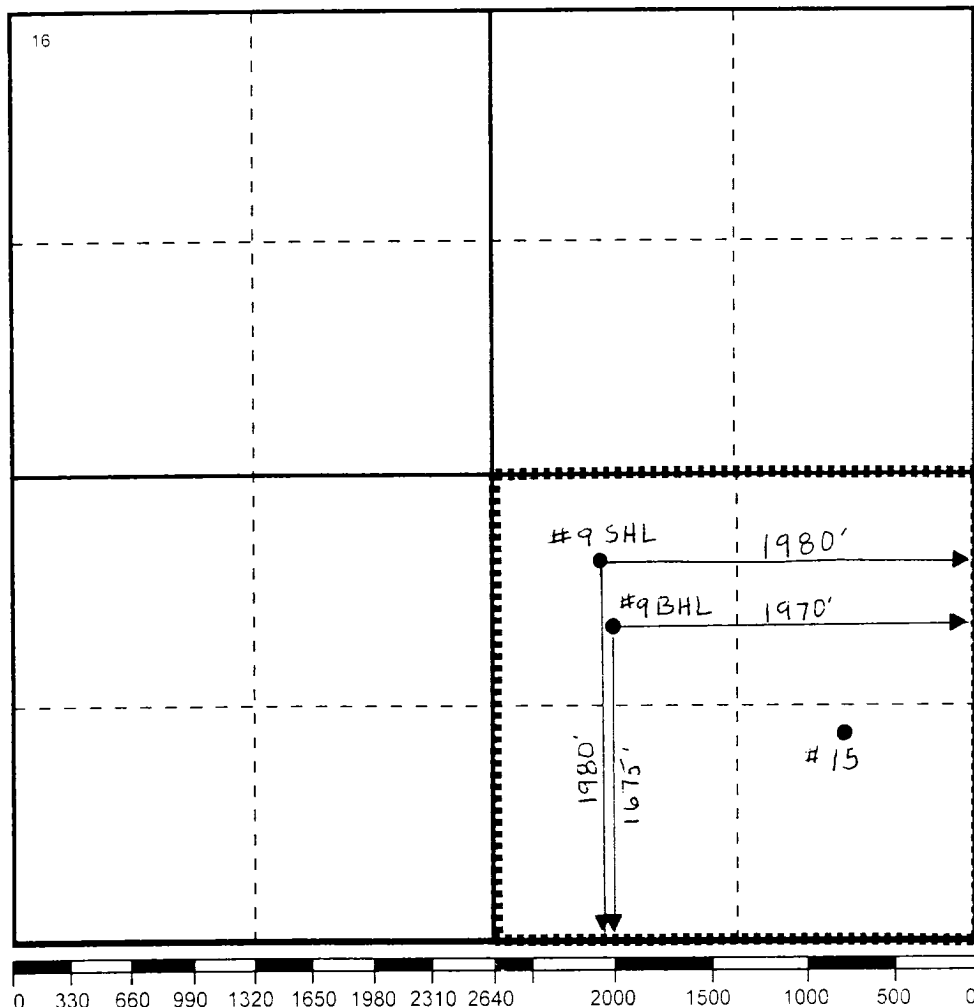
UI or lot no	Section	Township	Range	Lot.Idn	Feet From The	North/South Line	Feet From The	East/West Line	County
J	24	25S	37E		1980	SOUTH	1980	EAST	LEA

11 Bottom Hole Location If Different From Surface

UI or lot no.	Section	Township	Range	Lot.Idn	Feet From The	North/South Line	Feet From The	East/West Line	County
J	24	25S	37E		1675	SOUTH	1970	EAST	LEA

12 Dedicated Acre 160	13 Joint or Infill No	14 Consolidation Code	15 Order No.
--------------------------	--------------------------	-----------------------	--------------

NO ALLOWABLE WILL BE ASSIGNED TO THIS COMPLETION UNTIL ALL INTERESTS HAVE BEEN CONSOLIDATED
OR A NON-STANDARD UNIT HAS BEEN APPROVED BY THE DIVISION



17 OPERATOR CERTIFICATION

I hereby certify that the information contained herein is true and complete to the best of my knowledge and belief

Signature

John Ayers
Printed Name

John Ayers

Position

Administrative Supvr

Date

7/25/01

18 SURVEYOR CERTIFICATION

I hereby certify that the well location shown on this plat was plotted from field notes of actual surveys made by me or under my supervision, and that the same is true and correct to the best of my knowledge and belief.

Date Surveyed

Signature & Seal of
Professional Surveyor

Certificate No.



Hobbs Operating Unit

Amended Request

Texaco Exploration and Production Inc.
PO Box 3109
Midland, TX 79702
915 688-4100 tel
915 688-4751 fax

July 25, 2001

New Mexico Oil Conservation Division
Engineering Bureau
1220 South St. Francis Drive
Santa Fe, NM 87505

Attention: Mr. Michael Stogner

RE: AMENDED APPLICATION FOR NON-STANDARD LOCATION AND
SIMULTANEOUS DEDICATION (amended to change bottom hole location)

Dear Sirs:

Texaco respectfully seeks approval for a non-standard location for the A.B. Coates "C" Well No. 9 which will be a directionally drilled sidetrack (re-entry) of the of the original vertical wellbore. This sidetrack will be drilled in the Mid-Justis Abo Gas field (pool code - 96543). The surface location of said well is Unit Letter J, Section 24, Township 25S, Range 37E, 1980' from the south line, and 1980' from the east line. The proposed bottom hole location will be Unit Letter J, Section 24, Township 25S, Range 37E, 1675' from the south line, and 1970' from the east line. This will be non-standard due to being less than 660' from the $\frac{1}{4}$ - $\frac{1}{4}$ section lines.

Texaco is also asking for simultaneous dedication of well number 9, with well number 15. Number 9 is on the same 160 acre proration unit as A.B. Coates "C" #15.

From C-102 is included showing the location of #9 and #15.

If you have any further questions, please contact me at (915) 688-4580, or contact Denise Wann at (915) 688-2982.

Thank you for your consideration.

John Ayers
Administrative Supervisor

cc: Bureau of Land Management - Roswell
New Mexico Oil Conservation Division - Hobbs