

UNITED STATES  
DEPARTMENT OF THE INTERIOR  
BUREAU OF LAND MANAGEMENT  
N.M. Oil Cons. Division  
1625 N French Dr.  
Hobbs, NM 88240

FORM APPROVED  
Budget Bureau No. 1004-0135  
Expires: March 31, 1993

**SUNDRY NOTICES AND REPORTS ON WELLS**

Do not use this form for proposals to drill or to deepen or reentry to a different reservoir.

Use "APPLICATION FOR PERMIT --" for such proposals

**SUBMIT IN TRIPLICATE**

1. Type of Well: ☒ OIL WELL ☐ GAS WELL ☐ OTHER

2. Name of Operator  
CHEVRON USA INC

3. Address and Telephone No. 15 SMITH ROAD, MIDLAND, TX 79705 915-687-737

4. Location of Well (Footage, Sec., T., R., M., or Survey Description)  
Unit Letter F : 1980' Feet From The NORTH Line and 1650' Feet From The  
WEST Line Section 24 Township 25-S Range 37-E

5. Lease Designation and Serial No.  
LC 032650B

6. If Indian, Aottee or Tribe Name

7. If Unit or CA, Agreement Designation

8. Well Name and Number  
A. B. COATES "C" FEDERAL  
11

9. API Well No.  
30-025-11733

10. Field and Pool, Exploratory Area  
LANGLIE MATTIX 7 RVR QN GRAYBURG

11. County or Parish, State  
LEA, NM

12. Check Appropriate Box(s) To Indicate Nature of Notice, Report, or Other Data

TYPE OF SUBMISSION

- ☒ Notice of Intent  
☐ Subsequent Report  
☐ Final Abandonment Notice

TYPE OF ACTION

- ☐ Abandonment  
☒ Recompletion  
☐ Plugging Back  
☐ Casing Repair  
☐ Altering Casing  
☐ OTHER:  
☐ Change of Plans  
☐ New Construction  
☐ Non-Routine Fracturing  
☐ Water Shut-Off  
☐ Conversion to Injection  
☐ Dispose Water

(Note: Report results of multiple completion on Well Completion or Recompletion Report and Log Form.)

13. Describe Proposed or Completed Operations (Clearly state all pertinent details, and give pertinent dates, including estimated date of starting any proposed work. If well is directionally drilled, give subsurface locations and measured and true vertical depths for all markers and zones pertinent to this work.)

CHEVRON U.S.A. INC. INTENDS TO RECOMPLETE THE SUBJECT WELL FROM THE JUSTIS PADDOCK FORMATION TO THE LANGLIE MATTIX 7 RIVERS QUEEN GRAYBURG FORMATION AND ACIDIZE.

THE INTENDED PROCEDURE, CURRENT WELLBORE DIAGRAM, & PROPOSED WELLBORE DIAGRAM IS ATTACHED FOR YOUR APPROVAL.

14. I hereby certify that the foregoing is true and correct

SIGNATURE Denise Leake TITLE Regulatory Specialist

DATE 3/7/2003

TYPE OR PRINT NAME Denise Leake

(This space for Federal or State office use)

APPROVED

CONDITIONS OF APPROVAL, IF ANY: TITLE

DATE

Title 18 U.S.C. Section 1001, makes it a crime for any person knowingly and willfully to make to any department or agency of the United States any false, fictitious or fraudulent statements or representations as to any matter within its jurisdiction.

CC 0326805  
A. B. Coates "C" Federal # 11  
Langlie Mattix Field  
T25S, R37E, Section 24  
Job: PB To Grayburg Formation And Acidize

Procedure:

1. Displace flowline with fresh water. Have field specialist close valve at header. Pressure line according to the type of line. AGU, EMSU, and EMSUB buried fiberglass lines will be tested with 300 psi. All polypipe (SDR7 and SDR11) will be tested w/100 psi. All steel lines will be tested w/500 psi. If a leak is found, contact Larry Williams for repair/replacement. If test is good, bleed off pressure and **open valve** at header. Document this process in the morning report.
2. MI & RU pulling unit. Bleed pressure from well, if any. Pump down csg with 2% KCl water, if necessary to kill well. Remove WH. Install BOP's and test to 1000 psi.
3. PU and GIH with 6 1/4" MT bit and 2 7/8" work string to 4685'. Pressure test csg and CIBP to 500 psi. POH with work string and bit. LD bit.
4. MI & RU Baker Atlas electric line unit. Install lubricator and test to 1000 psi. GIH and conduct GR/Compensated Neutron/CCL log from 4685' up to 2685'. POH. **Note: Fax log to Cory Hoffman (915) 687-7264 for correlation and picking perfs.** GIH and conduct GR/CBL/CCL log from 4685' up to 2600'. POH. Inspect logs for good cement bond from approximately 3800' up to 2900'. If bond does not appear to be good across proposed completion interval, discuss with Engineering before proceeding. Cmt squeeze as necessary to obtain good cmt across completion interval. GIH with 3 1/8" DP slick casing gun and perforate from 3246-3442' with 4 JSPF at 120 degree phasing, using 23 gram premium charges. POH. RD & release electric line unit. **Note: Exact perfs will be adjusted after conducting logs.**
5. PU and GIH w/ 7" PPI pkr (with 10' element spacing) and SCV on 2 7/8" work string to approximately 3200'. Test tbg to 5500 psi while GIH.
6. MI & RU DS Services. Acidize perfs 3246-3442' with 100 gals anti-sludge 15% HCl acid \* per foot of perfs at a maximum rate of 1/2 **BPM** and a maximum surface pressure of **3500 psi**. Spot acid across perfs at beginning of each stage and let soak to lower breakdown pressure and prevent communication. Displace acid with 2% KCl water -- do not overdisplace. Use a SCV to control displacement fluid. Record ISIP, 5 & 10 minute SIP's. RD and release DS services. **Note: Pickle tubing in 1 run of 500 gals acid, prior to acidizing perfs. Pickle acid is to contain only 1/2 gal A264 and 1 gal W53.**

* Acid system is to contain:	1 GPT A264	Corrosion Inhibitor
	8 GPT L63	Iron Control Agent
	2 PPT A179	Iron Control Aid
	20 GPT U66	Mutual Solvent
	2 GPT W53	Non-Emulsifier

7. Release PPI pkr and PUH to approximately 3200'. Swab back all intervals together. Recover 100% of treatment and load volumes before shutting well in for night, if possible. Report recovered fluid volumes, pressures, and/or swabbing fluid levels. **Note: Selectively swab perms as directed by Engineering if excessive water is produced.**
8. Open well. Release PPI pkr. POH with tbg and PPI packer. LD 2 7/8" work string and PPI tool.
9. PU and GIH w/ BP mud anchor jt of 2 7/8" tbg, 2 7/8" x 4' perforated sub, SN, 10 jts 2 7/8" EUE 8R J-55 tbg, TAC, and 103 jts 2 7/8" EUE 8R J-55 tbg, testing to 5000 psi. Set TAC at 3200', with EOT at 3535' and SN at 3500'.
10. Remove BOP's and install WH. GIH with rods, weight bars, and pump per ALS recommended design. RD & release pulling unit.
11. Turn well over to production. Report producing rates, choke sizes, flowing pressures and/or fluid levels.

AMH  
3/6/2003

RECEIVED  
Holtz  
6/11

DISTRICT I

P.O. Box 1980, Hobbs, NM 88241-1980

DISTRICT II

P.O. Box Drawer DD, Artesia, NM 88211-0719

DISTRICT III

1000 Rio Brazos Rd., Aztec, NM 87410

DISTRICT IV

P.O. Box 2088, Santa Fe, NM 87504-2088

State of New Mexico  
Energy, Minerals and Natural Resources

Department

Form C-102

Revised February 10, 1999

Instructions on back

Submit to Appropriate District Office

State Lease - 4 Copies

Fee Lease - 3 Copies

☐ AMENDED REPORT

## OIL CONSERVATION DIVISION

P.O. Box 2088

Santa Fe, New Mexico 87504-2088

## WELL LOCATION AND ACREAGE DEDICATION PLAT

<sup>1</sup> API Number 30-025-11733	<sup>2</sup> Pool Code 37240	<sup>3</sup> Pool Name LANGLIE MATTIX 7 RVR QN GRAYBURG
<sup>4</sup> Property Code 29897	<sup>5</sup> Property Name A. B. COATES "C" FEDERAL	<sup>6</sup> Well No. 11
<sup>7</sup> OGRID Number 4323	<sup>8</sup> Operator Name CHEVRON USA INC	<sup>9</sup> Elevation

<sup>10</sup> Surface Location

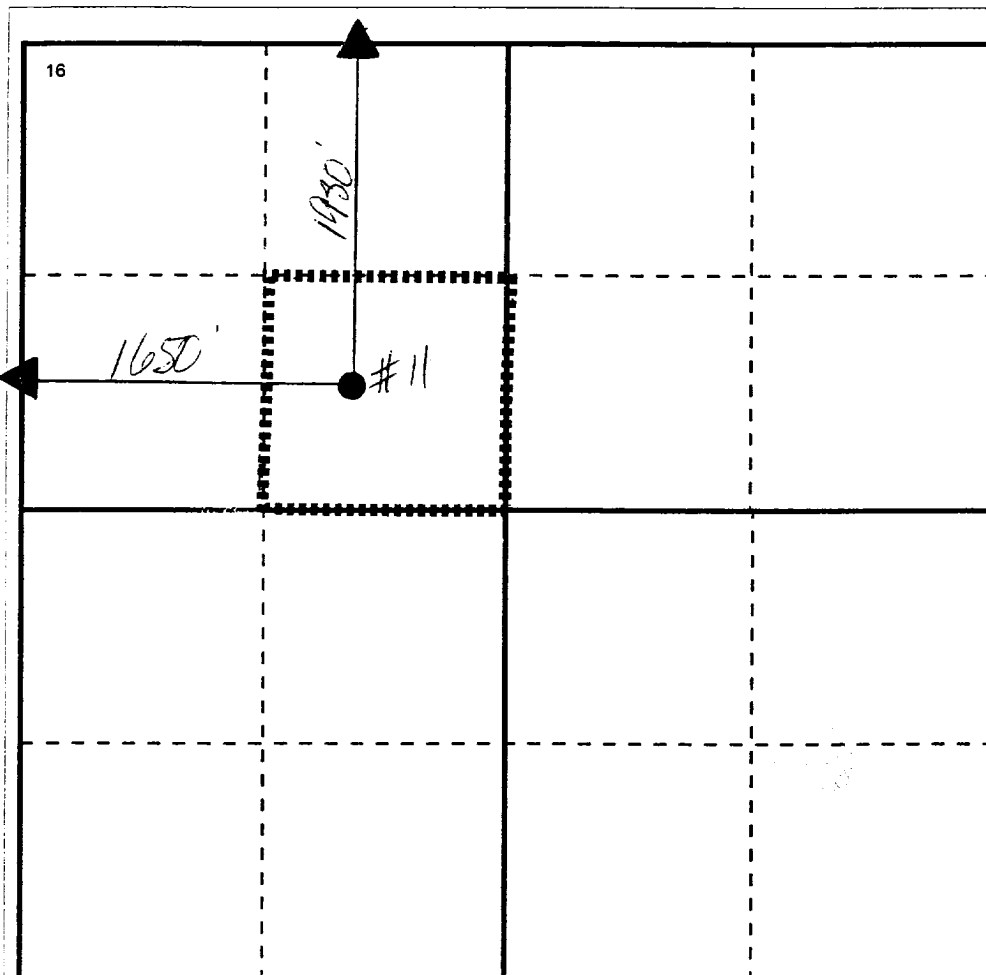
Ul or lot no	Section	Township	Range	Lot.Idn	Feet From The	North/South Line	Feet From The	East/West Line	County
F	24	25-S	37-E		1980'	NORTH	1650'	WEST	LEA

<sup>11</sup> Bottom Hole Location If Different From Surface

Ul or lot no.	Section	Township	Range	Lot.Idn	Feet From The	North/South Line	Feet From The	East/West Line	County
---------------	---------	----------	-------	---------	---------------	------------------	---------------	----------------	--------

<sup>12</sup> Dedicated Acre 40	<sup>13</sup> Joint or Infill No	<sup>14</sup> Consolidation Code	<sup>15</sup> Order No.
------------------------------------	-------------------------------------	----------------------------------	-------------------------

NO ALLOWABLE WILL BE ASSIGNED TO THIS COMPLETION UNTIL ALL INTERESTS HAVE BEEN CONSOLIDATED  
OR A NON-STANDARD UNIT HAS BEEN APPROVED BY THE DIVISION

<sup>17</sup> OPERATOR CERTIFICATION

I hereby certify that the information  
contained herein is true and complete to the  
best of my knowledge and belief

Signature

Printed Name

Denise Leake

Position

Regulatory Specialist

Date

3/7/2003

<sup>18</sup> SURVEYOR CERTIFICATION

I hereby certify that the well location shown  
on this plat was plotted from field notes of  
actual surveys made by me or under my  
supervision, and that the same is true and  
correct to the best of my knowledge and  
belief.

Date Surveyed

Signature & Seal of  
Professional Surveyor

Certificate No.

0 330 660 990 1320 1650 1980 2310 2640 2000 1500 1000 500 0

# WELL DATA SHEET

FIELD: Justis

WELL NAME: A. B. Coates "C" Federal #11

FORMATION: Paddock

LOC: 1980' FNL & 1650' FWL  
TOWNSHIP: 25S  
RANGE: 37E  
LOT: F

SEC: 24  
COUNTY: Lea  
STATE: NM

GL:  
DF: 3075'

CURRENT STATUS: TA'd 12/17/97  
API NO: 30-025-11733  
REFNO: FB2691

## Surface Casing

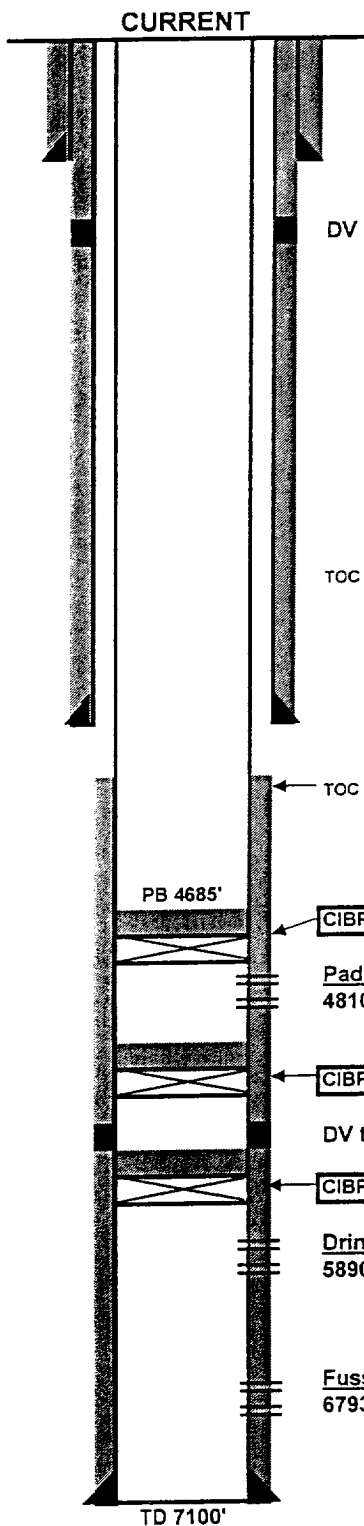
13-3/8" 48# & 36#  
Set @ 538' w/550 sx cmt  
17-1/2" hole to 546'  
Circ cmt to surface

## Intermediate Casing

9-5/8" 36# & 32.6#  
Set @ 3349' w/1300 sx cmt  
12-1/4" hole to 3350'  
Circ cmt to surface

## Production Casing

7", 23# J-55  
Set @ 7099' w/600 sx cmt  
8-3/4" hole to 7100'  
Circ cmt to 3560' (TS)



Spud Date: 4/11/58

Date of Completion: 5/20/58

Initial Completion: Dual completion in Drinkard/Fusselman

DV tool @ 889'

TOC @ 2000' by Temp Survey

TOC @ 3560'

PB 4685'

CIBP set @ 4720' w/35' cmt on top

Paddock Perfs  
4810-86'

Status  
below CIBP

CIBP set @ 5010' w/35' cmt on top

DV tool @ 5604'

CIBP set @ 5710' w/35' cmt on top

Drinkard Perfs  
5890-5930'

Status  
below CIBP

Fusselman Perfs  
6793-6898'

Status  
below CIBP

TD 7100'

# WELL DATA SHEET

T RIVERS/QUEEN/

GRAYBURG

FORMATION: ~~Paddock~~

FIELD: ~~Justa~~ LANGLEIE MATTIX

WELL NAME: A. B. Coates "C" Federal #11

LOC: 1980' FNL & 1650' FWL  
TOWNSHIP: 25S  
RANGE: 37E  
LOT: F

SEC: 24  
COUNTY: Lea  
STATE: NM

GL:  
DF: 3075'

CURRENT STATUS: TA'd 12/17/97  
API NO: 30-025-11733  
REFNO: FB2691

PROPOSED  
CURRENT

## Surface Casing

13-3/8" 48# & 36#  
Set @ 538' w/550 sx cmt  
17-1/2" hole to 546'  
Circ cmt to surface

Spud Date: 4/11/58

Date of Completion: 5/20/58

Initial Completion: Dual completion in Drinkard/Fusselman

DV tool @ 889'

TOC @ 2000' by Temp Survey

## Intermediate Casing

9-5/8" 36# & 32.6#  
Set @ 3349' w/1300 sx cmt  
12-1/4" hole to 3350'  
Circ cmt to surface

TOC @ 3100'  
LANGLIE MATTIX PERFS  
3246 - 3442'

PB 4685'

CIBP set @ 4720' w/35' cmt on top

Paddock Perfs  
4810-86'

Status  
below CIBP

CIBP set @ 5010' w/35' cmt on top

DV tool @ 5604'

CIBP set @ 5710' w/35' cmt on top

Drinkard Perfs  
5890-5930'

Status  
below CIBP

## Production Casing

7", 23# J-55  
Set @ 7099' w/600 sx cmt  
8-3/4" hole to 7100'  
Circ cmt to 3560' (TS)

Fusselman Perfs  
6793-6898'

Status  
below CIBP

TD 7100'