

This form is not to  
be used for reporting  
packer leakage tests  
in Northwest New Mexico

NEW MEXICO OIL CONSERVATION COMMISSION

SOUTHEAST NEW MEXICO PACKER LEAKAGE TEST

3-NMOCC

Operator <b>GETTY OIL COMPANY</b>			Lease <b>A. B. COATES "C"</b>			Well No. <b>19</b>	
Location of Well	Unit <b>P</b>	Sec <b>24</b>	Twp <b>25-S</b>	Rge <b>C</b>	County <b>LEA</b>		
Name of Reservoir or Pool			Type of Prod (Oil or Gas)	Method of Prod Flow, Art Lift	Prod. Medium (Tbg or Csg)	Choke Size	
Upper Compl	<b>JUSTIS BLINEBRY</b>		<b>OIL</b>	<b>FLOW</b>	<b>TUBING</b>	<b>---</b>	
Lower Compl	<b>JUSTIS TURN-DRINKARD</b>		<b>OIL</b>	<b>PUMP</b>	<b>TUBING</b>	<b>---</b>	

FLOW TEST NO. 1

Both zones shut-in at (hour, date): 8:00 A.M., 3-4-74

Well opened at (hour, date): 8:00 A.M., 3-5-74      Upper Completion      Lower Completion

Indicate by ( X ) the zone producing.....XXX.....

Pressure at beginning of test.....90.....250

Stabilized? (Yes or No).....yes.....yes

Maximum pressure during test.....90.....250

Minimum pressure during test.....90.....250

Pressure at conclusion of test.....90.....250

Pressure change during test (Maximum minus Minimum).....0.....0

Was pressure change an increase or a decrease?.....NO CHANGE.....NO CHANGE

Well closed at (hour, date): 8:00 A.M., 3-6-74      Total Time On Production 24 HOURS

Oil Production      Gas Production

During Test: 0 bbls; Grav. 37.0; During Test 0 MCF; GOR

Remarks \*\* WELL PRESSURE IS TOO LOW TO FLOW.

FLOW TEST NO. 2

Well opened at (hour, date): 8:00 A.M., 3-7-74      Upper Completion      Lower Completion

Indicate by ( X ) the zone producing.....XXX.....

Pressure at beginning of test.....90.....250

Stabilized? (Yes or No).....YES.....YES

Maximum pressure during test.....90.....300

Minimum pressure during test.....90.....50

Pressure at conclusion of test.....90.....50

Pressure change during test (Maximum minus Minimum).....0.....250

Was pressure change an increase or a decrease?.....NO CHANGE.....BOTH

Well closed at (hour, date): 8:00 A.M., 3-8-74      Total time on Production 24 HOURS

Oil Production      Gas Production

During Test: 9 bbls; Grav. 35.2; During Test 28 MCF; GOR 3,111

Remarks

I hereby certify that the information herein contained is true and complete to the best of my knowledge.

Approved 19  
New Mexico Oil Conservation Commission

Operator GETTY OIL COMPANY

By C.L. Wade      ORIGINAL SIGNED BY: C. L. Wade

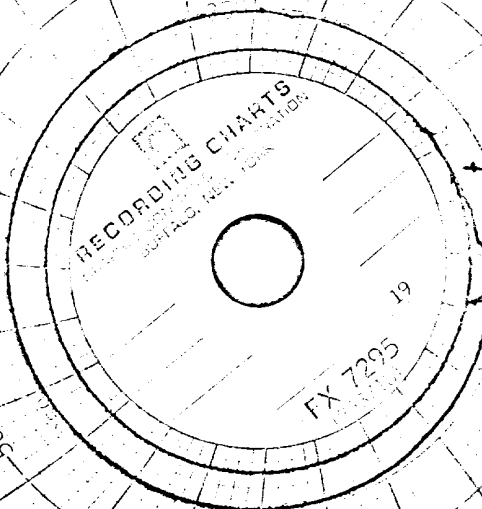
By  
Title

Title AREA SUPERINTENDENT

Date MAY 1, 1974

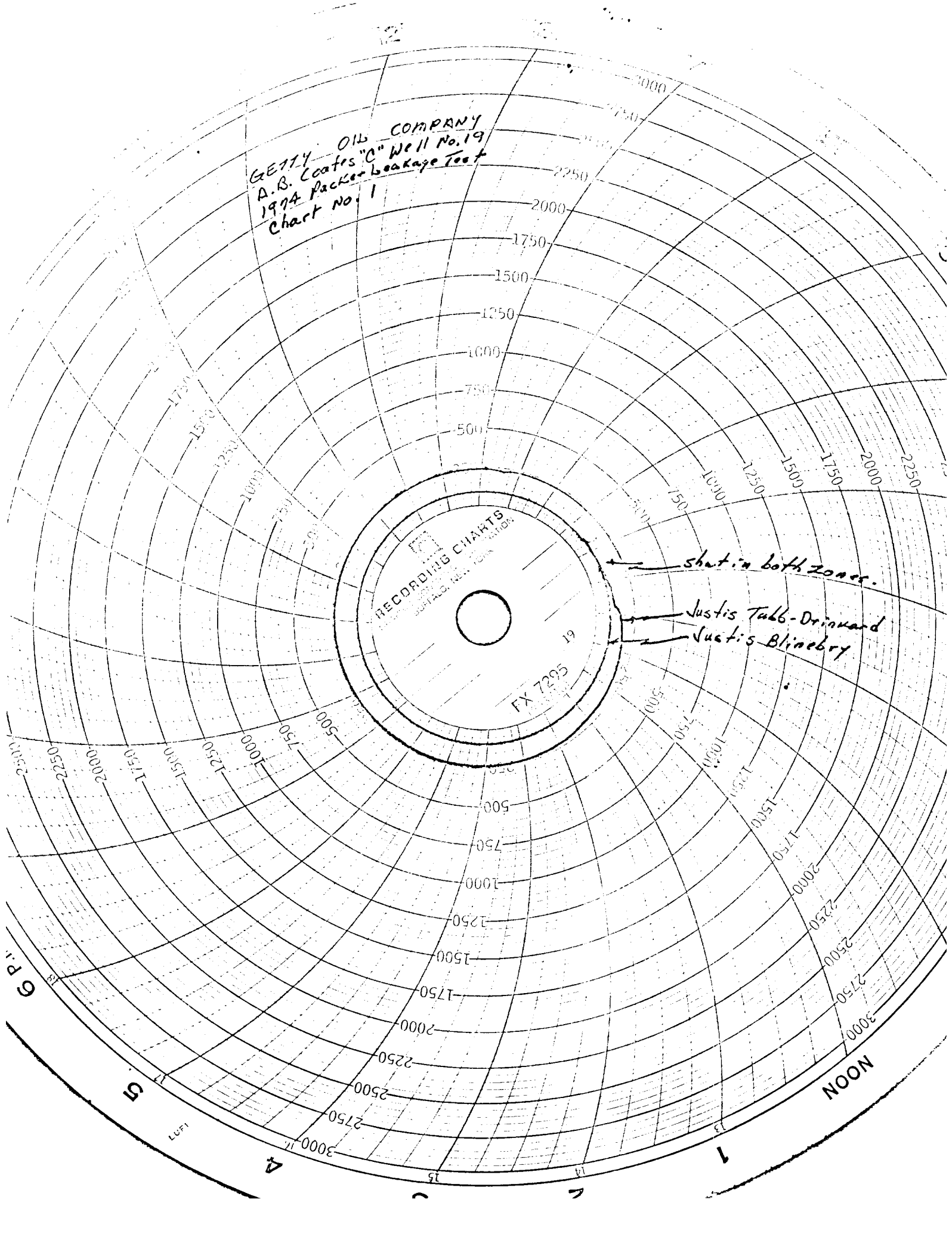
HBS/bh

GETTY OIL COMPANY  
A.B. Coates "C" Well No. 19  
1974 Packer Leakage Test  
Chart No. 1



shut in both zones.

Justis Tubb-Drinnard  
Justis Blinberry



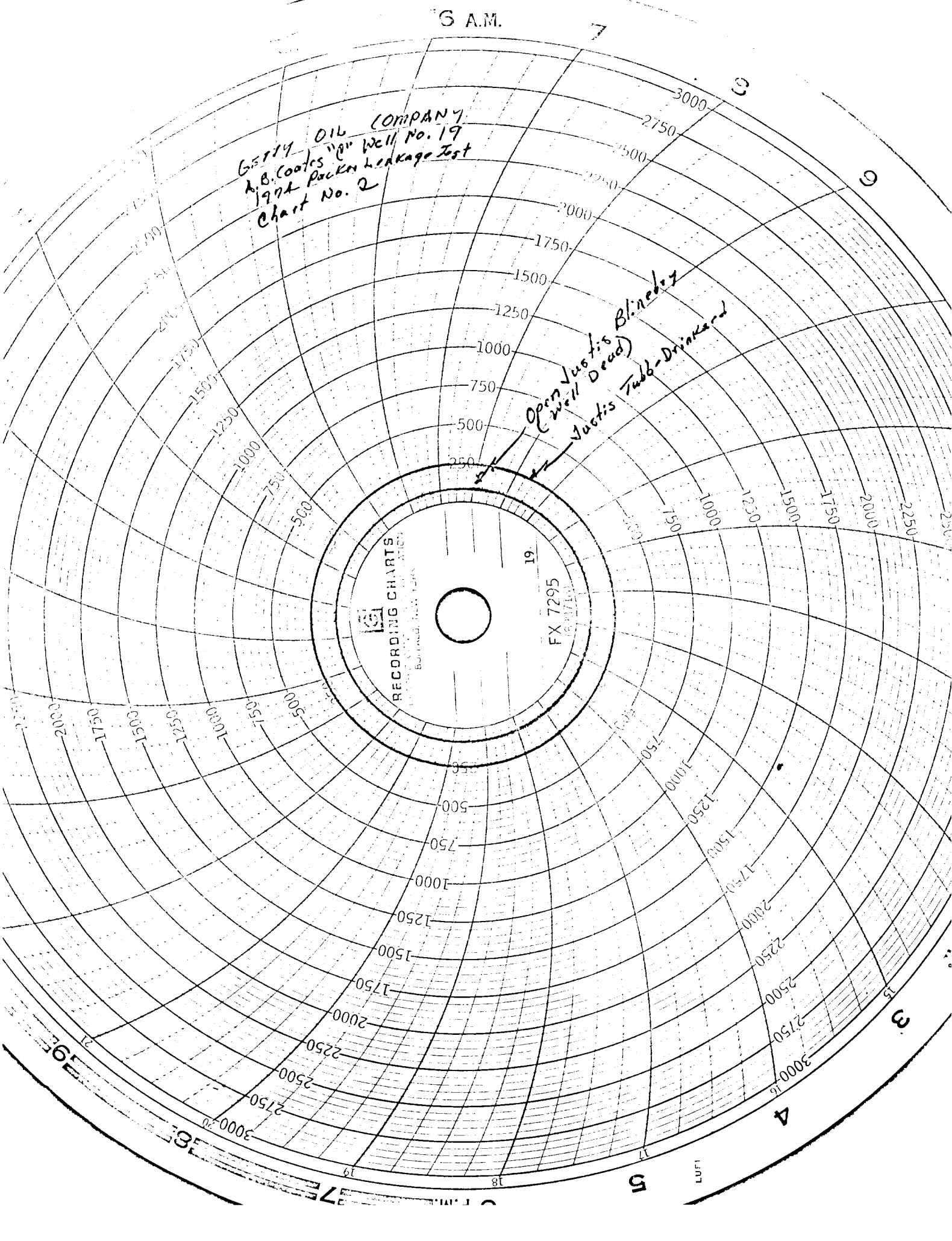
6 A.M.

GRIFFIN OIL COMPANY  
A.B. Coates "D" Well No. 19  
19th Packer Leakage Test  
Chart No. 2

Open Justis Blinches  
(Well Dead)  
Justis Tub-Drillard

RECORDING CHARTS  
Burroughs, Inc. New York

19.  
FX 7295  
(500/100)



GETTY OIL COMPANY  
A.B. Cont. Well No. 19  
JUSTIS BLINERY GOR TEST

APCO  
RECORDING CHARTS

LEASE METER \_\_\_\_\_ PLATE \_\_\_\_\_  
ON \_\_\_\_\_ OFF \_\_\_\_\_  
19 \_\_\_\_\_ 19 \_\_\_\_\_  
LOCATION \_\_\_\_\_  
REMARKS \_\_\_\_\_

P50 W100  
Los Angeles, California

DIFFERENTIAL  
PRESSURE

6 A.M. 7 A.M. 8 A.M. 9 A.M. 2 P.M. 3 P.M. 4 P.M. 5 P.M. 6 P.M. 7 P.M.

RECORDING CHARTS

LEASE  
METER

# PLATE

ON i M

**OFF.**

LOCATION

REMARKS

P50 W100

Los Angeles, California

PRINTED  
BY  
[illegible]

5 A.M.

7

8

9

10

3

4

5

19

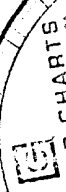
18

6 P.M.

GETTY OIL COMPANY  
A.B. Coates "C" Well No. 19  
1994 Parker Leakage Test  
Chart No. 3

Shut in ducts Blinded

ducts Tub-Drinker



RECORDING CHARTS, INC.  
GRAPHIC ARTS & PHOTOGRAPHY  
BUFFALO, NEW YORK

19

FX 7295  
(898718)

2000

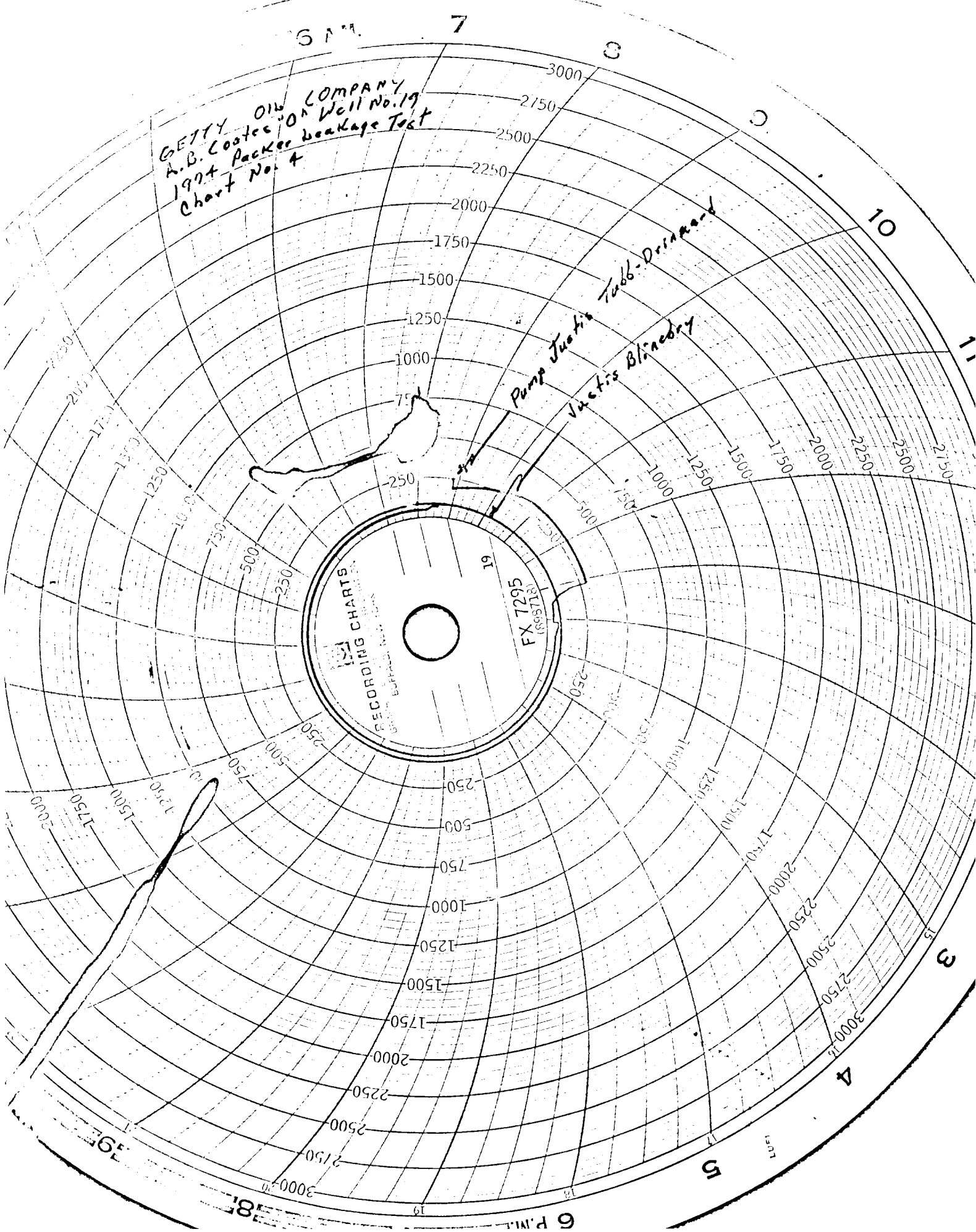
2000

2000

2000

2000

GETTY OIL COMPANY  
A.B. Coates Well No. 19  
1974 Packer Leakage Test  
Chart No. 4



152 RECORDING CHARTS

FX 7295  
(198718)

19

6 AM

7

8

9

10

11

3

4

5

6 P.M.

18

19

GETTY OIL COMPANY  
A.B. Coates "D" Well No. 19  
JUSTIS TUBB - DRINKER GOR TEST

