

NEW MEXICO OIL CONSERVATION COMMISSION
SOUTHEAST NEW MEXICO PACKER LEAKAGE TEST

Operator GETTY OIL COMPANY				Lease JUSTIS MC KEE UNIT A. B. COATES "C"		Well 121 No. 21
Location of Well	Unit J	Sec 24	Twp 25-S	Rge 37-E	County LEA	
	Name of Reservoir or Pool	Type of Prod (Oil or Gas)	Method of Prod Flow, Art Lift	Prod. Medium (Tbg or Csg)	Choke Size	
Upper Compl	JUSTIS BLINBRY	OIL	FLOW	TUBING	20/64	
Middle Compl	JUSTIS MONTOYA	OIL	FLOW	TUBING	-	
Lower Compl	JUSTIS MC KEE	OIL	FLOW	TUBING	-	

FLOW TEST NO. 1

All zones shut-in at (hour, date): **8:00 A.M., 4-12-71**

Well opened at (hour, date): **8:00 A.M., 4-13-71**

	Upper Completion	Middle Completion	Lower Completion
Indicate by (X) the zone producing.....	375	0	XXX
Pressure at beginning of test.....	YES	YES	YES
Stabilized? (Yes or No).....	400	0	450
Maximum pressure during test.....	375	0	445
Minimum pressure during test.....	400	0	445
Pressure at conclusion of test.....	25	0	5
Pressure change during test (Maximum minus Minimum).....	INCREASE	NO CHANGE	DECREASE
Was pressure change an increase or a decrease?.....	Total Time on Production 24 Hours		

Well closed at (hour, date): **8:00 A.M., 4-14-71**

Oil Production _____ Gas Production _____

During Test: **0** bbls; Grav. **-**; During Test **-** MCF; GOR **-**

Remarks **JUSTIS MC KEE WELL NO. 121 IS NIO AND IS NOT CONNECTED TO HEADER.**

FLOW TEST NO. 2

Well opened at (hour, date): **8:00 A.M., 4-15-71**

	Upper Completion	Middle Completion	Lower Completion
Indicate by (X) the zone producing.....	450	0	350
Pressure at beginning of test.....	YES	YES	YES
Stabilized? (Yes or No).....	450	0	350
Maximum pressure during test.....	200	0	350
Minimum pressure during test.....	200	0	350
Pressure at conclusion of test.....	250	0	0
Pressure change during test (Maximum minus Minimum).....	DECREASE	NO CHANGE	NO CHANGE
Was pressure change an increase or a decrease?.....	Total Time on Production 24 Hours		

Well closed at (hour, date): **8:00 A.M., 4-16-71**

Oil Production _____ Gas Production _____

During Test **26** bbls; Grav. **38.3**; During Test **257** MCF; GOR **9,885**

Remarks _____

FLOW TEST NO. 3

Well opened at (hour, date): **8:00 A.M., 4-17-71**

	Upper Completion	Middle Completion	Lower Completion
Indicate by (X) the zone producing.....	575	0	400
Pressure at beginning of test.....	YES	YES	YES
Stabilized? (Yes or No).....	600	0	400
Maximum pressure during test.....	575	0	400
Minimum pressure during test.....	600	0	400
Pressure at conclusion of test.....	25	0	0
Pressure change during test (Maximum minus Minimum).....	INCREASE	NO CHANGE	NO CHANGE
Was pressure change an increase or a decrease?.....	Total Time on Production 24 Hours		

Well closed at (hour, date): **8:00 A.M., 4-18-71**

Oil Production _____ Gas Production _____

During Test **0** bbls; Grav. **-**; During Test **0** MCF; GOR **-**

Remarks **JUSTIS MONTOYA IS NIO AND IS NOT CONNECTED TO HEADER.**

I hereby certify that the information herein contained is true and complete to the best of my knowledge. **MAY 7 1971**

Approved _____ 19
New Mexico Oil Conservation Commission
By _____
Title **SUPERVISOR DISTRICT**

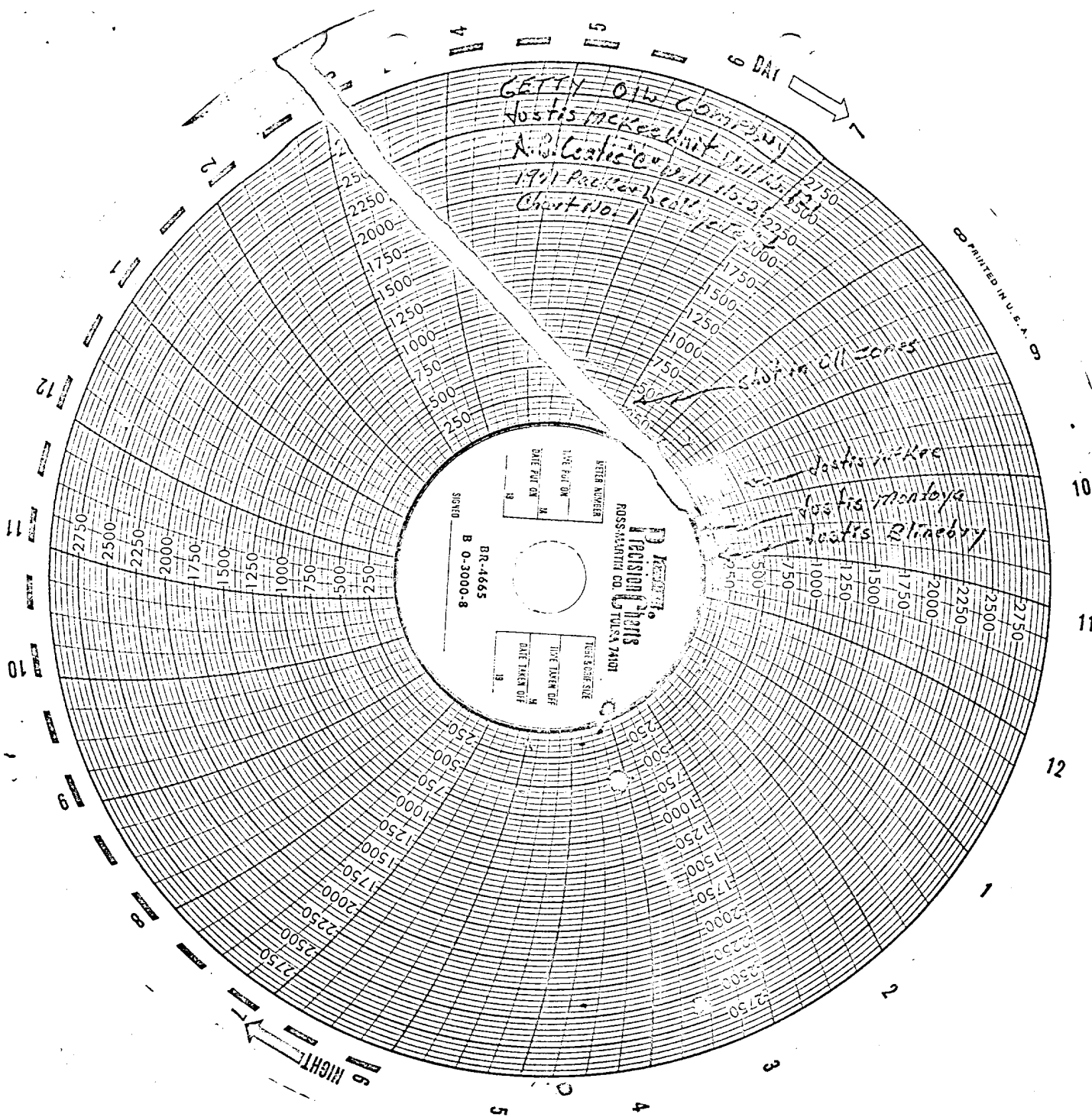
Operator **GETTY OIL COMPANY**
By _____
Title **C.L. WADE, AREA SUPERINTENDENT**
Date **MAY 4, 1971**

ORIGINAL SIGNED BY:
C. L. Wade

RECEIVED

MAY 10 1971

OIL CONSERVATION COMM.
HOBBS, N. M.



DAY

PRINTED IN U.S.A.

Getty Oil Company
Nashua, New Hampshire
1991 Packer Lease No. 121
Chart No. 2

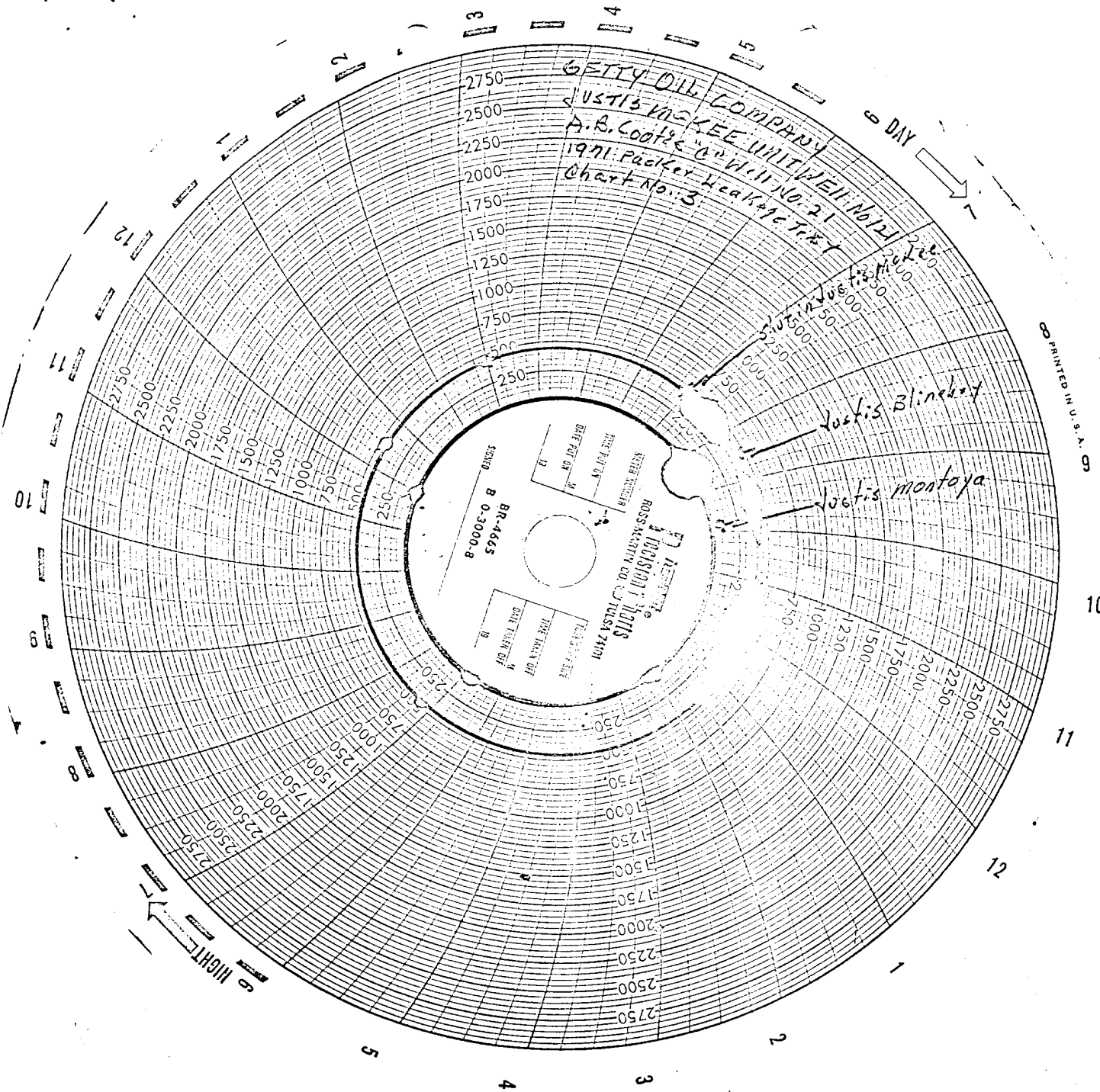
ROSS MARTIN
TULSA 74137

METER NUMBER
TIME PUT ON
DATE

TUBE DUMP SIZE
TIME TAKEN OFF
DATE

SIGNED
B-0-2000-6

NIGHT



GETTY OIL COMPANY
JUSTIS MCKEE UNIT WELL No. 21
A.R. Coats

1971 Packer Headage Test
Chart No. 3

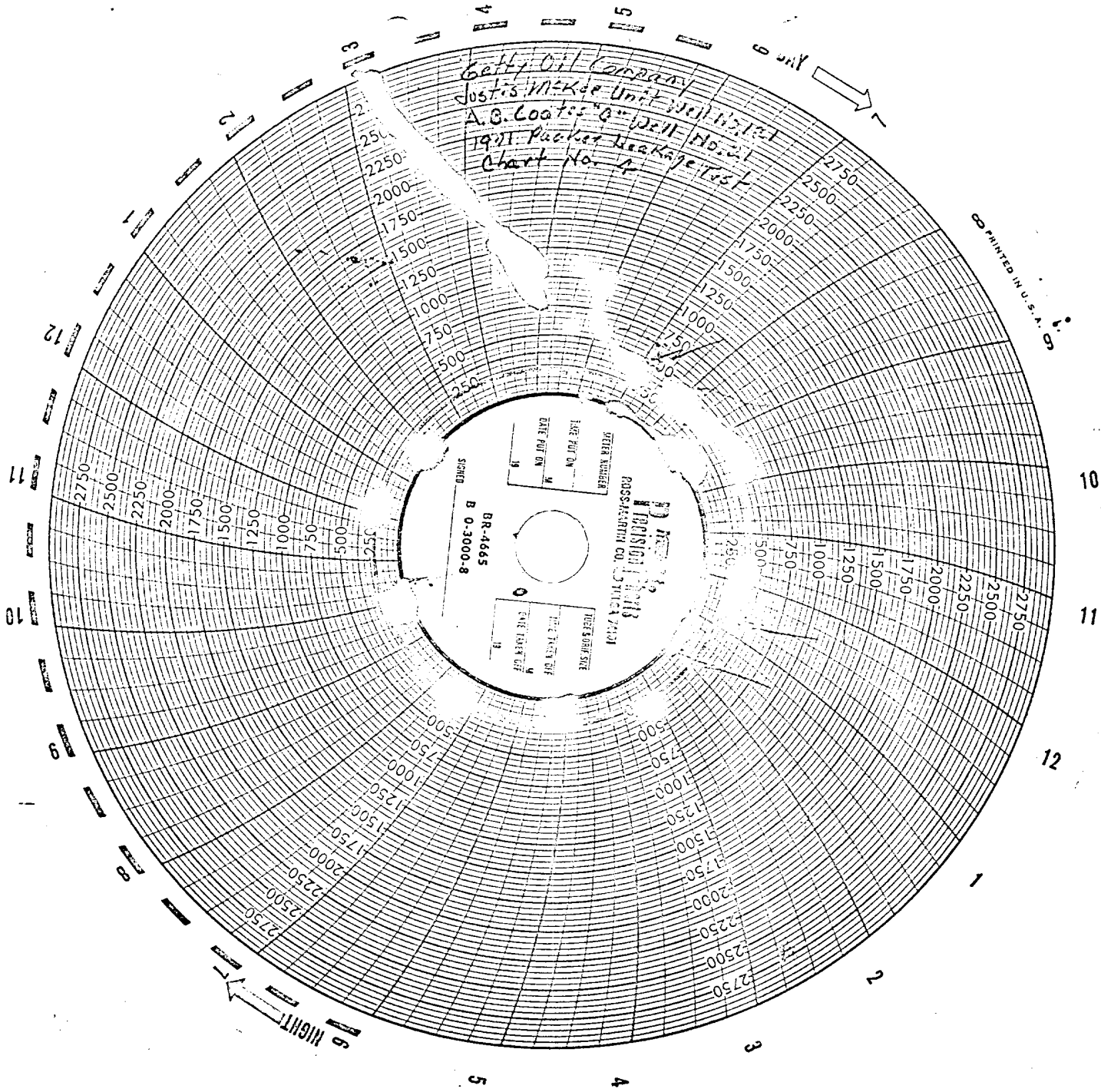
BR-4665
B 0.3000.8
ROSS-MCKEE CO. TULSA, OKLA.

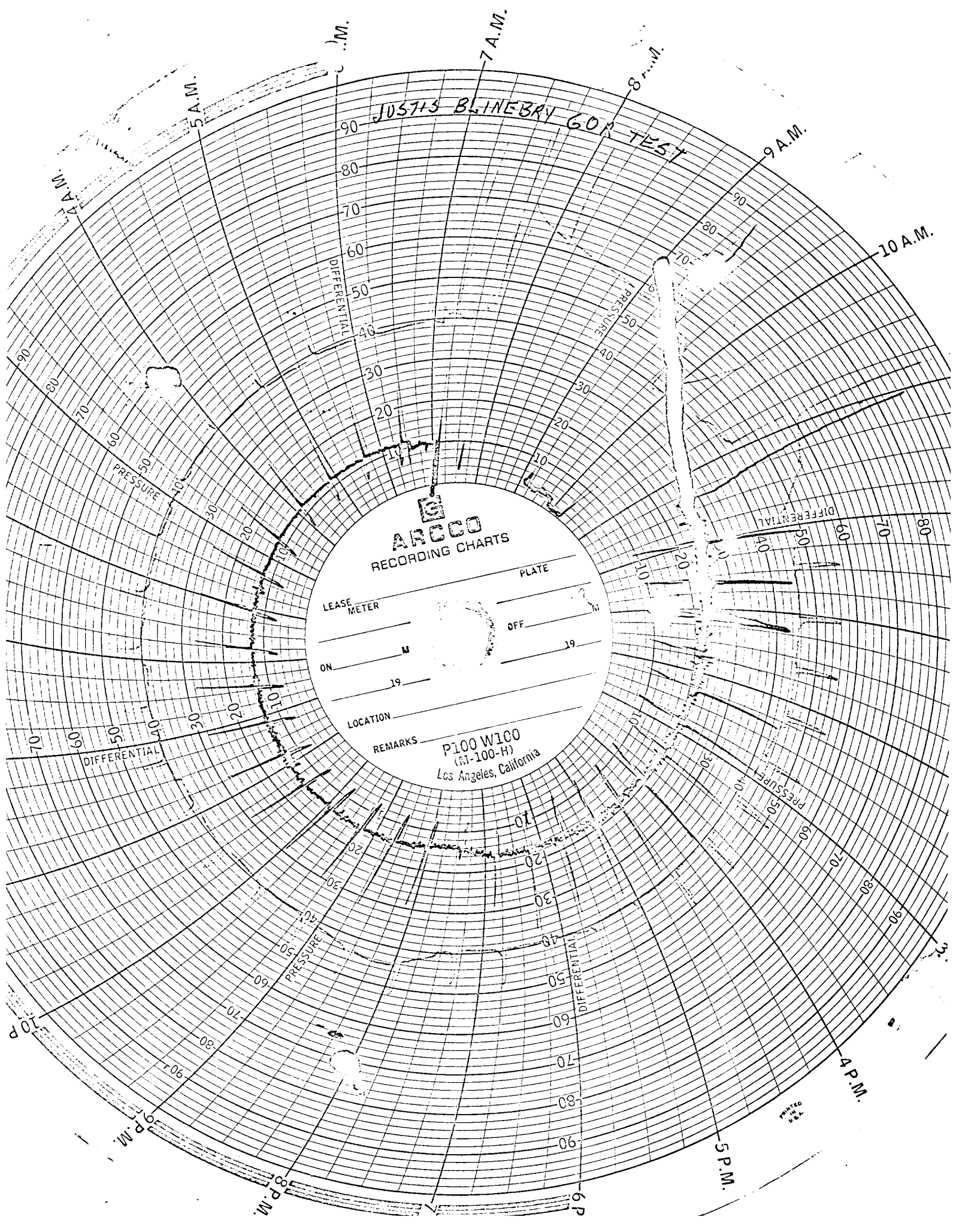
Justis Blinckert
Justis montoya

PRINTED IN U.S.A.

Getty Oil Company
Justis McKee Unit Well No. 121
A.C. Coates 8" Well No. 121
1921 Packer Leakage Test
Chart No. 4

PRINTED IN U.S.A.





JUSTIS BLINEBRY 60P TEST

ARCCO
RECORDING CHARTS

LEASE	PLATE
METER	
ON	OFF
19	19

LOCATION
REMARKS
P100 W100
(M-100-H)
Los Angeles, California

