

DISTRICT I
P.O. Box 1980, Hobbs, NM 88241-1980
DISTRICT II
P.O. Box Drawer DD, Artesia, NM 88211-0719
DISTRICT III
1000 Rio Brazos Rd., Aztec, NM 87410
DISTRICT IV
P.O. Box 2088, Santa Fe, NM 87504-2088

State of New Mexico
Energy, Minerals and Natural Resources Department

OIL CONSERVATION DIVISION

P.O. Box 2088
Santa Fe, New Mexico 87504-2088

Form C-101
Revised February 10, 1994
Instructions on back
Submit to Appropriate District Office
State Lease - 6 Copies
Fee Lease - 5 Copies
☐ AMENDED REPORT

APPLICATION FOR PERMIT TO DRILL, RE-ENTER, DEEPEN, PLUGBACK, OR ADD A ZONE

¹ Operator Name and Address TEXACO EXPLORATION & PRODUCTION INC. 205 E. Bender, HOBBS, NM 88240		² OGRID Number 022351
⁴ Property Code 010913	⁵ Property Name COATES, A. B. -C-	³ API Number 30 025 11744
		⁶ Well No. 22

⁷ Surface Location									
UI or lot no.	Section	Township	Range	Lot.Idn	Feet From The	North/South Line	Feet From The	East/West Line	County
B	24	25S	37E		660	NORTH	2310	EAST	LEA

⁸ Proposed Bottom Hole Location If Different From Surface									
UI or lot no.	Section	Township	Range	Lot.Idn	Feet From The	North/South Line	Feet From The	East/West Line	County
⁹ Proposed Pool 1 MID JUSTIS ABO GAS POOL					¹⁰ Proposed Pool 2				

¹¹ Work Type Code A	¹² WellType Code G	¹³ Rotary or C.T. R	¹⁴ Lease Type Code S	¹⁵ Ground Level Elevation
¹⁶ Multiple No	¹⁷ Proposed Depth 6785'	¹⁸ Formation ABO	¹⁹ Contractor PRIDE	²⁰ Spud Date 9/3/96

²¹ Proposed Casing and Cement Program					
SIZE OF HOLE	SIZE OF CASING	WEIGHT PER FOOT	SETTING DEPTH	SACKS OF CEMENT	EST. TOP
17.5	13-3/8"	36#	533'	550	CIRC
12-1/4"	9-5/8"	32#, 36#	3306'	1100	1885'
8-3/4"	7"	23#	6868'	500	TOC 2845'

²² Describe the proposed program. If this application is to DEEPEN or PLUG BACK give the data on the present productive zone and proposed new productive zone. Describe the blowout prevention program, if any. Use additional sheets if necessary.

- 1) RUPU. Pull rods & pump. Install BOP. TOH tubing.
- 2) Run casing scraper to 6785", clean out.
- 3) Perf Abo w/2JSPF 6202'-6540'.
- 4) Set RBP @ 6620, set packer @ 6100'
- 5) Acidize & frac Upper & Lower Abo perfs.
- 6) Test Abo Gas zone.
- 7) Apply for downhole commingle permit Montoya/Abo.

Permit Expires 1 Year From Approval
Date Unless Drilling Underway

Adding

²³ I hereby certify that the rules and regulations of the Oil Conservation Division have been complied with and that the information given above is true and complete to the best of my knowledge and belief.

Signature *Paula S. Ives*
Printed Name Paula S. Ives

Title Engineering Assistant

Date 8/27/96

Telephone 397-0432

OIL CONSERVATION DIVISION

ORIGINAL SIGNED BY JERRY SEXTON
DISTRICT I SUPERVISOR
Approved By.

Title:

Approval Date: AUG 28 1996

Expiration Date:

Conditions of Approval:
Attached ☐

DISTRICT I
P.O. Box 1180, Hobbs, NM 88241-1980

DISTRICT II
P.O. Box Drawer DD, Artesia, NM 88211-0719

DISTRICT III
1000 Rio Brazos Rd., Aztec, NM 87410

DISTRICT IV
P.O. Box 2088, Santa Fe, NM 87504-2088

State of New Mexico
Energy, Minerals and Natural Resources Department

OIL CONSERVATION DIVISION

P.O. Box 2088
Santa Fe, New Mexico 87504-2088

Form C-102
Revised February 10, 1994
Instructions on back
Submit to Appropriate District Office
State Lease - 4 Copies
Fee Lease - 3 Copies
☐ AMENDED REPORT

WELL LOCATION AND ACREAGE DEDICATION PLAT

¹ API Number 30 025 11744	² Pool Code 96543	³ Pool Name MID JUSTIS ABO GAS POOL
⁴ Property Code 010913	⁵ Property Name COATES, A. B. -C-	⁶ Well No. 22
⁷ OGRID Number 022351	⁸ Operator Name TEXACO EXPLORATION & PRODUCTION INC.	⁹ Elevation

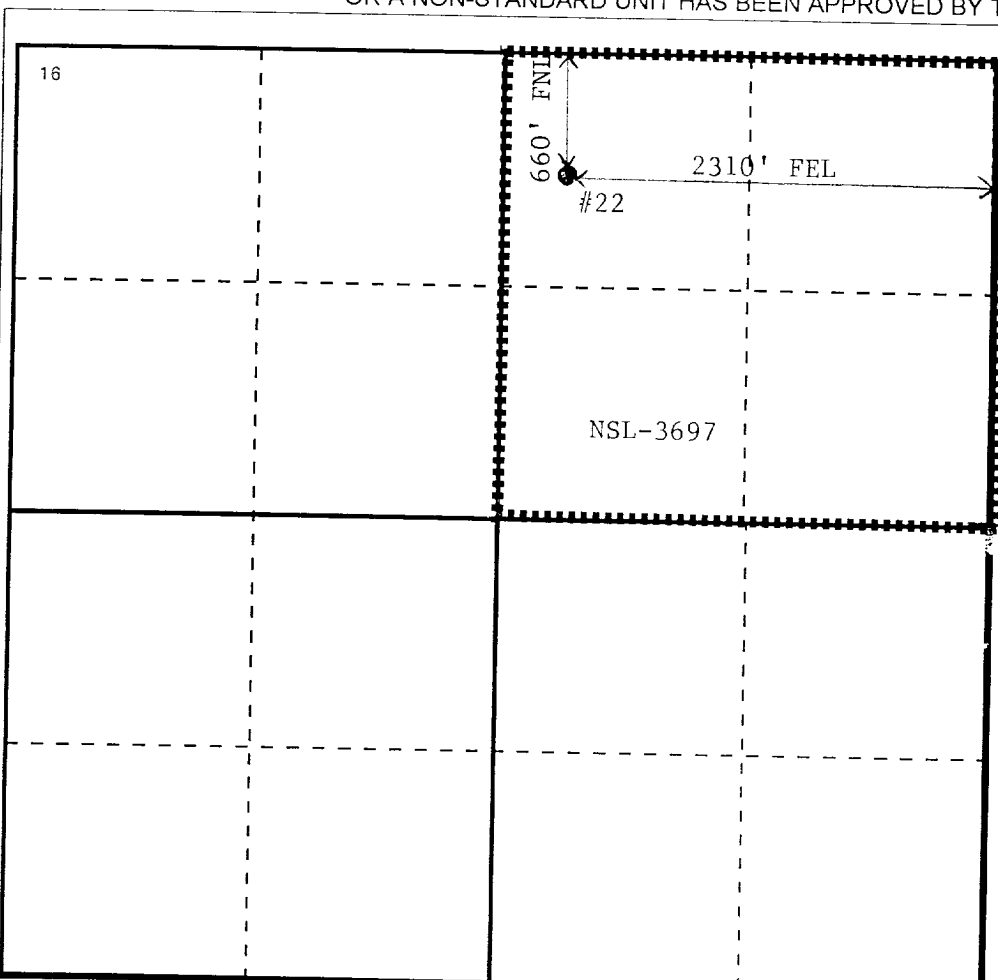
¹⁰ Surface Location

Ul or lot no. B	Section 24	Township 25S	Range 37E	Lot.Idn	Feet From The 660	North/South Line NORTH	Feet From The 2310	East/West Line EAST	County LEA
--------------------	---------------	-----------------	--------------	---------	----------------------	---------------------------	-----------------------	------------------------	---------------

¹¹ Bottom Hole Location If Different From Surface

Ul or lot no.	Section	Township	Range	Lot.Idn	Feet From The	North/South Line	Feet From The	East/West Line	County
¹² Dedicated Acres 160	¹³ Joint or Infill No	¹⁴ Consolidation Code	¹⁵ Order No.						

NO ALLOWABLE WILL BE ASSIGNED TO THIS COMPLETION UNTIL ALL INTERESTS HAVE BEEN CONSOLIDATED
OR A NON-STANDARD UNIT HAS BEEN APPROVED BY THE DIVISION



17 OPERATOR CERTIFICATION

I hereby certify that the information
contained herein is true and complete to the
best of my knowledge and belief

Signature

Printed Name

Paula S. Ives

Position

Engineering Assistant

Date

8/27/96

18 SURVEYOR CERTIFICATION

I hereby certify that the well location shown
on this plat was plotted from field notes of
actual surveys made by me or under my
supervision, and that the same is true and
correct to the best of my knowledge and
belief.

Date Surveyed

Signature & Seal of
Professional Surveyor

Certificate No.

0 330 660 990 1320 1650 1980 2310 2640 2000 1500 1000 500 0