

NEW MEXICO OIL CONSERVATION COMMISSION
SOUTHEAST NEW MEXICO PACKER LEAKAGE TEST

| | | | | | | | |
|--|---------------|------------------------------|----------------------------------|------------------------------|---------------|----------------|--|
| Operator Atlantic Richfield Company | | | Lease Carlson A Federal | | | Well No. #1 | |
| Location of Well | Unit I | Sec 23 | Twp 25-S | Rge 37-E | County Lea | | |
| Name of Reservoir or Pool | | Type of Prod (Oil or Gas) | Method of Prod Flow, Art Lift | Prod. Medium (Tbg or Csg) | Choke Size | | |
| Upper Compl | Blinebry | | Oil | Art Lift | Tbg | - | |
| Lower Compl | Tubb-Drinkard | | Oil | Flow | Tbg | 12/64 | |

FLOW TEST NO. 1

Both zones shut-in at (hour, date): 7:30 a.m. 2-23-70

| | | |
|--|-----------------------------|---------------------|
| Well opened at (hour, date): 7:30 a.m. 2-24-70 | Upper Completion | Lower Completion |
| Indicate by (X) the zone producing..... | X | |
| Pressure at beginning of test..... | 210 | 180 |
| Stabilized? (Yes or No)..... | No | No |
| Maximum pressure during test..... | 210 | 279 |
| Minimum pressure during test..... | 65 | 180 |
| Pressure at conclusion of test..... | 65 | 279 |
| Pressure change during test (Maximum minus Minimum)..... | -145 | +99 |
| Was pressure change an increase or a decrease?..... | decrease | increase |
| Well closed at (hour, date): 7:30 a.m. 2-25-70 | Total Time On Production | 24 hours |
| Oil Production | Gas Production | |
| During Test: 5 bbls; Grav. 37.5° | During Test 5 | MCF; GOR 1000 |

Remarks

FLOW TEST NO. 2

| | | |
|--|-----------------------------|---------------------|
| Well opened at (hour, date): 7:30 a.m. 2-26-70 | Upper Completion | Lower Completion |
| Indicate by (X) the zone producing..... | | X |
| Pressure at beginning of test..... | 212 | 350 |
| Stabilized? (Yes or No)..... | No | No |
| Maximum pressure during test..... | 348 | 350 |
| Minimum pressure during test..... | 212 | 48 |
| Pressure at conclusion of test..... | 348 | 48 |
| Pressure change during test (Maximum minus Minimum)..... | +136 | -302 |
| Was pressure change an increase or a decrease?..... | increase | decrease |
| Well closed at (hour, date) 7:30 a.m. 2-27-70 | Total time on Production | 24 hours |
| Oil Production | Gas Production | |
| During Test: 6 bbls; Grav. 36.7° | During Test 12 | MCF; GOR 2000 |

Remarks

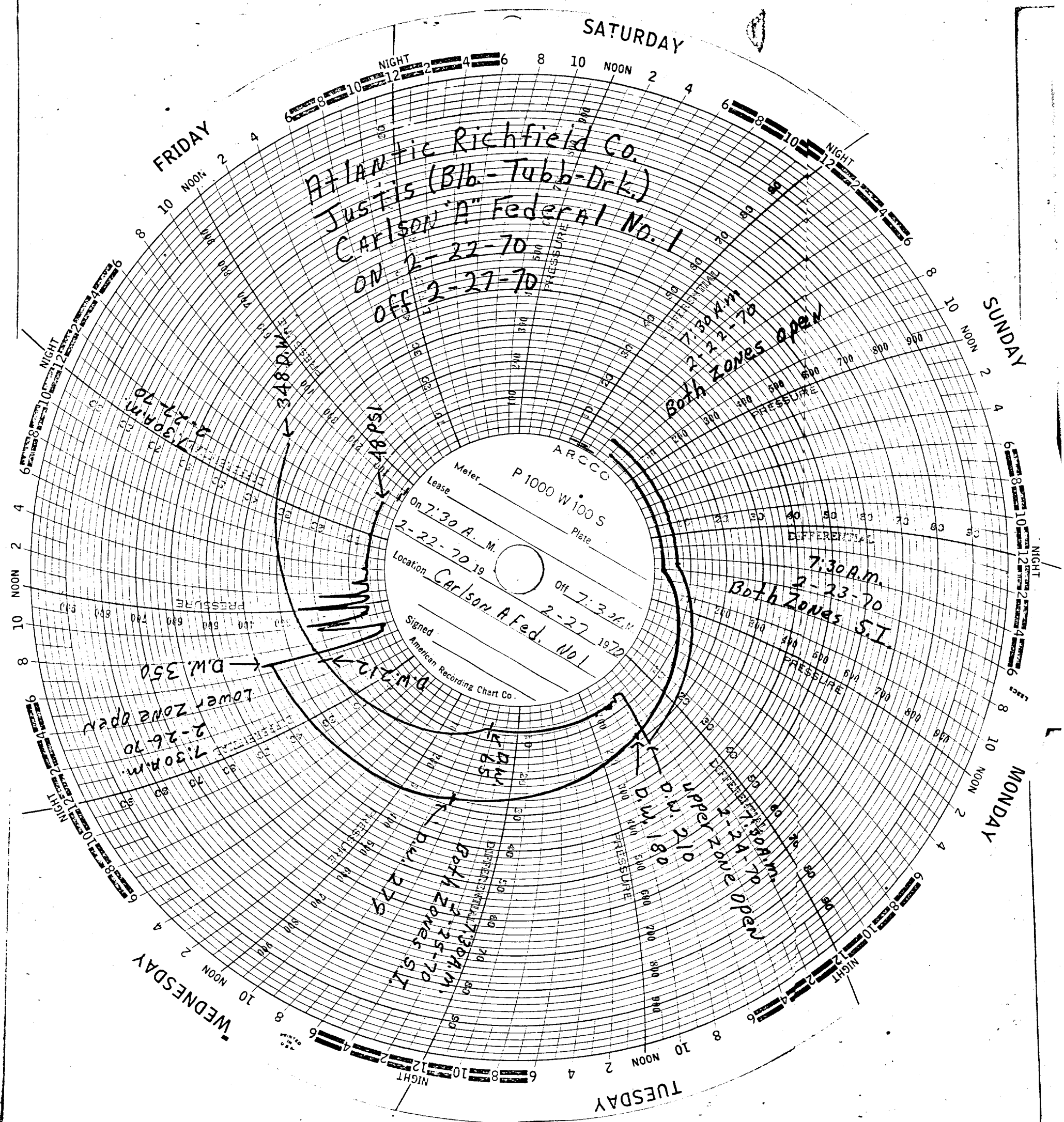
I hereby certify that the information herein contained is true and complete to the best of my knowledge.

Approved _____ 19 _____
New Mexico Oil Conservation Commission

Operator Atlantic Richfield Company
By A. D. Kloxin
A. D. Kloxin

By _____
Title _____

Title District Production & Drilling Supt.
Date 2-27-70



Atlantic Richfield Co.
Justis (Blb-Tubb-Drk.)
CARLSON A Federal No. 1
ON 2-22-70
OFF 2-27-70

ARCCO
Meter P 1000 W 100 S
Lease
On 7:30 A.M.
2-22-70 19
Location Carlson A Fed. No. 1
Off 7:30 A.M.
2-27-1970
Signed
American Recording Chart Co.

Both zones open
7:30 A.M.
2-22-70

Both zones S.I.
7:30 A.M.
2-23-70

Upper zone open
7:30 A.M.
2-24-70

Both zones S.I.
7:30 A.M.
2-25-70

Lower zone open
7:30 A.M.
2-26-70

D.W. 350

D.W. 212

D.W. 180

D.W. 275

WEDNESDAY

TUESDAY

MONDAY

SUNDAY

SATURDAY

FRIDAY