

July 26, 1937

over past several years. Total depth is 2795' and 8-1/4" production string of casing was set at 2615'. Initial production 25,000,000 Cu. Ft. daily.

(4) Harry Leonard J. W. Justis well No. 1, Sec. 20, T25S, R37E, was completed May 5, 1936, at plugged back total depth of 2970'. Production casing string was set at 2660'. Initial production was 20 barrels oil with 2,500,000 Cu. Ft gas daily.


(5) The Sun Oil Company W. T. Lanehart well No. 1, Sec. 20, T25S, R37E, was completed June 18, 1936, at total depth of 2757' with initial production of 22,000,000 Cu. Ft. gas per day.

(6) Jal Natural Gas Company's Justis well No. 1, a diagonal NE offset to our Lanehart lease was recently completed at total depth of 3020' blowing 14 million Cu. Ft. gas with 65 barrels oil per day. On July 22nd, this well was producing 9 Million Cu. Ft. gas and 55 bbls. oil per day. 7" Production string was set at 2890'.

We respectfully request that you grant permission to use sufficient gas from the bradenhead of our W. T. Lanehart well No. 1 to gas lift oil production from this same well for the reasons set out above.

Yours very truly,

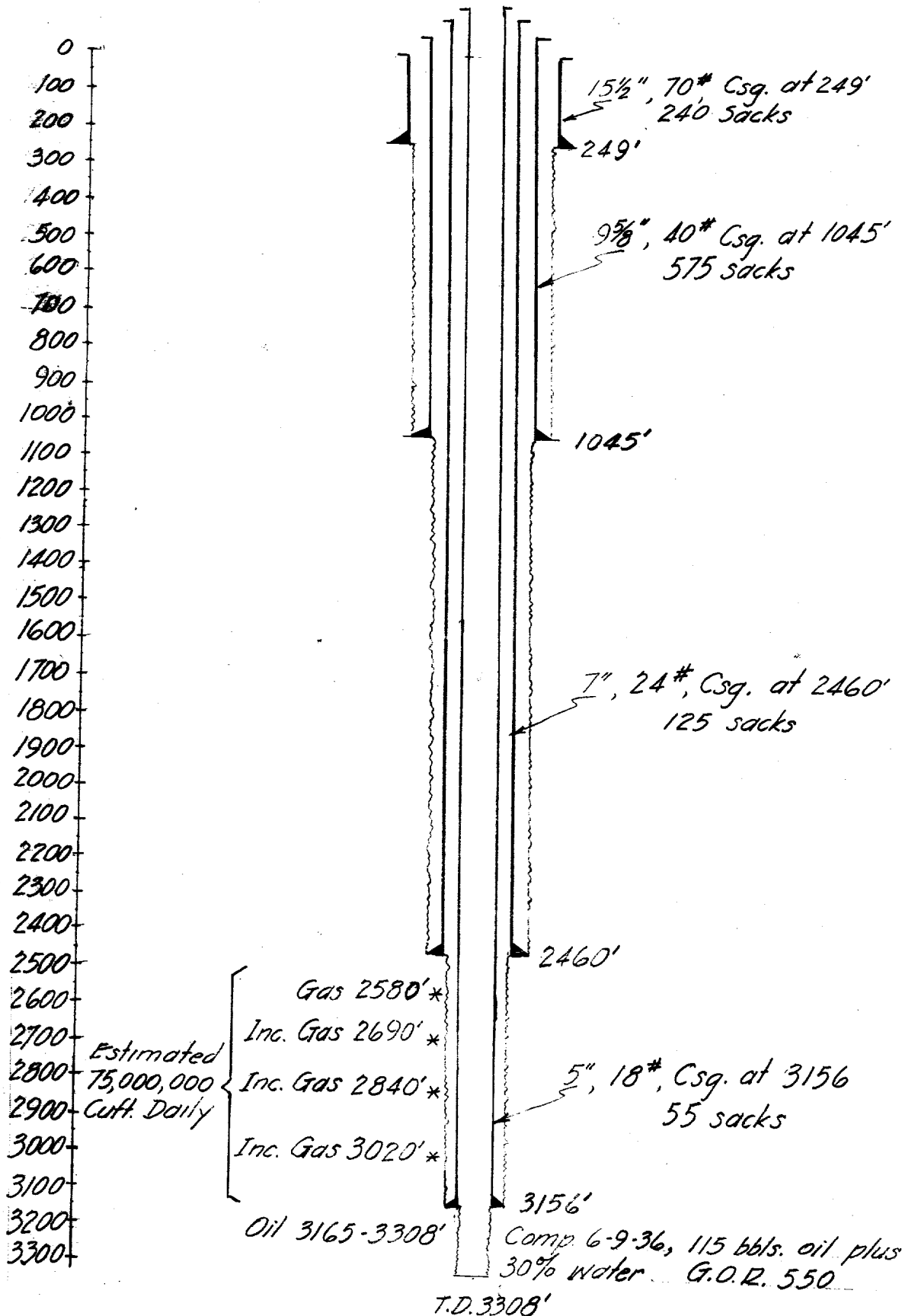
THE TEXAS COMPANY
Producing Dept.,

By 
District Supt.

JKH:WRJ

THE TEXAS COMPANY

THE TEXAS COMPANY'S W.T. LANEHART
WELL No. 1 Sec. 29, T 25 S, R 31 E EAST
LANGLIE AREA, LEA CO., NEW MEXICO.



J.K.H.

