

NEW MEXICO OIL CONSERVATION COMMISSION

Santa Fe, New Mexico

REQUEST FOR PERMISSION TO CONNECT WITH PIPE LINE

This request should be SUBMITTED IN TRIPPLICATE. See instructions in the Rules and Regulations of the Commission.

Midland, Texas

Place

August 16, 1938

Date

OIL CONSERVATION COMMISSION.

Santa Fe, New Mexico.

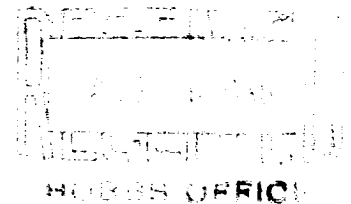
DUPLICATE

Gentlemen:

Permission is requested to connect Calbertson & Irwin, Inc. - George F. Dabbs, Estate
Company or Operator LeaseWell No. 1 in NE NW of Sec. 35, T. 25S, R. 37E, N.M.P.M.Longlie Field, Lea County, with the pipe line of theShell Petroleum Corporation Houston, Texas
Pipe Line Co. AddressStatus of land (State, Government or privately owned) privately ownedLocation of tank battery SW $\frac{1}{4}$ of NE $\frac{1}{4}$ of NW $\frac{1}{4}$ of Section 35Description of tanks 2 tall 500 bbl. bolted steelLogs of the above wells were filed with the Oil Conservation Commission August 13, 19 38All other requirements of the Commission have (~~been~~) been complied with. (Cross out incorrect words.)

Additional information:

Oil to be delivered by operator to present Shell gathering system.



Yours truly,

Permission is hereby granted to make pipe line connections requested above.

OIL CONSERVATION COMMISSION,

By L.M.

Title _____

Date AUG 15 1938CULBERTSON & IRWIN, INC.

Owner or Operator

By Ed CarmichaelPosition TreasurerAddress Box 1071, Midland, Texas