

Submit 3 Copies
to Appropriate
District Office

State of New Mexico
Energy, Minerals and Natural Resources Department

Form C-103
Revised 1-1-89

DISTRICT I
P.O. Box 1980, Hobbs, NM 88240

DISTRICT II
P.O. Drawer DD, Artesia, NM 88210

DISTRICT III
1000 Rio Brazos Rd., Aztec, NM 87410

OIL CONSERVATION DIVISION
P.O. Box 2088
Santa Fe, New Mexico 87504-2088

WELL API NO. 30-025-12220
5. Indicate Type of Lease STATE <input type="checkbox"/> FEE <input checked="" type="checkbox"/>
6. State Oil & Gas Lease No.
7. Lease Name or Unit Agreement Name West Dollarhide Drinkard Unit
8. Well No. 2
9. Pool name or Wildcat Dollarhide Tubb Drinkard

SUNDRY NOTICES AND REPORTS ON WELLS
(DO NOT USE THIS FORM FOR PROPOSALS TO DRILL OR TO DEEPEN OR PLUG BACK TO A
DIFFERENT RESERVOIR. USE "APPLICATION FOR PERMIT"
(FORM C-101) FOR SUCH PROPOSALS.)

1. Type of Well: OIL WELL <input checked="" type="checkbox"/> GAS WELL <input type="checkbox"/> OTHER	2. Name of Operator Texaco Exploration and Production Inc.
3. Address of Operator P. O. Box 730 Hobbs, NM 88240	4. Well Location Unit Letter C : 990 Feet From The NORTH Line and 2305 Feet From The WEST Line Section 19 Township 24S Range 38E NMPM Lea County
10. Elevation (Show whether DF, RKB, RT, GR, etc.) 3174' GR	

11. Check Appropriate Box to Indicate Nature of Notice, Report, or Other Data	
NOTICE OF INTENTION TO:	SUBSEQUENT REPORT OF:
PERFORM REMEDIAL WORK <input type="checkbox"/>	REMEDIAL WORK <input type="checkbox"/>
TEMPORARILY ABANDON <input type="checkbox"/>	ALTERING CASING <input type="checkbox"/>
PULL OR ALTER CASING <input type="checkbox"/>	COMMENCE DRILLING OPNS. <input type="checkbox"/>
OTHER: <input type="checkbox"/>	PLUG AND ABANDONMENT <input type="checkbox"/>
	CASING TEST AND CEMENT JOB <input type="checkbox"/>
	OTHER: <input type="checkbox"/>

12. Describe Proposed or Completed Operations (Clearly state all pertinent details, and give pertinent dates, including estimated date of starting any proposed work) SEE RULE 1103.

- 1) Inform NMOCD 24 hours prior to commencement of plugging.
- 2) MIRU. Bleed any casing pressure and flow into frac tank. Break casing collar valve loose. Install BOP and rig up 'CS' Hydril work string.
- 3) GIH and tag obstruction at 4710'. Drill through scale or fill and tag packer at 5434'. Drill out top slips and push down below perfs at 6556' if possible. Establish pump in rate and set retainer. Squeeze perfs with 60 sx class 'C' cement. Sting out and spot 2 sx on top. POH. Fill casing with salt gel mud; 10# brine-25# gel/ Bbl. POH.
- 4) By wireline, set CIBP at intermediate casing shoe and cap with 35' cement. Run CBL and find top of cement. Perf 2 squeeze holes and POH.
- 5) GIH with work string. Establish circulation through squeeze perfs and pump 375 sx class 'C' cement to the surface.
Pump 15 sx from 2550'-2450' across base of salt section. WOC. Tag plug.
Pump 15 sx from 1400'-1300'. WOC. Tag plug.
Pump 45 sx from 426' to the surface.
- 6) Fill casing annulus from surface with 1" tubing if necessary.
- 7) Cut off wellhead and install marker. Clean location and restore surface.

I hereby certify that the information above is true and complete to the best of my knowledge and belief.

SIGNATURE Robert McNaughton TITLE Production Engineer DATE 10-30-92

TYPE OR PRINT NAME Robert McNaughton TELEPHONE NO. 397-0428

(This space for State Use)

ORIGINAL SIGNED BY JERRY SEXTON
DISTRICT I SUPERVISOR

APPROVED BY _____ TITLE _____ DATE _____

CONDITIONS OF APPROVAL, IF ANY:

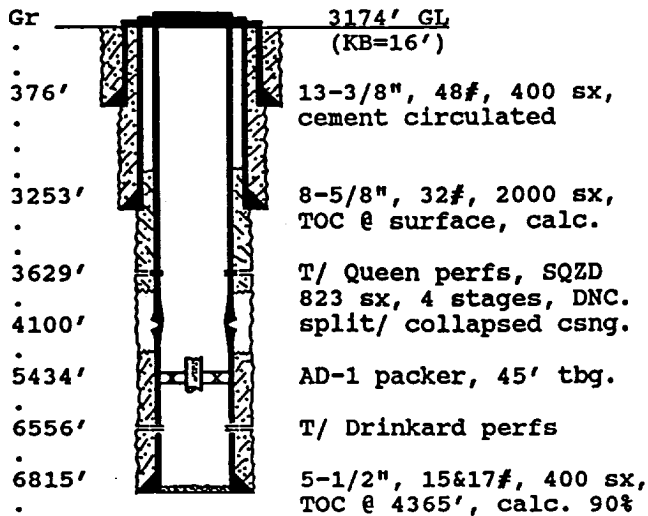
NOV 03 '92

PRODUCING WELL DATA SHEET

PO-90M
(3/92)

OPERATOR: Texaco Exploration & Production Inc. WELL: West Dollarhide Drinkard Unit #2
FOOTAGE LOCATION: 990 FNL, 2305 FWL Sec./Twn/Rng: Unit C, Sec 19, T-24-S, R-38-E
Former Texas Company W.L. Stephens Estate #1, Dual comp. Lea County, New Mexico

SCHEMATIC



Salt 1350'-2500'
Queen 3591'
Tubbs 6184'
Drinkard 6455'
Abo 6723'

TABULAR DATA

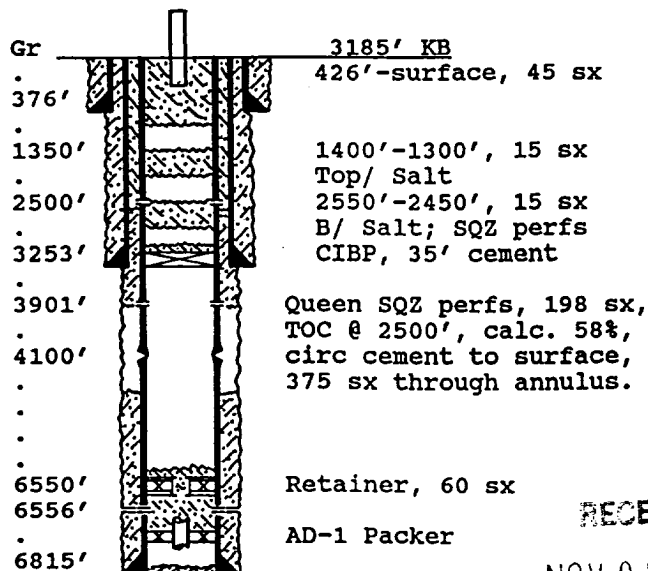
Surface Casing: Set at: 376'
Size 13-3/8", 48# Cemented with 400 sx.
TOC surface ' determined by circulation
Hole Size 17-1/2" Spud Date: 7-13-57
Intermediate casing: Set at: 3253'
Size 8-5/8", 32# Cemented with 2000 sx.
TOC surface ' determined by calculation
Hole Size 12-1/4"
Production Casing: Set at: 6815'
Size 5 1/2, 15.5x17# Cemented with 400 sx.
TOC 4365' / ?? ' determined by calc./sqzd
Hole Size 7-7/8, SQZD Queen perfs: 3629'-3819'
Producing Interval: Lower Drinkard and Abo
6556' to 6780' through: perforations
Tubing: AD-1 PKR & 1-1/2 its tbq at 5434'

Recommended Plug and Abandon Procedure

PO-113
(3/92)

OPERATOR: Texaco Exploration & Production Inc WELL: West Dollarhide Drinkard Unit #2
FOOTAGE LOCATION: 990 FNL, 2305 FWL Sec./Twn/Rng: Unit C, Sec 19, T-24-S, R-38-E
Lea County, New Mexico

SCHEMATIC



TABULAR DATA

Surface Plugs:
Size 426'-surface Cemented with 45 sx.
Class 'C' Cement, 1.32 ft³ / sx
Intermediate Plugs:
Size 1400'-1300' Cemented with 15 sx.
2550'-2450' 15 sx
3250' CIBP, 35' cement
Class 'C' Cement, 1.32 ft³ / sx
Producing Zone Plugs:
Size Retainer Cemented with 60 sx.
AD-1 packer cannot be pushed down or pumped
through, confer with NMOCD; spot cement on
top of packer as per NMOCD instructions.

NOV 02 1992
OCD HOBS OFFICE