

UNITED STATES
DEPARTMENT OF THE INTERIOR
BUREAU OF LAND MANAGEMENTFORM APPROVED
Budget Bureau No. 1004-0135
Expires: March 31, 19935. Lease Designation and Serial No.
NM-10185

6. If Indian, Allottee or Tribe Name

7. If Unit or CA, Agreement Designation

8. Well Name and No.
W. Dollarhide Drk U #329. API Well No.
30-025-23901-1225410. Field and Pool or Exploratory Area
Dollarhide Drinkard

11. County or Parish, State

Lea Co. NM

SUNDRY NOTICES AND REPORTS ON WELLS

Do not use this form for proposals to drill or to deepen or reentry to a different reservoir.
Use "APPLICATION FOR PERMIT—" for such proposals

SUBMIT IN TRIPLICATE

1. Type of Well

☒ Oil Well ☐ Gas Well ☐ Other

2. Name of Operator

Texaco Exploration and Production Inc.

3. Address and Telephone No.

P.O. Box 730, Hobbs, NM 88240

(505)397-0428

4. Location of Well (Footage, Sec., T., R., M., or Survey Description)

Unit Letter O, 330' FSL & 1980' FEL

Sec 30, T24S, R38E

12. CHECK APPROPRIATE BOX(s) TO INDICATE NATURE OF NOTICE, REPORT, OR OTHER DATA

TYPE OF SUBMISSION

- ☒
- Notice of Intent
-
- ☐
- Subsequent Report
-
- ☐
- Final Abandonment Notice

TYPE OF ACTION

- ☒
- Abandonment
-
- ☐
- Recompletion
-
- ☐
- Plugging Back
-
- ☐
- Casing Repair
-
- ☐
- Altering Casing
-
- ☐
- Other _____
-
- ☐
- Change of Plans
-
- ☐
- New Construction
-
- ☐
- Non-Routine Fracturing
-
- ☐
- Water Shut-Off
-
- ☐
- Conversion to Injection
-
- ☐
- Dispose Water

(Note: Report results of multiple completion on Well Completion or Recompletion Report and Log form.)

13. Describe Proposed or Completed Operations (Clearly state all pertinent details, and give pertinent dates, including estimated date of starting any proposed work. If well is directionally drilled, give subsurface locations and measured and true vertical depths for all markers and zones pertinent to this work.)*

- 1) Inform BLM and NMOCD 24 hours prior to commencement of plugging.
- 2) GIH with 5-1/2" retainer, set @ 6350'.
- 3) Squeeze Drinkard with 75 sx class "C" cement. Spot 50' cement on top.
- 4) By wireline, set CIBP at 3800'. Set retainer at 3100'. Squeeze Queen with 125 sx class "C", spot 50' cement on top.
- 5) Pump 25 sx from 2750'-2600' across base of salt section. WOC. Tag plug.
Pump 25 sx from 1350'-1200' across top of salt section. WOC. Tag plug.
Pump 35 sx from 350' to the surface.
- 6) Refill casing annulus from surface with 1" tubing if necessary.
- 7) Cut off wellhead and install marker. Clean location and restore surface.

RE: WFX - 646

14. I hereby certify that the foregoing is true and correct

Signed R. McNaughtonTitle Production EngineerDate 10-29-93

(This space for Federal or State office use)

Approved by SignatureTitle PRODUCTION ENGINEERDate 11/29/93

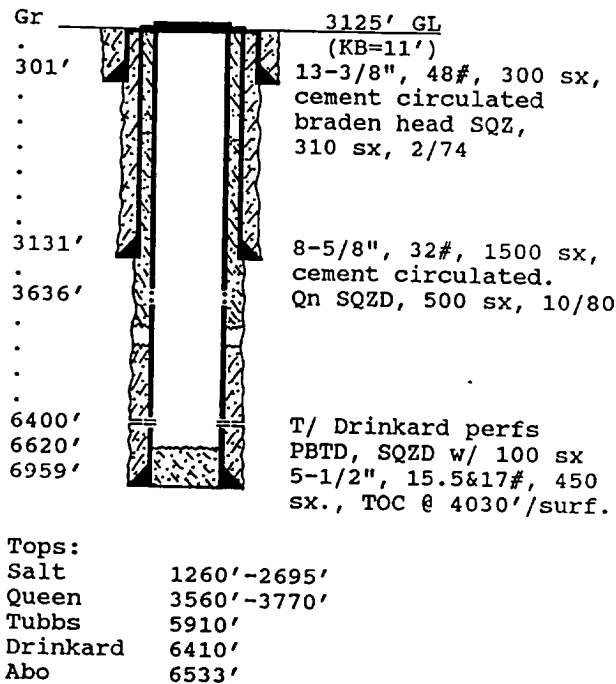
Conditions of approval, if any:

WELL DATA SHEET

PO-108
(4/93)

OPERATOR: Texaco Exploration & Production Inc. WELL: West Dollarhide Drinkard Unit #32
 FOOTAGE LOCATION: 330 FSL, 1980 FEL Sec./Twn/Rng: Unit O, Sec 30, T-24-S, R-38-E
Former Atlantic-Richfield McClure A #4 Lea County, New Mexico

SCHEMATIC



TABULAR DATA

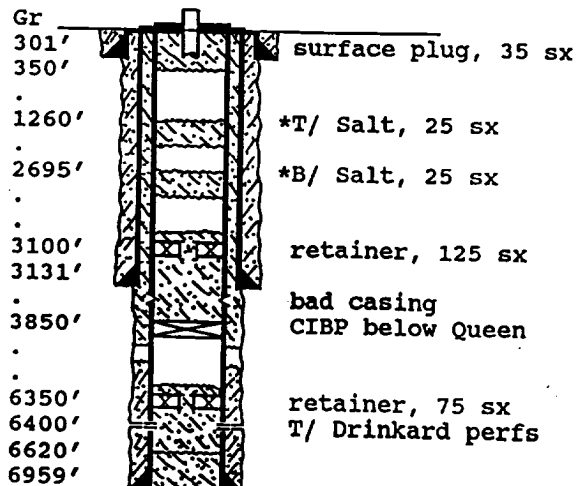
Surface Casing: Set at: 301'
 Size 13-3/8", 48# Cemented with 300 sx.
 TOC surface ' determined by circulated
 Hole Size 17-1/2" Spud Date: 6-16-53
 Intermediate casing: Set at: 3131'
 Size 8-5/8", 32# Cemented with 1500 sx.
 TOC surface ' determined by circulated
 Hole Size 11"
 Production Casing: Set at: 6959'
 Size 5-1/2, 15.5&17# Cemented with 450 sx.
 TOC 4030/surf. ' determined by temp./ SQZ.
 Hole Size 7-7/8
 Injection Interval: Lower Drinkard
6400 ' to 6484 ' through: perfs
 Tubing: _____

PROPOSED PLUG AND ABANDONMENT

PO-113
(10/93)

OPERATOR: Texaco Exploration & Production Inc. WELL: West Dollarhide Drinkard Unit #32
 FOOTAGE LOCATION: 330 FSL, 1980 FEL Sec./Twn/Rng: Unit O, Sec 30, T-24-S, R-38-E
Started water injection 9-28-93; 105 bwipd @ vac. Lea County, New Mexico

SCHEMATIC



TABULAR DATA

Surface Plug:
 Size 350'-surf. Cemented with 35 sx.
1350'-1200' 25 sx.
2750'-2600' 25 sx.
 * CIBPs capped w/ 35' cement may be substituted
 for these plugs depending on rig availability.
 Intermediate Plugs:
 Size retainer Cemented with 125 sx.
3850'-3100'
 use class "C" cement for all plugs, 1.32 ft³/sx
 Producing Zone Plug:
 Size retainer Cemented with 75 sx.