

Submit to Appropriate  
District Office  
State Lease - 6 copies  
Fee Lease - 5 copies

State of New Mexico  
Energy, Minerals and Natural Resources Department

Form C-101  
Revised 1-1-89

OIL CONSERVATION DIVISION

P.O. Box 2088  
Santa Fe, New Mexico 87504-2088

DISTRICT I  
P.O. Box 1980, Hobbs, NM 88240

DISTRICT II  
P.O. Drawer DD, Artesia, NM 88210

DISTRICT III  
1000 Rio Brazos Rd., Aztec, NM 87410

API NO. (assigned by OCD on New Wells)

30-025-12271

5. Indicate Type of Lease

STATE ☐

FEE ☒

6. State Oil & Gas Lease No.

APPLICATION FOR PERMIT TO DRILL, DEEPEN, OR PLUG BACK

1a. Type of Work:

DRILL ☐

RE-ENTER ☒

DEEPEN ☒

PLUG BACK ☐

b. Type of Well:

OIL  
WELL ☐

GAS  
WELL ☐

OTHER Water Injection

SINGLE  
ZONE ☒

MULTIPLE  
ZONE ☐

2. Name of Operator

Sirgo Operating, Inc.

8. Well No.

12

3. Address of Operator

P.O. Box 3531, Midland, Texas 79702

9. Pool name or Wildcat

Dollarhide Queen

4. Well Location

Unit Letter L : 1650 Feet From The South Line and 990 Feet From The West Line

Section 30

Township 24S

Range 38E

NMPM

Lea

County

10. Proposed Depth

4000'

11. Formation

Queen

12. Rotary or C.T.

Reverse

13. Elevations (Show whether DF, RT, GR, etc.)

3122' DF

14. Kind & Status Plug. Bond

Cash Statewide

15. Drilling Contractor

16. Approx. Date Work will start

June 1, 1989

17.

PROPOSED CASING AND CEMENT PROGRAM

SIZE OF HOLE	SIZE OF CASING	WEIGHT PER FOOT	SETTING DEPTH	SACKS OF CEMENT	EST. TOP
13-3/4"	* 9-5/8"	36#	290'	220	
8-3/4"	* 7"	17 & 20#	3750'	300	
6-1/8"	4-1/2"	10.50#	TD	400	

Sirgo Operating, Inc. plans to re-enter, deepen to 4000' and convert to water injection this P&A (5-31-73) Queen producer. New 4-1/2" casing will be run to TD and cemented to surface, the Queen zone will be selectively perforated and acidized, and a Baker AD-1 packer will be run on 2-3/8" tubing, set approximately 100' above the top perf.

\*Casing already present in wellbore.

IN ABOVE SPACE DESCRIBE PROPOSED PROGRAM: IF PROPOSAL IS TO DEEPEN OR PLUG BACK, GIVE DATA ON PRESENT PRODUCTIVE ZONE AND PROPOSED NEW PRODUCTIVE ZONE. GIVE BLOWOUT PREVENTER PROGRAM, IF ANY.

I hereby certify that the information above is true and complete to the best of my knowledge and belief.

SIGNATURE Bonnie Ottwater TITLE Production Technician DATE 4-21-89

TYPE OR PRINT NAME

TELEPHONE NO.

(This space for State Use)

ORIGINAL SIGNED BY JERRY SEXTON  
DISTRICT SUPERVISOR

APPROVED BY \_\_\_\_\_ TITLE \_\_\_\_\_ DATE \_\_\_\_\_

CONDITIONS OF APPROVAL, IF ANY:

APR 25 1989

WEX 570

004 114 1

**RECEIVED**

**APR 24 1989**

**OCD  
HOBBS OFFICE**

Submit to Appropriate  
District Office  
State Lease - 4 copies  
Fee Lease - 3 copies

State of New Mexico  
Energy, Minerals and Natural Resources Department.

Form C-102  
Revised 1-1-89

OIL CONSERVATION DIVISION

P.O. Box 2088  
Santa Fe, New Mexico 87504-2088

DISTRICT I  
P.O. Box 1980, Hobbs, NM 88240

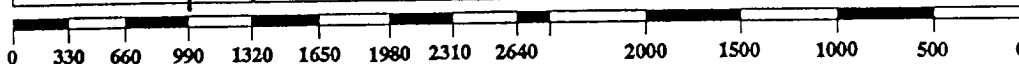
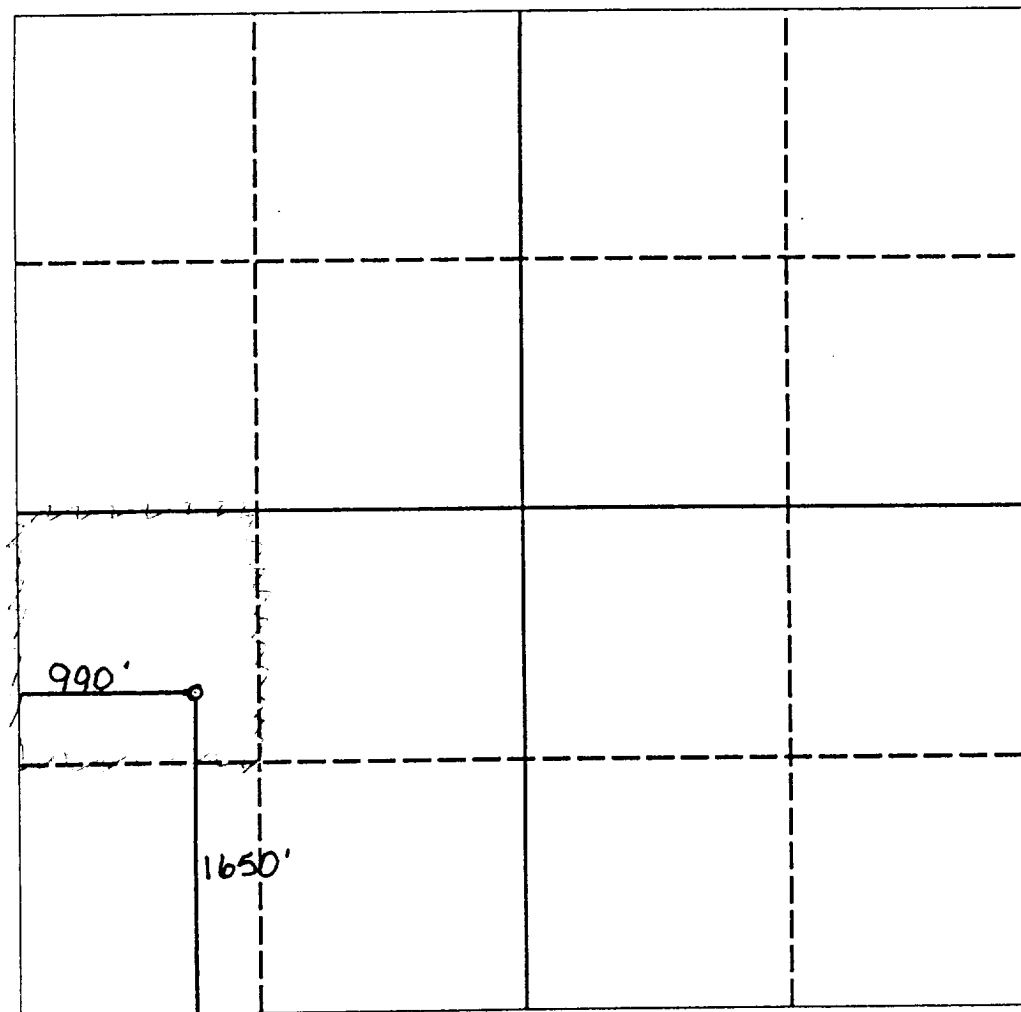
DISTRICT II  
P.O. Drawer DD, Artesia, NM 88210

DISTRICT III  
1000 Rio Brazos Rd., Aztec, NM 87410

WELL LOCATION AND ACREAGE DEDICATION PLAT

All Distances must be from the outer boundaries of the section

Operator Sirgo Operating, Inc.			Lease West Dollarhide Queen Sand Unit		Well No. 12
Unit Letter L	Section 30	Township 24S	Range 38E	County Lea	
Actual Footage Location of Well:					
1650 feet from the South line and		990 feet from the West line			
Ground level Elev. 3132'	Producing Formation Queen		Pool Dollarhide Queen	Dedicated Acreage: 40 Acres	
<p>1. Outline the acreage dedicated to the subject well by colored pencil or hachure marks on the plat below.</p> <p>2. If more than one lease is dedicated to the well, outline each and identify the ownership thereof (both as to working interest and royalty).</p> <p>3. If more than one lease of different ownership is dedicated to the well, have the interest of all owners been consolidated by communitization, unitization, force-pooling, etc.?</p> <p><input checked="" type="checkbox"/> Yes <input type="checkbox"/> No If answer is "yes" type of consolidation <u>Unitization, R-2356</u></p> <p>If answer is "no" list the owners and tract descriptions which have actually been consolidated. (Use reverse side of this form if necessary.)</p> <p>No allowable will be assigned to the well until all interests have been consolidated (by communitization, unitization, forced-pooling, or otherwise) or until a non-standard unit, eliminating such interest, has been approved by the Division.</p>					



<b>OPERATOR CERTIFICATION</b>	
I hereby certify that the information contained herein is true and complete to the best of my knowledge and belief.	
<u>Bonnie Atwater</u>	
Signature	
Bonnie Atwater	
Printed Name	
Production Technician	
Position	
Sirgo Operating, Inc.	
Company	
April 21, 1989	
Date	
<b>SURVEYOR CERTIFICATION</b>	
I hereby certify that the well location shown on this plat was plotted from field notes of actual surveys made by me or under my supervision, and that the same is true and correct to the best of my knowledge and belief.	
Date Surveyed	
ORIGINAL ON FILE	
Signature & Seal of Professional Surveyor	
Certificate No.	

RECEIVED

APR 24 1939

CCO  
MOBES OFFICE

# BOP

