

Submit 3 copies to Appropriate District Office

State of New Mexico Energy, Minerals and Natural Resources Department

Form C-103 Revised 1-1-89

DISTRICT I

P.O. Box 1980, Hobbs, NM 88240

DISTRICT II

P.O. Box Drawer DD, Artesia, NM 88210

DISTRICT III

1000 Rio Brazos Rd., Aztec, NM 87410

OIL CONSERVATION DIVISION

P.O. Box 2088

Santa Fe, New Mexico 87504-2088

WELL API NO.	30 025 12291
5. Indicate Type of Lease	STATE <input type="checkbox"/> FEE <input checked="" type="checkbox"/>
6. State Oil / Gas Lease No.	
7. Lease Name or Unit Agreement Name	WEST DOLLARHIDE DRINKARD UNIT
8. Well No.	65
9. Pool Name or Wildcat	DOLLARHIDE TUBB DRINKARD
10. Elevation (Show whether DF, RKB, RT,GR, etc.)	3117' GL

SUNDRY NOTICES AND REPORTS ON WELL (DO NOT USE THIS FORM FOR PROPOSALS TO DRILL OR TO DEEPEN OR PLUG BACK TO A DIFFERENT RESERVOIR. USE "APPLICATION FOR PERMIT" (FORM C-101) FOR SUCH PROPOSALS.)

1. Type of Well: OIL WELL GAS WELL OTHER water injection well

2. Name of Operator TEXACO EXPLORATION & PRODUCTION INC

3. Address of Operator P.O. BOX 730, HOBBS, NM 88240

4. Well Location Unit Letter J : 2090 Feet From The SOUTH Line and 1650 Feet From The EAST Line Section 31 Township 24S Range 38E NMPM LEA COUNTY

10. Elevation (Show whether DF, RKB, RT,GR, etc.) 3117' GL

11. Check Appropriate Box to Indicate Nature of Notice, Report, or Other Data

NOTICE OF INTENTION TO:		SUBSEQUENT REPORT OF:	
PERFORM REMEDIAL WORK <input type="checkbox"/>	PLUG AND ABANDON <input checked="" type="checkbox"/>	REMEDIAL WORK <input type="checkbox"/>	ALTERING CASING <input type="checkbox"/>
TEMPORARILY ABANDON <input type="checkbox"/>	CHANGE PLANS <input type="checkbox"/>	COMMENCE DRILLING OPERATION <input type="checkbox"/>	PLUG AND ABANDONMENT <input type="checkbox"/>
PULL OR ALTER CASING <input type="checkbox"/>		CASING TEST AND CEMENT JOB <input type="checkbox"/>	
OTHER: <input type="checkbox"/>		OTHER: <input type="checkbox"/>	

12. Describe Proposed or Completed Operations (Clearly state all pertinent details, and give pertinent dates, including estimated date of starting any proposed work) SEE RULE 1103.

PROPOSED PLUGGING PROCEDURE

- 1) Inform the NMOCD 24 hours prior to commencement of plugging.
- 2) TIH with 5-1/2" packer. Find set point at 6000' and test casing.
- 3) GIH with 5-1/2" retainer with 350'+ fiberglass tailpipe. Set at 6000'.
- 4) Squeeze Tubb and Drinkard with 125 sx class "C" cement. Spot 50' cement on top. Circulate casing with 10 PPG salt gel mud to the surface.
- 5) Pump 25 sx across Queen and intermediate shoe from 3850'-3700'. If any Queen waterflows are encountered, set a CIBP at 3850' and squeeze 100 sx through a retainer @ 3500'.
- 6) Pump 25 sx from 2900'-2750' across base of salt section. WOC. Tag plug. Pump 25 sx from 1350'-1200' across top of salt section. WOC. Tag plug. Pump 50 sx from 350' to the surface.
- 7) Refill casing annulus from surface with 1" tubing if necessary.
- 8) Cut off wellhead and install marker. Clean location and restore surface.

I hereby certify that the information above is true and complete to the best of my knowledge and belief.

SIGNATURE Robert T. McNaughton TITLE Prod. Engineer DATE 4/2/94

TYPE OR PRINT NAME Robert T. McNaughton Telephone No. 397-0428

(This space for State Use)

APPROVED BY _____ TITLE ORIGINAL SIGNED BY JERRY SEXTON DATE APR 05 1994

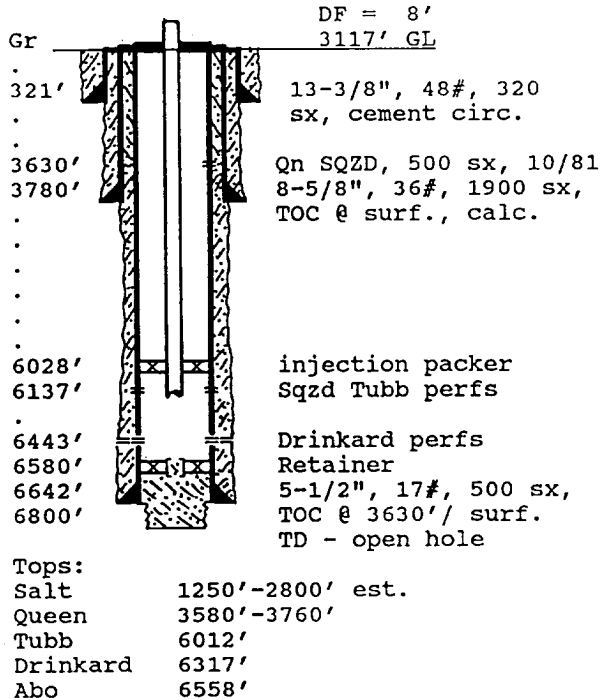
CONDITIONS OF APPROVAL, IF ANY:

INJECTION WELL DATA SHEET

PO-91m
(1/94)

OPERATOR: Texaco Exploration & Production Inc WELL: West Dollarhide Drinkard Unit #65
 FOOTAGE LOCATION: 2090 FSL,1650 FEL Sec./Twn/Rng: Unit J, Sec 31, T-24-S, R-38-E
 Former Texaco Inc.- J.B. McGhee #6 Lea County, New Mexico

SCHEMATIC



TABULAR DATA

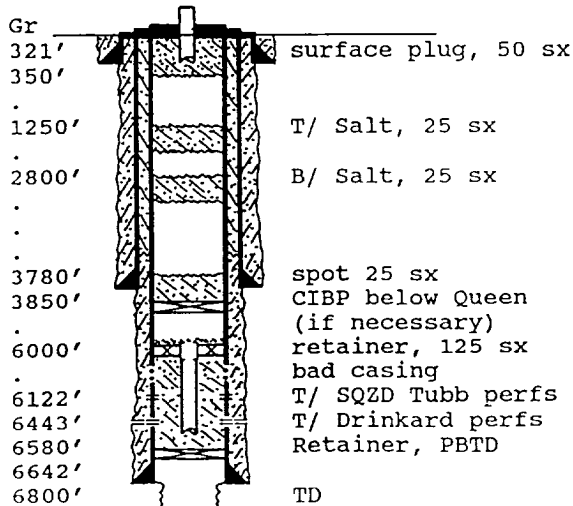
Surface Casing: Set at: 321'
 Size 13-3/8, 48# Cemented with 320 sx.
 TOC surface ' determined by circulated
 Hole Size 17-1/4" Comp. Date 5-04-53
Intermediate casing: Set at: 3780'
 Size 8-5/8", 36# Cemented with 1900 sx.
 TOC surface ' determined by calculated
 Hole Size 11", Annulus SQZD 500 sx, 10/81
Production Casing: Set at: 6642'
 Size 5-1/2, 17# Cemented with 500 sx.
 TOC 3630/surf. ' determined by CBL/ Sqz.
 Hole Size 7-7/8"
Injection Interval:
6443' to 6566' through: Perforations
SQZD Tubb prfs: 6122-6354', 1100 sx, 3/73

PROPOSED PLUG AND ABANDONMENT

PO-113
(4/94)

OPERATOR: Texaco Exploration & Production Inc WELL: West Dollarhide Drinkard Unit #65
 FOOTAGE LOCATION: 2090 FSL,1650 FEL Sec./Twn/Rng: Unit J, Sec 31, T-24-S, R-38-E
converted to water injection 11-29-69 Lea County, New Mexico

SCHEMATIC



TABULAR DATA

Surface Plug:
 Size 350'-surf. Cemented with 50 sx.
1350'-1200' 25 sx.
2900'-2750' 25 sx.
Intermediate Plugs:
 Size 3850'-3700' Cemented with 25 sx.
 use class "C" cement for all plugs, 1.32 ft³/sx
Producing Zone Plug:
 Size retainer Cemented with 125 sx.
 **Run 350' of fiberglass tail pipe below retainer