

DISTRICT I

P.O. Box 1980, Hobbs, NM 88240

DISTRICT II

P.O. Box Drawer DD, Artesia, NM 88210

DISTRICT III

1000 Rio Brazos Rd., Aztec, NM 87410

OIL CONSERVATION DIVISION

P.O. Box 2088

Santa Fe, New Mexico 87504-2088

U. API NO.

30 025 12292

5. Indicate Type of Lease

STATE ☐

FEE ☒

6. State Oil / Gas Lease No.

7. Lease Name or Unit Agreement Name

WEST DOLLARHIDE DRINKARD UNIT

8. Well No.

67

9. Pool Name or Wildcat

DOLLARHIDE TUBB DRINKARD

SUNDRY NOTICES AND REPORTS ON WELL
(DO NOT USE THIS FORM FOR PROPOSALS TO DRILL OR TO DEEPEN OR PLUG BACK TO A
DIFFERENT RESERVOIR. USE "APPLICATION FOR PERMIT"
(FORM C-101) FOR SUCH PROPOSALS.)

1. Type of Well: OIL WELL ☐ GAS WELL ☐ OTHER water injection well

2. Name of Operator
TEXACO EXPLORATION & PRODUCTION INC

3. Address of Operator
P.O. BOX 730, HOBBS, NM 88240

4. Well Location
Unit Letter P : 660 Feet From The SOUTH Line and 660 Feet From The EAST Line
Section 31 Township 24S Range 38E NMPM LEA COUNTY

10. Elevation (Show whether DF, RKB, RT, GR, etc.) 3116' GR

11. Check Appropriate Box to Indicate Nature of Notice, Report, or Other Data

NOTICE OF INTENTION TO:

PERFORM REMEDIAL WORK ☐

PLUG AND ABANDON ☒

TEMPORARILY ABANDON ☐

CHANGE PLANS ☐

PULL OR ALTER CASING ☐

OTHER: ☐

SUBSEQUENT REPORT OF:

REMEDIAL WORK ☐

ALTERING CASING ☐

COMMENCE DRILLING OPERATION ☐

PLUG AND ABANDONMENT ☐

CASING TEST AND CEMENT JOB ☐

OTHER: ☐

12. Describe Proposed or Completed Operations (Clearly state all pertinent details, and give pertinent dates, including estimated date of starting any proposed work) SEE RULE 1103.

- 1) Inform BLM and the NMOCD 24 hours prior to commencement of plugging.
- 2) TIH with work string. Drill out CIBPs at 5681', 5741' and 6050'. Clean hole to CIBP at 6560'. POH. Back flow well, record rate and pressure.
- 3) GIH with 5-1/2" retainer with 800' fiberglass tailpipe. Set at 5600'.
- 4) Squeeze Tubb and Drinkard with 200 sx class "C" cement. Spot 50' cement on top. Circulate casing with 10 PPG salt gel mud to the surface.
- 5) Pump 40 sx across Queen and intermediate shoe from 3800'-3500'. If any Queen waterflows are encountered, set a CIBP at 3800' and squeeze 100 sx through a retainer @ 3500'. Shoot squeeze holes @ 3250'. Pump 450 sx and circulate cement through annulus to the surface.
- 6) Pump 25 sx from 2600'-2450' across base of salt section. WOC. Tag plug.
Pump 25 sx from 1350'-1200' across top of salt section. WOC. Tag plug.
Pump 50 sx from 350' to the surface.
- 7) Refill casing annulus from surface with 1" tubing if necessary.
- 8) Cut off wellhead and install marker. Clean location and restore surface.

I hereby certify that the information above is true and complete to the best of my knowledge and belief.

SIGNATURE [Signature] TITLE Prod. Engineer

DATE 3/14/94

TYPE OR PRINT NAME Robert T. McNaughton

Telephone No. 397-0428

(This space for State Use)

ORIGINAL SIGNED BY JERRY SEXTON

APPROVED BY DISTRICT I SUPERVISOR TITLE DISTRICT I SUPERVISOR

DATE

MAR 22 1994

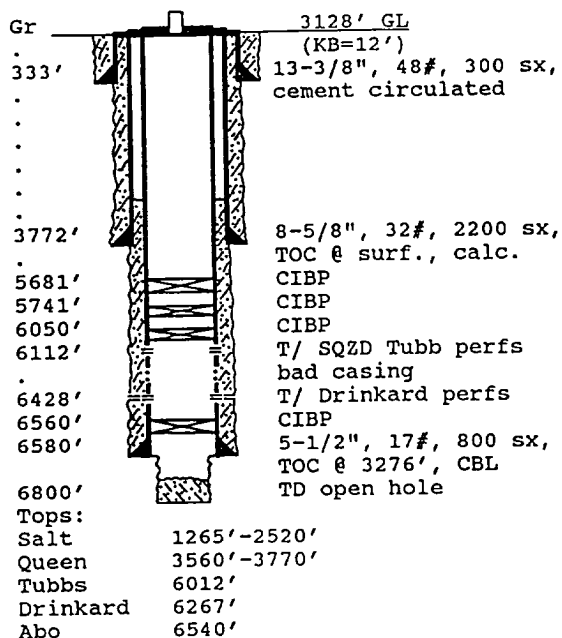
CONDITIONS OF APPROVAL, IF ANY:

INJECTION WELL DATA SHEET

PO-90m
(02/94)

OPERATOR: Texaco Exploration & Production Inc. WELL: West Dollarhide Drinkard Unit #67
 FOOTAGE LOCATION: 660 FSL, 660 FEL Sec./Twn/Rng: Unit P, Sec 31, T-24-S, R-38-E
Former Texaco Inc. - J. B. McGhee #7 Lea County, New Mexico

SCHEMATIC



TABULAR DATA

Surface Casing: Set at: 333'

Size 13-3/8", 48# Cemented with 300 sx.

TOC surface ' determined by circulated

Hole Size 17-1/4" Spud Date: 9-26-53

Intermediate casing: Set at: 3772'

Size 8-5/8", 32# Cemented with 2200 sx.

TOC surface determined by calculated.

Hole Size 11"

Production Casing: Set at: 6580'

Size 5-1/2", 17# Cemented with 800 sx.

TOC 3276' determined by CBL

Hole Size 7-7/8

Injection Interval: Lower Drinkard

6428' to 6592' through: perfs

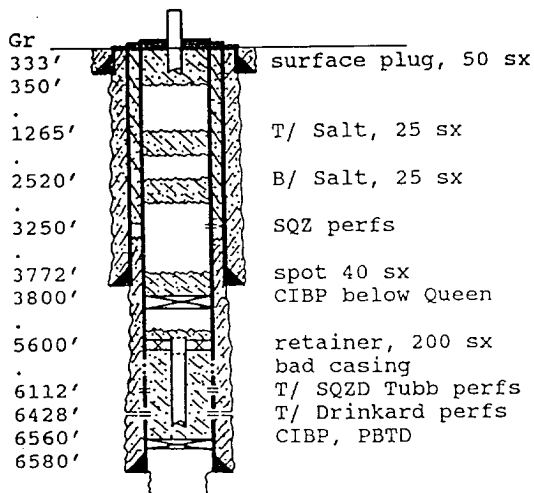
Tubing:

PROPOSED PLUG AND ABANDONMENT

PO-113
(2/94)

OPERATOR: Texaco Exploration & Production Inc. WELL: West Dollarhide Drinkard Unit #67
 FOOTAGE LOCATION: 660 FSL, 660 FEL Sec./Twn/Rng: Unit P, Sec 31, T-24-S, R-38-E
Lea County, New Mexico

SCHEMATIC



TABULAR DATA

Surface Plug:

Size 350'-surf. Cemented with 50 sx.

1350'-1200' 25 sx.

2600'-2450' 25 sx.

**circulate 450 sx through annulus from 3250'

Intermediate Plugs:

Size 3800'-3500' Cemented with 40 sx.

use class "C" cement for all plugs, 1.32 ft³/sx

Producing Zone Plug:

Size retainer Cemented with 75 sx.

**Run 800' of fiberglass tail pipe below retainer