

Submit 3 Copies
to Appropriate
District Office

State of New Mexico
Energy, Minerals and Natural Resources Department

Form C-103
Revised 1-1-89

OIL CONSERVATION DIVISION

DISTRICT I
P.O. Box 1980, Hobbs, NM 88240

DISTRICT II
P.O. Drawer DD, Artesia, NM 88210

DISTRICT III
1000 Rio Brazos Rd., Aztec, NM 87410

P.O. Box 2088
Santa Fe, New Mexico 87504-2088

| |
|---|
| WELL API NO. 30-025-12296 ✓ |
| 5. Indicate Type of Lease STATE <input checked="" type="checkbox"/> FEE <input type="checkbox"/> |
| 6. State Oil & Gas Lease No. B-9311 |
| 7. Lease Name or Unit Agreement Name MEXICO J |
| 8. Well No. 2 |
| 9. Pool name or Wildcat DOLLARHIDE TNSL YATES 7R Gas west |
| 10. Elevation (Show whether DF, RKB, RT, GR, etc.) 3170' GL |

| | |
|--|--|
| SUNDRY NOTICES AND REPORTS ON WELLS (DO NOT USE THIS FORM FOR PROPOSALS TO DRILL OR TO DEEPEN OR PLUG BACK TO A DIFFERENT RESERVOIR. USE "APPLICATION FOR PERMIT" (FORM C-101) FOR SUCH PROPOSALS.) | |
| 1. Type of Well: OIL WELL <input type="checkbox"/> GAS WELL <input checked="" type="checkbox"/> OTHER | |
| 2. Name of Operator Texaco Exploration and Production Inc. | |
| 3. Address of Operator P. O. Box 730 Hobbs, NM 88240 | |
| 4. Well Location Unit Letter O : 660 Feet From The SOUTH Line and 1980 Feet From The EAST Line Section 32 Township 24-S Range 38-E NMPM LEA | |
| 10. Elevation (Show whether DF, RKB, RT, GR, etc.) 3170' GL | |

| | |
|---|--|
| 11. Check Appropriate Box to Indicate Nature of Notice, Report, or Other Data | |
| NOTICE OF INTENTION TO: | SUBSEQUENT REPORT OF: |
| PERFORM REMEDIAL WORK <input type="checkbox"/> PLUG AND ABANDON <input checked="" type="checkbox"/> | REMEDIAL WORK <input type="checkbox"/> ALTERING CASING <input type="checkbox"/> |
| TEMPORARILY ABANDON <input type="checkbox"/> CHANGE PLANS <input type="checkbox"/> | COMMENCE DRILLING OPNS. <input type="checkbox"/> PLUG AND ABANDONMENT <input type="checkbox"/> |
| PULL OR ALTER CASING <input type="checkbox"/> | CASING TEST AND CEMENT JOB <input type="checkbox"/> |
| OTHER: <input type="checkbox"/> | OTHER: <input type="checkbox"/> |

12. Describe Proposed or Completed Operations (Clearly state all pertinent details, and give pertinent dates, including estimated date of starting any proposed work) SEE RULE 1103.

- 1) Inform NMOCDD 24 hours prior to commencement of plugging.
- 2) MIRU. Bleed casing pressure and rig up coiled tubing unit.
- 3) TIH with bit and clean out casing. Tag PBTD at 3042'. Fill casing and tubing with 15 PPG mud to surface.
- 4) When well is dead, release from packer. Circulate 15 PPG mud to surface through annulus. Allow pressures to equalize. Unseat and pull packer and 2-3/8" tubing out of hole. Spot cement plugs from 3042' to 2700'.
- 5) Set retainer at 2630'. Establish pump-in rate and squeeze Yates perms with 40 sx micro-fine cement at .25-.5 BPM followed by 110 sx class 'C' cement at 1-2 BPM. Sting out and spot 25 sx on top of retainer to cover base of salt at 2490'.
- 6) Pump 35 sx from 1400'-1100' across top of salt. WOC. Tag plug. Pump 40 sx from 350' to the surface.
- 7) Cut off wellhead and install marker. Clean location and restore surface.

I hereby certify that the information above is true and complete to the best of my knowledge and belief.

SIGNATURE Robert McNaughton TITLE Production Engineer DATE 3-05-93
TYPE OR PRINT NAME Robert McNaughton TELEPHONE NO. 397-0428

(This space for State Use)

ORIGINAL SIGNED BY JERRY SEXTON
DISTRICT SUPERVISOR

APPROVED BY _____ TITLE _____ DATE _____

CONDITIONS OF APPROVAL, IF ANY:

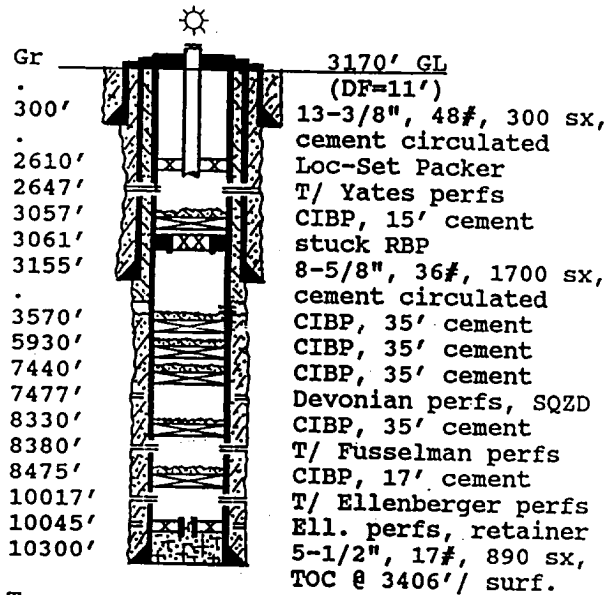
MAR 09 1993

PRODUCING WELL DATA SHEET

PO-90M
(3/92)

OPERATOR: Texaco Exploration & Production Inc. WELL: Mexico "J" #2
FOOTAGE LOCATION: 660 FSL, 1980 FEL Sec./Twn/Rng: Unit O, Sec 32, T-24-S, R-38-E
Lea County, New Mexico

SCHEMATIC



Tops:
Salt 1290'-2490'
Yates 2646'
Queen 3580'
Drinkard 6305'
Devonian 7477'

TABULAR DATA

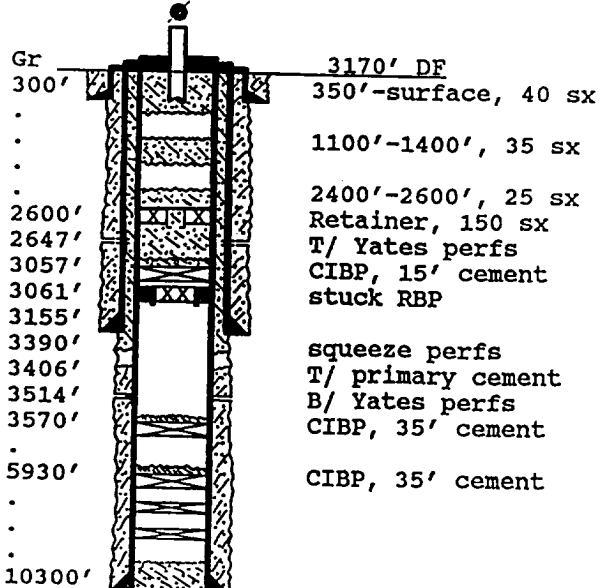
Surface Casing: Set at: 300'
Size 13-3/8", 48# Cemented with 300 sx.
TOC surface ' determined by circulation
Hole Size 17" Spud Date: 12-21-51
Intermediate casing: Set at: 3155'
Size 8-5/8", 36# Cemented with 1700 sx.
TOC surface ' determined by circulation
Hole Size 11"
Production Casing: Set at: 6955'
Size 5-1/2", 17# Cemented w/ 287+603 sx.
TOC 3406/ surf. ' determined by CBL / SQZ
Hole Size 7-7/8, DV tool set at 8461'.
Producing Interval: W. Dollarhide Yates 7R
2647' to 3514' through: 139 holes @ 1 SPF
Tubing: 2-7/8", 4.7#, J-55

Recommended Plug and Abandon Procedure

PO-113
(3/92)

OPERATOR: Texaco Exploration & Production Inc WELL: Mexico J #2
FOOTAGE LOCATION: 660 FSL, 1980 FEL Sec./Twn/Rng: Unit O, Sec 32, T-24-S, R-38-E
Lea County, New Mexico

SCHEMATIC



TABULAR DATA

Surface Plugs:
Size 350'-surface Cemented with 40 sx.
1400'-1100' 35 sx.
Class 'C' Cement, 1.32 ft³ / sx
Intermediate Plugs:
Size 2600'-2400' Cemented with 25 sx.
3042'-2600' squeeze perfs w/ 150 sx
Class 'C' Cement, 1.32 ft³ / sx
Producing Zone Plugs:
Size _____ Cemented with _____ sx.