

NEW MEXICO OIL CONSERVATION COMMISSION
Santa Fe, New Mexico

REQUEST FOR (OIL) - (GAS) ALLOWABLE

New Well
Recompletion

This form shall be submitted by the operator before an initial allowable will be assigned to any completed Oil or Gas well. Form C-104 is to be submitted in QUADRUPLICATE to the same District Office to which Form C-101 was sent. The allowable will be assigned effective 7:00 A.M. on date of completion or recompletion, provided this form is filed during calendar month of completion or recompletion. The completion date shall be that date in the case of an oil well when oil is delivered into the stock tanks. Gas must be reported on 15.025 psia at 60° Fahrenheit.

Hobbs, New Mexico October 21, 1952
(Place) (Date)

WE ARE HEREBY REQUESTING AN ALLOWABLE FOR A WELL KNOWN AS:

Gulf Oil Corporation, Well No. 16, in SE $\frac{1}{4}$ SW $\frac{1}{4}$,
(Company or Operator) (Lease)
N, Sec. 33, T. 24-S, R. 38-E, NMPM., West Dolarhide Devonian Pool
(Unit)
Lea County. Date Spudded 8-17-52, Date Completed 10-20-52

Please indicate location:

Elevation 3171' Total Depth 7965' P.B.Top oil/gas pay 7740' Top of Prod. Form 7740'Casing Perforations: NONE orDepth to Casing shoe of Prod. String 7750'Natural Prod. Test Swabbed 41 bbls oil BOPDbased on - bbls. Oil in 20 Hrs. - Mins.Test after acid or shot Flow - 132 BOPDBased on 33 bbls. Oil in 6 Hrs. 0 Mins.

Gas Well Potential

Size choke in inches 3/4"Date first oil run to tanks or gas to Transmission system: October 20, 1952Transporter taking Oil or Gas: Texas - New Mexico Pipe Line Co.

Casing and Cementing Record

Size	Feet	Sax
<u>13-3/8"</u>	<u>291</u>	<u>330</u>
<u>9-5/8"</u>	<u>2880</u>	<u>1100</u>
<u>7"</u>	<u>7724</u>	<u>275</u>

Remarks: Request that this well be placed in the Proration Schedule effective
October 20, 1952. This drilling unit contains 47.9 acres.

I hereby certify that the information given above is true and complete to the best of my knowledge.

Approved 10 - 22, 1952 Gulf Oil Corporation
(Company or Operator)

OIL CONSERVATION COMMISSION

By: Ray J. Anderson

Title

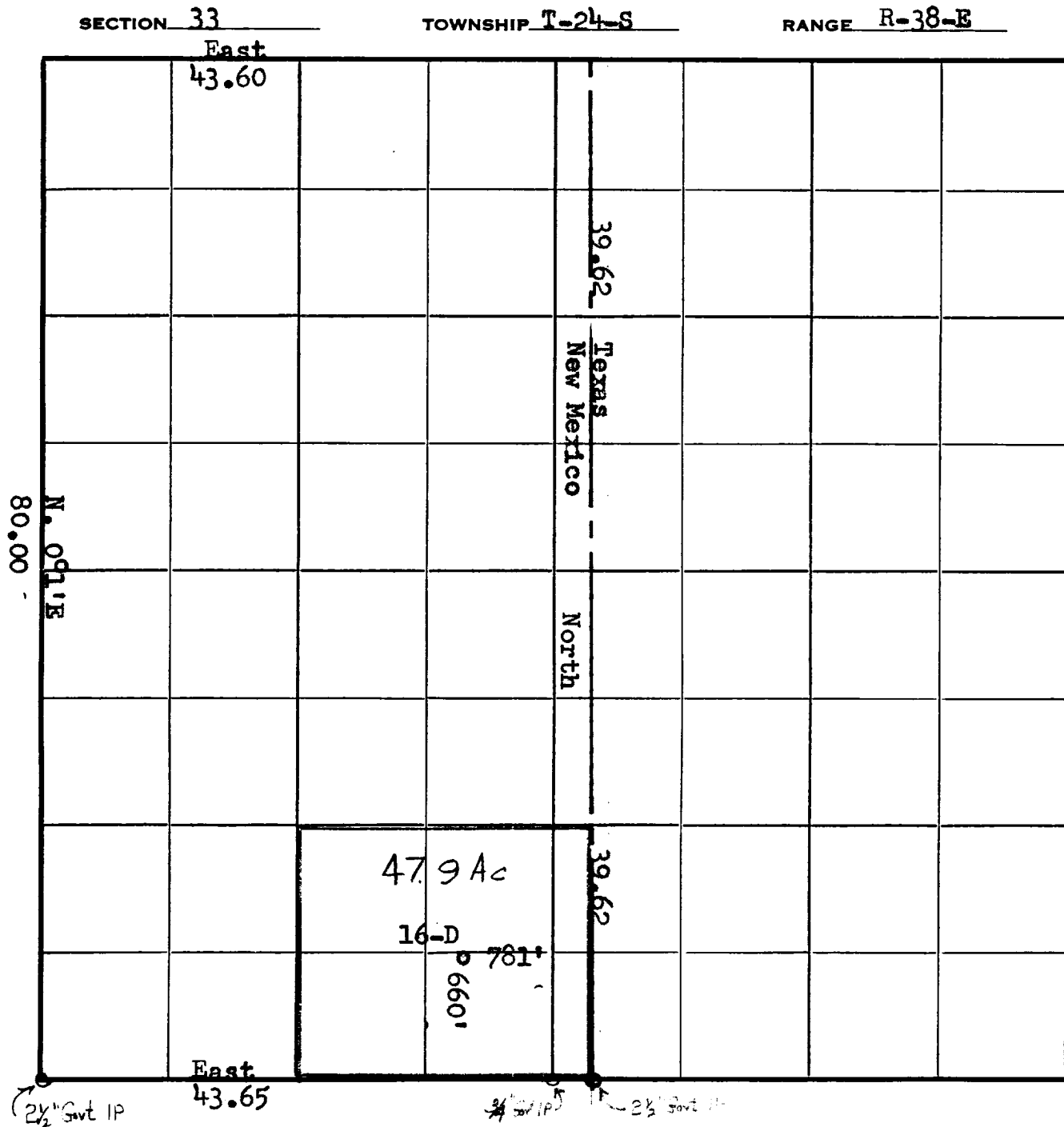
By: Edna Taylor
(Signature)Title Area Prod. Supt.
Send Communications regarding well to:Name Gulf Oil CorporationAddress Box 2167, Hobbs, New Mexico

SECTION PLAT

GULF FW 636

SCALE 1 IN. = 800 FT.

This Plat exhibits the exact location of Gulf Oil Corporation's No. 16-D
Harry Leonard "A" in Sec. 33 Twnsp T-24-S Range R-38-E



This is to certify that I am a Registered Land Surveyor, that the above plat was prepared under my direction and that the same is true and correct to the best of my knowledge and belief.

J. A. Teague
 J. A. Teague

