

NEW MEXICO OIL CONSERVATION COMMISSION  
Santa Fe, New Mexico

REQUEST FOR (OIL) - (GAS) ALLOWABLE

New Well  
Recompletion

This form shall be submitted by the operator before an initial allowable will be assigned to any completed Oil or Gas well. Form C-104 is to be submitted in QUADRUPLICATE to the same District Office to which Form C-101 was sent. The allowable will be assigned effective 7:00 A.M. on date of completion or recompletion, provided this form is filed during calendar month of completion or recompletion. The completion date shall be that date in the case of an oil well when oil is delivered into the stock tanks. Gas must be reported on 15.025 psia at 60° Fahrenheit.

Hobbs, New Mexico June 3, 1953  
(Place) (Date)

WE ARE HEREBY REQUESTING AN ALLOWABLE FOR A WELL KNOWN AS:

Gulf Oil Corporation Harry Leonard "A" Well No. 26, in SE 1/4 NW 1/4,  
(Company or Operator) (Lease)  
T. 24-S, R. 38-E, NMPM, Dollarhide West Drinkard Pool  
(Unit)  
Lea County. Date Spudded April 17, 1953, Date Completed May 29, 1953

Please indicate location:


Elevation 3186' Total Depth 6900', P.B.

Top oil/gas pay 6545' Prod. Form. Lime

Casing Perforations: None or

Depth to Casing shoe of Prod. String 6279'

Natural Prod. Test 222 BOPD

based on 74 bbls. Oil in 8 Hrs. Mins.

Test after acid or shot BOPD

Based on bbls. Oil in Hrs. Mins.

Gas Well Potential

Size choke in inches 3/4"

Date first oil run to tanks or gas to Transmission system: June 1, 1953

Transporter taking Oil or Gas: Texas-New Mexico Pipeline Co.

Casing and Cementing Record

Size Feet Sax

10-3/4"	300'	300
7"	6500'	2100

Remarks: It is proposed that this well be placed in the Proration Schedule effective June 1, 1953. This unit contains 47.24 Acres.

I hereby certify that the information given above is true and complete to the best of my knowledge.

Approved June 3, 1953 Gulf Oil Corporation  
(Company or Operator)

OIL CONSERVATION COMMISSION

By: Roy J. [Signature] Title Asst. Area Prod. Supt.

Title [Signature] Name Gulf Oil Corporation

Address Box 2167, Hobbs, New Mexico

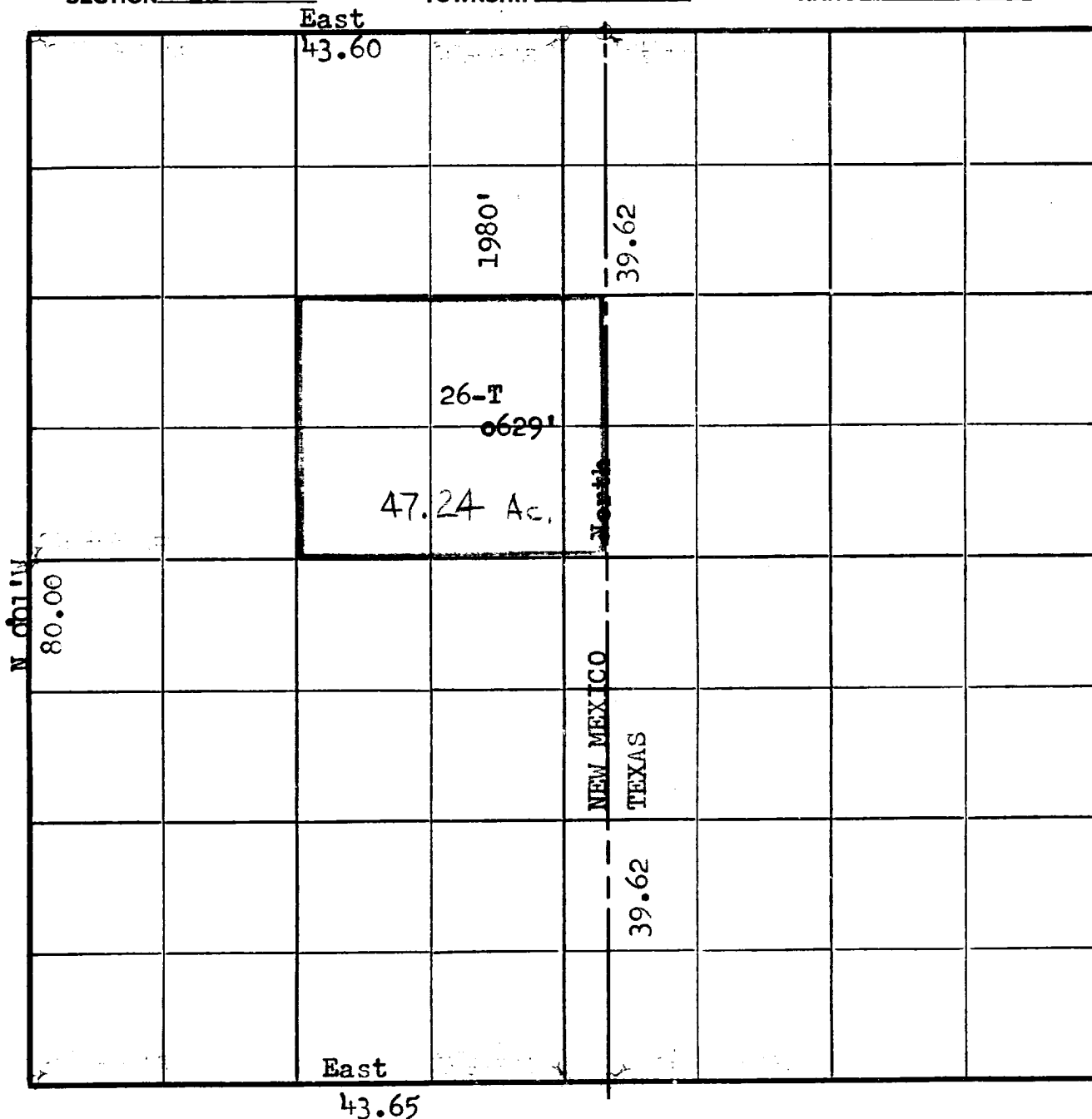
GULF FW 636

**SCALE 1 IN. = 800 FT.**

**SECTION** 33

**TOWNSHIP** -24-S

**RANGE-38-E**



This is to certify that I am a Registered Land Surveyor, that the above plat was prepared under my direction and that the same is true and correct to the best of my knowledge and belief.

J. A. Teague