

3-MNOCC

SOUTHEAST NEW MEXICO PACKER LEAKAGE TEST

Operator GETTY OIL COMPANY			Lease A. B. COATES "C"			Well No. 25	
Location of Well	Unit A	Sec 24	Twp 25-S	Rge 37-E	County Lea		
Name of Reservoir or Pool		Type of Prod (Oil or Gas)	Method of Prod Flow, Art Lift	Prod. Medium (Tbg or Csg)	Choke Size		
Upper Compl	JUSTIS BLINERY		OIL	PUMP	CSG.	--	
Lower Compl	JUSTIS TURB-DRINKARD		OIL	PUMP	CSG.	--	

FLOW TEST NO. 1

Both zones shut-in at (hour, date): **8:00 A.M., 2-1-71**

Well opened at (hour, date): 8:00 A.M., 2-2-71	Upper Completion	Lower Completion
Indicate by (X) the zone producing.....		XX
Pressure at beginning of test.....	50	155
Stabilized? (Yes or No).....	YES	YES
Maximum pressure during test.....	50	155
Minimum pressure during test.....	50	25
Pressure at conclusion of test.....	50	25
Pressure change during test (Maximum minus Minimum).....	0	130
Was pressure change an increase or a decrease?.....	NO CHANGE	DECREASE

Well closed at (hour, date): **8:00 A.M., 2-3-71** Total Time On Production **24 Hours**

Oil Production _____ Gas Production _____

During Test: **20** bbls; Grav. **37.4** ; During Test **1** **51** MCF; GOR **2,550**

Remarks _____

FLOW TEST NO. 2

Well opened at (hour, date): 8:00 A.M., 2-4-71	Upper Completion	Lower Completion
Indicate by (X) the zone producing.....	XXX	
Pressure at beginning of test.....	75	200
Stabilized? (Yes or No).....	YES	YES
Maximum pressure during test.....	75	200
Minimum pressure during test.....	50	110
Pressure at conclusion of test.....	50	110
Pressure change during test (Maximum minus Minimum).....	25	90
Was pressure change an increase or a decrease?.....	DECREASE	DECREASE

Well closed at (hour, date): **8:00 A.M., 2-5-71** Total time on Production **24 Hours**

Oil Production _____ Gas Production _____

During Test: **5** bbls; Grav. **32.8** ; During Test **59** MCF; GOR **11,800**

Remarks _____

I hereby certify that the information herein contained is true and complete to the best of my knowledge.

Approved **MAR 1 1971** 19 _____ Operator **GETTY OIL COMPANY**
New Mexico Oil Conservation Commission _____ Original Signed By
By _____ **C. L. Wade**
Title **AREA SUPERINTENDENT**
Date **FEBRUARY 19, 1971**

Signature: *[Signature]*
Title **SUPERVISOR DISTRICT**

SOUTHEAST NEW MEXICO PACKER LEAKAGE INSTRUCTIONS

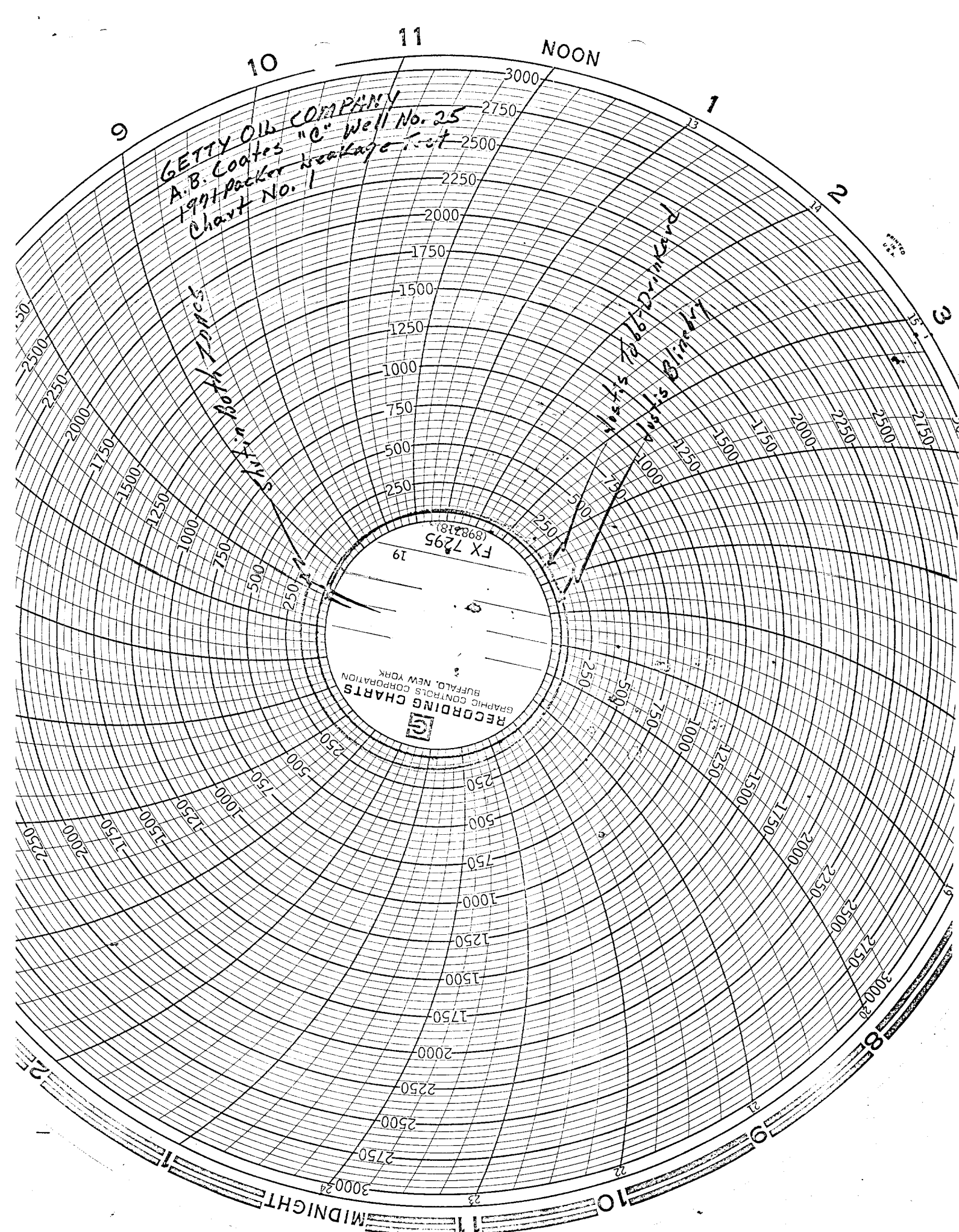
1. A packer leakage test shall be commenced on each multiply completed well within seven days after actual completion of the well, and annually thereafter as prescribed by the order authorizing the multiple completion. Such tests shall also be commenced on all multiple completions within seven days following recompletion and/or chemical or fracture treatment, and whenever remedial work has been done on a well during which the packer or the tubing have been disturbed. Tests shall also be taken at any time that communication is suspected or when requested by the Commission.
2. At least 72 hours prior to the commencement of any packer leakage test, the operator shall notify the Commission in writing of the exact time the test is to be commenced. Offset operators shall also be so notified.
3. The packer leakage test shall commence when both zones of the dual completion are shut-in for pressure stabilization. Both zones shall remain shut-in until the well-head pressure in each has stabilized and for a minimum of two hours thereafter, provided however, that they need not remain shut-in more than 24 hours.
4. For Flow Test No. 1, one zone of the dual completion shall be produced at the normal rate of production while the other zone remains shut-in. Such test shall be continued until the flowing wellhead pressure has become stabilized and for a minimum of two hours thereafter, provided however, that the flow test need not continue for more than 24 hours.

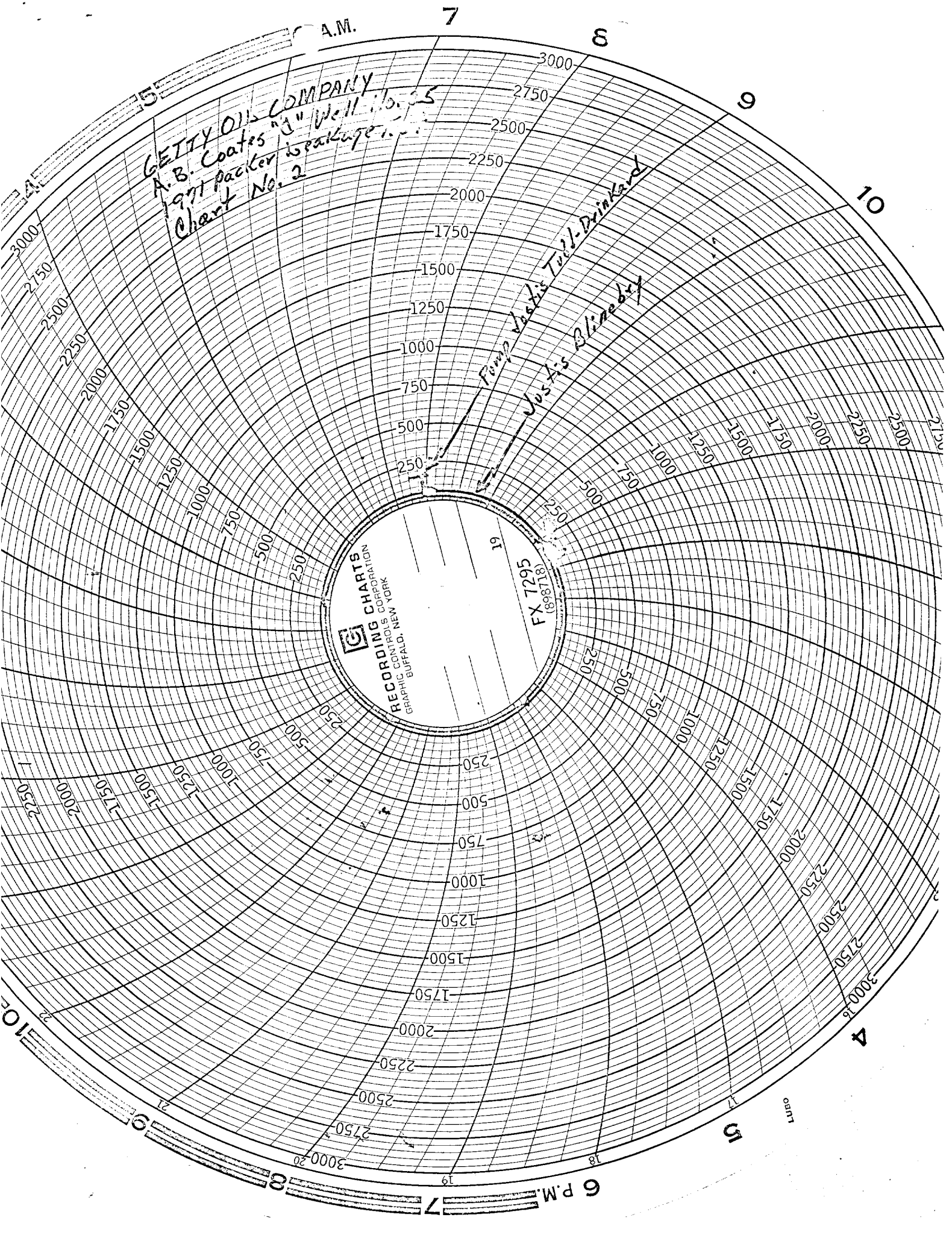
5. Following completion of Flow Test No. 1, the well shall again be shut-in, in accordance with paragraph 3 above.
6. Flow Test No. 2 shall be conducted even though no leak was indicated during Flow Test No. 1. Procedure for Flow Test No. 2 is to be the same as for Flow Test No. 1 except that the previously produced zone shall remain shut-in while the previously shut-in zone is produced.
7. All pressures, throughout the entire test, shall be continuously measured and recorded with recording pressure gauges, the accuracy of which must be checked with a deadweight tester at least twice, once at the beginning and once at the end, of each flow test.
8. The results of the above-described tests shall be filed in triplicate within 15 days after completion of the test. Tests shall be filed with the appropriate District Office of the New Mexico Oil Conservation Commission on Southeast New Mexico Packer Leakage Test Form Revised 11-58, together with the original pressure recording gauge charts with all the deadweight pressures which were taken indicated thereon. In lieu of filing the aforesaid charts, the operator may construct a pressure versus time curve for each zone of each test, indicating thereon all pressure changes which may be reflected by the gauge charts as well as all deadweight pressure readings which were taken. If the pressure curve is submitted, the original chart must be permanently filed in the operator's office. Form C-116 shall also accompany the Packer Leakage Test Form when the test period coincides with a gas-oil ratio test period.

RECEIVED

FEB 23 1971

OIL CONSERVATION COMM.
HOBBES, N.M.





GETTY OIL COMPANY
A.B. Coates 3" Well No. 35
1971 packer is package 1
Chart No. 2

Pump Jacks Tull-Drinkard
Justis Blinney

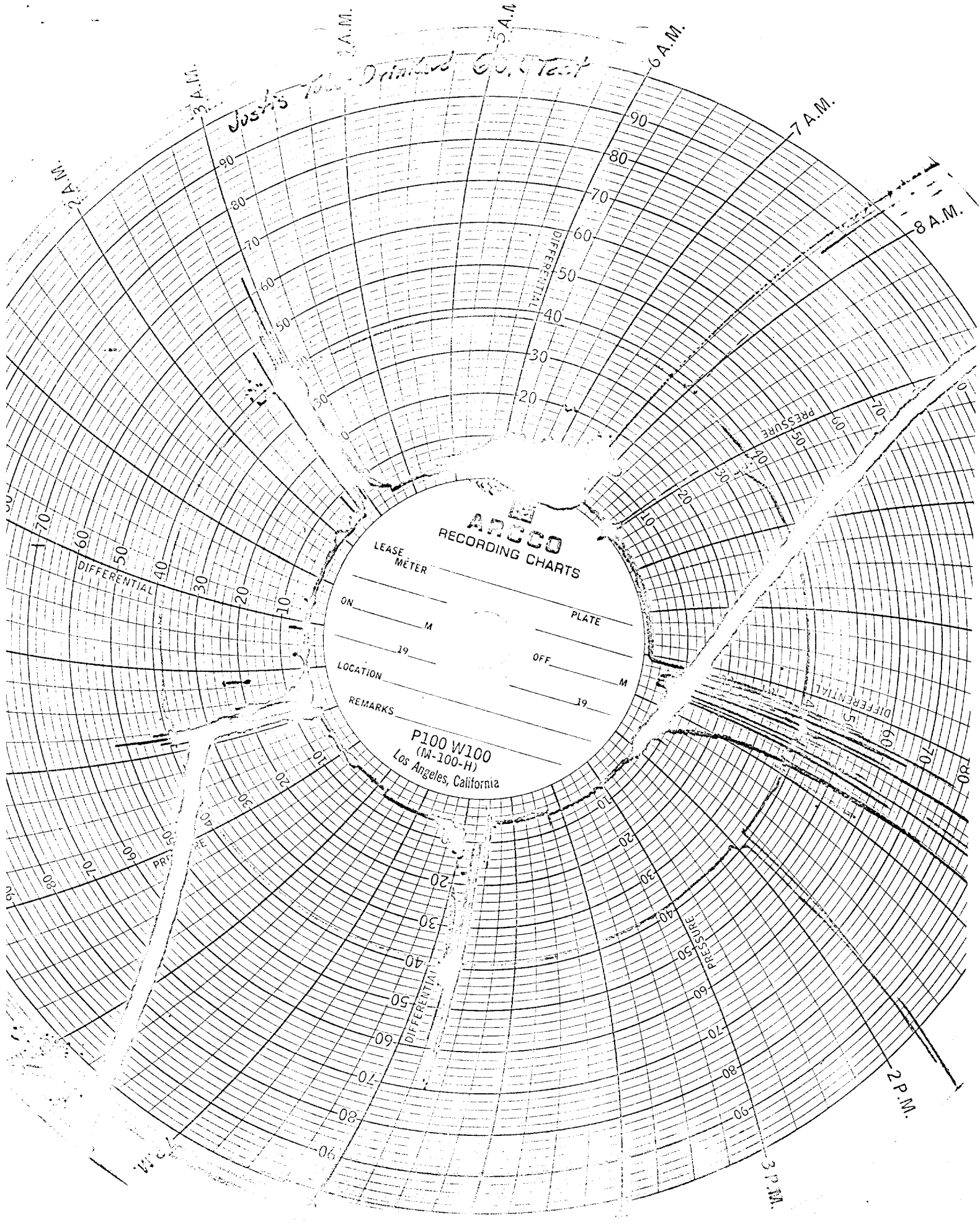
RECORDING CHARTS
GRAPHIC CONTROLS CORPORATION
BUFFALO, NEW YORK

FX 7295
(898718)

A.M.

6 P.M.

chart



Josh's Pl. - Drilled G.O. Test

ARCCO
RECORDING CHARTS

LEASE
METER

ON _____ M _____

PLATE _____

LOCATION _____

OFF _____

REMARKS _____

P100 W100
(14-100-H)
Los Angeles, California

16 A.M.

7

GATTY OIL COMPANY
A.B. GATTY & SONS
1001 Parker Building
Chart No. 3

RECORDING CHARTS
GRAPHIC CONTROLS CORPORATION
BUFFALO, NEW YORK

19

FX 7295
(898718)

CHART

6 A.M.

GETTY OIL COMPANY
A.B. Coates "C" Well-1025
1971 packer leakage test
Chart No. 4


RECORDING CHARTS
GRAPHIC CONTROLS CORPORATION
BUFFALO, NEW YORK

FX 7295
(898718)

61

Pump Jostis Blinberg

Jostis Tobb-Drinkard

LUBO

5

6 P.M.

ARCCO RECORDING CHARTS

LEASE METER

ON

OFF

M

PLATE

P100 W100 (M 100-H)

Los Angeles California

REMARKS

7 A.M.

8 A.M.

9 A.M.

10 A.M.

11 A.M.

12 NOON

1 P.M.

2 A.M.

3 A.M.

4 A.M.

5 A.M.

6 A.M.

7 A.M.

8 A.M.

9 A.M.

10 A.M.

11 A.M.

12 NOON

1 P.M.

2 P.M.

3 P.M.

4 P.M.

5 P.M.

6 P.M.

7 P.M.

8 P.M.

9 P.M.

10 P.M.

11 P.M.

12 MIDNIGHT

PRESSURE

DIFFERENTIAL