

UNITED STATES
DEPARTMENT OF THE INTERIOR
BUREAU OF LAND MANAGEMENT

FORM APPROVED
Budget Bureau No. 1004-0135
Expires: September 30, 1990

SUNDRY NOTICES AND REPORTS ON WELLS

Do not use this form for proposals to drill or to deepen or reentry to a different reservoir.
Use "APPLICATION FOR PERMIT—" for such proposals

SUBMIT IN TRIPLICATE

1. Type of Well

☒ Oil Well ☐ Gas Well ☐ Other

2. Name of Operator

Texaco Exploration & Production Inc.

3. Address and Telephone No.

P.O. Box 730, Hobbs, NM 88241-0730 (505) 393-7191

4. Location of Well (Footage, Sec., T., R., M., or Survey Description)

Unit Letter L, 1980 FSL, 990 FWL,
Sec. 35, T-24-S, R-37-E

5. Lease Designation and Serial No.

#LC-032874A

6. If Indian, Allottee or Tribe Name

7. If Unit or CA, Agreement Designation

8. Well Name and No.

G.L. Erwin A Fed #4

9. API Well No.

30-025-20199

10. Field and Pool, or Exploratory Area

Justicia Blinbry & Justicia
Langric Mattix Tabb/Port

11. County or Parish, State

Lea County, NM

12. CHECK APPROPRIATE BOX(S) TO INDICATE NATURE OF NOTICE, REPORT, OR OTHER DATA

TYPE OF SUBMISSION

- ☒ Notice of Intent
☐ Subsequent Report
☐ Final Abandonment Notice

TYPE OF ACTION

- ☒ Abandonment
☐ Recompletion
☐ Plugging Back
☐ Casing Repair
☐ Altering Casing
☐ Other
☐ Change of Plans
☐ New Construction
☐ Non-Routine Fracturing
☐ Water Shut-Off
☐ Conversion to Injection

(Note: Report results of multiple completion on Well Completion or
Recompletion Report and Log form.)

13. Describe Proposed or Completed Operations (Clearly state all pertinent details, and give pertinent dates, including estimated date of starting any proposed work. If well is directionally drilled, give subsurface locations and measured and true vertical depths for all markers and zones pertinent to this work.)*

- 1) Inform BLM 24 hours prior to commencement of plugging.
- 2) MIRU. Install BOP on Blinbry string. By wireline, GIH with gauge ring. Clean hole to TD. Move BOP and repeat for Drinkard string. If unable to reach TD, confer with engineer or foreman before running slim hole tubing and bit.
Drinkard (Y), South String:
- 3) By wireline, set CIBP at 5880'. By wireline bailer, spot 1 sk (40') class "C" cement on top. POH.
- 4) GIH and load string with 26 Bbls salt gel mud; 10# brine and 25# gel/ Bbl. Fill string to TOC at 1315'. Adjust mud volumes as needed, since the 2 7/8" casing strings will be cut off.
- 5) Set second CIBP at 3550'. Spot 2 sx cement (80'+) on top of CIBP. Move BOP to Blinbry string.
Blinbry (X), North String:
- 6) By wireline, set CIBP at 5350'. By wireline bailer, spot 1 sk (40') class "C" cement on top. POH.
- 7) GIH and load string with 23 Bbls salt gel mud; 10# brine and 25# gel/ Bbl. Fill string to TOC at 1315'.
- 8) Set CIBP at 3550'. Spot 2 sx cement (80'+) on top of CIBP. POH.
- 9) By wireline, jet cut both strings at approximately 1300'. TOC @ 1315'.
- 10) Circulate mud and fill casing to surface. Pump 100 sx cement from 1315'-1000' on top of casing stubs. Circulate mud and confirm absence of annular flow.
- 11) Tag intermediate plug with WS. Pump 75 sx cement from ^{314'}264' to surface in 8 5/8" casing.
- 12) Cut off wellhead and install dry hole marker. Clean location.
- 13) Restore surface as per Federal requirements.

14. I hereby certify that the foregoing is true and correct

Signed [Signature] Title Production Engineer

Date 11-5-91

(This space for Federal or State office use)

Approved by [Signature]
Conditions of approval, if any:

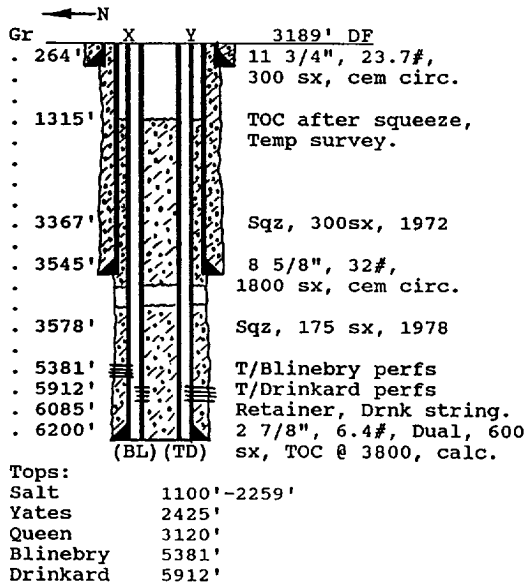
Title _____ Date 11-19-91

WELL DATA SHEET

PO-113
(5/91)

OPERATOR: Texaco E&P Inc. Lease: G.L. Erwin A Fed #4
 FOOTAGE LOCATION: 990 FWLx1980 FSL Sec./Twn/Rng: Unit L, Sec 35, T-24-S, R-37-E
Dual Blinebry/Drinkard, down hole commingled on 9-15-78 Lea County, New Mexico

SCHEMATIC



TABULAR DATA

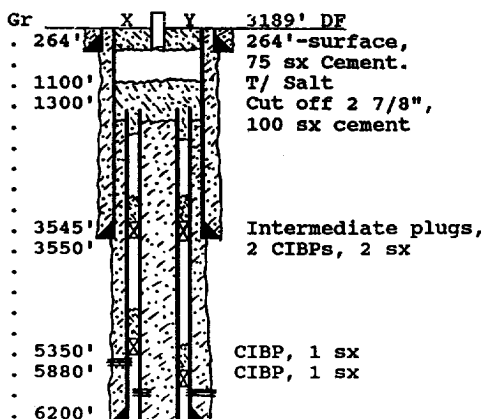
Surface Casing: Set at 264'
 Size 11 3/4", 23.7# Cemented with 300 sx.
 TOC surface ' determined by circulation
 Hole Size 15" Comp. Date 4-18-63
 Intermediate casing: Set at 3545'
 Size 8 5/8", 32# Cemented with 1800 sx.
 TOC surface ' determined by circulation
 Hole Size 11"
 Production Casing: Set at 6200'
 Size 2 7/8", 6.4# *2 Cemented with 425 sx.
 TOC 3800 ' determined by calculation
 Hole Size 8 3/4"
 Open Hole Interval: None
 Leak 3367'-3649' squeezed 300 sx, 2-10-72.
 Leak 3547'-3578' squeezed 175 sx, 9-15-78.

PLUG AND ABANDON DATA

PO-113
(5/91)

OPERATOR: Texaco E&P Inc. LEASE: G.L. Erwin A Fed #4
 FOOTAGE LOCATION: 990 FWLx1980 FSL Sec./Twn/Rng: Unit L, Sec 35, T-24-S, R-37-E
Shut-in due to 100% water production from about 3500'. Lea County, New Mexico

SCHEMATIC



PLUGGING DATA

Surface Plug:
 Size 264'-Surf. Cemented with 75 sx.
1315'-1040' Cemented with 100 sx.
 Class 'C' Cement, 1.32 cu ft/ sx
 Intermediate Plug(s):
 Size 3600'-3520' Cemented with 2 sx.
 Class 'C' Cement, 1.32 cu ft/ sx
 Producing Zone Plugs:
 Size CIBP, 40' Cemented with 1 sx.
 Casing stub plug covers top of salt section.

NOTE: NORTH String, X, is Blinebry.
 SOUTH String, Y, is Drinkard.