

NEW MEXICO OIL CONSERVATION COMMISSION  
Santa Fe, New Mexico

Form G-101  
Revised (12/1/55)

MOBBS OFFICE O. C. C.

NOTICE OF INTENTION TO DRILL

Notice must be given to the District Office of the Oil Conservation Commission and approval obtained before drilling or completion begins. If changes in the proposed plan are considered advisable, a copy of this notice showing such changes will be returned to the sender. Submit this notice in QUINTUPPLICATE. One copy will be returned following approval. See additional instructions in Rules and Regulations of the Commission. If State Land submit 6 Copies Attach Form G-128 in triplicate to first 3 copies of form G-101

Midland, Texas

(Place)

May 21, 1964

(Date)

OIL CONSERVATION COMMISSION  
SANTA FE, NEW MEXICO

Gentlemen:

You are hereby notified that it is our intention to commence the Drilling of a well to be known as

**Tenneco Oil Company**

(Company or Operator)

State - E. L. Bradley

(Lease)

Well No. 3, in F The well is

(Unit)

located 2310 feet from the North line and 2310 feet from the

West

line of Section 16, T. 25-S, R. 32-E, NMPM.

(GIVE LOCATION FROM SECTION LINE) Undesignated Pool, Lea County

If State Land the Oil and Gas Lease is No. E-5009

If patented land the owner is

Address

We propose to drill well with drilling equipment as follows: Rotary Tools

The status of plugging bond is in effect

Drilling Contractor Contract not let yet.

We intend to complete this well in the Delaware Sand formation at an approximate depth of 4700 feet.

CASING PROGRAM

We propose to use the following strings of Casing and to cement them as indicated:

Size of Hole	Size of Casing	Weight per Foot	New or Second Hand	Depth	Backs Cement
12 1/4	8 5/8	24#	New	350	Suff. to circulate
7 7/8	4 1/2	9.5#	New	4700	150

If changes in the above plans become advisable we will notify you immediately.

ADDITIONAL INFORMATION (If recompletion give full details of proposed plan of work.)

Approved, 19

Except as follows:

Sincerely yours,

Tenneco Oil Company  
(Company or Operator)  
By R. O. Bowers

Position District Office Supervisor  
Send Communications regarding well to

Name Tenneco Oil Company

Address Box 1031, Midland, Texas

OIL CONSERVATION COMMISSION

By

NEW MEXICO OIL CONSERVATION COMMISSION HOBBS OFFICE FORM C-128  
WELL LOCATION AND ACREAGE DEDICATION PLAT 01/1/57

SEE INSTRUCTIONS FOR COMPLETING THIS FORM ON THE REVERSE SIDE MAY 22 10 44 AM '64

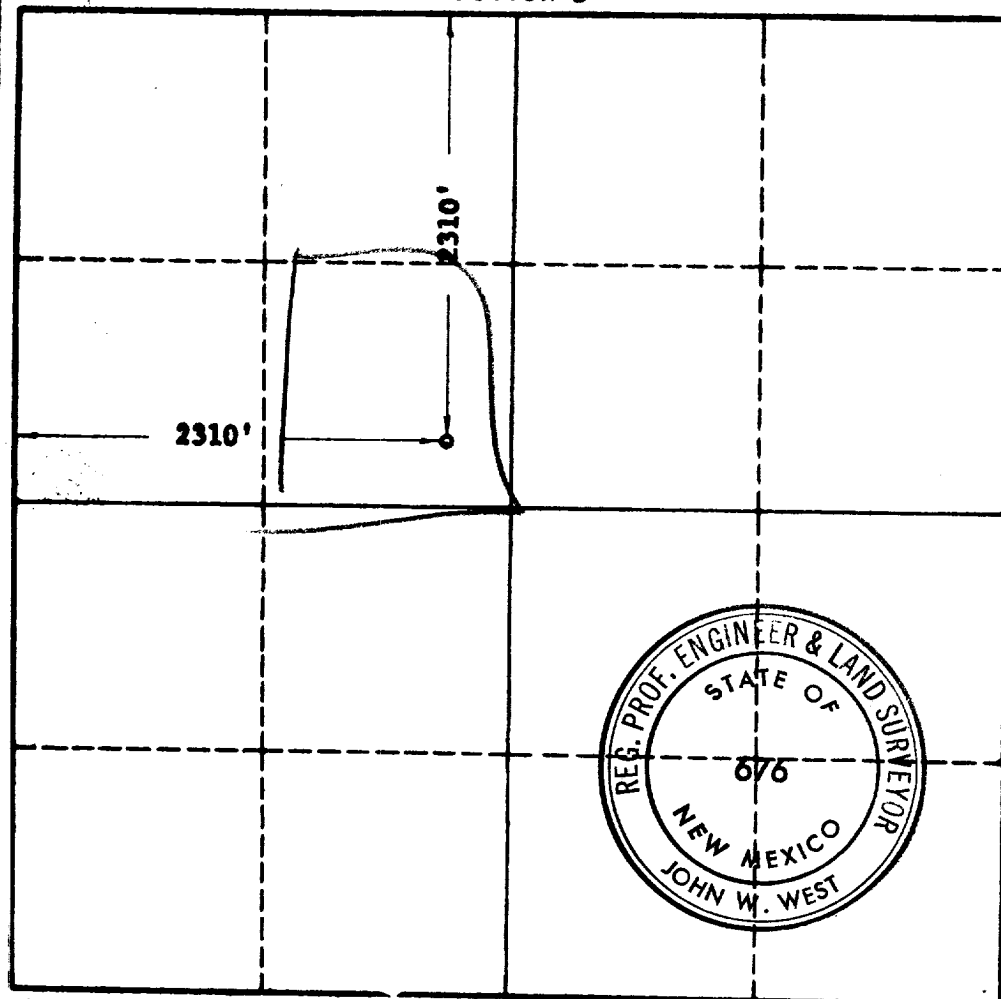
SECTION A

Operator <b>TENNECO OIL COMPANY</b>			Lease <b>ST. E.L. BRADLEY E-5009</b>		Well No. <b>3</b>
Unit Letter <b>F</b>	Section <b>16</b>	Township <b>25 SOUTH</b>	Range <b>32 EAST</b>	County <b>LEA</b>	
Actual Footage Location of Well: <b>2310</b> feet from the <b>NORTH</b> line and <b>2310</b> feet from the <b>WEST</b> line					
Ground Level Elev. <b>3420 (Est.)</b>	Producing Formation <b>Delaware Sand</b>		Pool <b>Undesignated</b>	Dedicated Acreage: <b>40</b> Acres	

1. Is the Operator the only owner in the dedicated acreage outlined on the plat below? YES ☒ NO ☐ ("Owner" means the person who has the right to drill into and to produce from any pool and to appropriate the production either for himself or for himself and another. (65-3-29 (e) NMSA 1935 Comp.)
2. If the answer to question one is "no," have the interests of all the owners been consolidated by communitization agreement or otherwise? YES ☐ NO ☐ If answer is "yes," Type of Consolidation \_\_\_\_\_
3. If the answer to question two is "no," list all the owners and their respective interests below:

Owner	Land Description

SECTION B



CERTIFICATION

I hereby certify that the information in SECTION A above is true and complete to the best of my knowledge and belief.

Name	<b>R. D. Bowers</b>
Position	<b>District Office Supervisor</b>
Company	<b>Tenneco Oil Company</b>
Date	<b>May 21, 1964</b>

I hereby certify that the well location shown on the plat in SECTION B was plotted from field notes of actual surveys made by me or under my supervision, and that the same is true and correct to the best of my knowledge and belief.

Date Surveyed	<b>MAY 21, 1964</b>
Registered Professional Engineer and/or Land Surveyor,	<b>JOHN W. WEST</b>
Certificate No.	<b>N. M. - P. E. &amp; L. S. NO. 676</b>

0 330 660 990 1320 1650 1980 2310 2640 2000 1500 1000 500