

NEW MEXICO OIL CONSERVATION COMMISSION
SOUTHEAST NEW MEXICO PACKER LEAKAGE TEST

Operator Texas Pacific Oil Company			Lease Carlson		Well No. 2	
Location of Well	Unit C	Sec 26	Twp 25 S	Rge 37 E	County Lea	
	Name of Reservoir or Pool		Type of Prod (Oil or Gas)	Method of Prod Flow, Art Lift	Prod. Medium (Tbg or Csg)	Choke Size
Upper Compl	Justis Paddock		Oil	Flow	Tbg	---
Lower Compl	Justis Kinney		Oil	Pump	Tbg	3/4

FLOW TEST NO. 1

Both zones shut-in at (hour, date): 12:30 PM April 14, 1969

Well opened at (hour, date): 10:00 AM April 15, 1969

	Upper Completion	Lower Completion
Indicate by (X) the zone producing.....		X
Pressure at beginning of test.....	668	538
Stabilized? (Yes or No).....	Yes	Yes
Maximum pressure during test.....	668	538
Minimum pressure during test.....	668	42
Pressure at conclusion of test.....	668	42
Pressure change during test (Maximum minus Minimum).....	0	496
Was pressure change an increase or a decrease?.....	No Change	Decrease

Well closed at (hour, date): 10:00 AM April 16, 1969

Oil Production _____ Gas Production _____

During Test: 8 bbls; Grav. 36; During Test 39 MCF; GOR 4.875

Remarks _____

FLOW TEST NO. 2

	Upper Completion	Lower Completion
Well opened at (hour, date): _____		
Indicate by (X) the zone producing.....	X	
Pressure at beginning of test... Buildup pressure 10:00 AM April 17, 1969 ...	668	147
Stabilized? (Yes or No).....		
Maximum pressure during test.....		
Minimum pressure during test.....		
Pressure at conclusion of test.....		
Pressure change during test (Maximum minus Minimum).....		
Was pressure change an increase or a decrease?.....		

Well closed at (hour, date) _____

Oil Production _____ Gas Production _____

During Test: _____ bbls; Grav. _____; During Test _____ MCF; GOR _____

Remarks Annual test. Paddock zone is shut in.

I certify that the information herein contained is true and complete to the best of my knowledge.

Operator Texas Pacific Oil Company
By H. L. Smith
Title Tester - Oil Reports & Gas Services
Date April 20, 1969

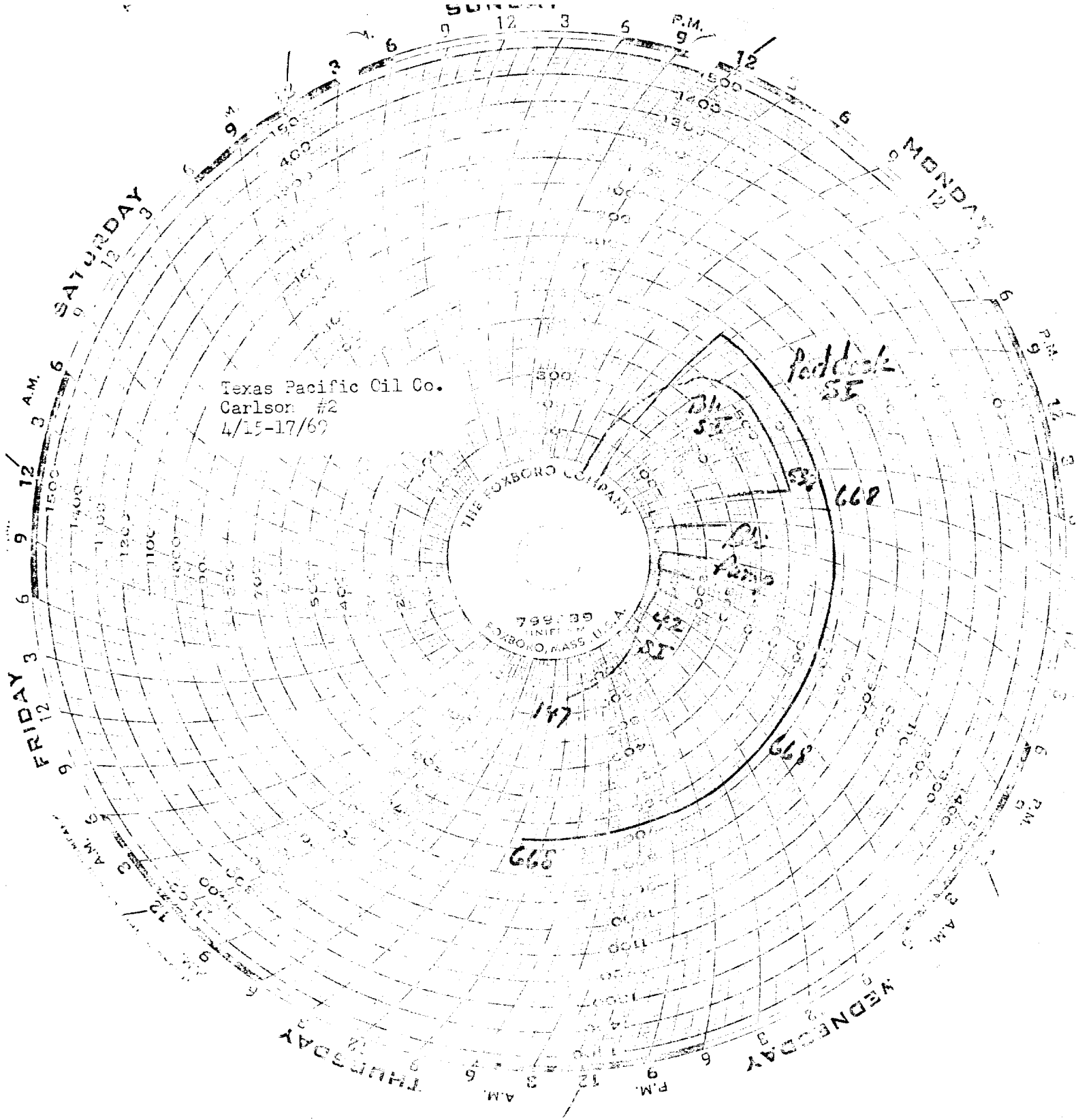
Oil Conservation Commission
[Signature]
19 69

SOUTHEAST NEW MEXICO PACKER LEAKAGE TEST INSTRUCTIONS

1. A packer leakage test shall be commenced on a multiply completed well within seven days after actual completion of the well, and annually thereafter as prescribed by the order authorizing the multiple completion. Such tests shall also be commenced on all multiple completions within seven days following recompletion and/or chemical or fracture treatment, and whenever remedial work has been done on a well during which the packer or the tubing have been disturbed. Tests shall also be taken at any time that communication is suspected or when requested by the Commission.
2. At least 72 hours prior to the commencement of any packer leakage test, the operator shall notify the Commission in writing of the exact time the test is to be commenced. Offset operators shall also be so notified.
3. The packer leakage test shall commence when both zones of the dual completion are shut-in for pressure stabilization. Both zones shall remain shut-in until the well-head pressure in each has stabilized and for a minimum of two hours thereafter, provided however, that they need not remain shut-in more than 24 hours.
4. For Flow Test No. 1, one zone of the dual completion shall be produced at the normal rate of production while the other zone remains shut-in. Such test shall be continued until the flowing wellhead pressure has become stabilized and for a minimum of two hours thereafter, provided however, that the flow test need not continue for more than 24 hours.

5. Following completion of Flow Test No. 1, the well shall again be shut-in, in accordance with paragraph 3 above.
6. Flow Test No. 2 shall be conducted even though no leak was indicated during Flow Test No. 1. Procedure for Flow Test No. 2 is to be the same as for Flow Test No. 1 except that the previously produced zone shall remain shut-in while the previously shut-in zone is produced.
7. All pressures, throughout the entire test, shall be continuously measured and recorded with recording pressure gauges, the accuracy of which must be checked with a deadweight tester at least twice, once at the beginning and once at the end, of each flow test.
8. The results of the above-described tests shall be filed in triplicate within 15 days after completion of the test. Tests shall be filed with the appropriate District Office of the New Mexico Oil Conservation Commission on Southeast New Mexico Packer Leakage Test Form Revised 11-1-58, together with the original pressure recording gauge charts with all the deadweight pressures which were taken indicated thereon. In lieu of filing the aforesaid charts, the operator may construct a pressure versus time curve for each zone of each test, indicating thereon all pressure changes which may be reflected by the gauge charts as well as all deadweight pressure readings which were taken. If the pressure curve is submitted, the original chart must be permanently filed in the operator's office. Form C-116 shall also accompany the Packer Leakage Test Form when the test period coincides with a gas-oil ratio test period.

Graph area with grid lines and a stamp at the bottom right: HUBBS OFFICE D.C.C. MAY 8 2 36 AM '69



Texas Pacific Oil Co.
Carlson #2
4/15-17/69

THE FOXBORO COMPANY

799-39
FOSBORO, MASS. U.S.A.

Poddeck
SE

668

668

147

668

WEDNESDAY

THURSDAY

FRIDAY

SATURDAY

MONDAY

SUNDAY