

(SUBMIT IN TRIPLICATE)

UNITED STATES
DEPARTMENT OF THE INTERIOR
GEOLOGICAL SURVEY

at Bureau No. 42-R358.4.
Form Approved.

Land Office _____
Lease No. NM-0450819
Unit _____

SUNDRY NOTICES AND REPORTS ON WELLS

NOTICE OF INTENTION TO DRILL	<input checked="" type="checkbox"/>	SUBSEQUENT REPORT OF WATER SHUT-OFF	
NOTICE OF INTENTION TO CHANGE PLANS		SUBSEQUENT REPORT OF SHOOTING OR ACIDIZING	
NOTICE OF INTENTION TO TEST WATER SHUT-OFF		SUBSEQUENT REPORT OF ALTERING CASING	
NOTICE OF INTENTION TO RE-DRILL OR REPAIR WELL		SUBSEQUENT REPORT OF RE-DRILLING OR REPAIR	
NOTICE OF INTENTION TO SHOOT OR ACIDIZE		SUBSEQUENT REPORT OF ABANDONMENT	
NOTICE OF INTENTION TO PULL OR ALTER CASING		SUPPLEMENTARY WELL HISTORY	
NOTICE OF INTENTION TO ABANDON WELL			

(INDICATE ABOVE BY CHECK MARK NATURE OF REPORT, NOTICE, OR OTHER DATA)

August 16, 1965
Federal Mounsey "B"
Well No. 1 is located 660 ft. from S line and 660 ft. from W line of sec. 5
SW/4 5 25S 35E NMPM
(1/4 Sec. and Sec. No.) (Twp.) (Range) (Meridian)
Wildcat Lea New Mexico
(Field) (County or Subdivision) (State or Territory)

The elevation of the derrick floor above sea level is Later ft.

DETAILS OF WORK

(State names of and expected depths to objective sands; show sizes, weights, and lengths of proposed casings; indicate mudlogging jobs, cementing points, and all other important proposed work)

It is proposed to drill with rotary tools to the Delaware Sand at approximately 5800'.

Hole Size	Csg. Size	Csg. Wt.	Feet	Sx. Cmt.
11"	8-5/8"	24#	350	Circulate
6-3/4"	4-1/2"	9.5#	5800	425

I understand that this plan of work must receive approval in writing by the Geological Survey before operations may be commenced.

Company Gulf Oil Corporation

Address P. O. Box 980

Kermit, Texas

By M. M. Whitaker

Title Area Engineer

NEW MEXICO OIL CONSERVATION COMMISSION WELL LOCATION AND ACREAGE DEDICATION PLAT

Form C-102
Supersedes C-128
Effective 1-1-65

All distances must be from the outer boundaries of the Section.

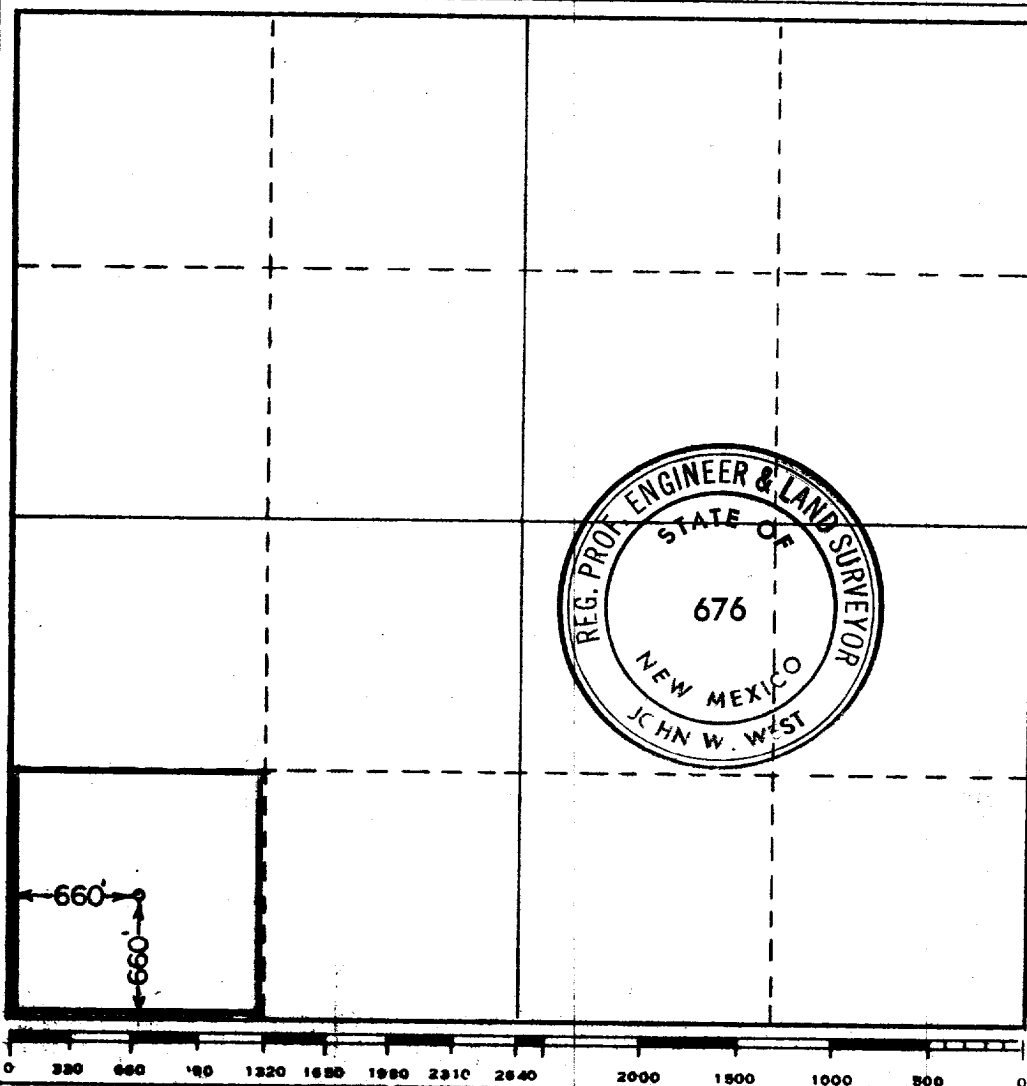
Operator GULF OIL CORP			Lease FEDERAL MOUNZEY "B" 45 AM '65			Well No. 1
Unit Letter M	Section 5	Township 25 SOUTH	Range 35 EAST	County LEA		
Actual Footage Location of Well: 660 feet from the SOUTH line and 660 feet from the WEST line						
Ground Level Elev:	Producing Formation Delaware		Pool Wildcat		Dedicated Acreage: 40 Acres	

1. Outline the acreage dedicated to the subject well by colored pencil or hachure marks on the plat below.
2. If more than one lease is dedicated to the well, outline each and identify the ownership thereof (both as to working interest and royalty).
3. If more than one lease of different ownership is dedicated to the well, have the interests of all owners been consolidated by communitization, unitization, force-pooling, etc?

☐ Yes ☐ No If answer is "yes," type of consolidation _____

If answer is "no," list the owners and tract descriptions which have actually been consolidated. (Use reverse side of this form if necessary.) _____

No allowable will be assigned to the well until all interests have been consolidated (by communitization, unitization, forced-pooling, or otherwise) or until a non-standard unit, eliminating such interests, has been approved by the Commission.



CERTIFICATION

I hereby certify that the information contained herein is true and complete to the best of my knowledge and belief.

ORIGINAL SIGNED

Name BY **W. W. WHITAKER**

Position **Area Engineer**

Company **Gulf Oil Corporation**

Date **8-16-65**

I hereby certify that the well location shown on this plat was plotted from field notes of actual surveys made by me or under my supervision, and that the same is true and correct to the best of my knowledge and belief.

Date Surveyed **AUGUST 13, 1965**

Registered Professional Engineer and/or Land Surveyor

John W. West
Certificate No. **676**

COUNTY		LEA		FIELD Wildcat		STATE NM	
WC	OPR	GULF OIL CORPORATION					MAP
		1 Mounsey-Federal "B"					
		Sec. 5, T-25-S, R-35-E					CO-ORD
		660' fr S & W Lines of Sec.					
		Spd 8-24-65					
		Cmp 9-3-65					
		CLASS					
		FORMATION		DATUM		FORMATION	
		DATUM					
CSG & SX - TUBING		LOG:		Rust 848			
8 5/8" 372' 220				B/Salt 3670			
				Lamar 5384			
				Del sd 5422			
LOGS EL GR RA IND HC A							
				TD 5600'			
PLUGGED & ABANDONED							

Distribution limited and publication prohibited by subscribers' agreement.
Reproduction rights reserved by Williams & Lee Scouting Service, Inc.

CONT. Johnn Drlg. Co. PROP DEPTH 5800' TYPE
DATE

8-30-65 F.R. 8-26-65; Oper's Elev. 3296' KB
9-7-65 PD 5800' - Delaware
Contractor - Johnn Drlg. Co.
Drlg. 4270'.
TD 5600', PLUGGED & ABANDONED.
No cores or tests.
Ran logs.

