

COUNTY	LEA	FIELD	Fowler	STATE	NM
OPR	PAN AMERICAN PETROLEUM CORP.				MAP
18 South Mattix Unit-Federal					
Sec. 22, T-24-S, R-37-E				CO-ORD	
1980' fr N Line & 1830' fr E Line of Sec.					
Spd 5-24-65; Cmp 7-28-65 (Paddock); CLASS				Elev. [REDACTED]	
Cmp 6-30-65 (Bli)		FORMATION	DATUM	FORMATION	DATUM
LOG:		Glor 4867			
CSG & SX - TUBING		Bli 5355			
9 5/8"	1034'	585			
7"	5770'	570			
LOGS EL GR RA IND HC A					
		TD 5770',	PBD 5730'		

IP Paddock Perfs 5227-90' Flwd 79 BOPD. Pot. Based on 24 hr test thru 8/64" chk., TP 1075#, gravity 38., GOR 6350.

IP Blinebry Perfs 5406-5683' Flwd 109 BOPD. Pot. Based on 24 hr test thru 12/64" chk., TP 375#, gravity 38., GOR 1250.

Distribution limited and publication prohibited by subscribers' agreement.
Reproduction rights reserved by Williams & Lee Scouting Service, Inc.

CONT. Cactus Drlg. Co. PROP DEPTH 5750' TYPE
DATE

F.R. 5-27-65; Oper's Elev. 3264' KB
PD 5750' - Blinebry
Contractor - Cactus Drlg. Co.

6-1-65 Drlg. 3500'.
6-7-65 Drlg. 4908'.
6-14-65 TD 5770', running logs.
6-21-65 TD 5770', prep to frac.
Perf (Blinebry) 5406-08', 5418-22', 5446-48',
5524-26', 5534-37', 5556-58', 5574-76', 5653-
55', 5668-71', 5680-83' W/2 SPF
Ac. 2500 gals.
Swbd & Flwd 43 BLO, 22 BNO, 60 BAW + 16 BNW/22 hrs.

6-28-65 TD 5770', PBD 5730', flwg load.
Frac 30,000 gals oil + 3000# glass beads.
Flwd 328 BLO/24 hrs thru 10/64" chk., TP 590#.

7-6-65 TD 5770', PBD 5730', tstg.
Perf (Paddock) 5280-90' W/2 SPF
Ac. 1000 gals.,
Swbd 30 BLO + 13 BAW/6 hrs & Swbd Down.

7-12-65 TD 5770', PBD 5730', tstg.
Set BP @ 5270'
Perf (Paddock) 5227-54' W/2 SPF
Ac. 3000 gals.
Flwd 291 BNO, 4 BLW + 16 BNW/72 hrs thru
8/64" chk., TP 100#, GOR 1612.
7-19-65 TD 5770', PBD 5730', flwg load.
Pulled BP @ 5270'
Frac 20,000 gals oil + 30,000# sd. 5227-90'
Flwd 350 BLC + 10 BW/72 hrs thru 8/64" chk.,
TP 1200-875#, GOR 7800.
7-26-65 TD 5770', PBD 5730', prep to dual complete.
Flwd 64 BLO + 21 BNO/24 hrs thru 8/64" chk.,
TP 1070#, GOR 5900 (5227-90')
8-2-65 TD 5770', PBD 5730', COMPLETED.

OWWO
 STATE NM MN 21307
 COUNTY LRA FIELD Fowler
 AMOCO PRODUCTION CO.
 18 South Matlix Unit Federal
 Sec 22, T-24-S, R-37-E
 1980' FNL, 1830' FEL of Sec

		CLASS		OWDP	
		FORMATION	DATUM	FORMATION	DATUM
Re-Cap 8-23-71					
9 5/8" at 1034'					
7" at 5770' w/5730'					

TD 5770'; PBD 5730'
 (Upper Yesso) Perfs 5220-5083' NO NEW POTENTIAL

Distribution limited and publication prohibited by subscribers' agreement.
 Reproduction rights reserved by Williams & Lee Scouting Service, Inc.

PROP DEPTH 5382' TYPE WO
 CONT.
 DATE

F.R.C. 9-16-71; Opr's Elev. 3264' KB
 PD 5382' WO (Upper Yesso)
 (Orig. Pan American Pet. Corp. comp. 7-28-65',
 thru (Paddock) Perfs 5220-90' & (Blinbry)
 10,000' AB
 (SP)
 9-16-71

NEW MEXICO OIL CONSERVATION COMMISSION
WELL LOCATION AND ACREAGE DEDICATION PLAT

Form C-102
Supersedes C-128
Effective 1-1-65

All distances must be from the outer boundaries of the Section.

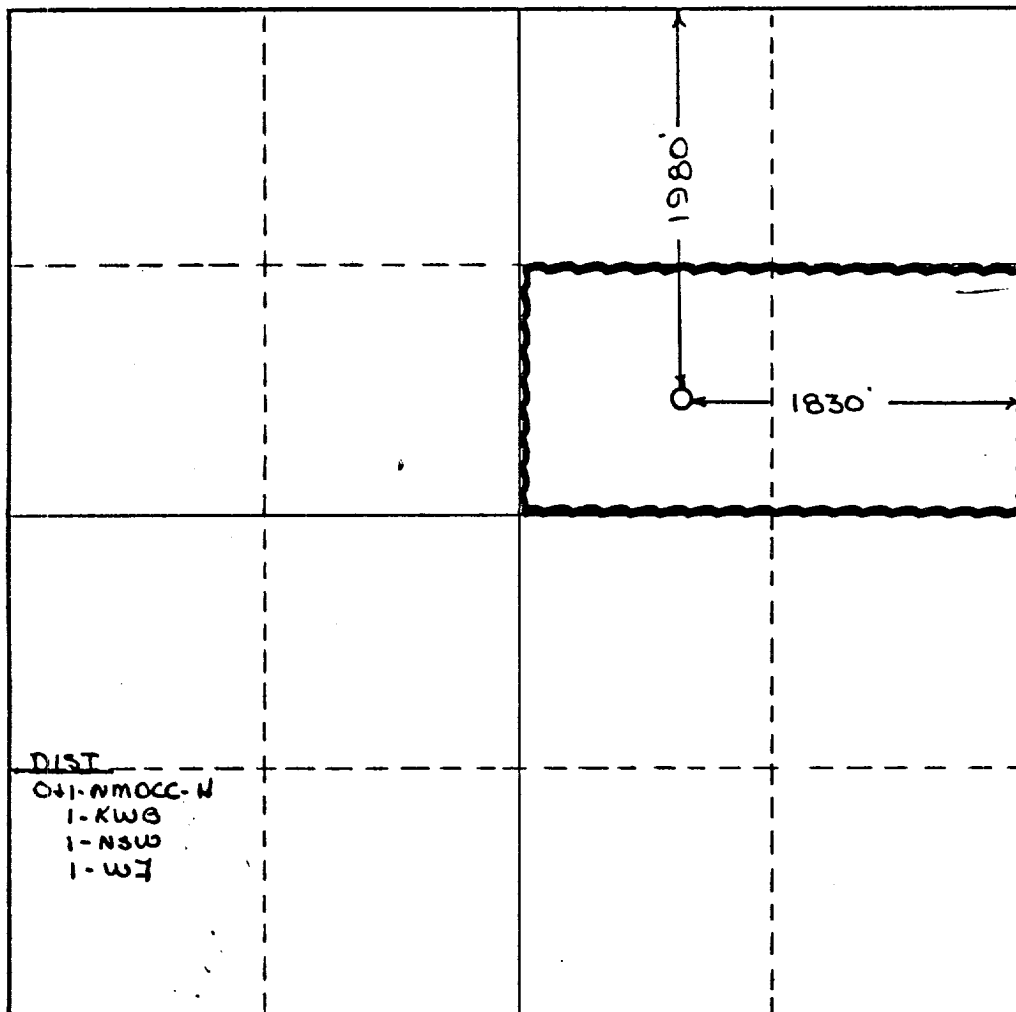
Operator <i>Pan American Petro. Corp.</i>		Lease <i>South Mattie Unit</i>		Date <i>Jan '66</i>		Well No. <i>18</i>	
Unit Letter <i>G</i>	Section <i>22</i>	Township <i>24-S</i>	Range <i>37-E</i>	County <i>Lea</i>			
Actual Footage Location of Well: <i>1980'</i> feet from the <i>NORTH</i> line and <i>1830</i> feet from the <i>EAST</i> line							
Ground Level Elev. <i>3264' RDB</i>	Producing Formation <i>LOWER PADDOCK</i>		Pool <i>FOULMER LOWER PADDOCK-OIL</i>		Dedicated Acreage: <i>80</i> Acres		

1. Outline the acreage dedicated to the subject well by colored pencil or hachure marks on the plat below.
2. If more than one lease is dedicated to the well, outline each and identify the ownership thereof (both as to working interest and royalty).
3. If more than one lease of different ownership is dedicated to the well, have the interests of all owners been consolidated by communitization, unitization, force-pooling, etc?

☐ Yes ☐ No If answer is "yes," type of consolidation _____

If answer is "no," list the owners and tract descriptions which have actually been consolidated. (Use reverse side of this form if necessary.) _____

No allowable will be assigned to the well until all interests have been consolidated (by communitization, unitization, forced-pooling, or otherwise) or until a non-standard unit, eliminating such interests, has been approved by the Commission.



CERTIFICATION

I hereby certify that the information contained herein is true and complete to the best of my knowledge and belief.

Name _____

Position _____

Company _____

PAN AMERICAN PETROLEUM CORPORATION

Date _____

7-21-66

I hereby certify that the well location shown on this plat was plotted from field notes of actual surveys made by me or under my supervision, and that the same is true and correct to the best of my knowledge and belief.

Date Surveyed _____

Registered Professional Engineer and/or Land Surveyor

Certificate No. _____

0 330 660 990 1320 1650 1980 2310 2640 2970 3300 3630 3960 4290 4620 4950 5280 5610 5940 6270 6600

**NEW MEXICO OIL CONSERVATION COMMISSION
WELL LOCATION AND ACREAGE DEDICATION PLAT**

Form C-102
Supersedes C-1
Effective 1-1-6.

All distances must be from the outer boundaries of the Section.

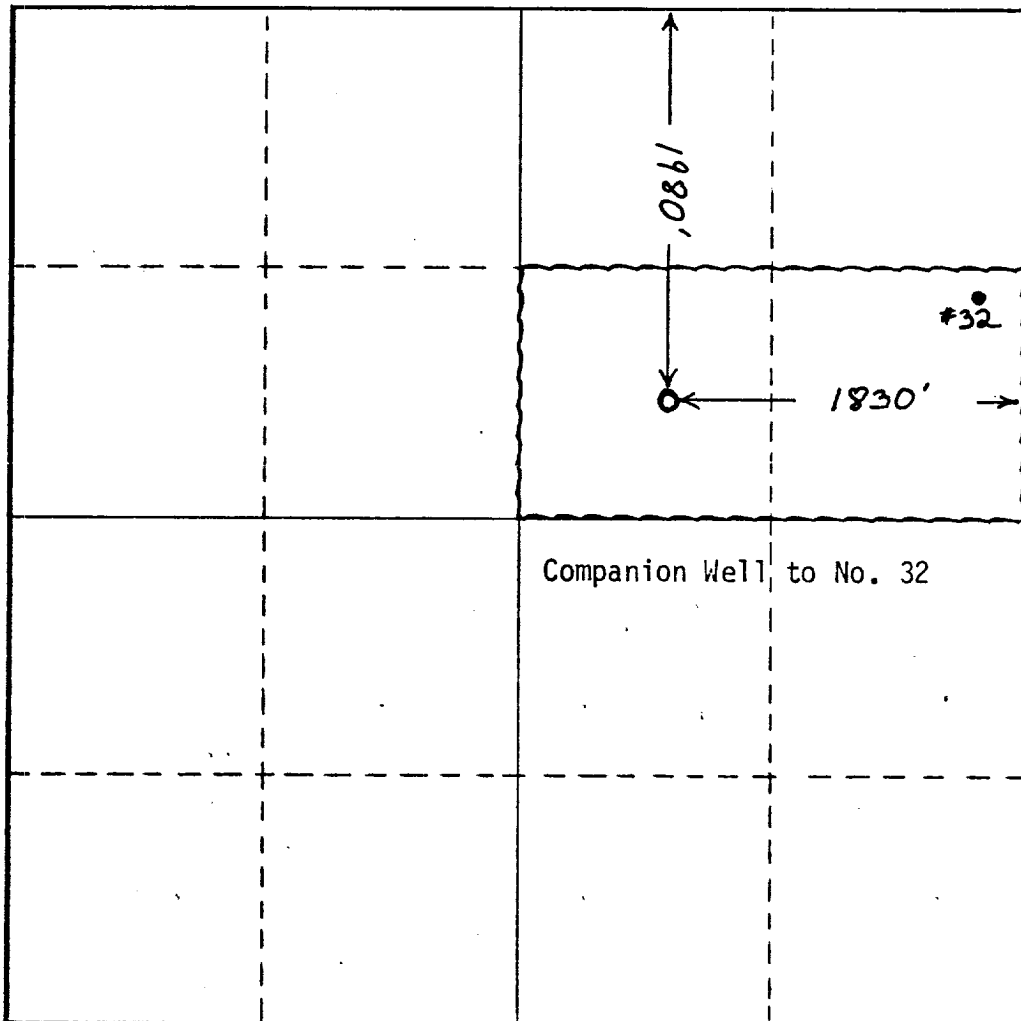
Operator Amoco Production Company			Lease South Mattix Unit		Well No. 18
Unit Letter G	Section 22	Township 24-S	Range 37-E	County Lea	
Actual Footage Location of Well:					
1980		feet from the	North	line and	1830
				feet from the	East
				line	
Ground Level Elev. 3264' RDB	Producing Formation Upper Yeso		Pool Fowler Upper Yeso		Dedicated Acreage: 80 Acres

1. Outline the acreage dedicated to the subject well by colored pencil or hachure marks on the plat below.
2. If more than one lease is dedicated to the well, outline each and identify the ownership thereof (both as to working interest and royalty).
3. If more than one lease of different ownership is dedicated to the well, have the interests of all owners been consolidated by communitization, unitization, force-pooling, etc?

☒ Yes ☐ No If answer is "yes," type of consolidation Unitized

If answer is "no," list the owners and tract descriptions which have actually been consolidated. (Use reverse side of this form if necessary.) _____

No allowable will be assigned to the well until all interests have been consolidated (by communitization, unitization, forced-pooling, or otherwise) or until a non-standard unit, eliminating such interests, has been approved by the Commission.



CERTIFICATION

I hereby certify that the information contained herein is true and complete to the best of my knowledge and belief.

Name Randy Atkins
Position Administrative Analyst

Company Amoco Production Company

Date March 12, 1979

I hereby certify that the well location shown on this plat was plotted from field notes of actual surveys made by me or under my supervision, and that the same is true and correct to the best of my knowledge and belief.

Date Surveyed _____

Registered Professional Engineer
and/or Land Surveyor _____

Certificate No. _____

