

UNITED STATES
DEPARTMENT OF THE INTERIOR
GEOLOGICAL SURVEY

COPY TO O.C.C.

APPLICATION FOR PERMIT TO DRILL, DEEPEN, OR PLUG BACK

1a. TYPE OF WORK

DRILL ☒DEEPEN ☐PLUG BACK ☐

b. TYPE OF WELL

OIL
WELL ☐GAS
WELL ☒

OTHER

SINGLE
ZONE ☒MULTIPLE
ZONE ☐

2. NAME OF OPERATOR

Continental Oil Company

3. ADDRESS OF OPERATOR

Box 460, Hobbs, New Mexico

4. LOCATION OF WELL (Report location clearly and in accordance with any State requirements.)*

At surface

660' FNL & 1650 FWL of Sec. 1 T-25S, R-36E, Lea County

At proposed prod. zone New Mexico, NMPM

14. DISTANCE IN MILES AND DIRECTION FROM NEAREST TOWN OR POST OFFICE*

15. DISTANCE FROM PROPOSED* 660' FNL of Sec. 1
LOCATION TO NEAREST
PROPERTY OR LEASE LINE, FT.
(Also to nearest drlg. line, if any)

25-36

16. NO. OF ACRES IN LEASE

420

17. NO. OF ACRES ASSIGNED
TO THIS WELL

320

18. DISTANCE FROM PROPOSED LOCATION* 2640' West
TO NEAREST WELL, DRILLING, COMPLETED,
OR APPLIED FOR, ON THIS LEASE, FT. of Wells B-1 No. 1

19. PROPOSED DEPTH

13,000

20. ROTARY OR CABLE TOOLS

Rotary

21. ELEVATIONS (Show whether DF, RT, GR, etc.)

3250 DF (Est)

22. APPROX. DATE WORK WILL START*

November 5, 1964

23.

PROPOSED CASING AND CEMENTING PROGRAM

SIZE OF HOLE	SIZE OF CASING	WEIGHT PER FOOT	SETTING DEPTH	QUANTITY OF CEMENT
17 1/2"	13 3/8" OD	48#	1200	880
12 1/4"	9 5/8" OD	36#	4000	700
7 3/4"	5 1/2" OD	17,20#	13,000	600

It is proposed to drill the Wells B-1 Well No. 3 using the following procedure: 1) Drill with native mud & water to approximately 1200'. Set and cement 13 3/8" surface casing. 2) Drill with salt water from surface casing to approximately 4000'. Run programmed surveys. Set and cement 9 5/8" intermediate string. 3) Set and cement 5 1/2" casing, provided commercial production is indicated and run GR-collar log. 4) Perforate Ellenburger as determined from logs, 50 holes approximately and acidize with approximately 8000 gallons of 15% LSTNE using ball sealers. (Size of treatment is dependent upon perforated interval.) 5.) Swab and complete.

This is a replacement well for Wells B-1 No. 2 which was P&A as a result of fire.

Your approval for the above work is requested.

IN ABOVE SPACE DESCRIBE PROPOSED PROGRAM: If proposal is to deepen or plug back, give data on present productive zone and proposed new productive zone. If proposal is to drill or deepen directionally, give pertinent data on subsurface locations and measured and true vertical depths. Give blowout preventer program, if any.

24.

SIGNED ROBERT GAULT JR.

SIGNED

TITLE Staff Supervisor

TITLE

DATE 12-8-64

DATE

(This space for Federal or State office use)

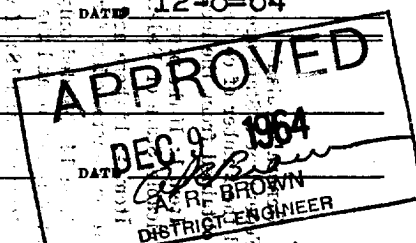
PERMIT NO.

APPROVAL DATE

APPROVED BY

TITLE

CONDITIONS OF APPROVAL, IF ANY:



JSGS-5NMOCC-2 JM PAN AM HOBBS-3 ATL-ROS-2, CALIF HOUSTON & MIDLAND (1 Each)

*See Instructions On Reverse Side

NEW MEXICO OIL CONSERVATION COMMISSION
WELL LOCATION AND ACREAGE DEDICATION PLAT

FORM C-128
Revised 5/1/57

SEE INSTRUCTIONS FOR COMPLETING THIS FORM ON THE REVERSE SIDE

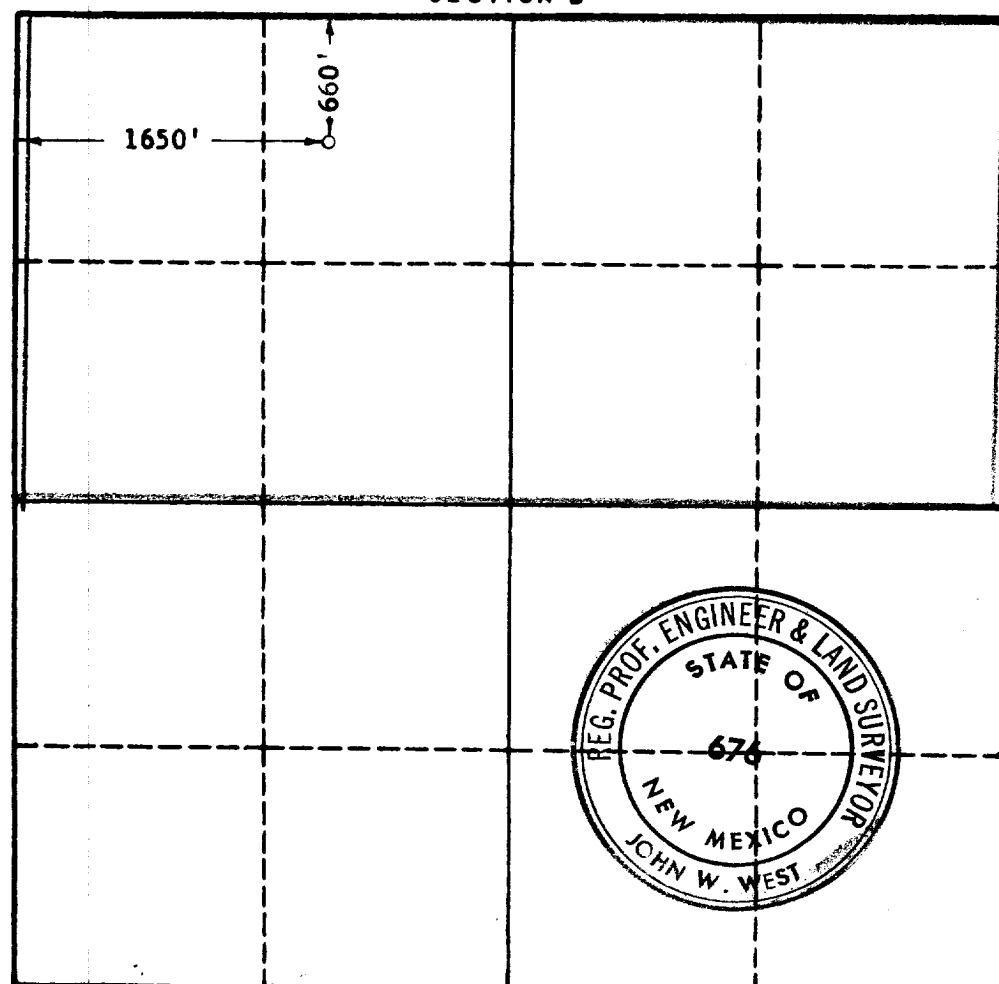
SECTION A

Operator CONTINENTAL OIL COMPANY		Lease WELLS B1		Well No. 3
Unit Letter C	Section 1	Township 25 SOUTH	Range 36 EAST	County LEA
Actual Footage Location of Well: 660 feet from the NORTH line and 1650 feet from the WEST line				
Ground Level Elev. 3840	Producing Formation Ellenburger	Pool Custer Ellenburger	Dedicated Acreage: 320 Acres	

1. Is the Operator the only owner in the dedicated acreage outlined on the plat below? YES ☒ NO ☐ ("Owner" means the person who has the right to drill into and to produce from any pool and to appropriate the production either for himself or for himself and another. (65-3-29 (e) NMSA 1935 Comp.)
2. If the answer to question one is "no," have the interests of all the owners been consolidated by communitization agreement or otherwise? YES ☐ NO ☐ If answer is "yes," Type of Consolidation _____
3. If the answer to question two is "no," list all the owners and their respective interests below:

Owner	Land Description

SECTION B



CERTIFICATION

I hereby certify that the information in SECTION A above is true and complete to the best of my knowledge and belief.

Name SIGNED: ROBERT GAULT III
Position Staff Supervisor
Company Continental Oil Company
Date 12-8-64

USGS-5 NMOC-2 JN

I hereby certify that the well location shown on the plat in SECTION B was plotted from field notes of actual surveys made by me or under my supervision, and that the same is true and correct to the best of my knowledge and belief.

Date Surveyed DECEMBER 7, 1964
Registered Professional Engineer and/or Land Surveyor, JOHN W. WEST John W. West
Certificate No. N.M. - P.E. & L.S. NO. 676

0 330 660 990 1320 1650 1980 2310 2640 2000 1600 1200 800 400 0

ELF