

NEW MEXICO OIL CONSERVATION COMMISSION
WELL LOCATION AND ACREAGE DEDICATION PLAT

Form C-102
Supersedes C-128
Effective 1-1-65

All distances must be from the outer boundaries of the Section.

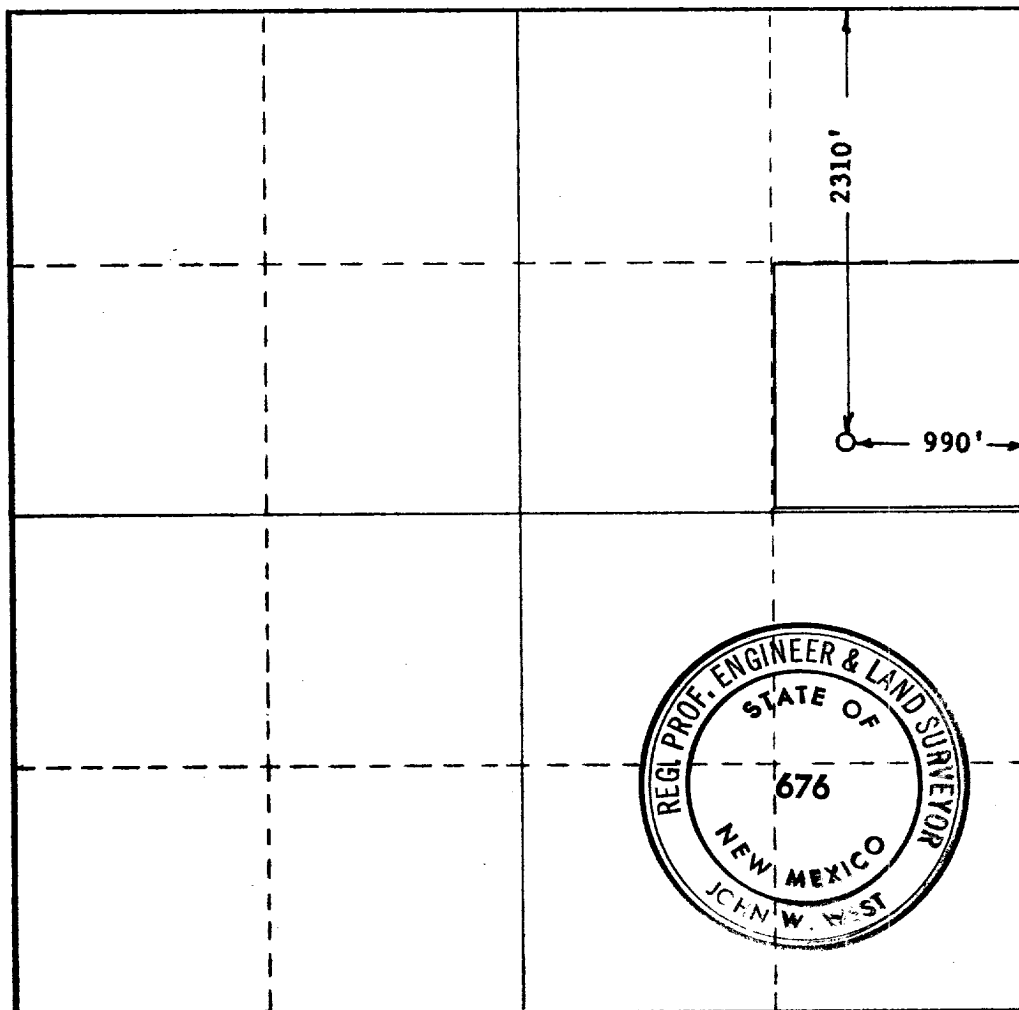
| | | | | | |
|---|--|-----------------------------|---------------------------------------|----------------------|--|
| Operator C. R. A., INC. | | Lease CARLSON | | Well No. 6 | |
| Unit Letter H | Section 13 | Township 25 SOUTH | Range 37 EAST | County LEA | |
| Actual Footage Location of Well: 990 feet from the EAST line and 2310 feet from the NORTH line | | | | | |
| Ground Level Elev. 3086 | Producing Formation BLINEBRY | Pool JUSTIS | Dedicated Acreage: 40 Acres | | |

1. Outline the acreage dedicated to the subject well by colored pencil or hachure marks on the plat below.
2. If more than one lease is dedicated to the well, outline each and identify the ownership thereof (both as to working interest and royalty).
3. If more than one lease of different ownership is dedicated to the well, have the interests of all owners been consolidated by communitization, unitization, force-pooling, etc?

☐ Yes ☐ No If answer is "yes," type of consolidation _____

If answer is "no," list the owners and tract descriptions which have actually been consolidated. (Use reverse side of this form if necessary.) _____

No allowable will be assigned to the well until all interests have been consolidated (by communitization, unitization, forced-pooling, or otherwise) or until a non-standard unit, eliminating such interests, has been approved by the Commission.



CERTIFICATION

I hereby certify that the information contained herein is true and complete to the best of my knowledge and belief.

Name
L. E. Chaffin
Position
Prod. Supt.
Company
CRA, Inc.
Date
10-14-65

I hereby certify that the well location shown on this plat was plotted from field notes of actual surveys made by me or under my supervision, and that the same is true and correct to the best of my knowledge and belief.

Date Surveyed
10-14-1965
Registered Professional Engineer and/or Land Surveyor

John W. West
Certificate No.
676



| | | | | | |
|---|--|---------------------|-------|-----------------|-------|
| COUNTY <u>LEA</u> | | FIELD <u>Justis</u> | | STATE <u>NM</u> | |
| OPR <u>CRA, INC.</u> | | MAP | | | |
| <u>6 Carlson B-13</u> | | | | | |
| <u>Sec. 13, T-25-S, R-37-E</u> | | | | | |
| <u>2310' FNL & 990' FEL of Sec.</u> | | | | | |
| <u>Spd 11-10-65</u> | | | | | |
| <u>Cmp 12-12-65</u> | | CLASS <u>E</u> | | | |
| | | FORMATION | DATUM | FORMATION | DATUM |
| CSG & SX - TUBING | | | | | |
| 8 5/8" 1003' 550 | | | | | |
| 5 1/2" 5575' 1680 | | | | | |
| | | | | | |
| | | | | | |
| LOGS EL GR RA IND HC A | | | | | |
| | | TD 5575' | | | |

IP Blinebry Perfs 5255-5480' Flwd 225 BOPD + 22 BW. Pot. Based on 7 hr test of 66 BO + 7 BW thru 20/64" chk., TP 300#, CP 400#, gravity 38., GOR 272.


Distribution limited and publication prohibited by subscribers' agreement.
Reproduction rights reserved by Williams & Lee Scouting Service, Inc.

CONT. Leatherwood Drlg. Co. PROP DEPTH 5525' TYPE

F.R. 10-21-65; Opr's Elev. 3086' GL
PD 5525' - Blinebry
Contractor - Leatherwood
11-15-65 Drlg. 1840' anhy & salt
8 5/8" @ 1003' w/550 sx.
11-22-65 Drlg. 3608' anhy & lm.
11-29-65 Drlg. 4973' lm.
12-6-65 TD 5575', WOC.
5 1/2" casing @ 5575' W/1680 sx.
12-13-65 TD 5575', tstg.
Perf @ 5255', 5268', 5279', 5299', 5323',
5346', 5374', 5382', 5401', 5419', 5427',
5455', 5480' W/1 SPI
Ac. (5255-5480') 2000 gals.
Frac (5255-5480') 25,000 gals oil + 25,000#
sd.

LEA Justis NM
CRA, INC., #6 Carlson B-13

Sec. 13-25S-37E
Page #2

-13-65 Continued
Rec'd load
Flwg @ rate of $9\frac{1}{2}$ BNCPH thru 20/64" chk.,
TP 200#.
12-20-65 TD 5575', COMPLETED.
LOG TOPS: Glorieta 4774', Paddock 5005',
Bliebry 5212' (-2118')