

NEW MEXICO OIL CONSERVATION COMMISSION
WELL LOCATION AND ACREAGE DEDICATION PLAT

Form C-102
Supersedes C-128
Effective 1-1-65

All distances must be from the outer boundaries of the Section.

Operator Mobil Oil Corporation		Lease Langlie-Mattix Queen Unit		Well No. 15
Unit Letter	Section 15	Township 25-S	Range 37-E	County Lea
Actual Footage Location of Well:				
1980 feet from the North line and		1730 feet from the West line		
Ground Level Elev. 3106	Producing Formation Queen	Pool Langlie-Mattix	Dedicated Acreage: Acres	

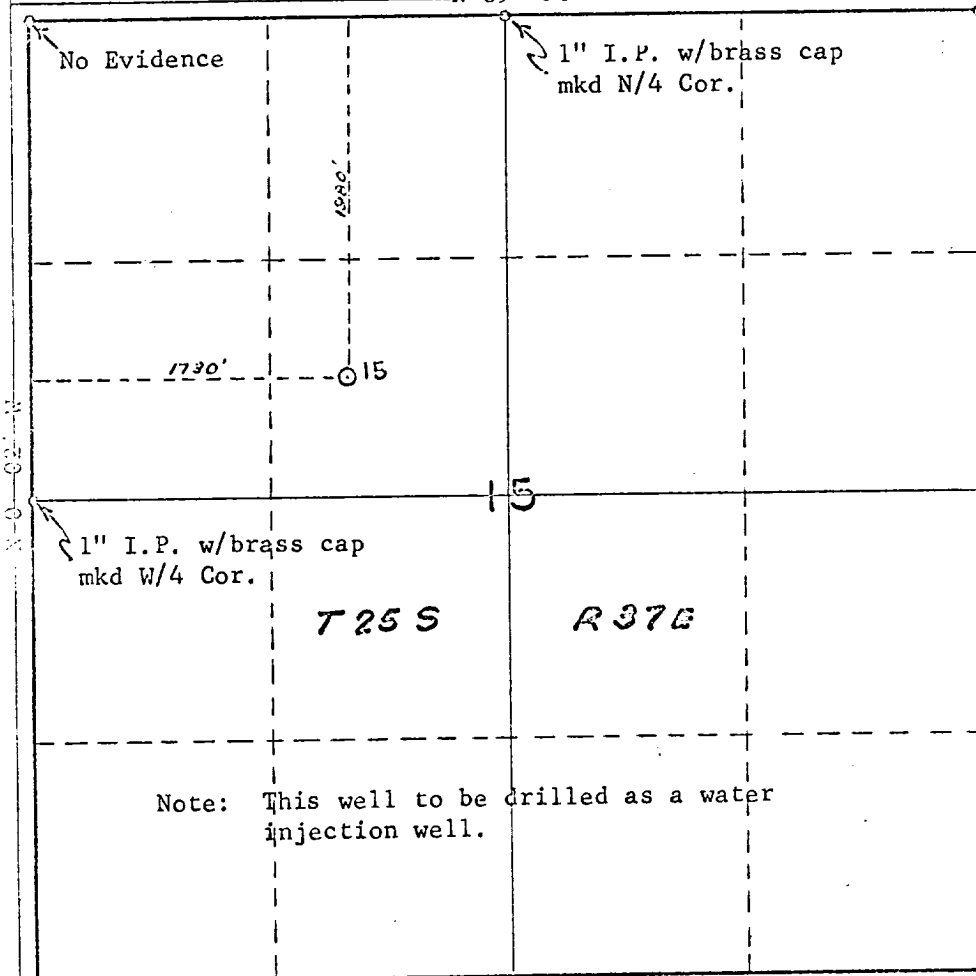
1. Outline the acreage dedicated to the subject well by colored pencil or hachure marks on the plat below.
2. If more than one lease is dedicated to the well, outline each and identify the ownership thereof (both as to working interest and royalty).
3. If more than one lease of different ownership is dedicated to the well, have the interests of all owners been consolidated by communitization, unitization, force-pooling, etc?

☐ Yes ☐ No If answer is "yes," type of consolidation _____

If answer is "no," list the owners and tract descriptions which have actually been consolidated. (Use reverse side of this form if necessary.) _____

No allowable will be assigned to the well until all interests have been consolidated (by communitization, unitization, forced-pooling, or otherwise) or until a non-standard unit, eliminating such interests, has been approved by the Commission.

N 89° 58' E



CERTIFICATION

I hereby certify that the information contained herein is true and complete to the best of my knowledge and belief.

Name

A. D. Bond

Position

Proration Staff Assistant

Company

Mobil Oil Corporation

Date

September 23, 1969

I hereby certify that the well location shown on this plat was plotted from field notes of actual surveys made by me or under my supervision, and that the same is true and correct to the best of my knowledge and belief.

Professional Engineer
No. 3572
September 5, 1969

Registered Professional Engineer
and/or Land Surveyor

John H. Seerey

Certificate No.

3572

0 330 600 190 1320 1650 1980 2310 2640 2000 1500 1000 500 0