

UNITED STATES
DEPARTMENT OF THE INTERIOR
BUREAU OF LAND MANAGEMENT

FORM APPROVED
Budget Bureau No. 1004-0135
Expires: September 30, 1990

SUNDRY NOTICES AND REPORTS ON WELLS

Do not use this form for proposals to drill or to deepen or reentry to a different reservoir.
Use "APPLICATION FOR PERMIT—" for such proposals

5. Lease Designation and Serial No.

NM-14218

6. If Indian, Allottee or Tribe Name

7. If Unit or CA, Agreement Designation

SUBMIT IN TRIPLICATE

1. Type of Well

☒ Oil Well ☐ Gas Well ☐ Other

2. Name of Operator

Texaco Exploration & Production Inc.

3. Address and Telephone No.

P.O. Box 730, Hobbs, NM 88241-0730 (505) 393-7191

4. Location of Well (Footage, Sec., T., R., M., or Survey Description)

Unit Letter O, 1979 FEL, 990 FSL

Sec. 26, T-24-S, R-37-E

8. Well Name and No.

C.C. Fristoe B Fed NCT-2 #13

9. API Well No.

30-025-22057 (#13)

10. Field and Pool, or Exploratory Area

Langlie Mattix + Justis Blby

11. County or Parish, State

Lea County, NM

2. CHECK APPROPRIATE BOX(S) TO INDICATE NATURE OF NOTICE, REPORT, OR OTHER DATA

TYPE OF SUBMISSION

- ☒ Notice of Intent
☐ Subsequent Report
☐ Final Abandonment Notice

TYPE OF ACTION

- ☒ Abandonment
☐ Recompletion
☐ Plugging Back
☐ Casing Repair
☐ Altering Casing
☐ Other
☐ Change of Plans
☐ New Construction
☐ Non-Routine Fracturing
☐ Water Shut-Off
☐ Conversion to Injection

(Note: Report results of multiple completion on Well Completion or Recompletion Report and Log form.)

3. Describe Proposed or Completed Operations (Clearly state all pertinent details, and give pertinent dates, including estimated date of starting any proposed work. If well is directionally drilled, give subsurface locations and measured and true vertical depths for all markers and zones pertinent to this work.)

- 1) Inform BLM 24 hours prior to commencement of plugging.
- 2) MIRU. Install BOP on Glorieta (west) string. By wireline, GIH with gauge ring. Clean hole to TD. Move BOP and repeat for Blinebry string. If unable to reach TD, confer with engineer or foreman before running slim hole tubing and bit.

Blinebry (Z), EAST String:

- 3) By wireline, set 3 1/2" CIBP at 5145'. By wireline bailer, spot 2 sx (40') class "C" cement on top. Set 2nd CIBP at 4725' and cap with 2 sx.
- 4) Set third CIBP at 3325' (Langlie Mattix). Spot 2 sx cement on top of CIBP. Load string with 10# brine.
- 5) Run 2" OD cement bond tool and determine top of cement. Move BOP to Glorieta (west) string. If tools unavailable, run free point.

Glorieta/Langlie Mattix (Y), WEST String:

- 6) By wireline, set 2 7/8" CIBP at 3325'. By wireline bailer, spot 1 sk (40') class "C" cement on top. POH.
- 7) By wireline, jet cut both strings at TOC indicated by bond log.
- 8) Circulate salt gel mud, 10# brine and 25#/BBL gel, and fill open hole and casing to surface. Pump 65 sx cement from approximately 2100'-1900' on top of casing stubs. Circulate mud and confirm absence of annular flow.
- 9) Tag intermediate plug with WS. Move up hole. Pump 65 sx cement from 1100'-900' covering 9 5/8" casing shoe. TAG PLUG.
- 10) Move up hole. Pump 35 sx cement from 100' to the surface
- 11) Cut off wellhead and install dry hole marker. Clean location.
- 12) Restore surface as per Federal requirements.

4. I hereby certify that the foregoing is true and correct

Signed [Signature]

Title Production Engineer

Date 11-5-91

(This space for Federal or State office use)

Approved by _____
Conditions of approval, if any:

Title _____

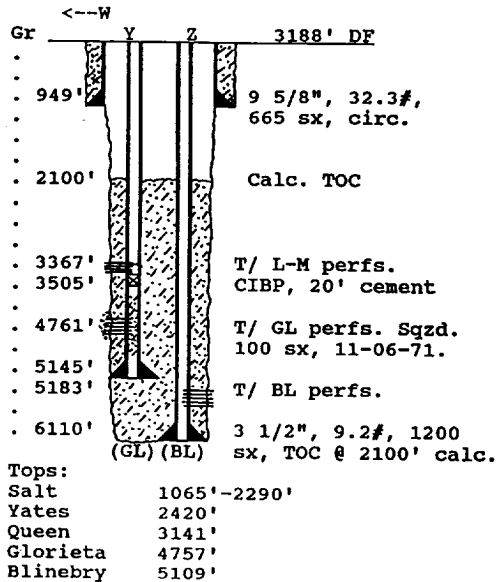
Date 11/19/91

WELL DATA SHEET

PO-113
(5/91)

OPERATOR: Texaco E&P Inc. Lease: C.C. Fristoe B Fed NCT-2 #13
FOOTAGE LOCATION: 990 FSLx1979 FEL Sec./Twn/Rng: Unit O, Sec 26, T-24-S, R-37-E
Dual Blinebry/Langlie Mattix (Glorieta) Lea County, New Mexico

SCHEMATIC



TABULAR DATA

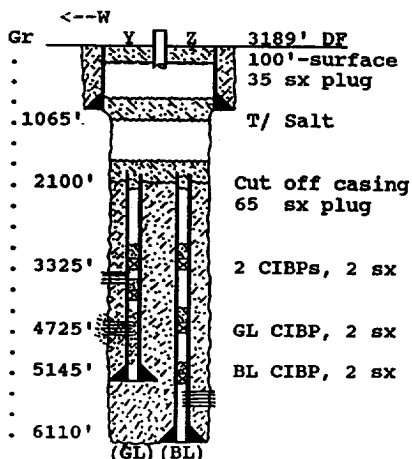
Surface Casing: Set at 949'
Size 9 5/8", 32.3# Cemented with 1200 sx.
TOC surface ' determined by circulation
Hole Size 12 1/4" Comp. Date 5-26-67
Intermediate casing: Set at _____
Size none Cemented with _____ sx.
TOC _____ ' determined by _____
Hole Size Glorieta sqzd 11-06-70, 100 sx.
Production Casing: Cemented with: 1200 sx.
Size 2 7/8", 6.4# Set at 5145'
3 1/2", 9.2# Set at 6110'
TOC 2100 ' determined by calculation
Hole Size 8 3/4", TOC based on 75% fill.
Open Hole Interval: None
Glorieta squeezed to eliminate a leak in the 3 1/2" Blinebry casing. Last GL test was for 90 mcfd at 10 psi tubing pressure.

PLUG AND ABANDON DATA

PO-113
(5/91)

OPERATOR: Texaco E&P Inc. LEASE: C.C. Fristoe B Fed NCT-2 #13
FOOTAGE LOCATION: 990 FSLx1979 FEL Sec./Twn/Rng: Unit O, Sec 26, T-24-S, R-37-E
Shut-in due to 100% water production from unknown source. Lea County, New Mexico

SCHEMATIC



PLUGGING DATA

Surface Plug:
Size 100'-Surf. Cemented with 35 sx.
1100'-900' Cemented with 65 sx.
Class 'C' Cement, 1.32 cu ft/ sx
Intermediate Plug(s):
Size 2 CIBPs Cemented with 2 sx.
_____ Cemented with _____ sx.
Class 'C' Cement, 1.32 cu ft/ sx
Producing Zone Plugs:
Size 3 1/2" CIBP Cemented with 2 sx.

Casing stub plug covers base of salt section.
Surface shoe plug covers top of salt section.

NOTE: WEST String, Y, is Glorieta/L-M
EAST String, Z, is Blinebry.